

WEIGHT (LBS)	INDUCTANCE	LOSS (WATTS)
190	0.029 mH	630

ECO No	DESCRIPTION	REV BY	DATE
M9234	UPDATED COIL MODEL	KV	07/28/14

D

C

B

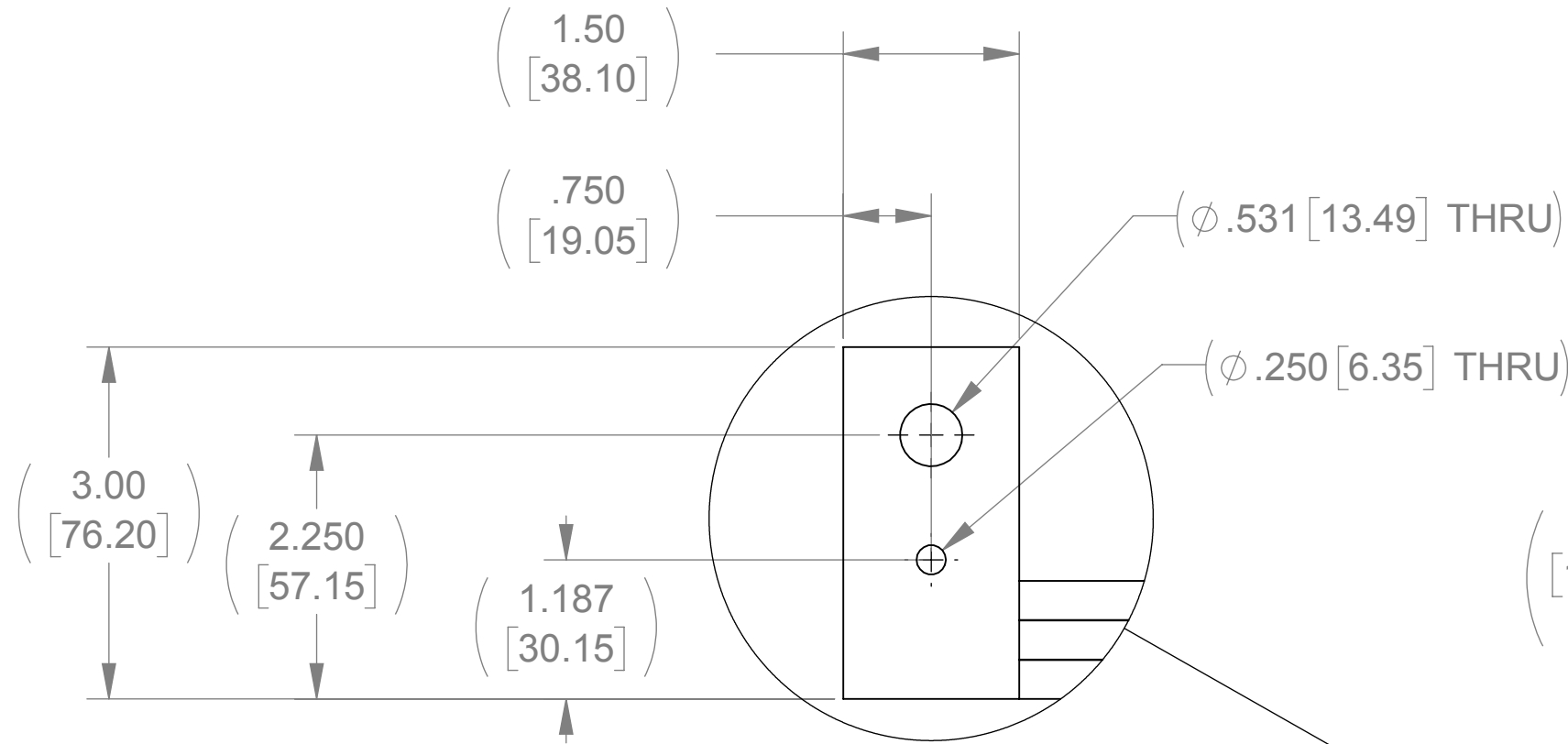
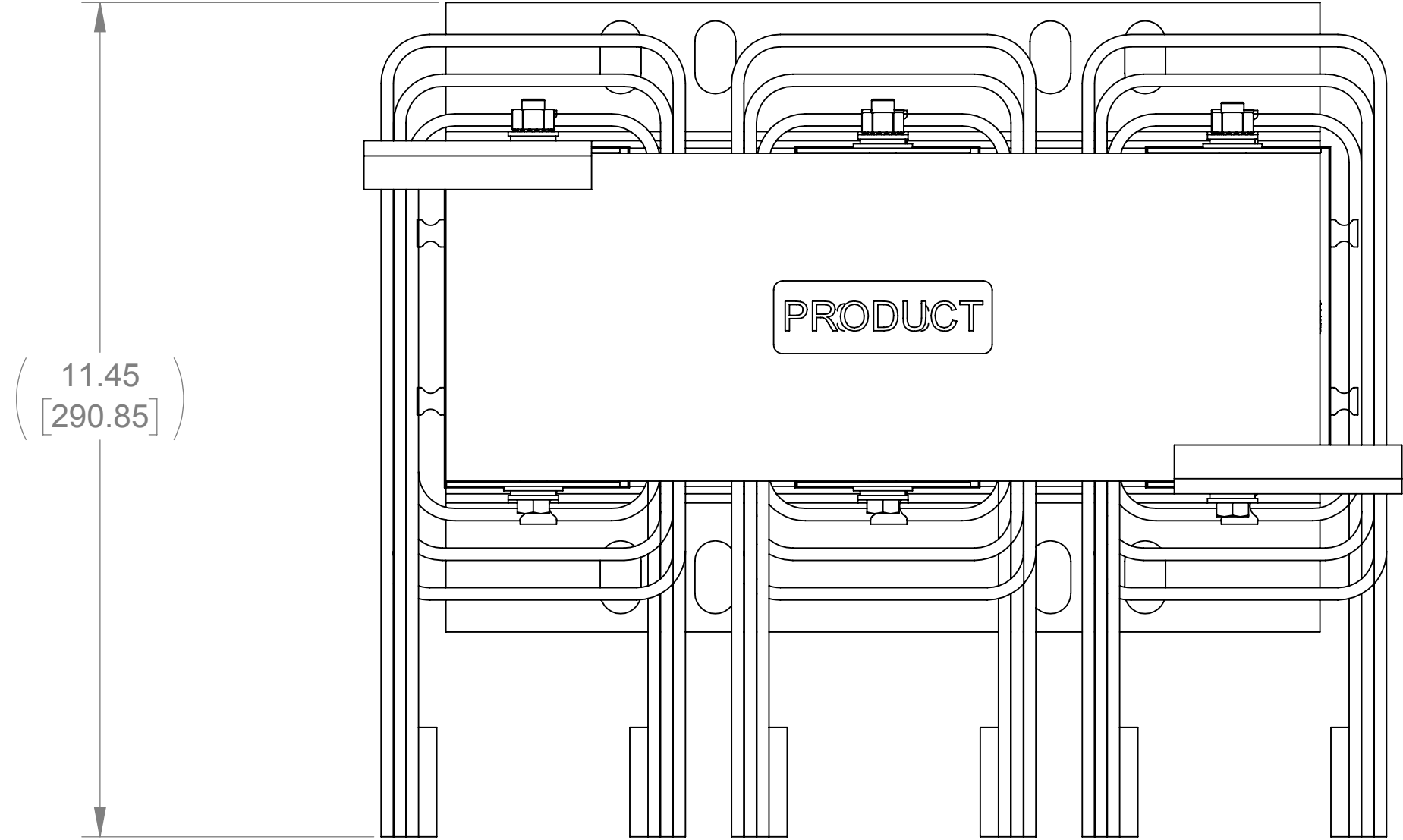
A

D

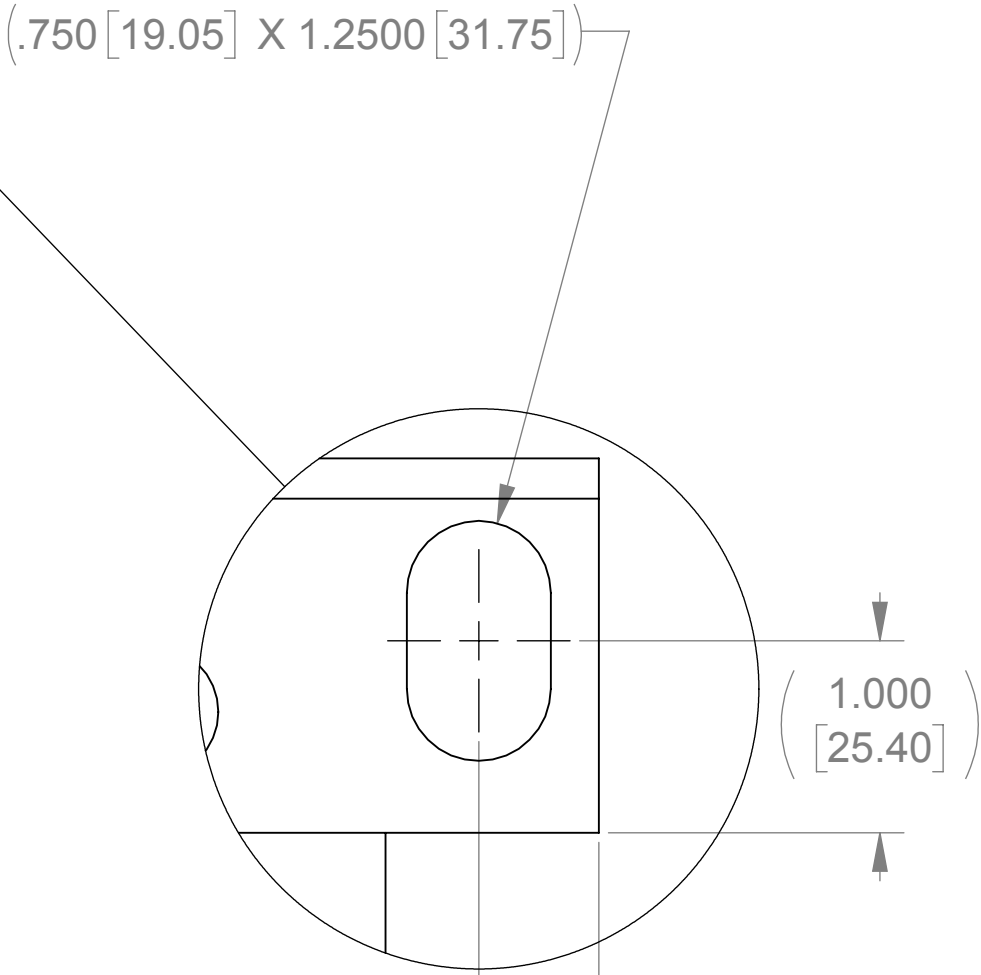
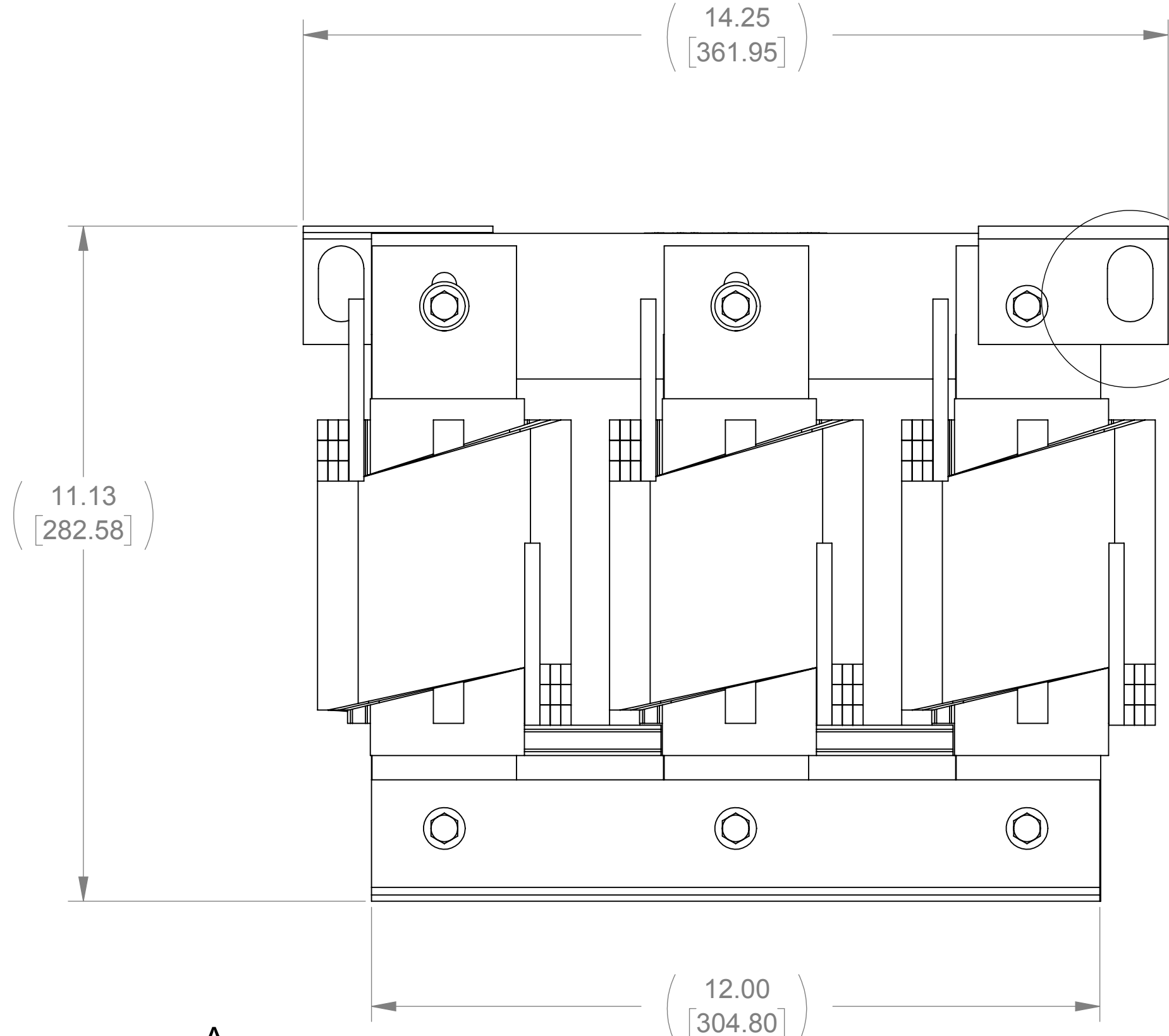
C

B

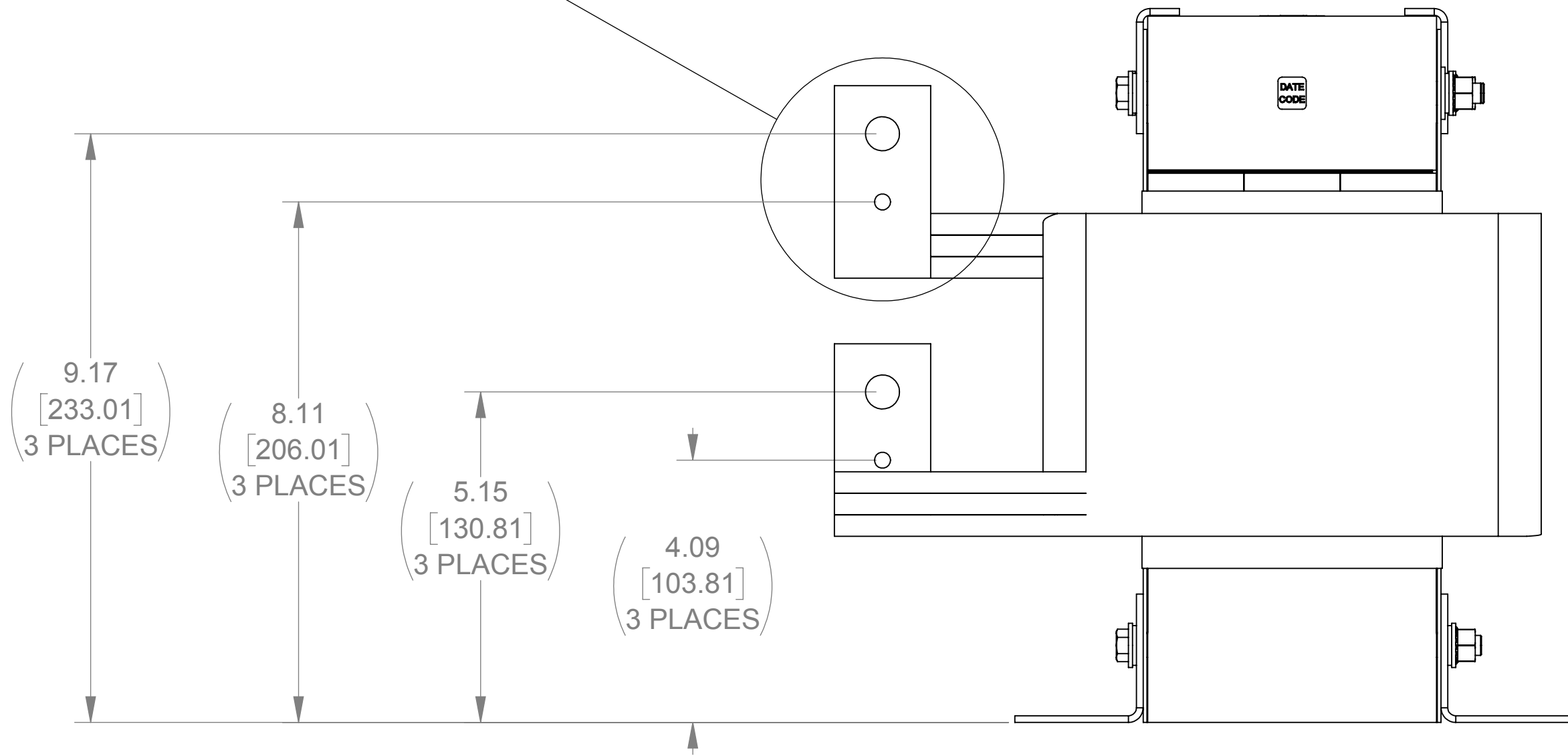
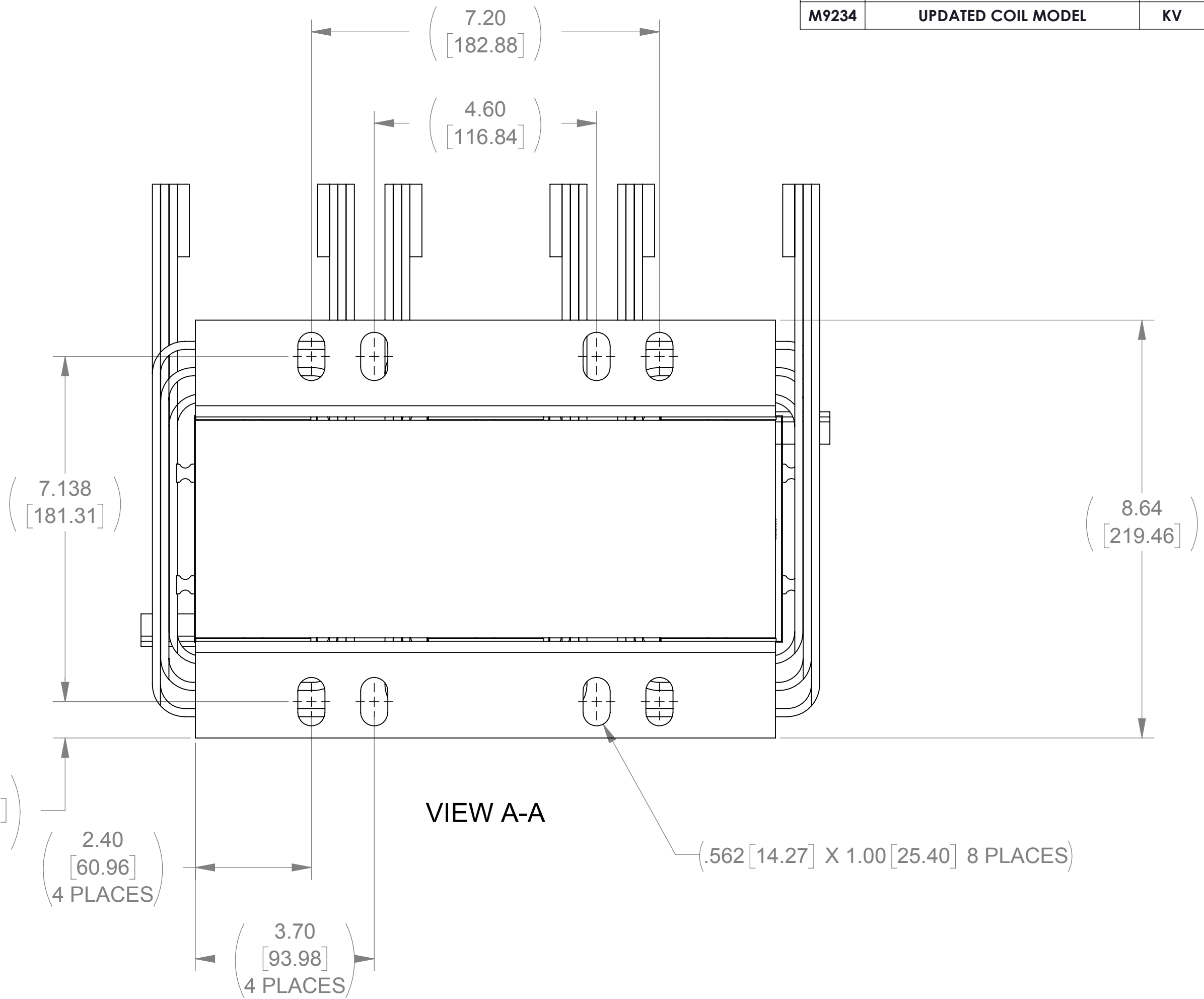
A



DETAIL B  
6 PLACES



DETAIL C  
2 PLACES



THE COMPONENT, PART OR ASSEMBLY DESCRIBED IN THIS DOCUMENT MUST COMPLY WITH THE EU(EUROPEAN UNION) DIRECTIVE RoHS		MATERIAL		CONFIDENTIAL AND PROPRIETARY INFORMATION THIS DOCUMENT CONTAINS CONFIDENTIAL AND PROPRIETARY INFORMATION OF MTE CORPORATION AND MAY NOT BE USED, COPIED OR DISCLOSED TO OTHERS EXCEPT WITH THE AUTHORIZED WRITTEN PERMISSION OF MTE CORPORATION	
CONTAINS <0.1% OF ANY SVHC BY WEIGHT PER REACH REGULATION				DESCRIPTION	
UNLESS OTHERWISE SPECIFIED DIMENSIONS ARE IN INCHES [MM] TOLERANCES ARE: ANGLES: ± 1 ° 1 PLACE .X: ± .1 [2.5] 2 PLACE .XX: ± .03 [0.76] 3 PLACE .XXX: ± .010 [0.254]		<b>MTE</b> AN RL POWER ELECTRONICS COMPANY N83 W13330 Leon Road Menomonee Falls, WI 53051 USA 800.455.4683 262.253.8200		LINE/LOAD REACTOR	
		DRAWN MDG	DATE 9/28/05		
		CHECKED RH	DATE 07/28/14		
		APPROVED RH	DATE 07/28/14		
		SIZE D	DWG No. CD RL-75002	REV 07	
		SCALE 1:2		SHEET 1 OF 1	