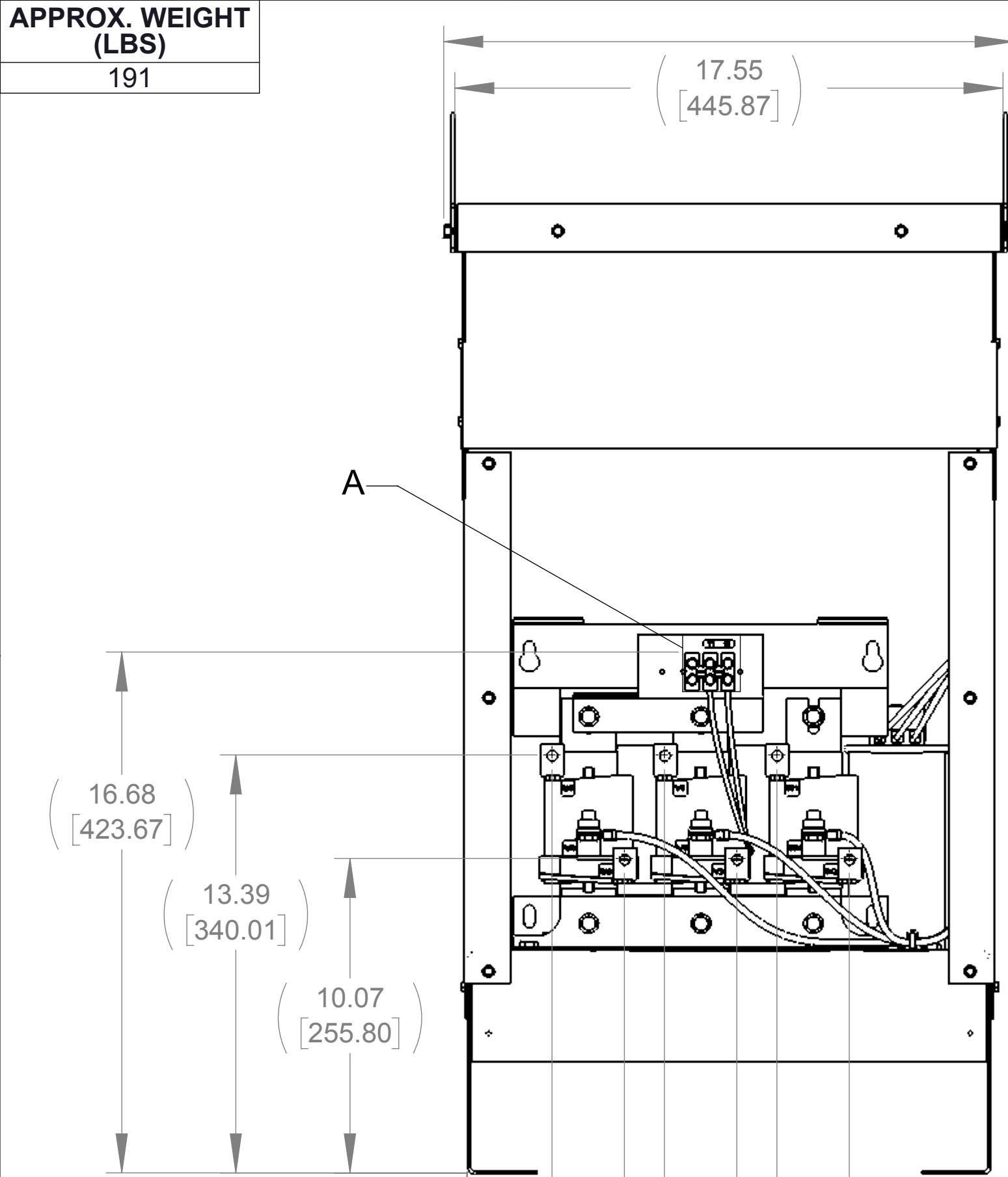
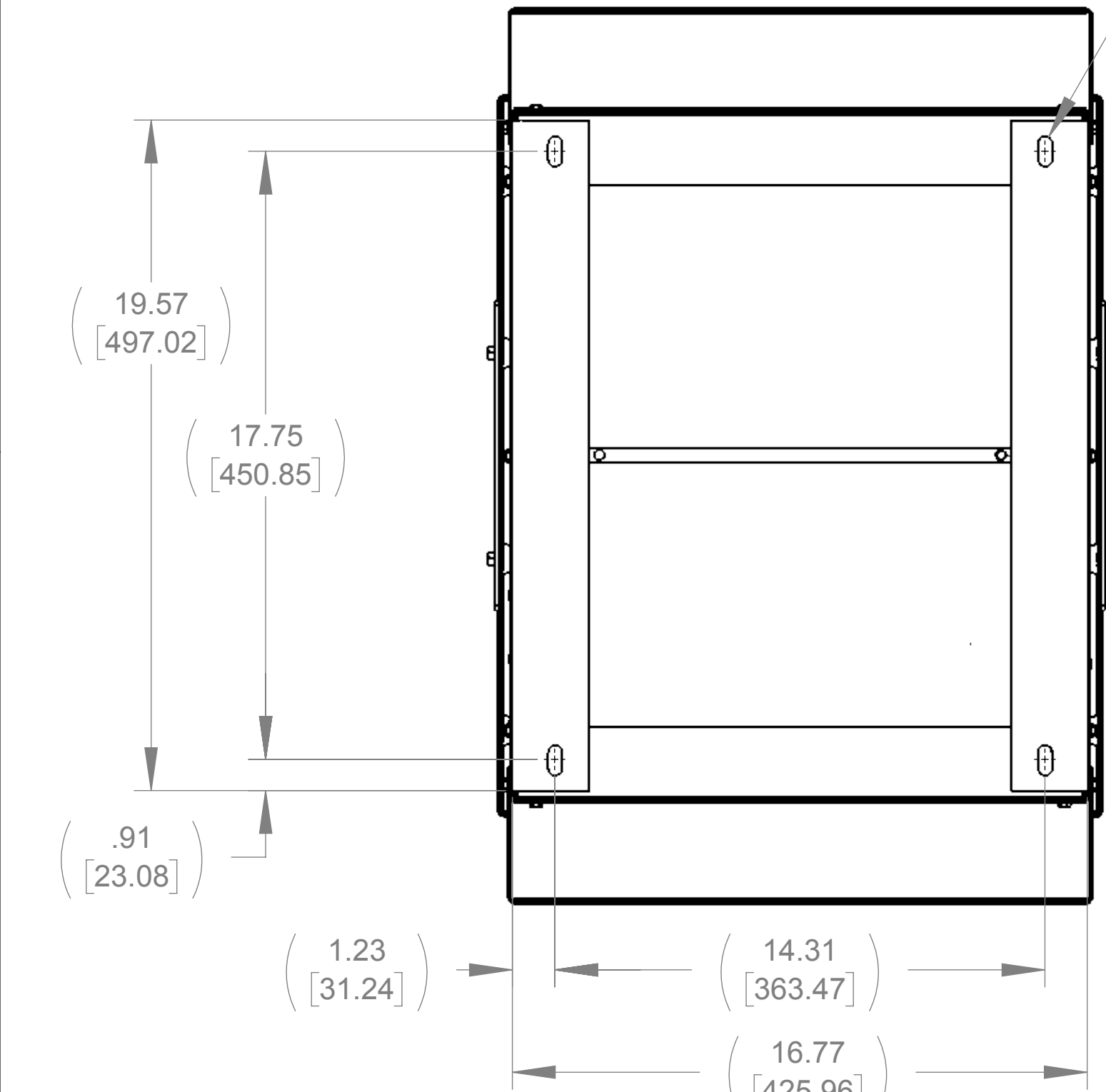


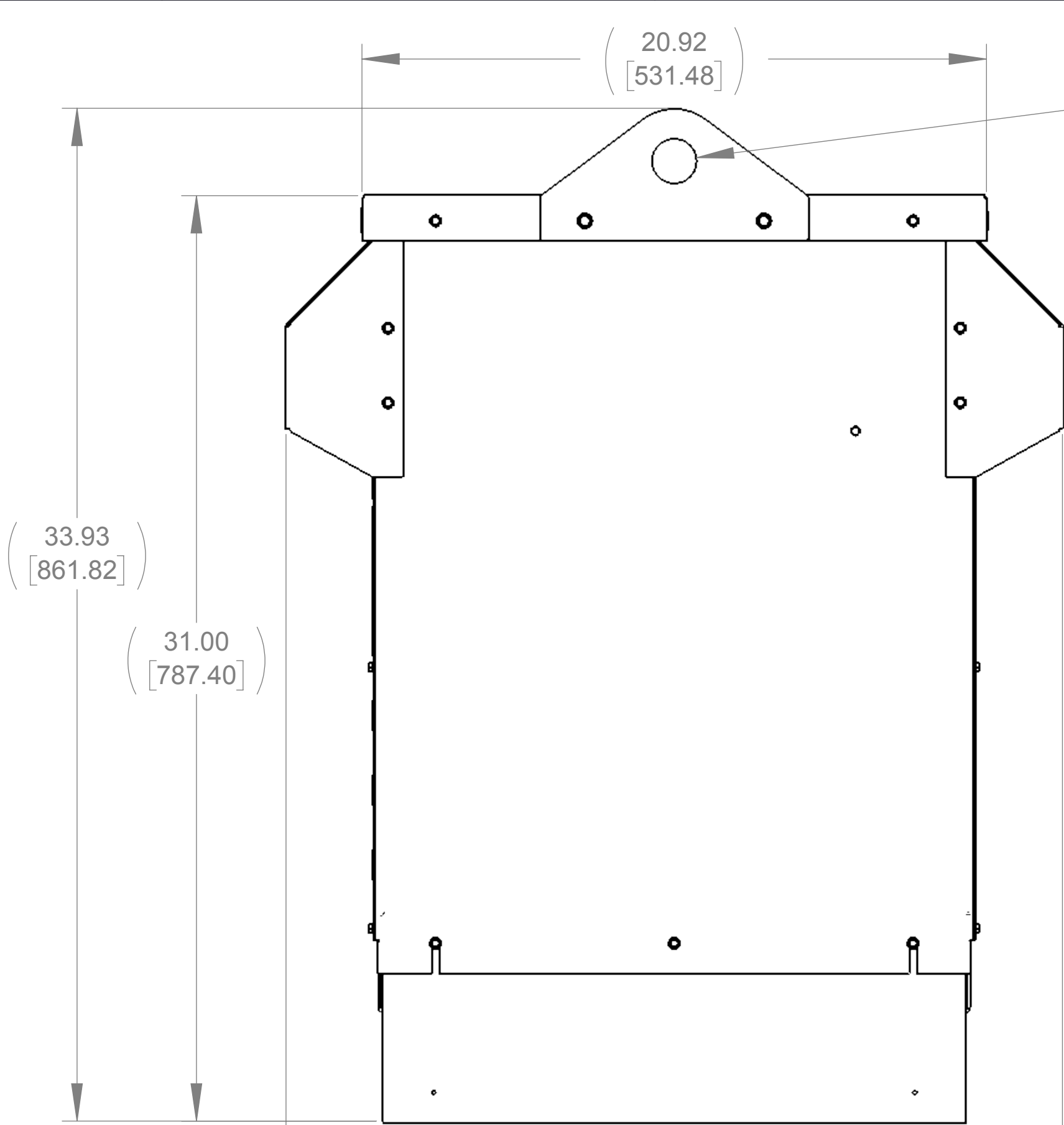
APPROX. WEIGHT  
(LBS)  
191



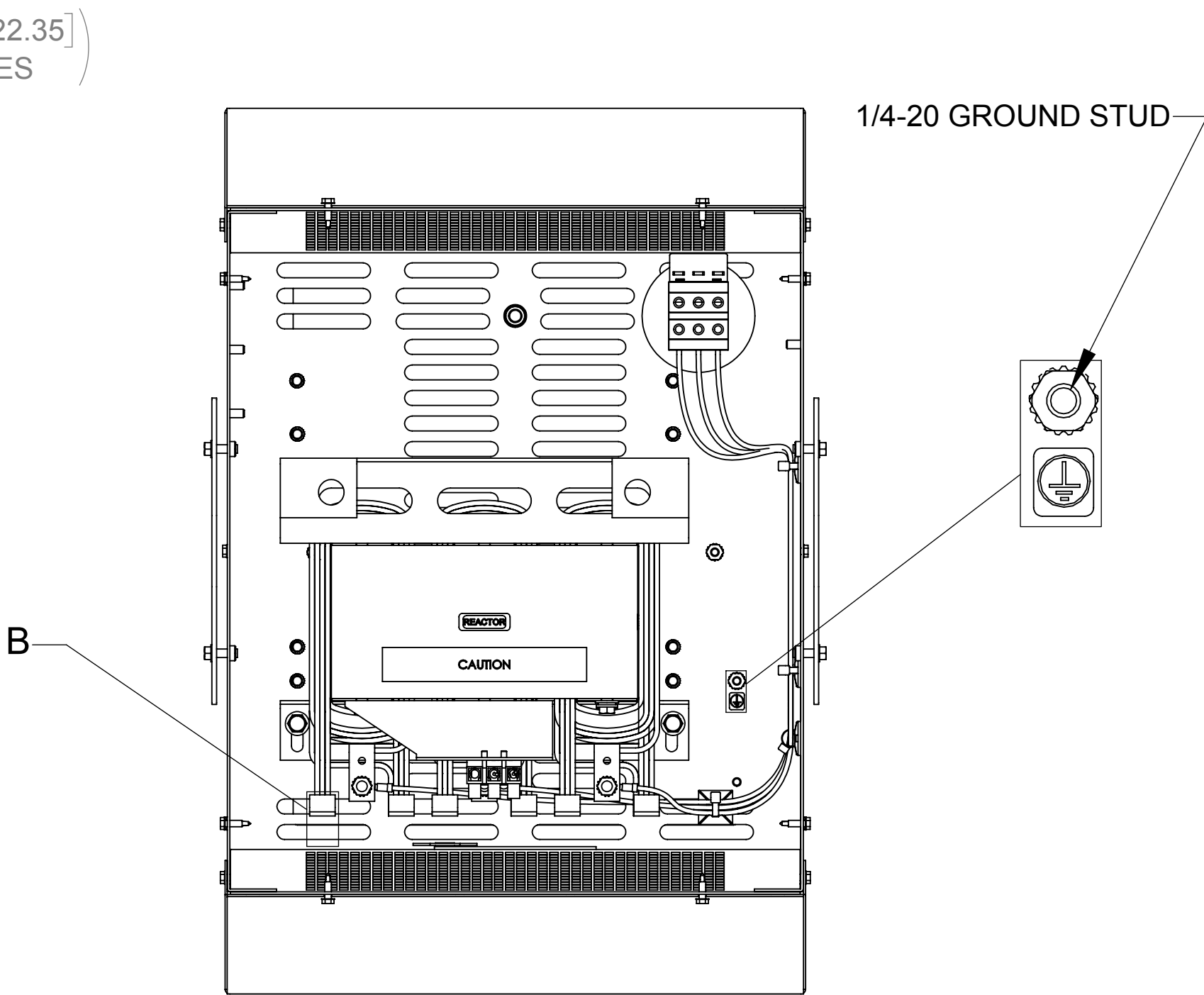
FRONT VIEW  
(PANELS REMOVED)



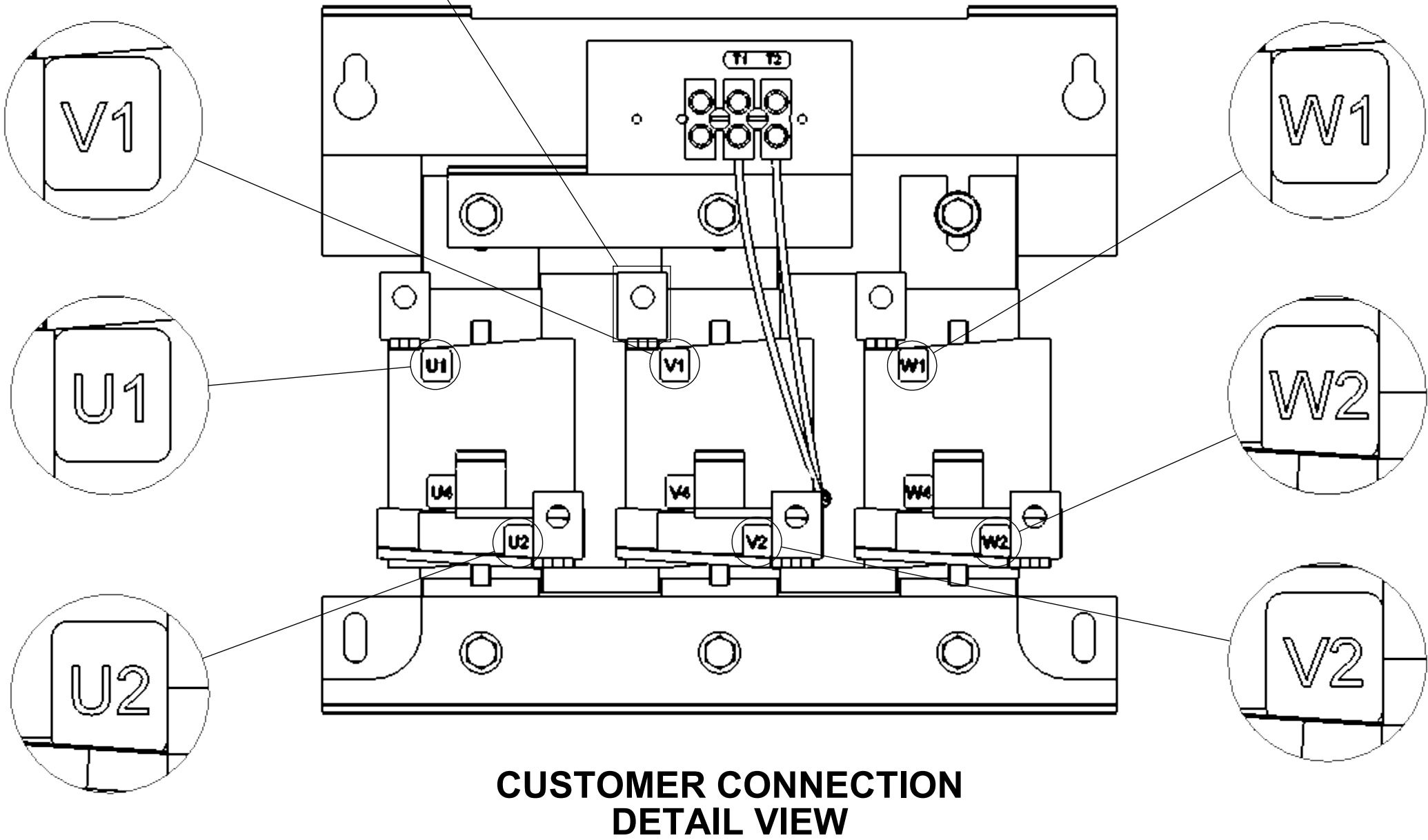
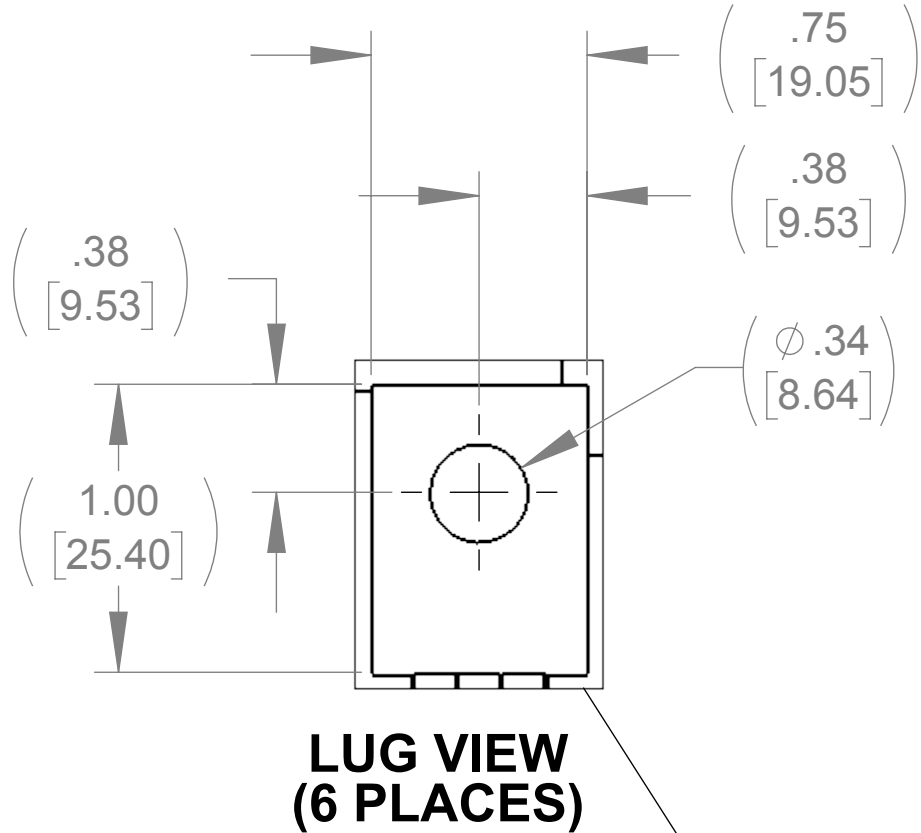
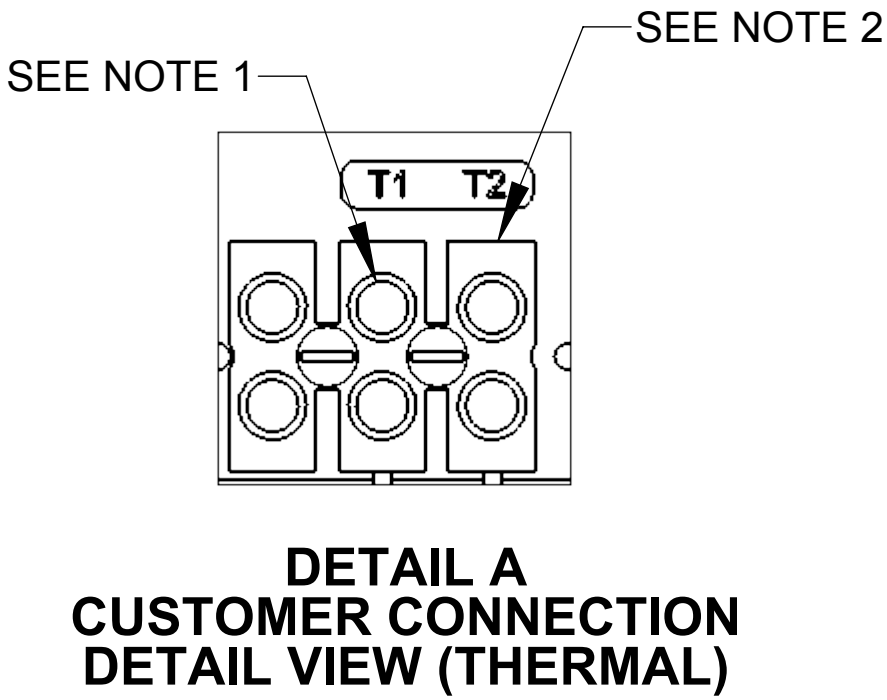
BOTTOM VIEW




SIDE VIEW



TOP VIEW  
(PANELS REMOVED)



- NOTES:**
- TIGHTEN TERMINAL BLOCK SCREWS TO 16 IN/LBS. TORQUE.
  - TERMINAL WIRE SIZE: 4-14 AWG.

THE COMPONENT, PART OR ASSEMBLY DESCRIBED IN THIS DOCUMENT MUST COMPLY WITH THE EU(EUROPEAN UNION) DIRECTIVE RoHS2		MATERIAL		CONFIDENTIAL AND PROPRIETARY INFORMATION THIS DOCUMENT CONTAINS CONFIDENTIAL AND PROPRIETARY INFORMATION OF MTE CORPORATION AND MAY NOT BE USED, COPIED OR DISCLOSED TO OTHERS EXCEPT WITH THE AUTHORIZED WRITTEN PERMISSION OF MTE CORPORATION			
CONTAINS <0.1% OF ANY SVHC BY WEIGHT PER REACH REGULATION				DESCRIPTION			
<div>UNLESS OTHERWISE SPECIFIED DIMENSIONS ARE IN INCHES [MM] TOLERANCES ARE:</div> <div>ANGLES: ± 1 °</div> <div>1 PLACE .X: ± .1 [2.5]</div> <div>2 PLACE .XX: ± .03 [0.76]</div> <div>3 PLACE .XXX: ± .010 [0.254]</div>		<div></div> <div>N83 W13330 Leon Road Menomonee Falls, WI 53051 USA 800.455.4683 262.253.8200</div>		SWG 110A 600V 2-8kHz FILTER, NEMA 3R ENCL.			
		DRAWN	DATE	SIZE	DWG No.	REV	
		MN	08/08/18				
		CHECKED	DATE				
		MN	08/23/18	D	CD SWGW0110E	00	
		APPROVED	DATE				
		TL	10/09/18	SCALE	1:4	SHEET 1 OF 1	