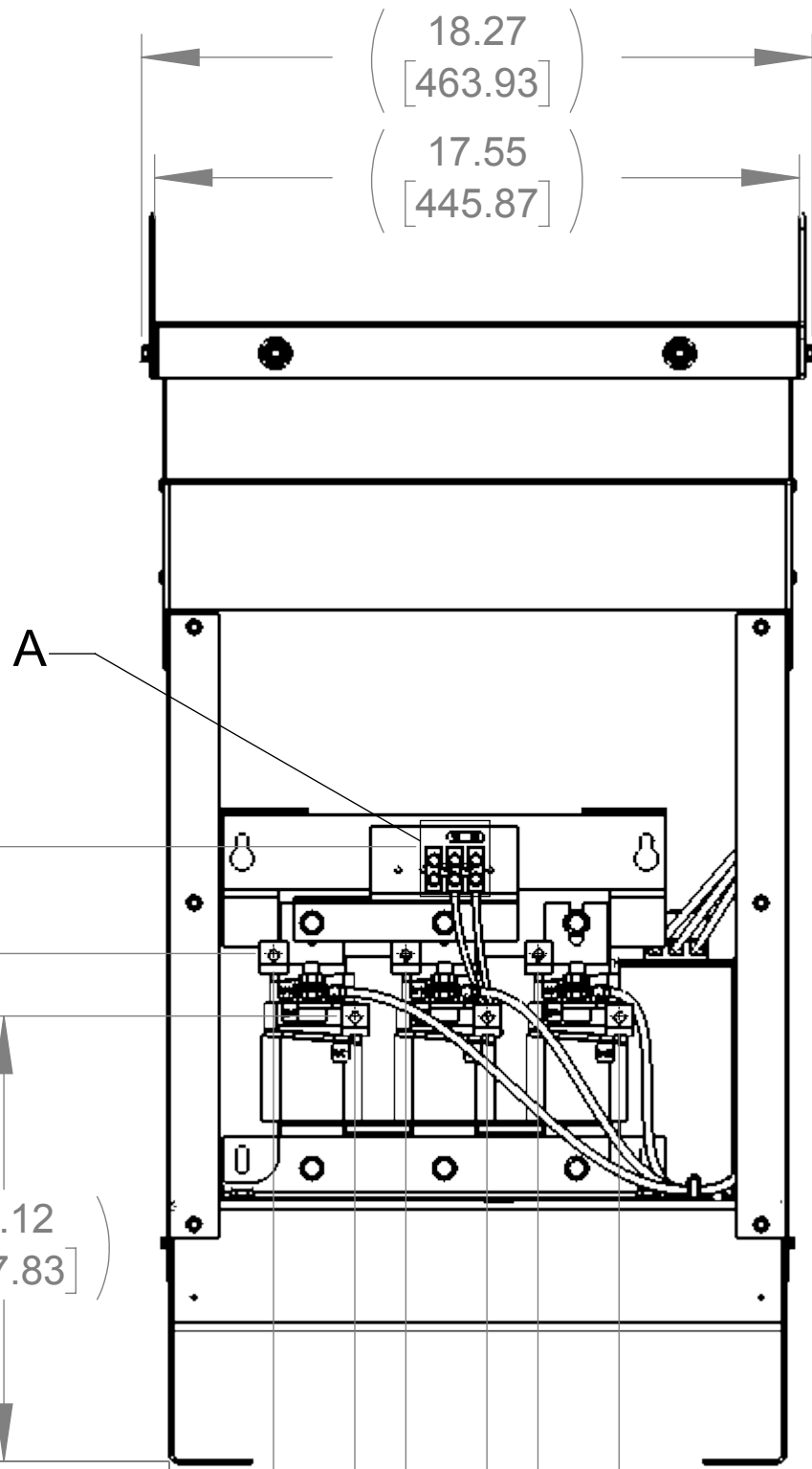


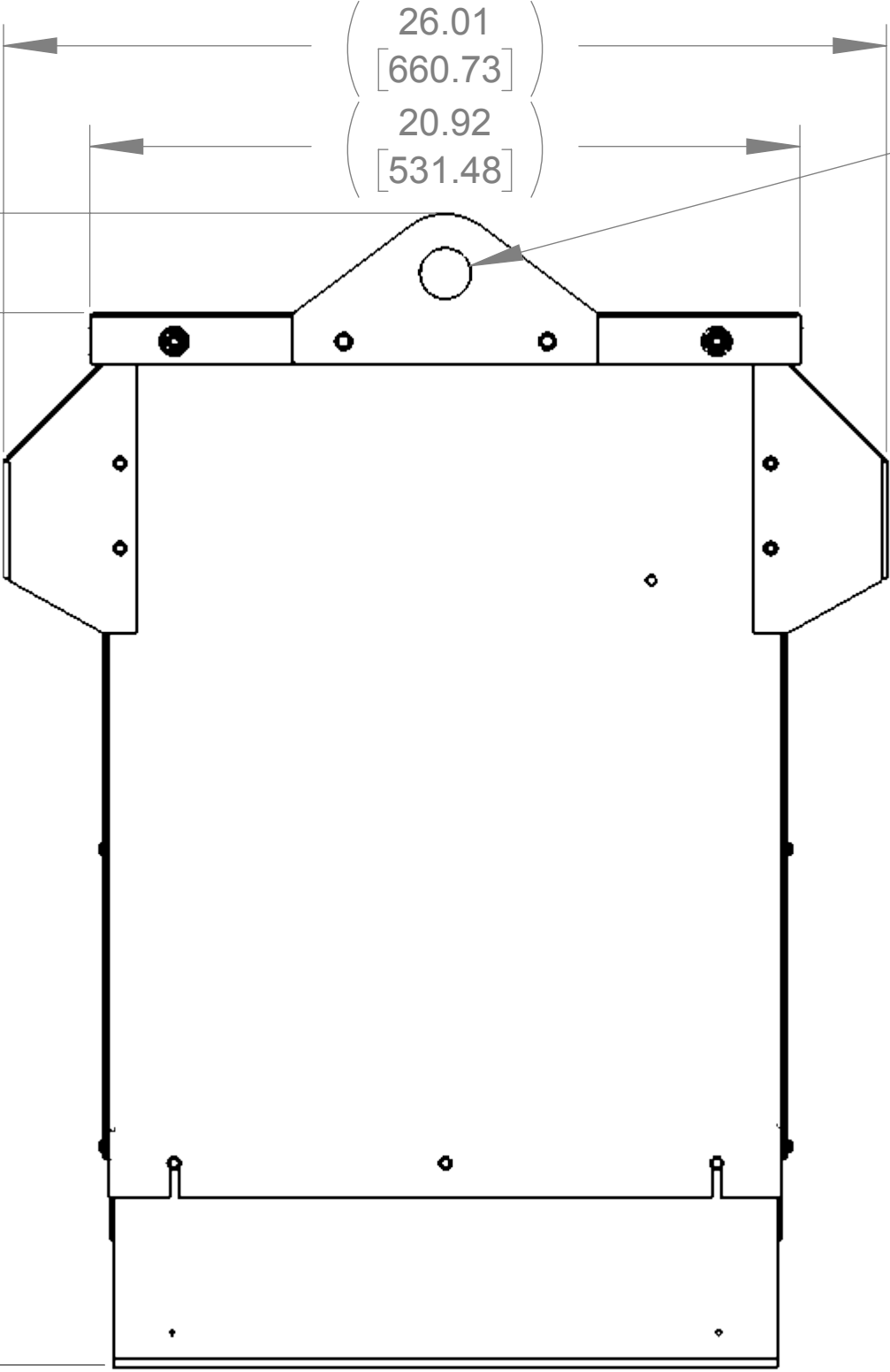
APPROX. WEIGHT  
(LBS)  
177



FRONT VIEW  
(PANELS REMOVED)

33.93  
[861.82]

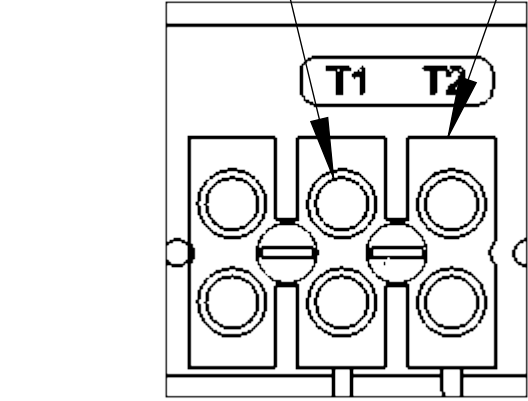
31.00  
[787.40]



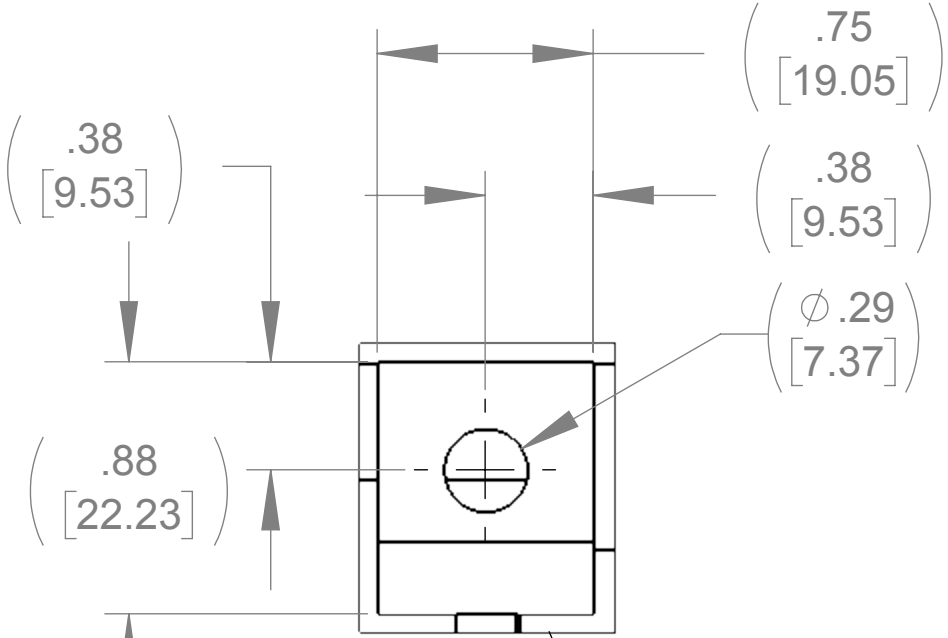
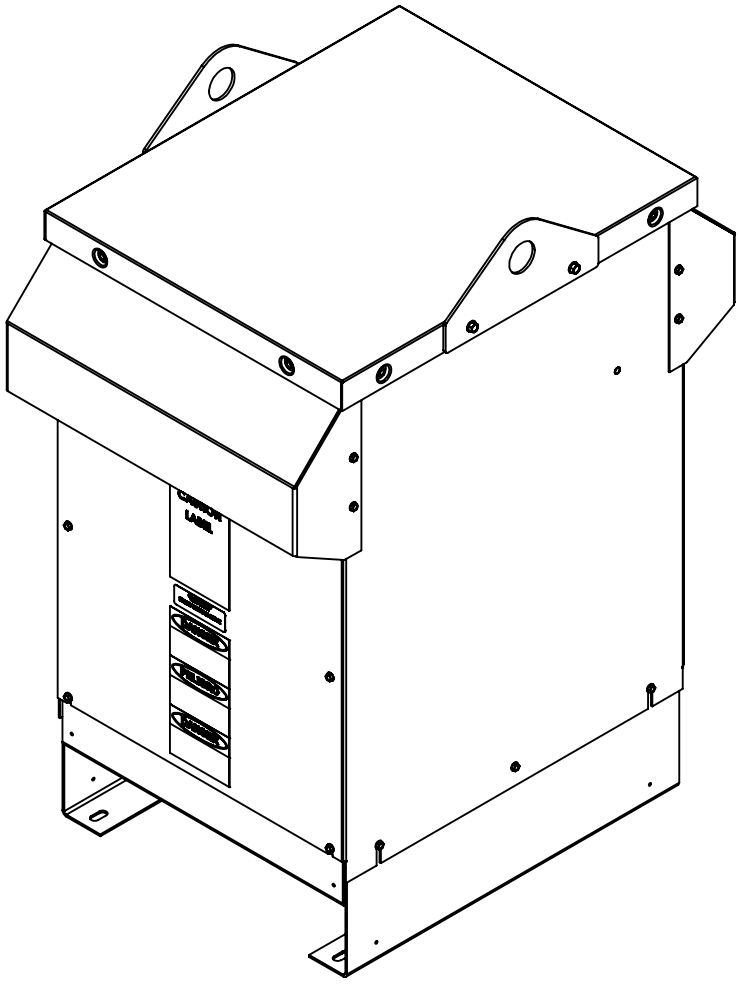
SIDE VIEW

SEE NOTE 1

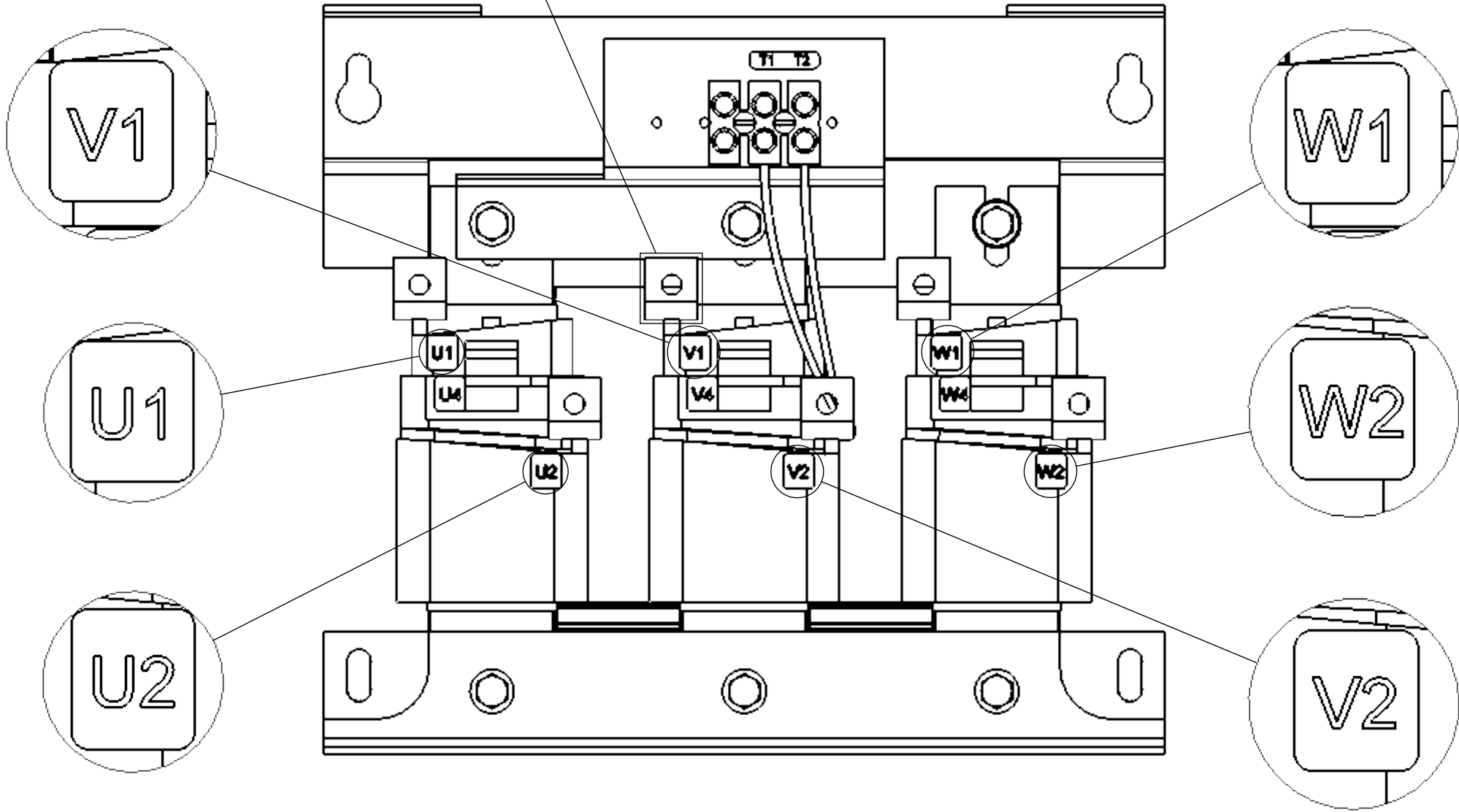
SEE NOTE 2



DETAIL A  
CUSTOMER CONNECTION  
DETAIL VIEW (THERMAL)




LUG VIEW  
(6 PLACES)



CUSTOMER CONNECTION  
DETAIL VIEW

NOTES:

1. TIGHTEN TERMINAL BLOCK SCREWS TO 16 IN/LBS. TORQUE.
2. TERMINAL WIRE SIZE: 4-14 AWG.

THE COMPONENT, PART OR ASSEMBLY DESCRIBED IN THIS DOCUMENT MUST COMPLY WITH THE EU(EUROPEAN UNION) DIRECTIVE RoHS2		MATERIAL		CONFIDENTIAL AND PROPRIETARY INFORMATION THIS DOCUMENT CONTAINS CONFIDENTIAL AND PROPRIETARY INFORMATION OF MTE CORPORATION AND MAY NOT BE USED, COPIED OR DISCLOSED TO OTHERS EXCEPT WITH THE AUTHORIZED WRITTEN PERMISSION OF MTE CORPORATION		
CONTAINS <0.1% OF ANY SVHC BY WEIGHT PER REACH REGULATION				DESCRIPTION		
UNLESS OTHERWISE SPECIFIED DIMENSIONS ARE IN INCHES [MM] TOLERANCES ARE:  ANGLES: $\pm 1^{\circ}$  1 PLACE .X: $\pm .1$ [2.5]  2 PLACE .XX: $\pm .03$ [0.76]  3 PLACE .XXX: $\pm .010$ [0.254]		  N83 W13330 Leon Road Menomonee Falls, WI 53051 USA 800.455.4683 262.253.8200		SWG 80A 600V 2-8kHz FILTER, NEMA 3R ENCL.		
		DRAWN MN	DATE 08/08/18			
		CHECKED MN	DATE 08/09/18			
		APPROVED TL	DATE 10/09/18	SIZE D	DWG No. CD SWGW0080E	REV 00
				SCALE 1:4	SHEET 1 OF 1	

BOTTOM VIEW

TOP VIEW  
(PANELS REMOVED)

1/4-20 GROUND STUD

B