

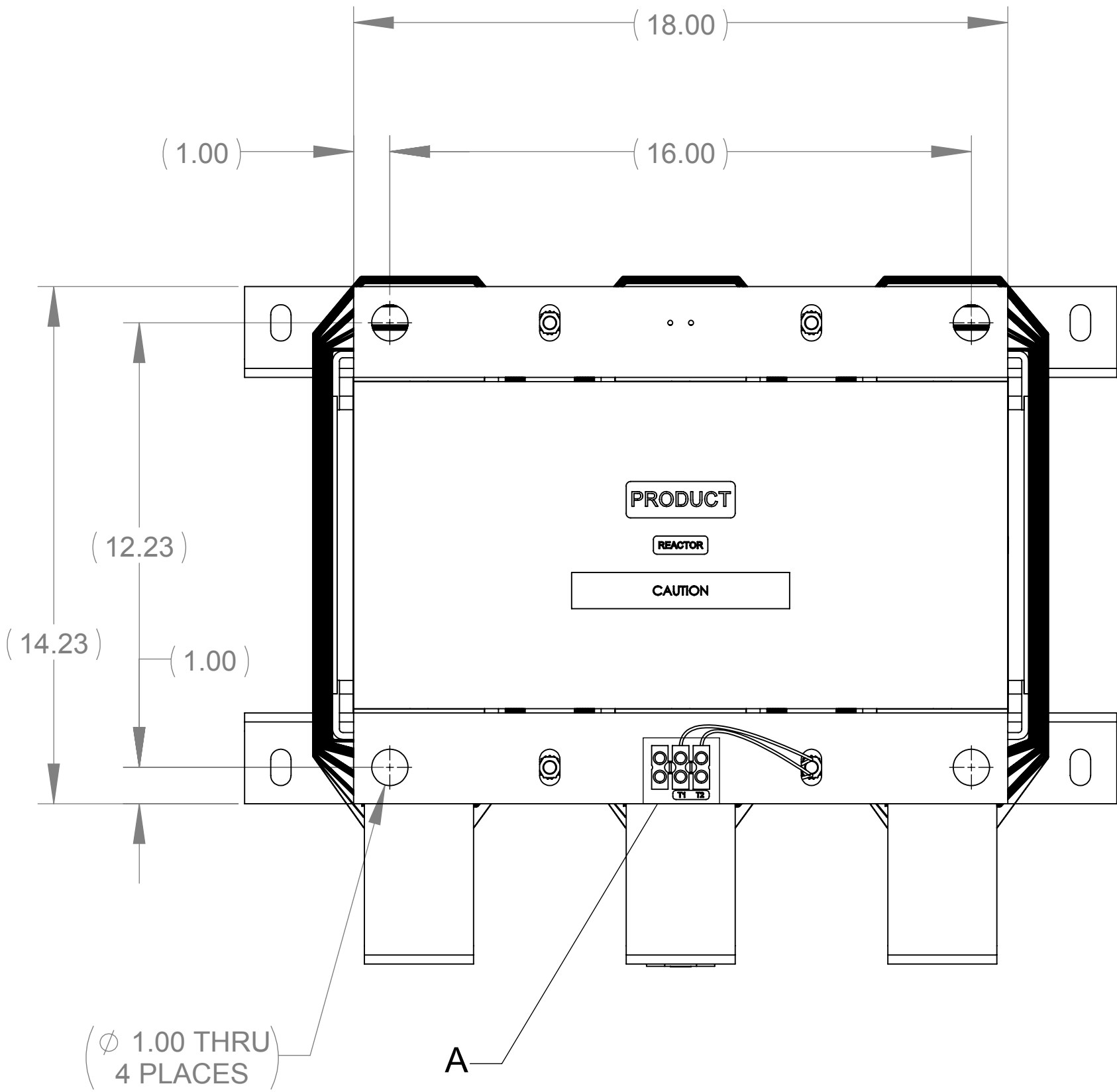
APPROX WEIGHT
(LBS)
854

D

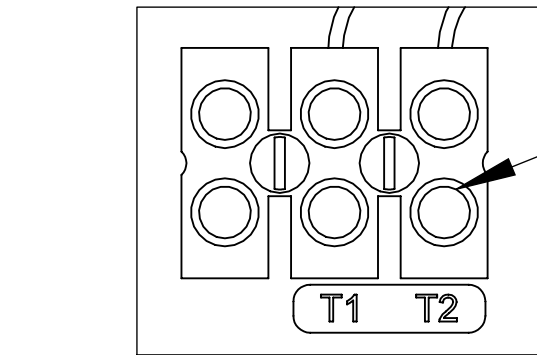
C

B

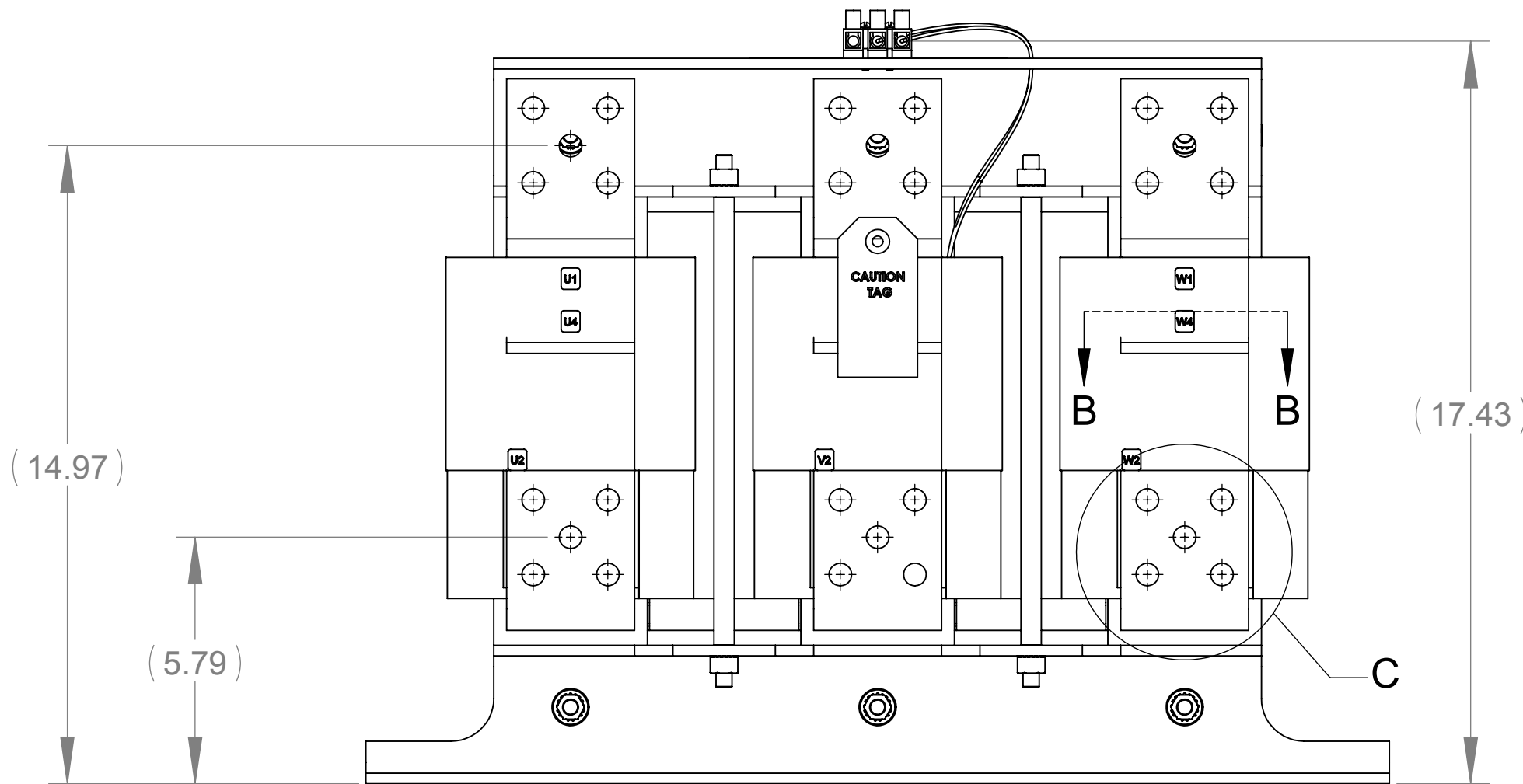
A



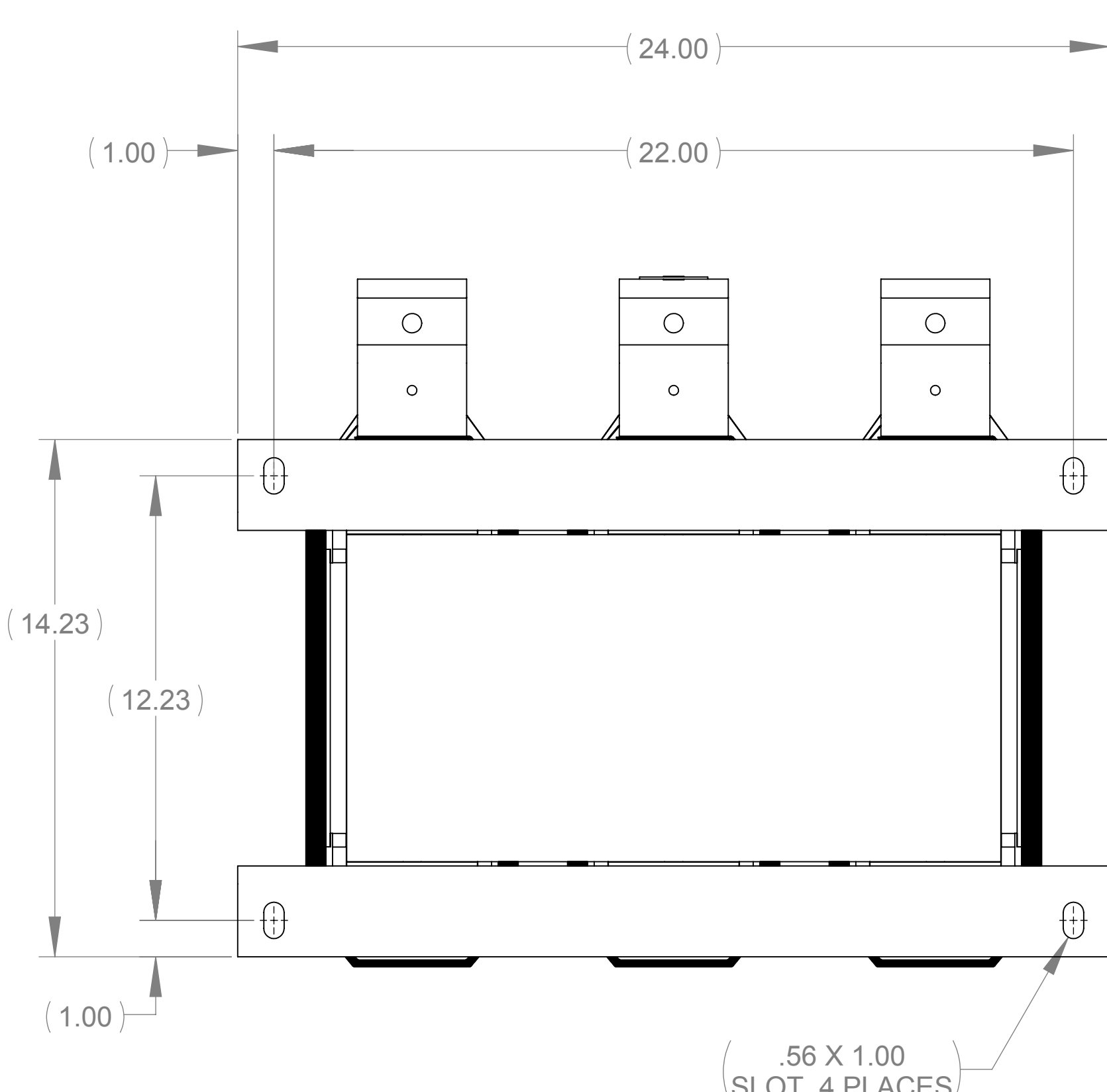
TOP VIEW



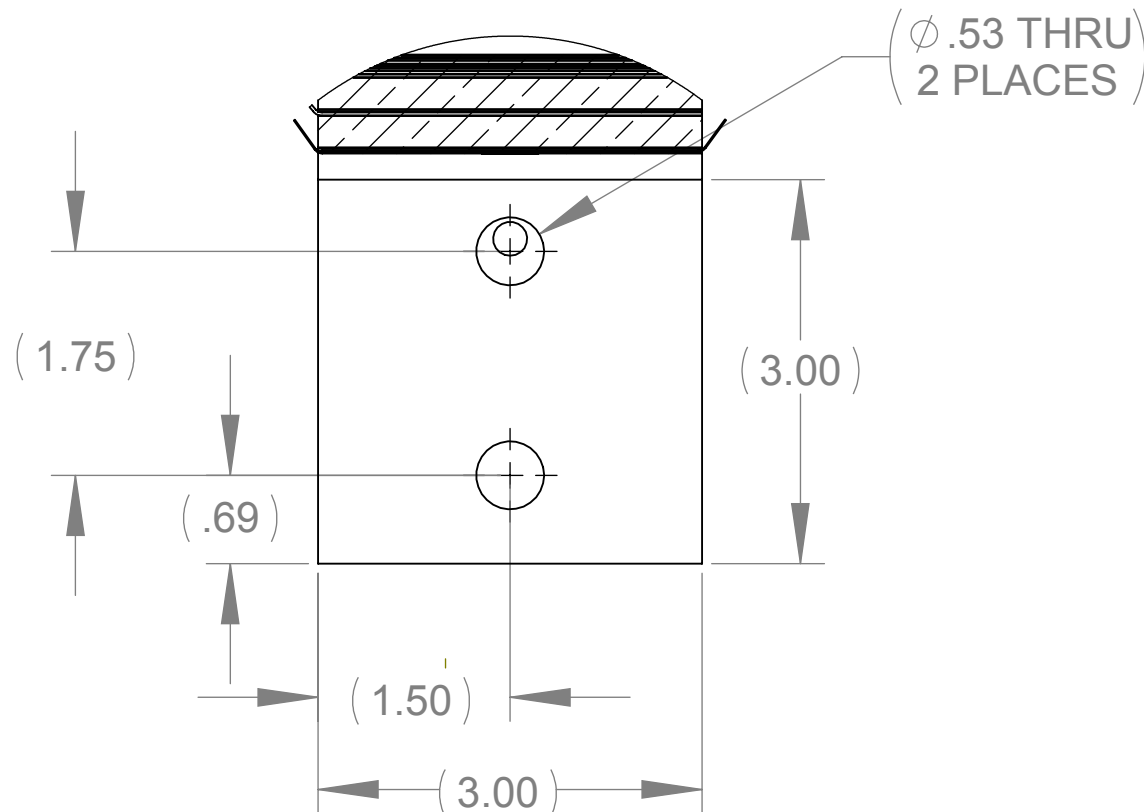
DETAIL A
CUSTOMER CONNECTION
DETAIL VIEW (THERMAL)



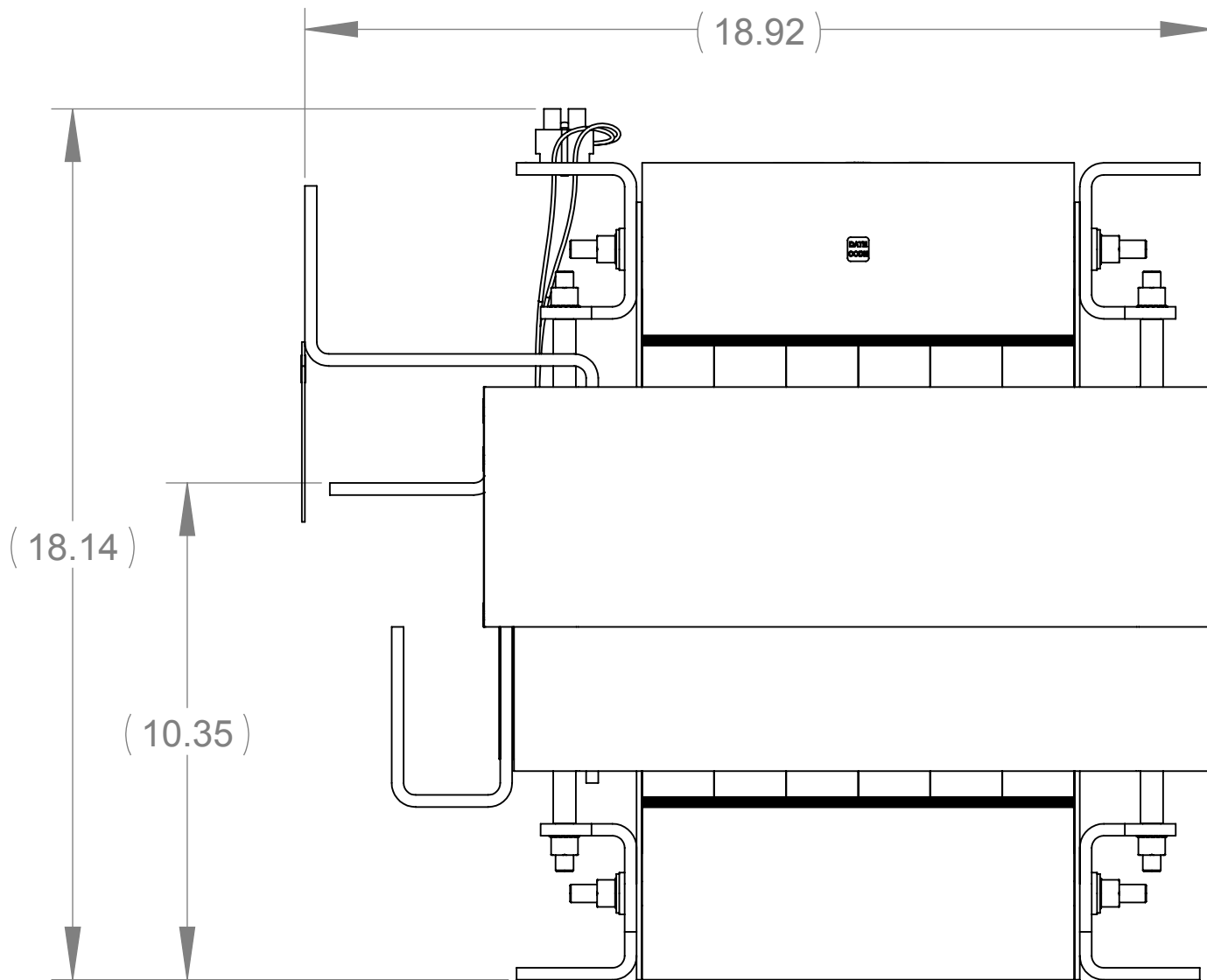
FRONT VIEW



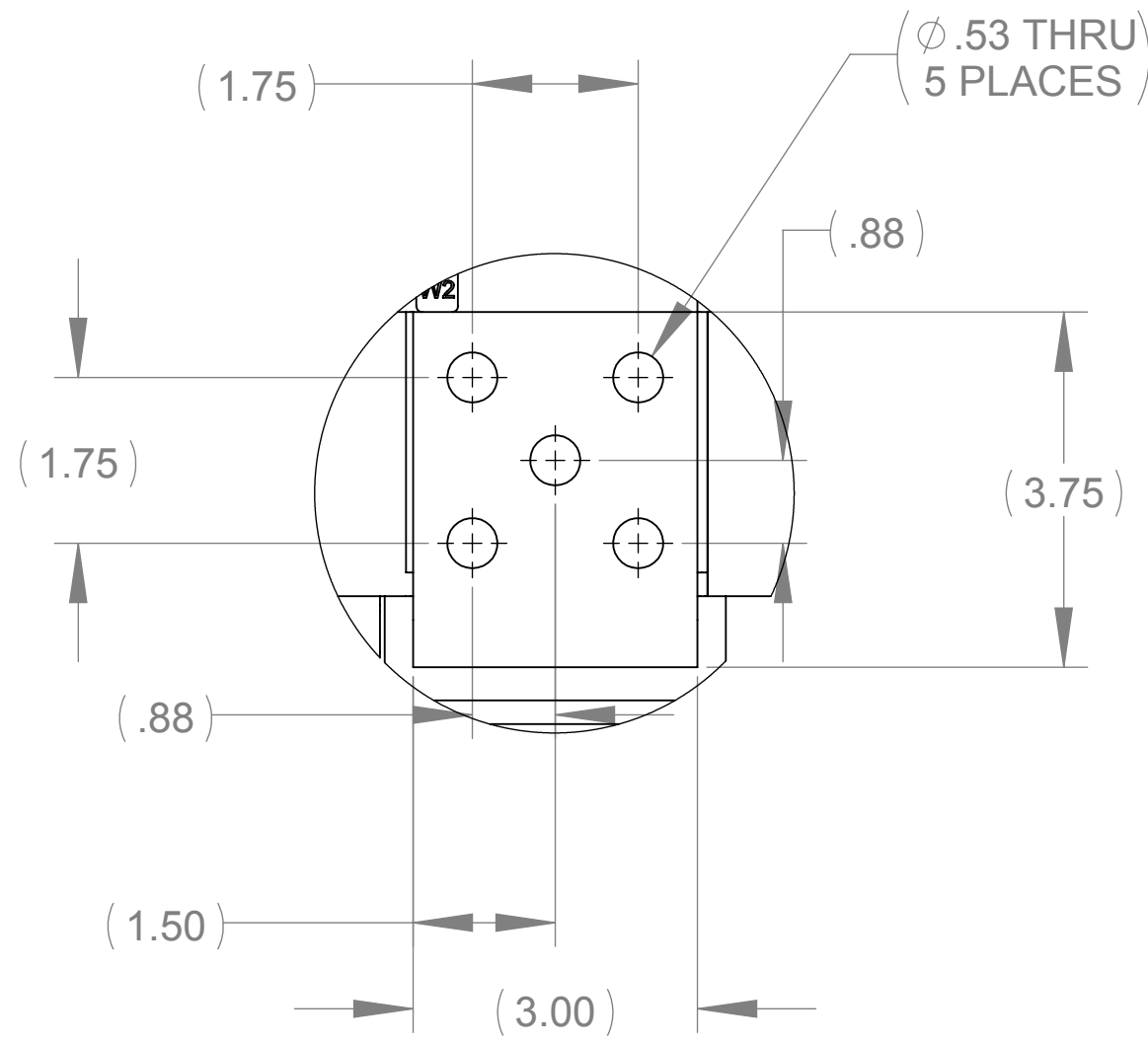
BOTTOM VIEW



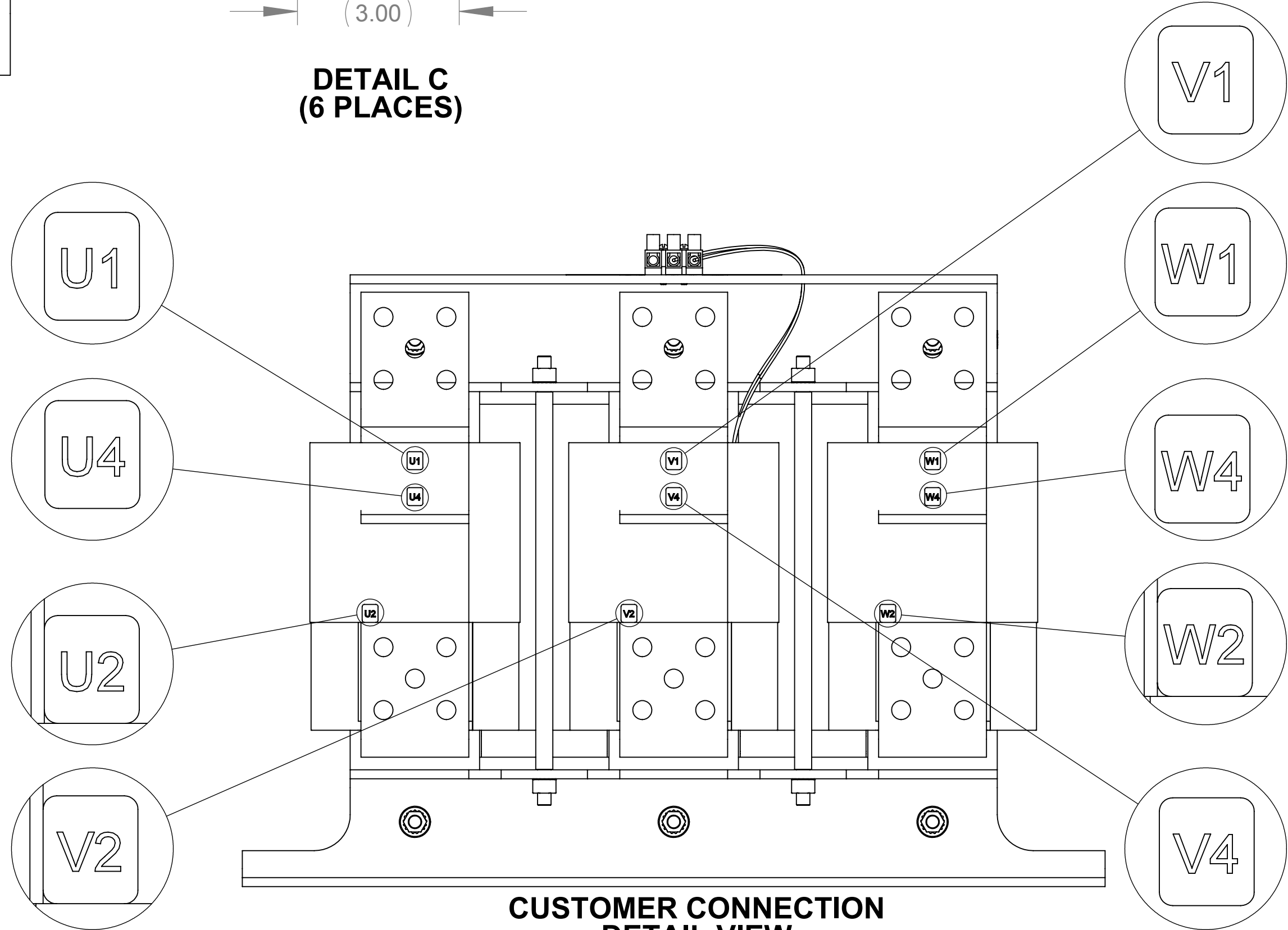
SECTION B-B
(3 PLACES)



SIDE VIEW



DETAIL C
(6 PLACES)



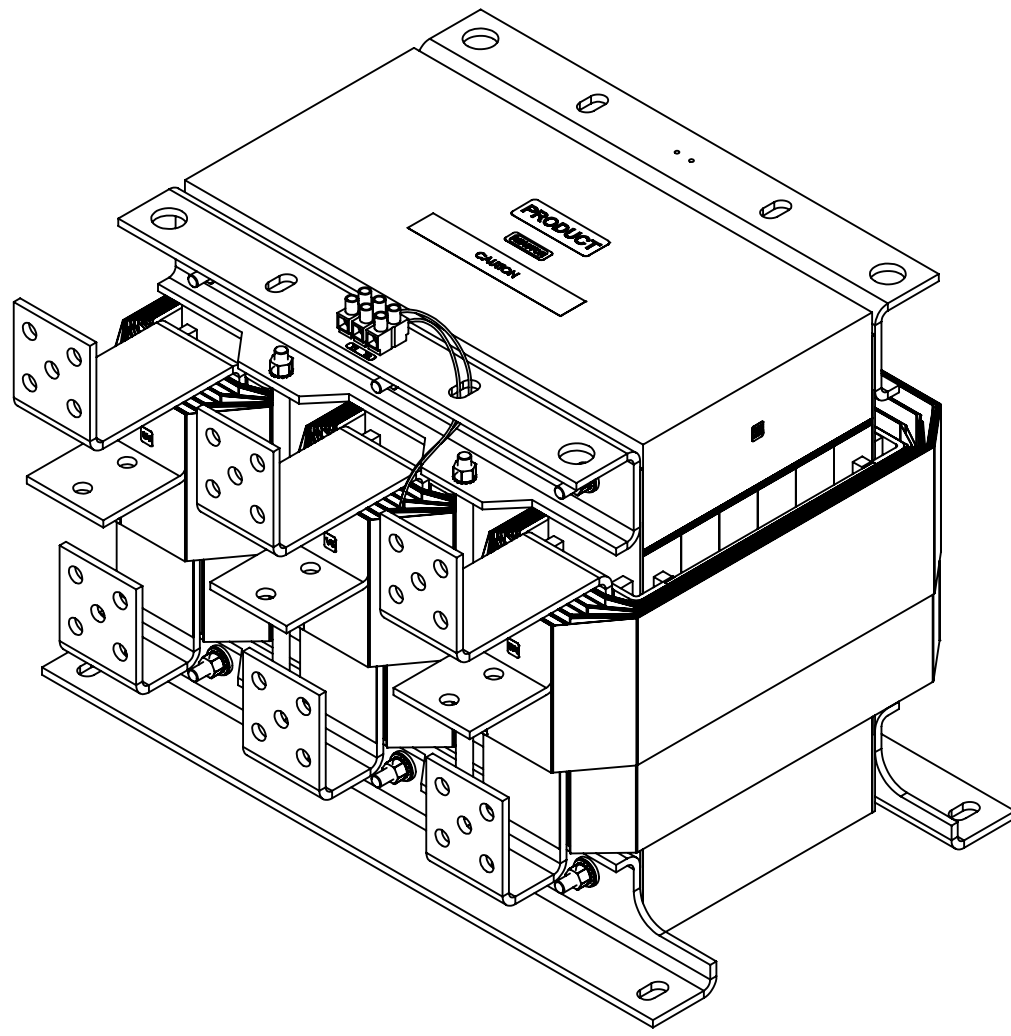
CUSTOMER CONNECTION
DETAIL VIEW

NOTES:

1. TIGHTEN TERMINAL BLOCK SCREWS TO 16 IN/LBS. TORQUE.
2. TERMINAL WIRE SIZE: 4-14 AWG.
3. FILTER INCLUDES CAPPANEL-161 (QTY. 2), CAPPANEL-157 (QTY. 1) & CAP-525SW (QTY. 1).

THE COMPONENT, PART OR ASSEMBLY DESCRIBED IN THIS DOCUMENT MUST COMPLY WITH THE EU(EUROPEAN UNION) DIRECTIVE RoHS2		MATERIAL		CONFIDENTIAL AND PROPRIETARY INFORMATION THIS DOCUMENT CONTAINS CONFIDENTIAL AND PROPRIETARY INFORMATION OF MTE CORPORATION AND MAY NOT BE USED, COPIED OR DISCLOSED TO OTHERS EXCEPT WITH THE AUTHORIZED WRITTEN PERMISSION OF MTE CORPORATION	
CONTAINS <0.1% OF ANY SVHC BY WEIGHT PER REACH REGULATION				DESCRIPTION	
UNLESS OTHERWISE SPECIFIED DIMENSIONS ARE IN INCHES [MM] TOLERANCES ARE: ANGLES: ± 1 ° 1 PLACE .X: ± .1 [2.5] 2 PLACE .XX: ± .03 [0.76] 3 PLACE .XXX: ± .010 [0.254]		DRAWN MN		DATE 03/04/16	
		CHECKED RH		DATE 03/08/16	
		APPROVED TL		DATE 10/09/18	
N83 W13330 Leon Road Menomonee Falls, WI 53051 USA 800.455.4683 262.253.8200		SIZE D		DWG No. CD SWGM0720E	
		SCALE 1:3		REV 00	
				SHEET 1 OF 1	

ECO No	DESCRIPTION	REV BY	DATE



D

C

B

A