

APPROX WEIGHT (LBS)
244

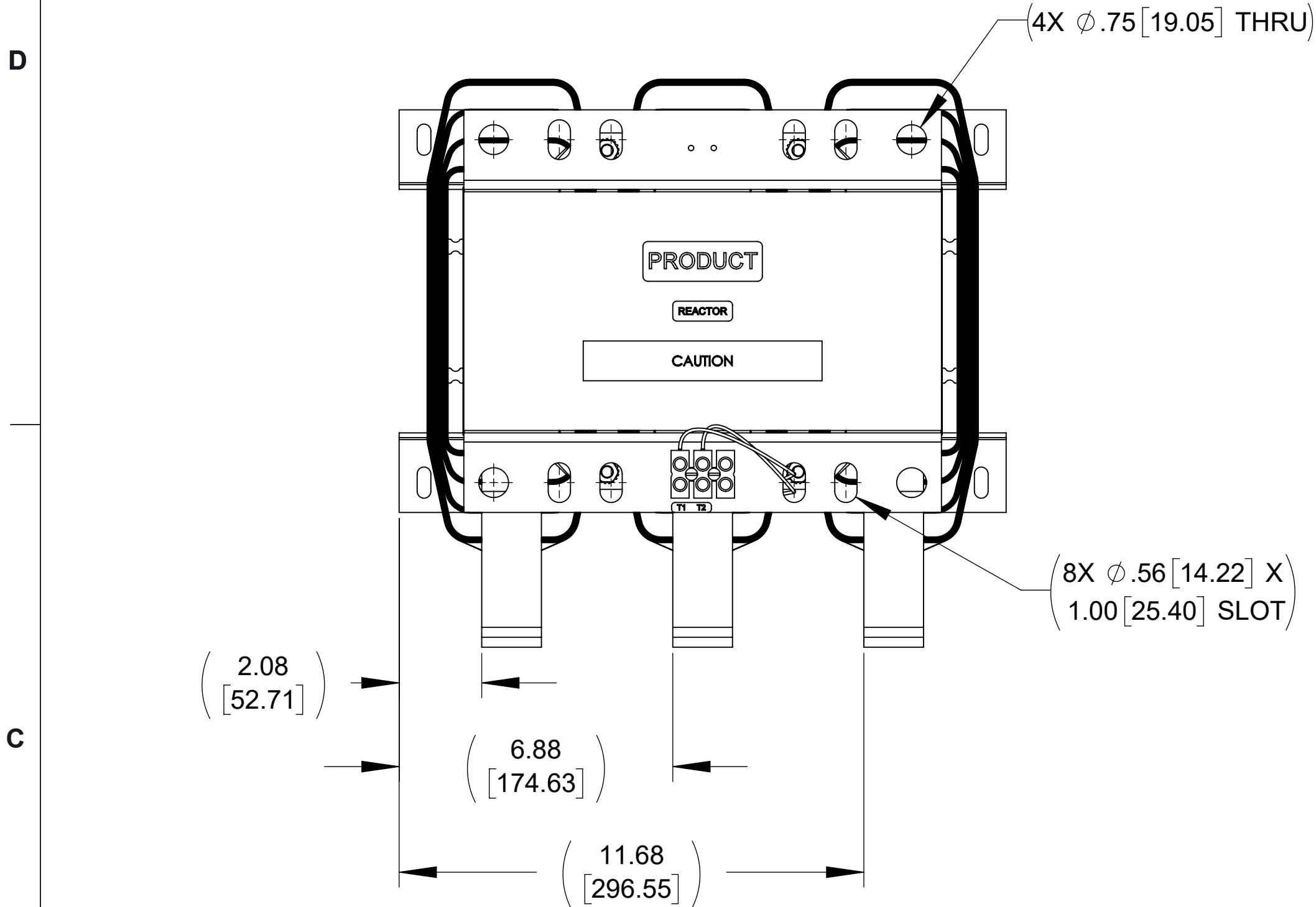
ECO No	DESCRIPTION	REV BY	DATE
M11976	CORRECTED LABEL DETAIL VIEW TO SHOW LABELS	WF	09/18/19

D

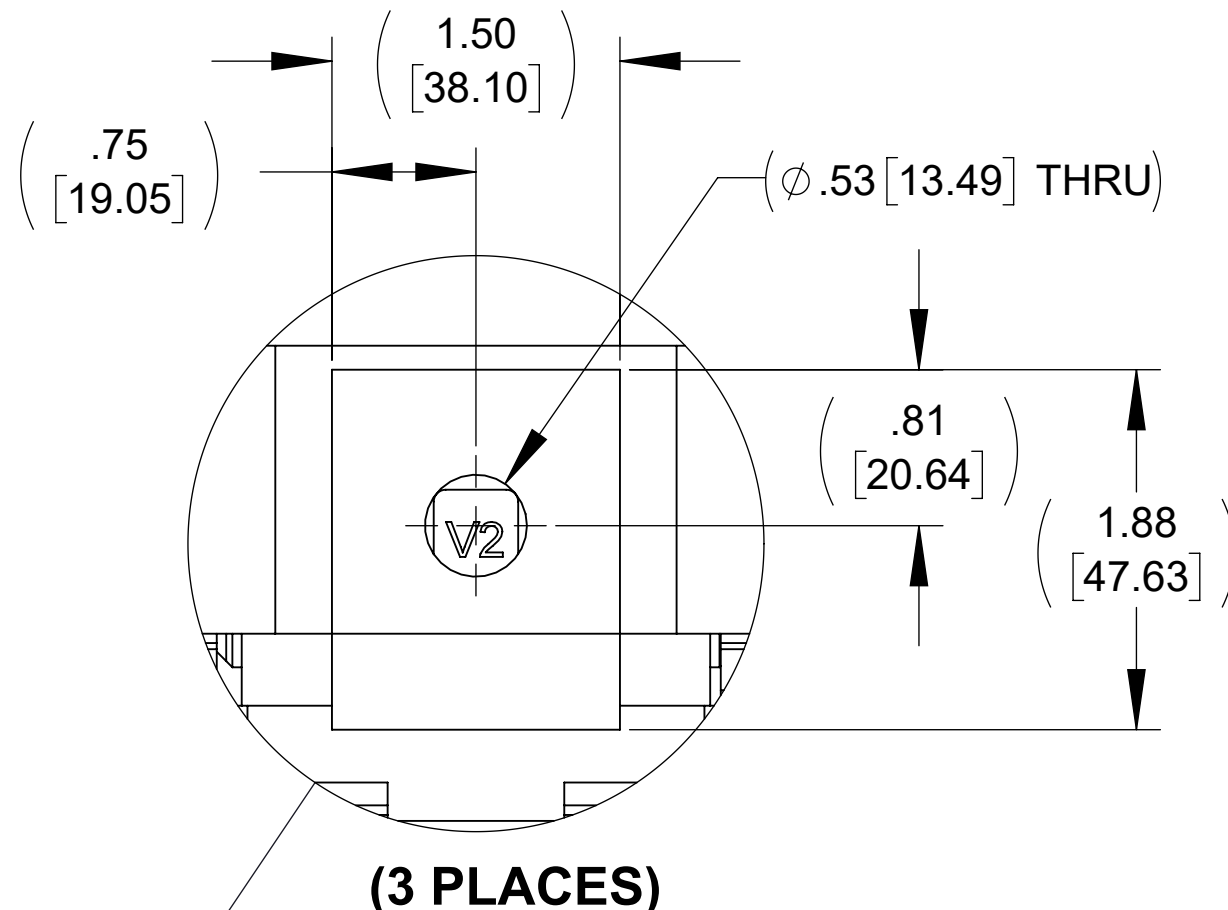
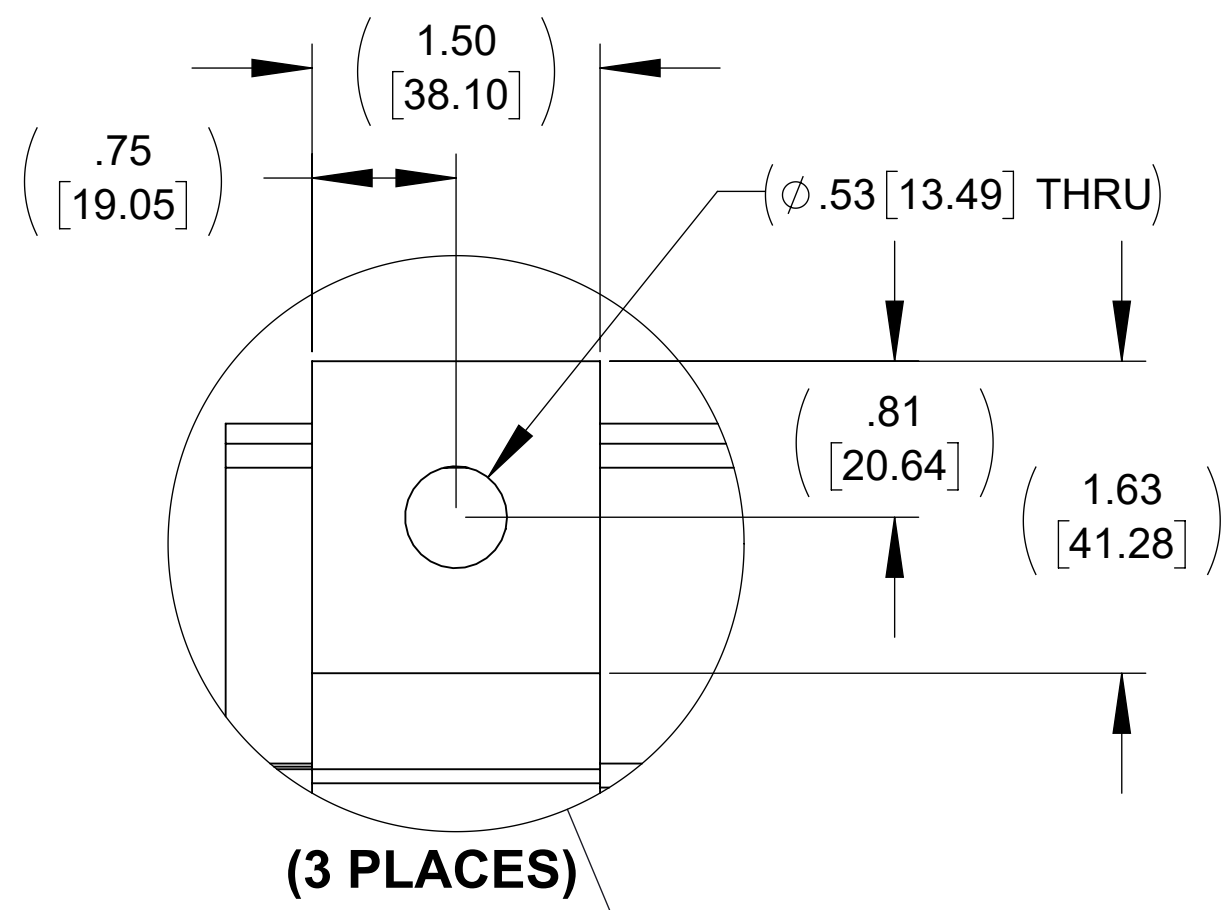
C

B

A

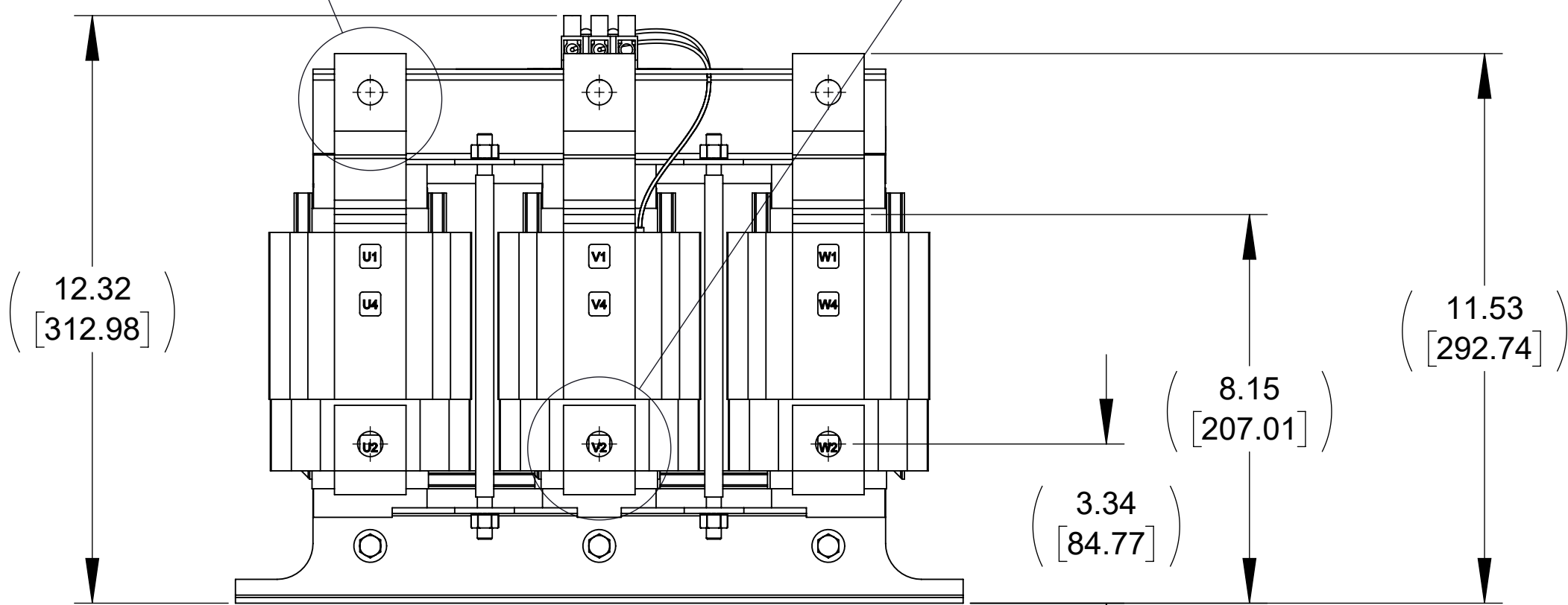


TOP VIEW

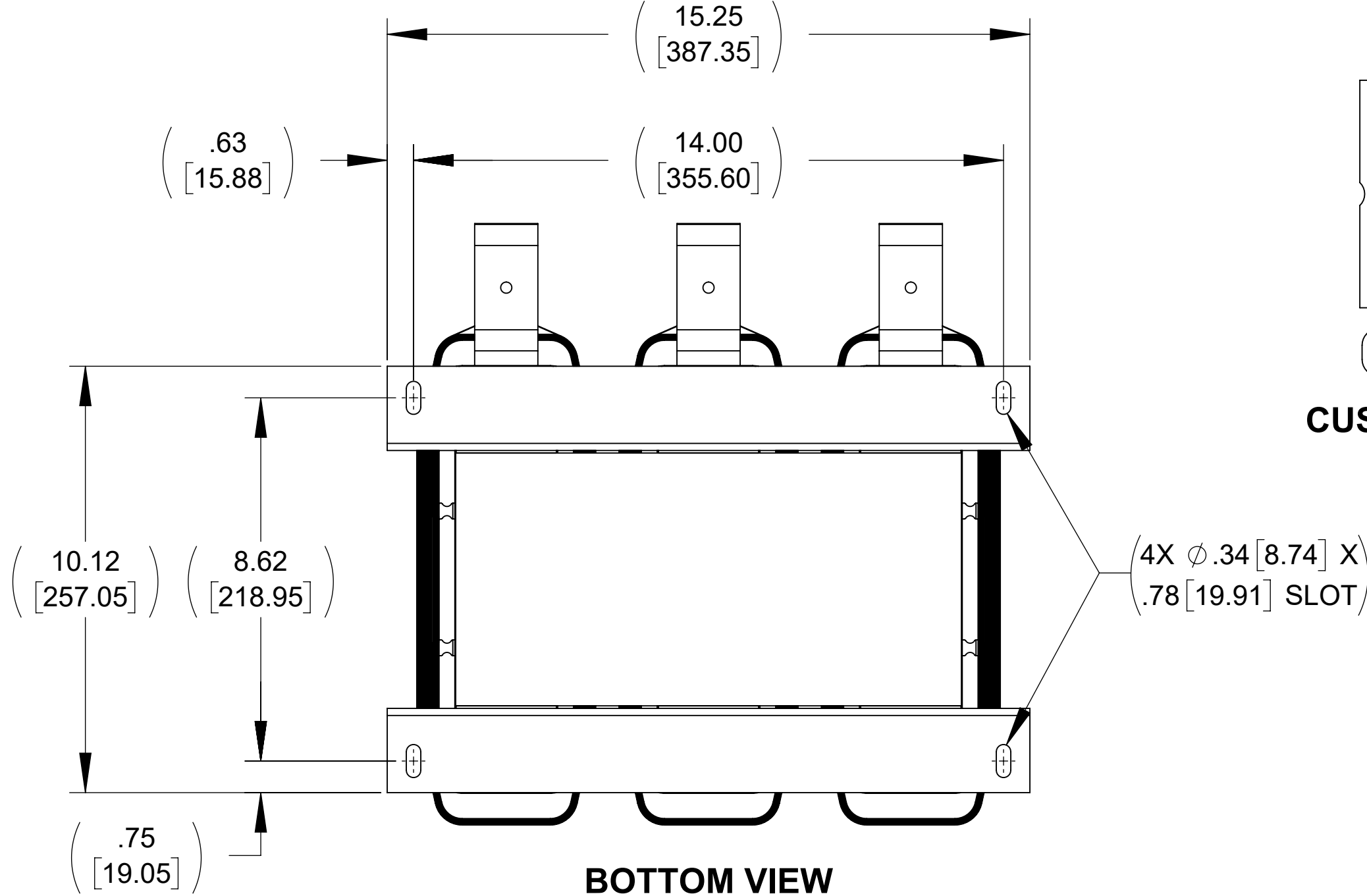


(3 PLACES)

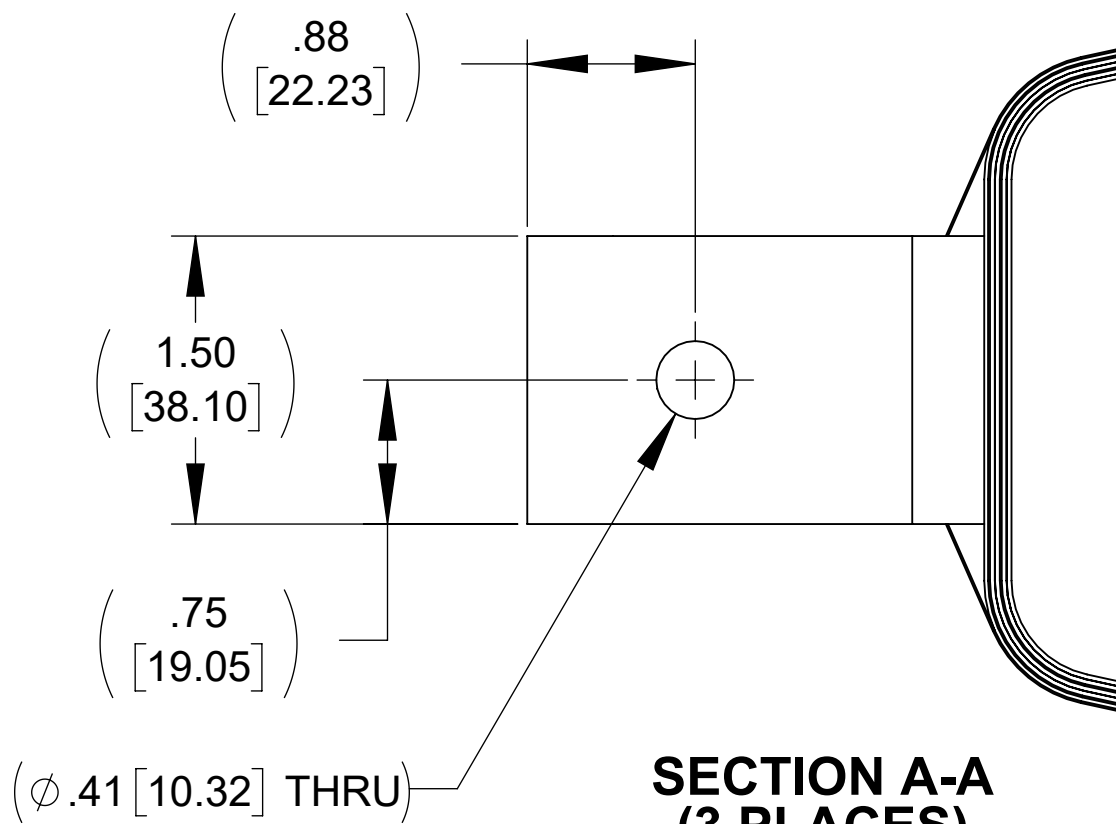
(3 PLACES)



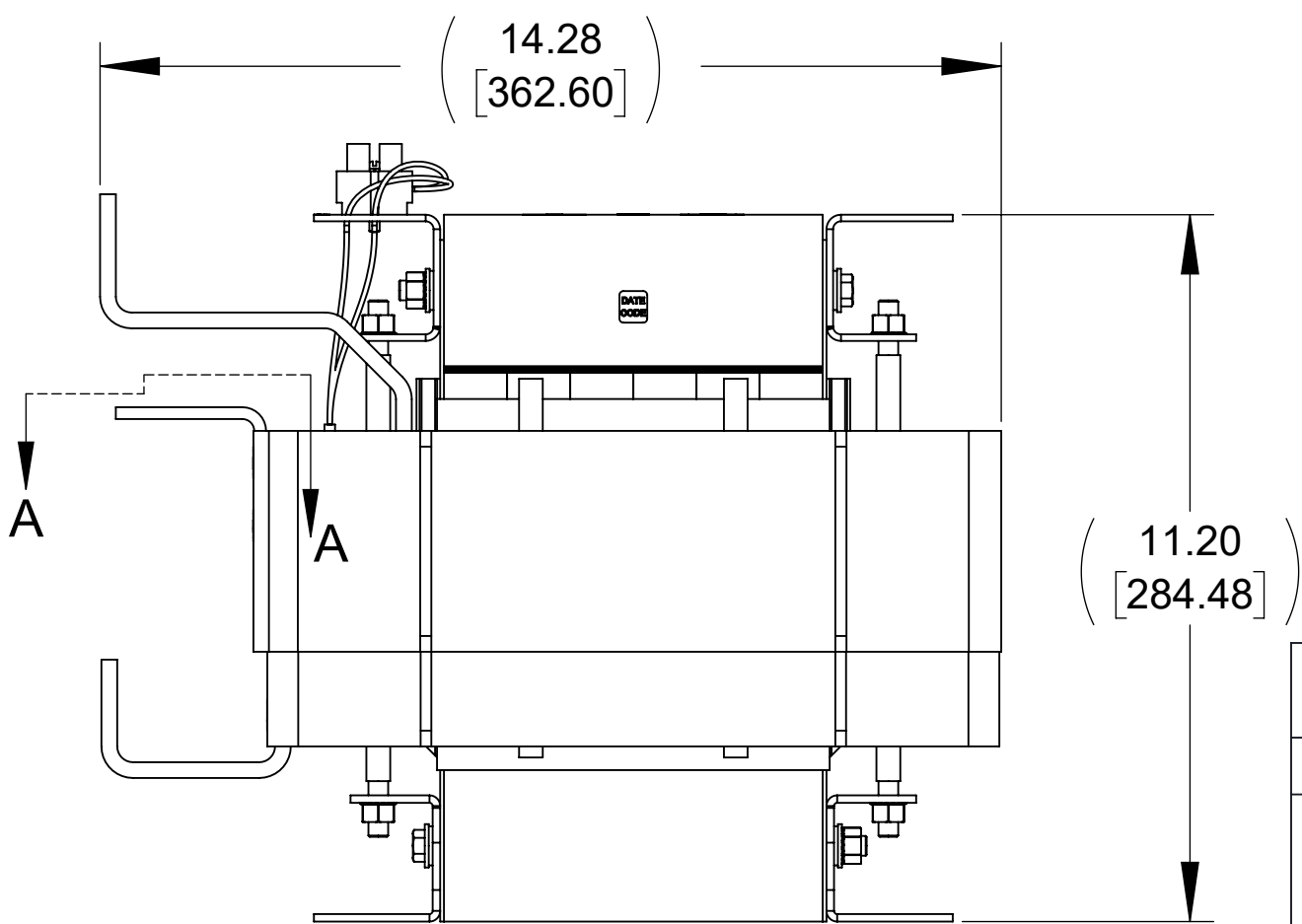
FRONT VIEW



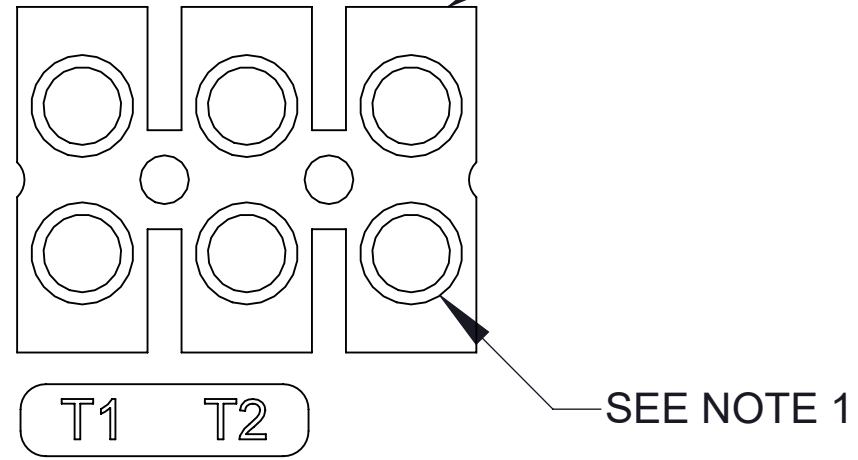
BOTTOM VIEW



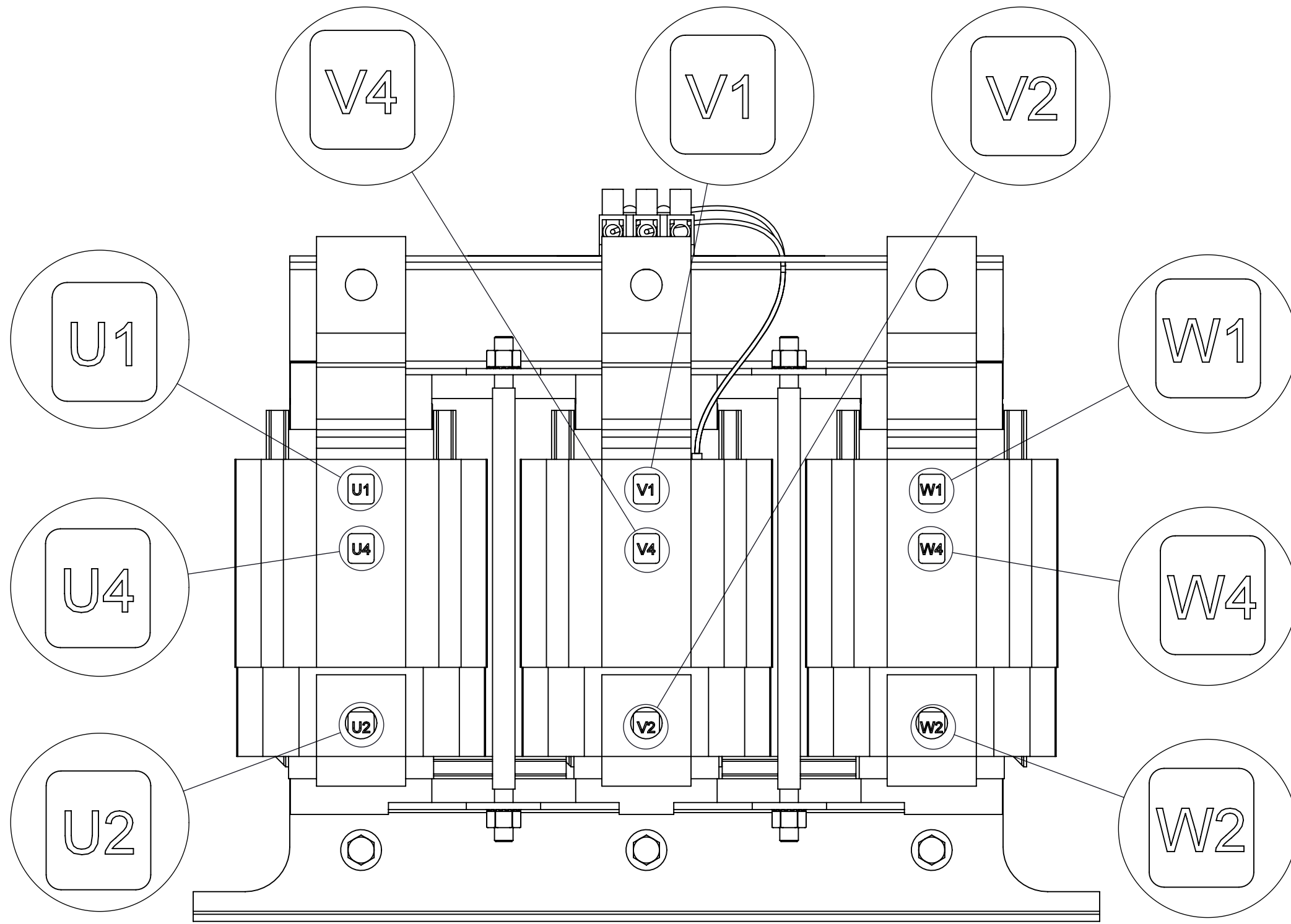
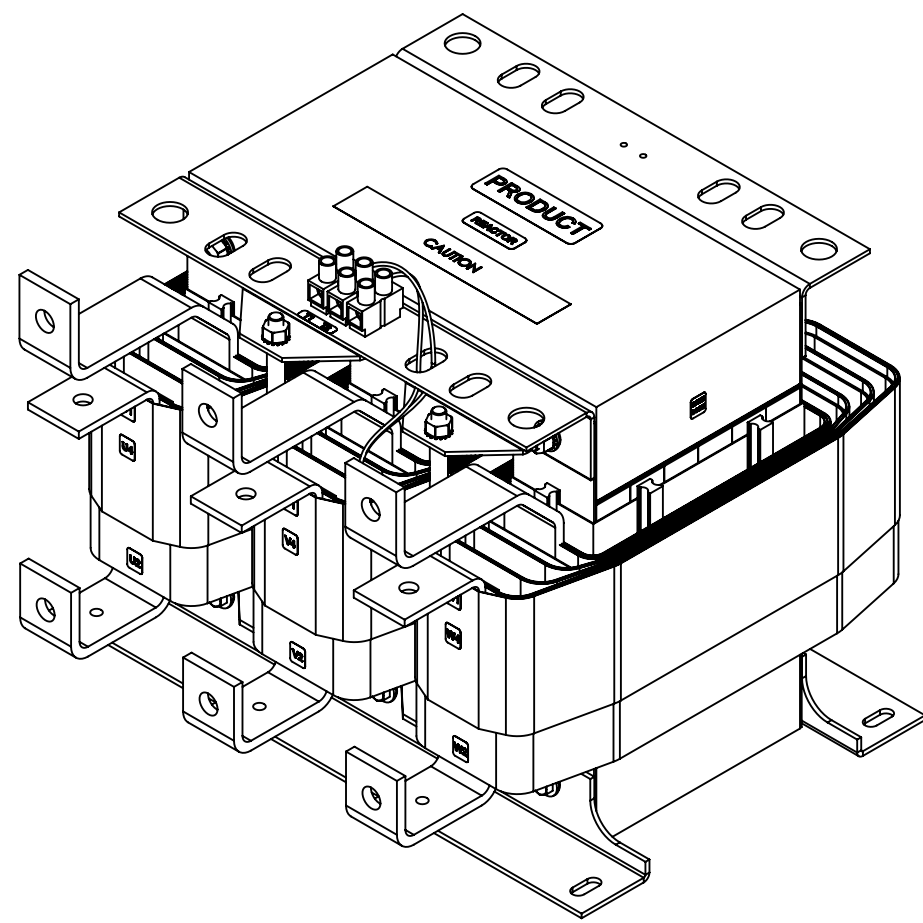
SECTION A-A
(3 PLACES)



RIGHT SIDE VIEW



CUSTOMER CONNECTION
DETAIL VIEW
(THERMAL)



CUSTOMER CONNECTION
DETAIL VIEW

- NOTES:
1. TIGHTEN TERMINAL BLOCK SCREWS TO 16 IN/LBS. TORQUE.
 2. TERMINAL WIRE SIZE: 4-14 AWG.
 3. FILTER INCLUDES: CAPPANEL-002 (QTY. 2).

THE COMPONENT, PART OR ASSEMBLY DESCRIBED IN THIS DOCUMENT MUST COMPLY WITH THE EU(EUROPEAN UNION) DIRECTIVE RoHS2		MATERIAL		CONFIDENTIAL AND PROPRIETARY INFORMATION THIS DOCUMENT CONTAINS CONFIDENTIAL AND PROPRIETARY INFORMATION OF MTE CORPORATION AND MAY NOT BE USED, COPIED OR DISCLOSED TO OTHERS EXCEPT WITH THE AUTHORIZED WRITTEN PERMISSION OF MTE CORPORATION	
CONTAINS <0.1% OF ANY SVHC BY WEIGHT PER REACH REGULATION				DESCRIPTION	
UNLESS OTHERWISE SPECIFIED DIMENSIONS ARE IN INCHES [MM] TOLERANCES ARE:				SWG HF 5kHz 300Hz FILTER 415A 480V, OPEN PANEL	
ANGLES: ± 1 °				SIZE	
1 PLACE .X: ± .1 [2.5]				DWG No.	
2 PLACE .XX: ± .03 [0.76]				D CD SWGM0415D-HF05300	
3 PLACE .XXX: ± .010 [0.254]				REV	
				02	
				SCALE	
				1:3	
				SHEET 1 OF 1	

D

C

B

A