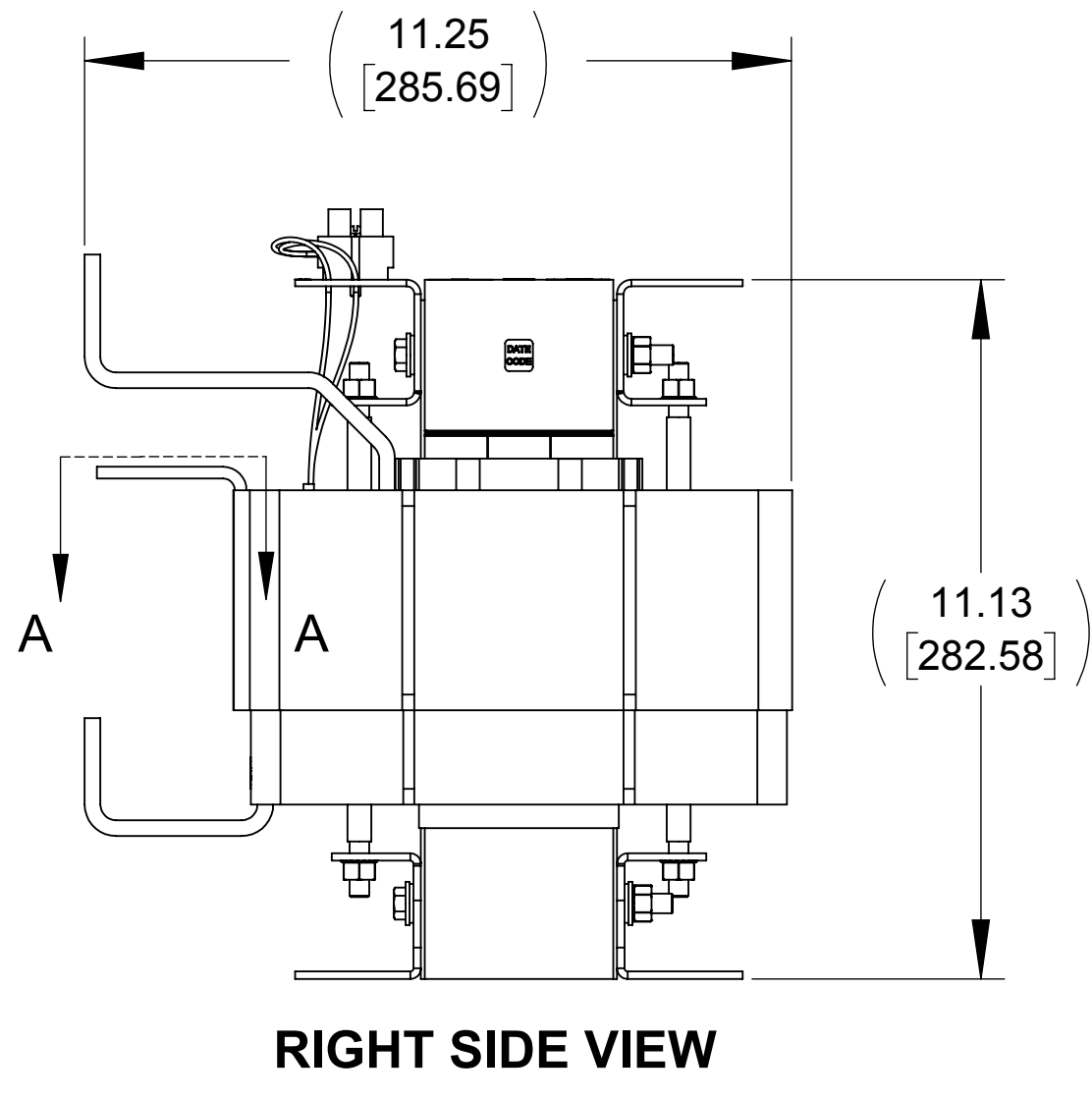
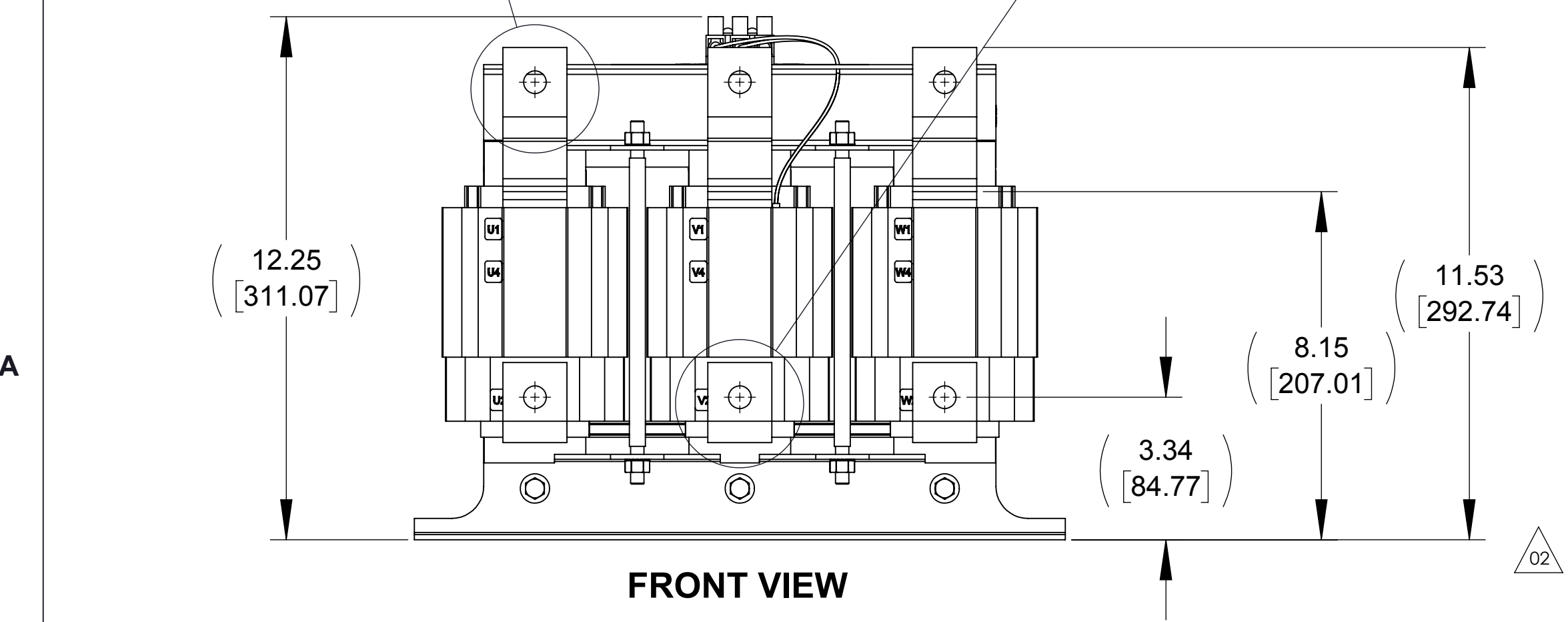
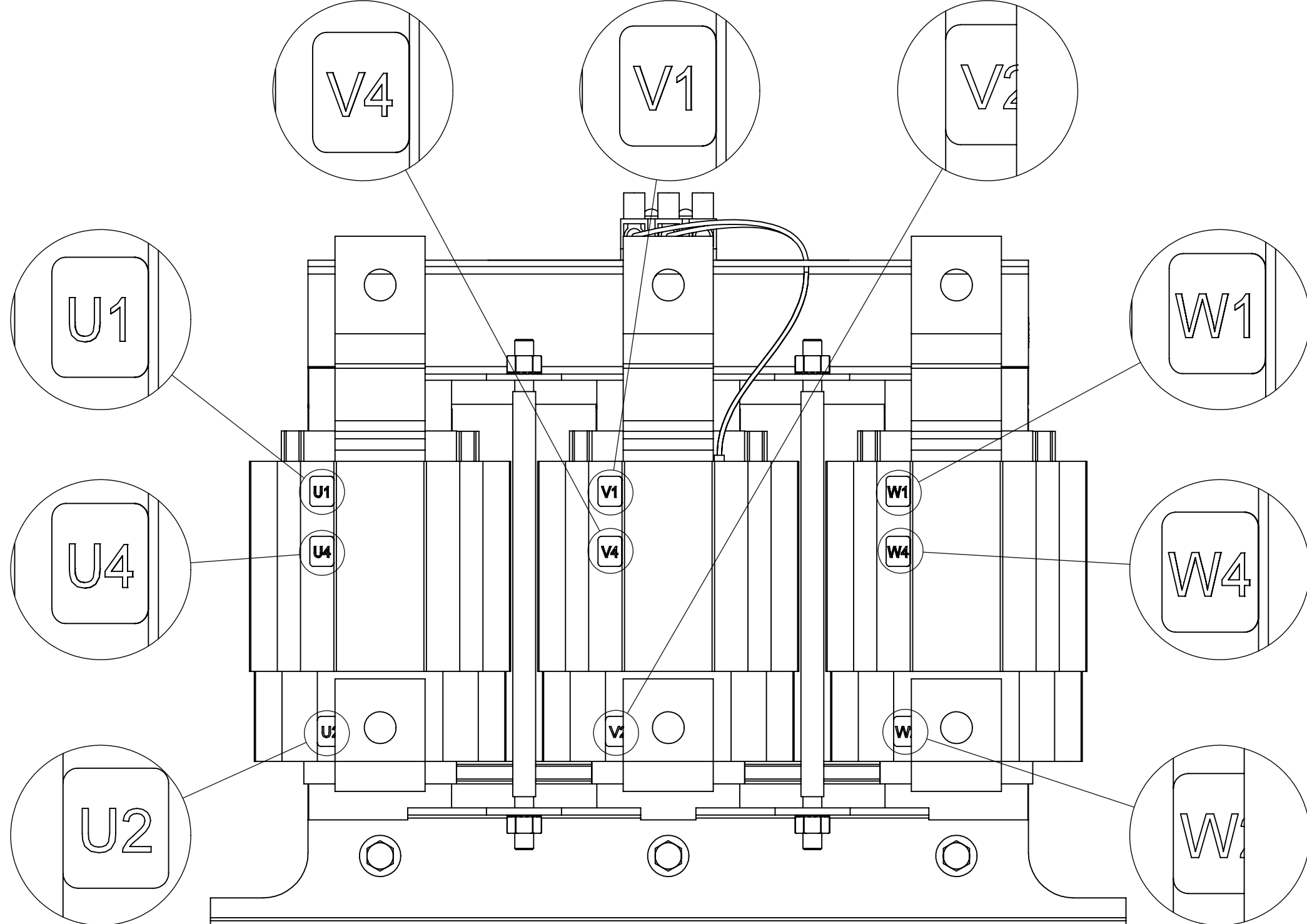
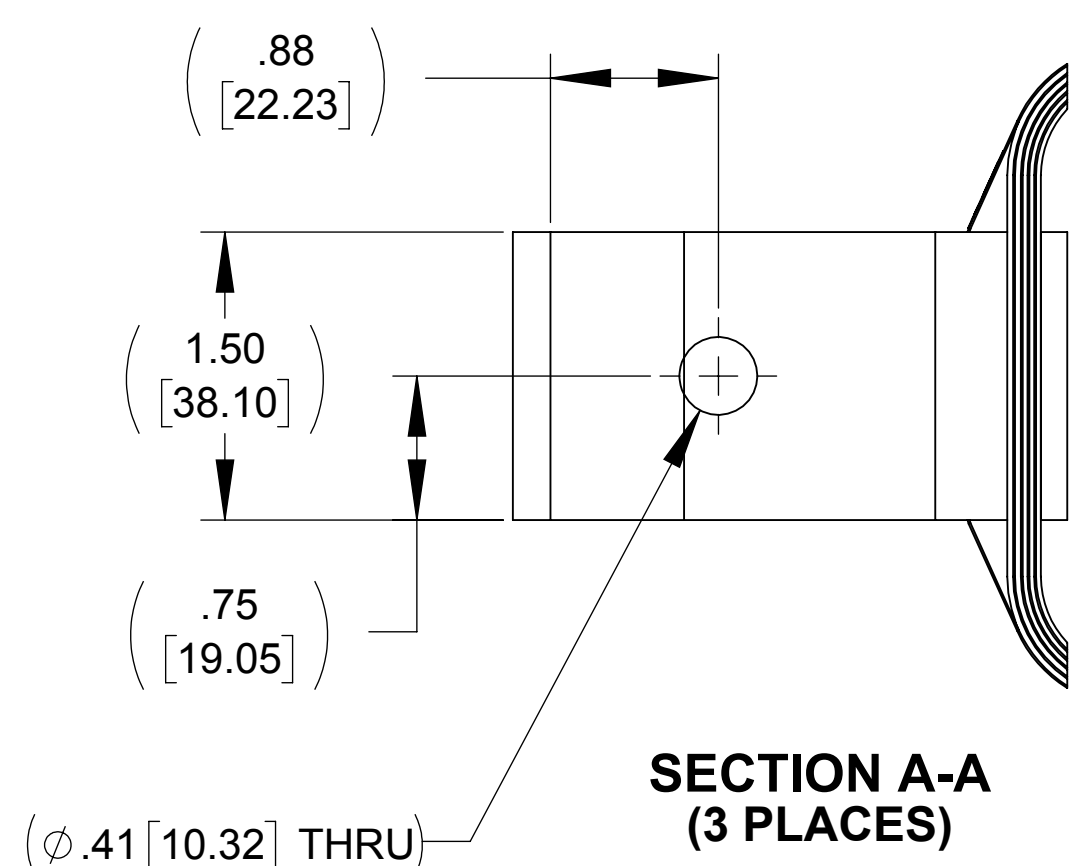
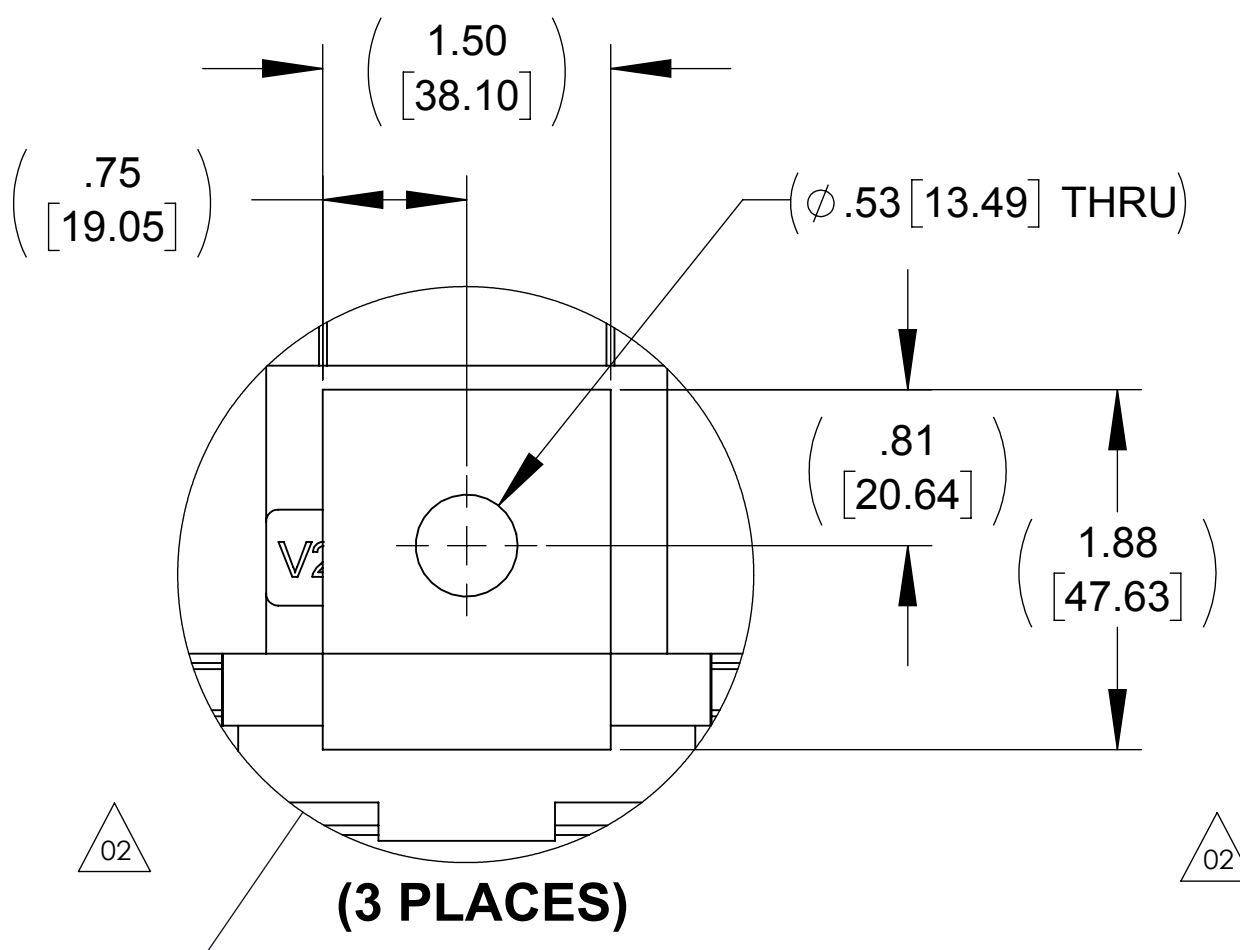
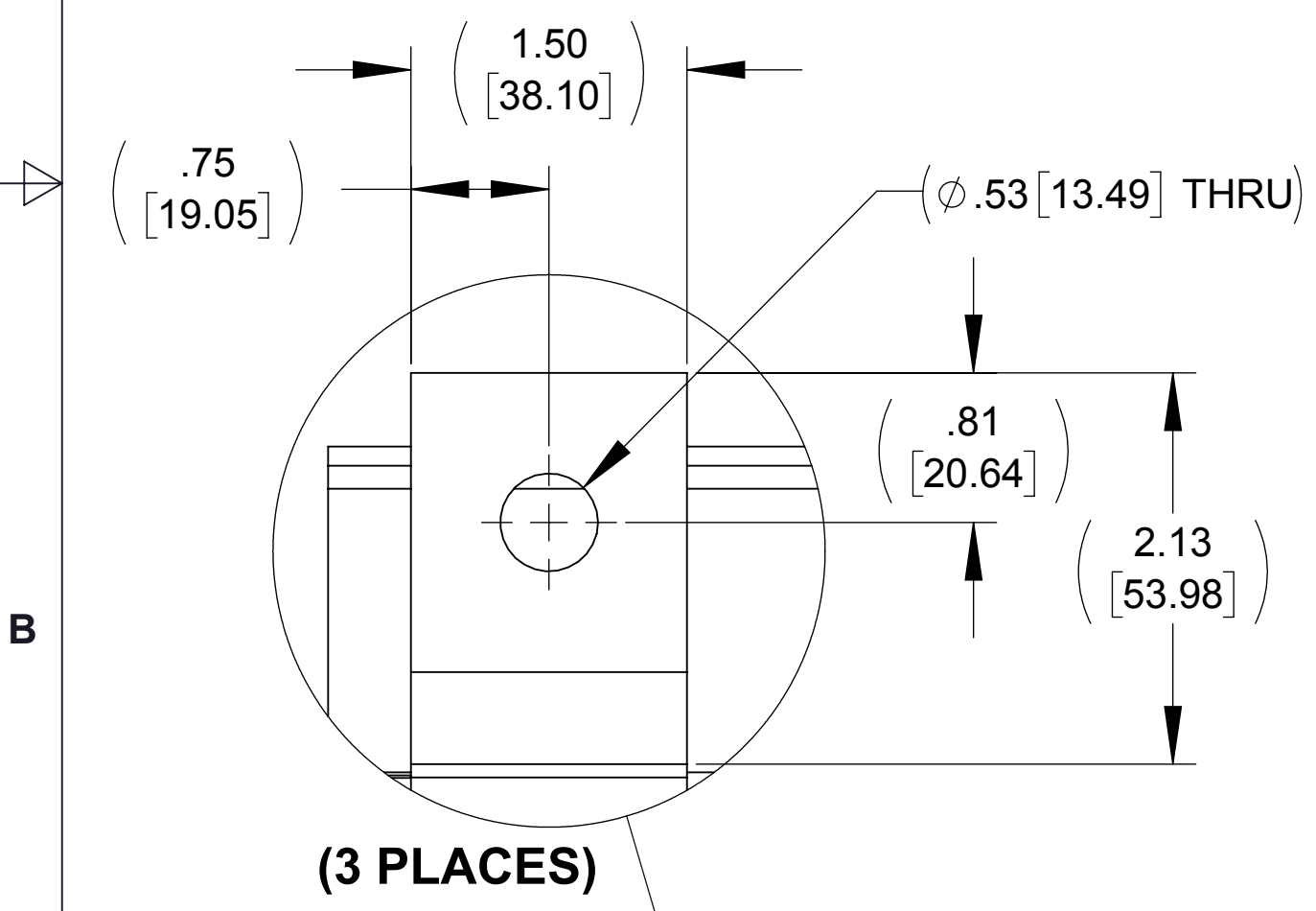
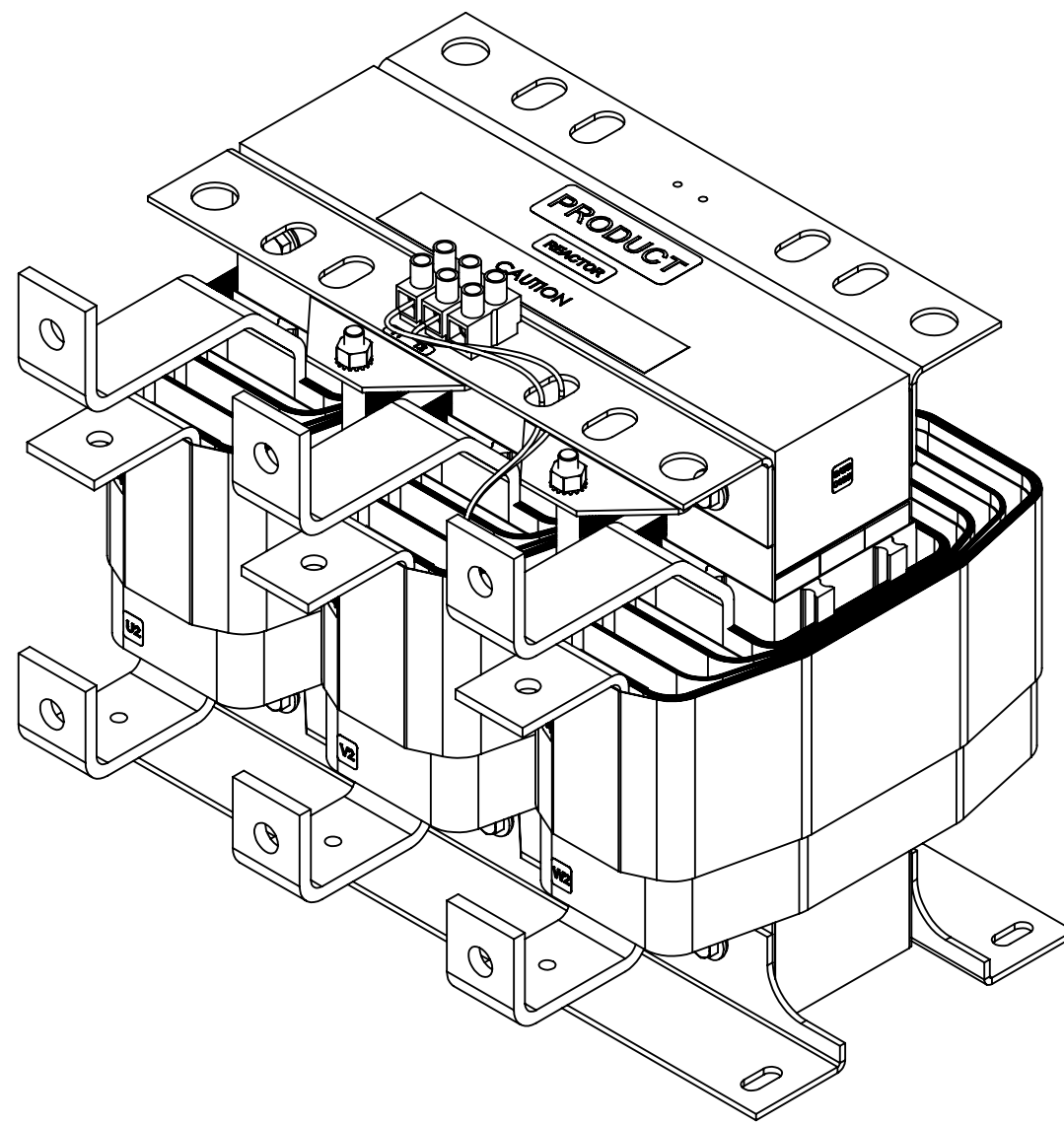
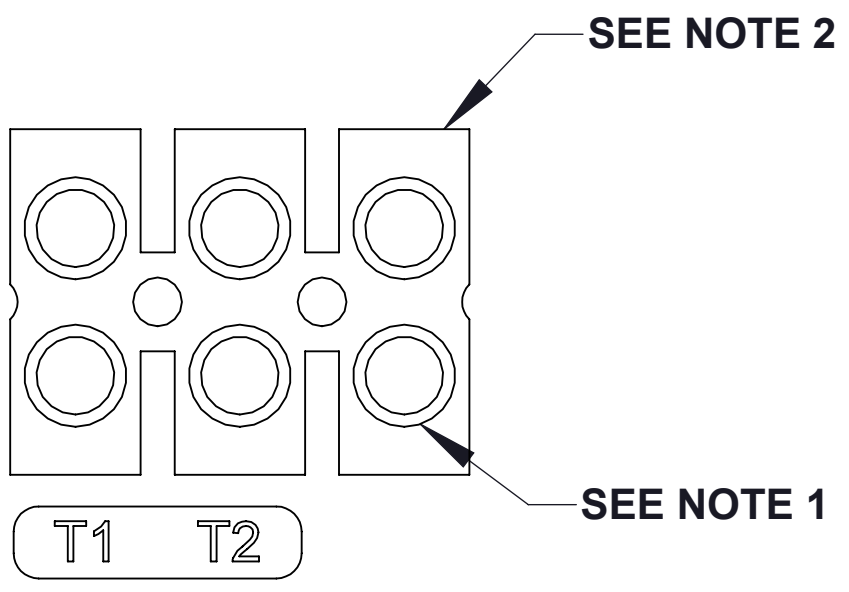
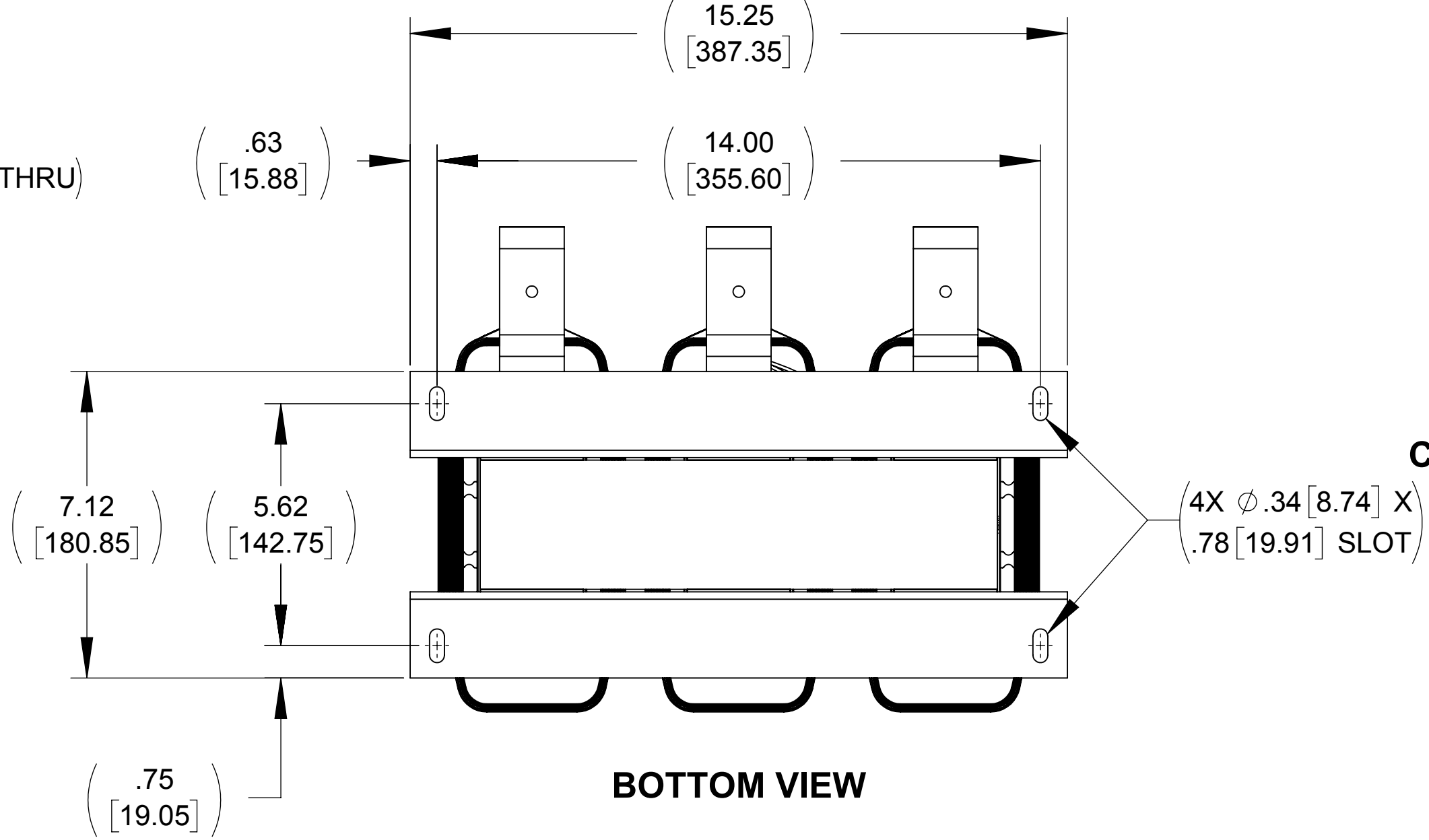
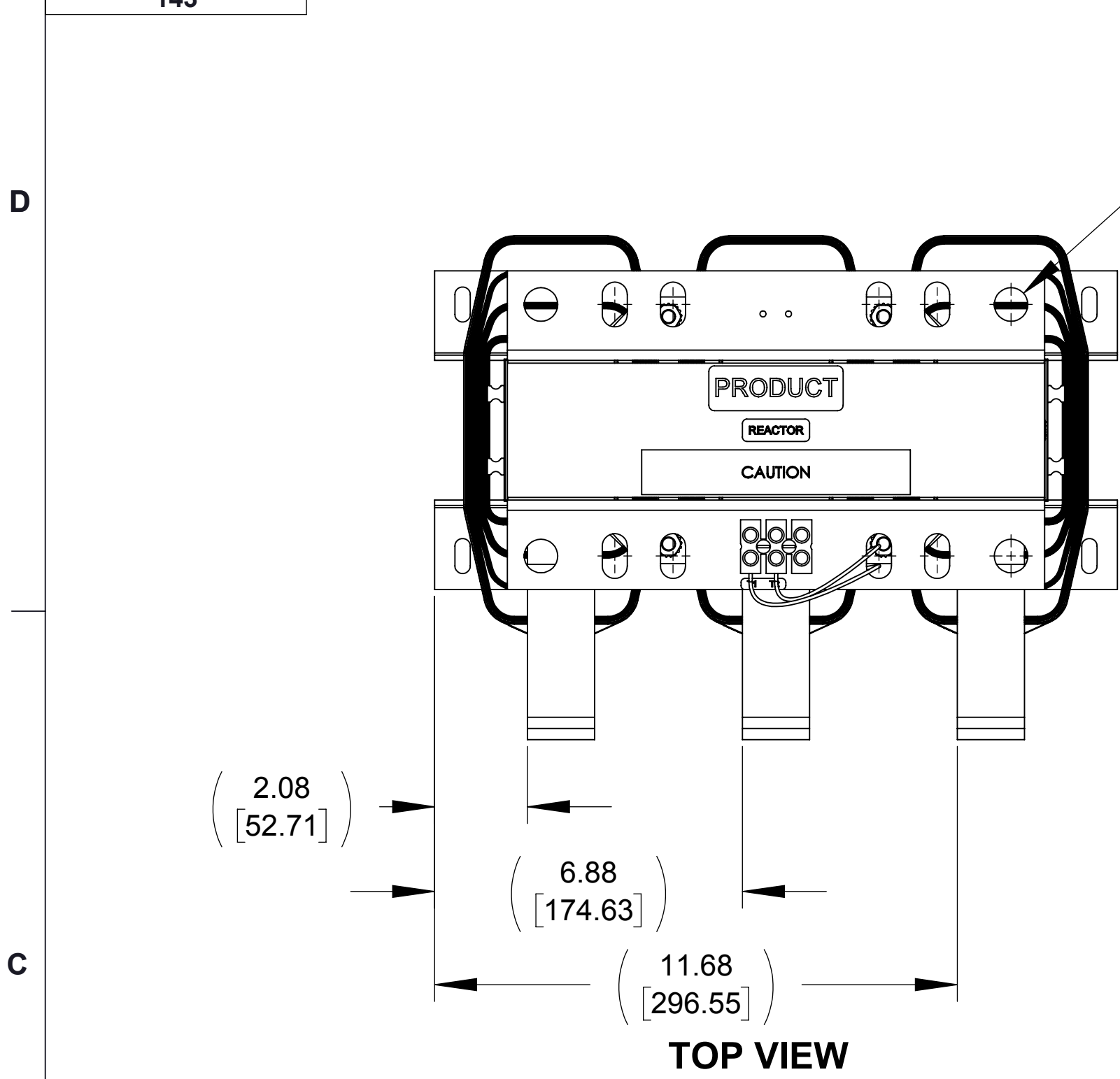


APPROX. WEIGHT (LBS)
143

ECO No	DESCRIPTION	REV BY	DATE
M11976	CORRECTED DISASSOCIATED DIMENSIONS	WF	09/18/19



- NOTES:
1. TIGHTEN TERMINAL BLOCK SCREWS TO 16 IN/LBS. TORQUE.
2. TERMINAL WIRE SIZE: 4-14 AWG.
3. FILTER INCLUDES: CAPPANEL-002 (QTY. 1).

THE COMPONENT, PART OR ASSEMBLY DESCRIBED IN THIS DOCUMENT MUST COMPLY WITH THE EU(EUROPEAN UNION) DIRECTIVE RoHS2		MATERIAL		CONFIDENTIAL AND PROPRIETARY INFORMATION THIS DOCUMENT CONTAINS CONFIDENTIAL AND PROPRIETARY INFORMATION OF MTE CORPORATION AND MAY NOT BE USED, COPIED OR DISCLOSED TO OTHERS EXCEPT WITH THE AUTHORIZED WRITTEN PERMISSION OF MTE CORPORATION	
CONTAINS <0.1% OF ANY SVHC BY WEIGHT PER REACH REGULATION				DESCRIPTION	
UNLESS OTHERWISE SPECIFIED DIMENSIONS ARE IN INCHES [MM] TOLERANCES ARE: ANGLES: ± 1 ° 1 PLACE .X: ± .1 [2.5] 2 PLACE .XX: ± .03 [0.76] 3 PLACE .XXX: ± .010 [0.254]		DRAWN MM 01/30/15		DATE 01/30/15	
		CHECKED WF 09/18/19		DATE 09/18/19	
		APPROVED AK 09/19/19		DATE 09/19/19	
		SCALE 1:3		REV 02	
				SHEET 1 OF 1	



N83 W13330 Leon Road
Menomonee Falls, WI 53051 USA
800.455.4683
262.253.8200

SWG HF 5kHz 300Hz FILTER
250A 480V, OPEN PANEL

D CD SWGM0250D-HF05300