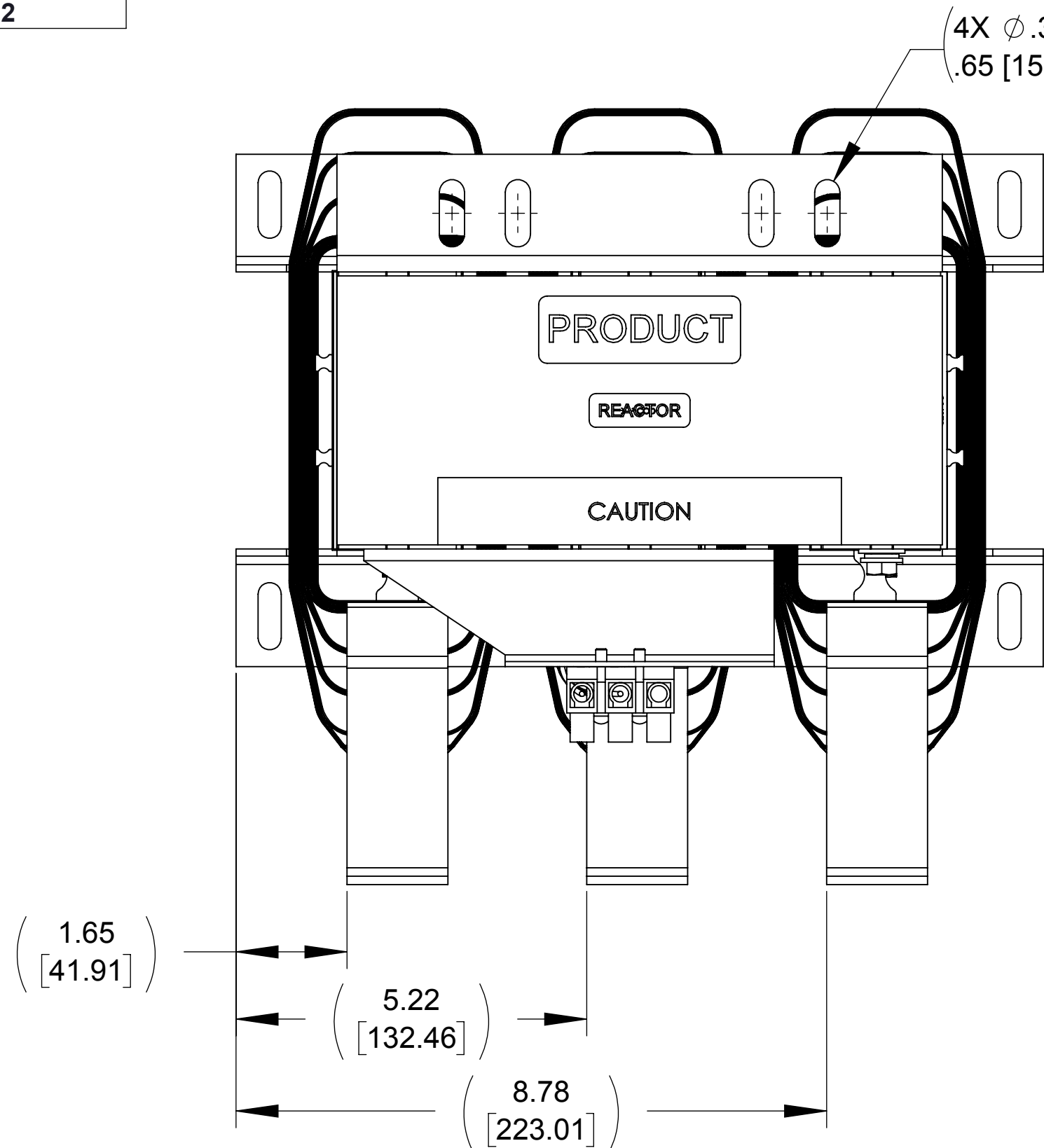


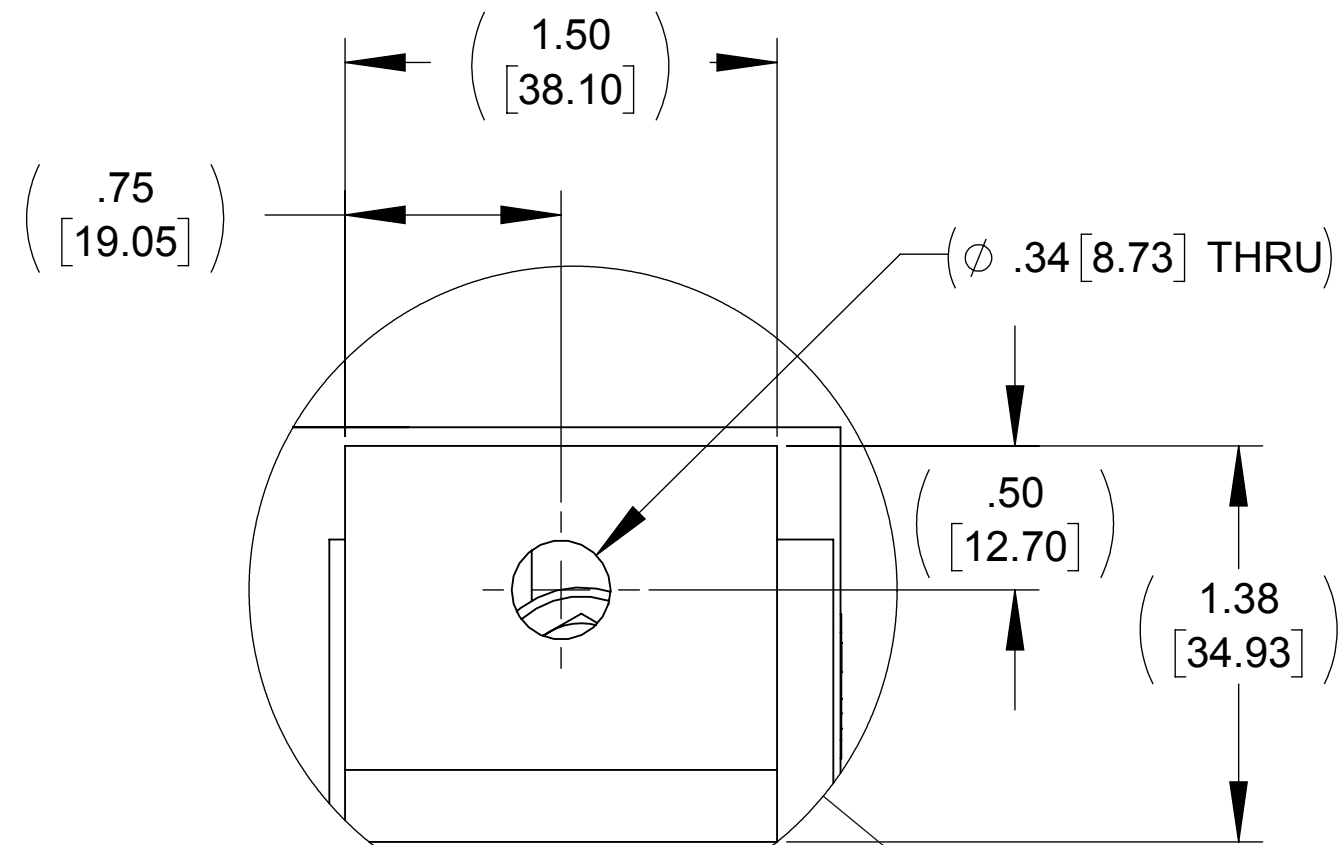
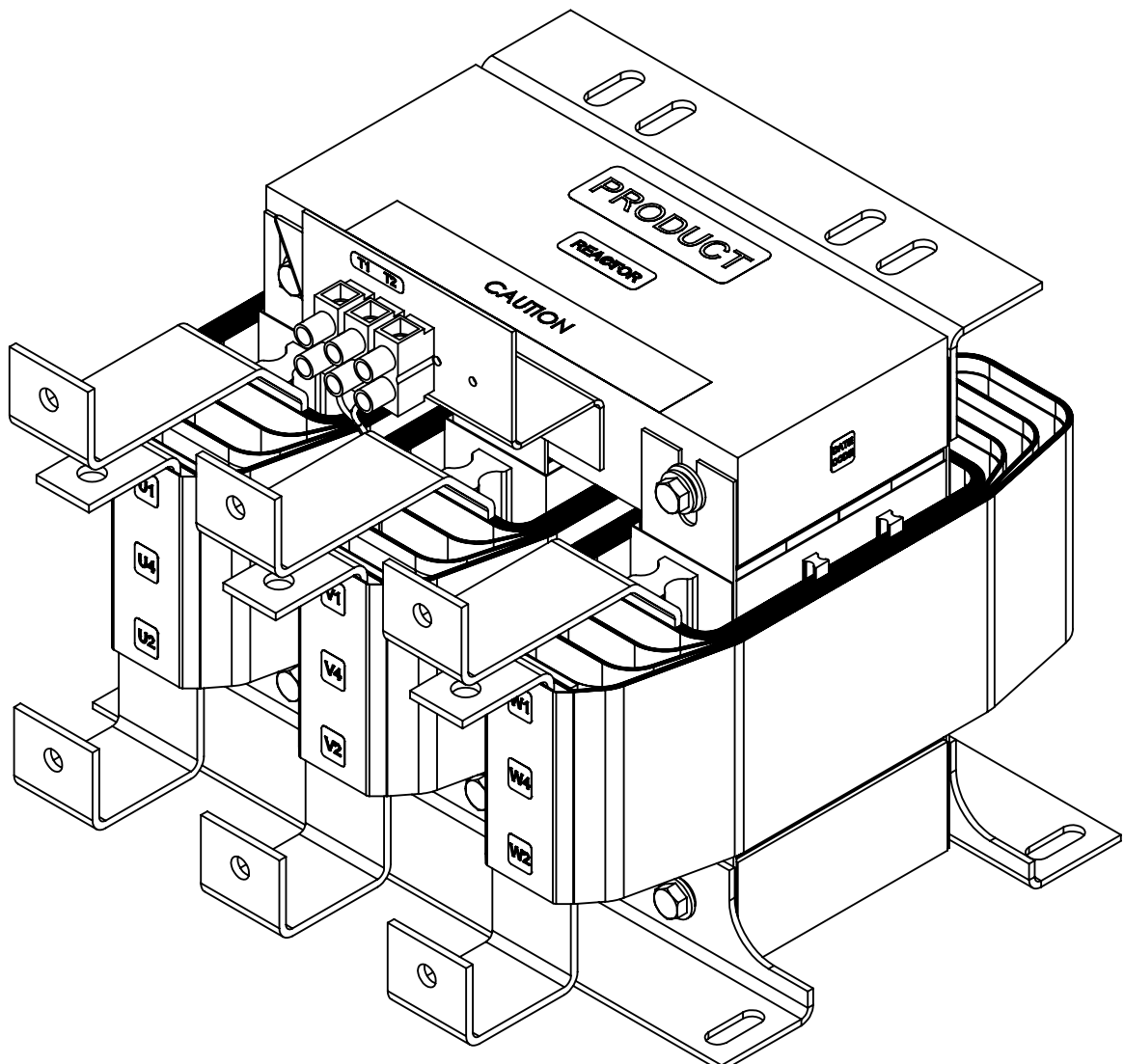
APPROX WEIGHT  
(LBS)  
92

ECO No	DESCRIPTION	REV BY	DATE
M9963	CHANGED DRAWING TO REFLECT REACTOR CHANGES.	RR	09/23/16



TOP VIEW

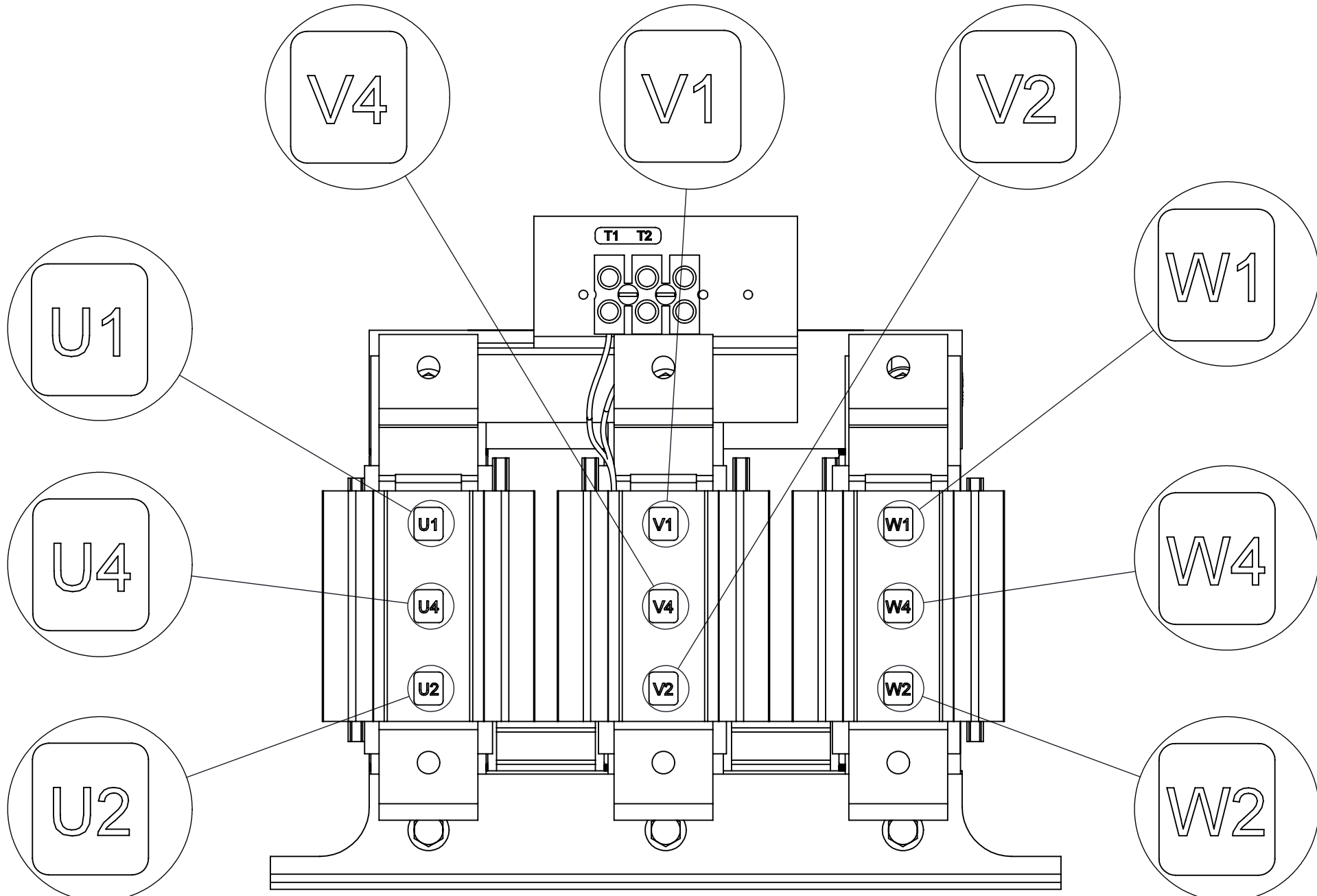
BOTTOM VIEW



(3 PLACES)

(3 PLACES)

SECTION A-A  
(3 PLACES)



CUSTOMER CONNECTION  
DETAIL VIEW

NOTES:

- TIGHTEN TERMINAL BLOCK SCREWS TO 16 IN/LBS. TORQUE.
- TERMINAL WIRE SIZE: 4 - 14 AWG.
- FILTER INCLUDES: CAPPANEL-008 (QTY. 1)

THE COMPONENT, PART OR ASSEMBLY DESCRIBED IN THIS DOCUMENT MUST COMPLY WITH THE EU(EUROPEAN UNION) DIRECTIVE RoHS2			MATERIAL		CONFIDENTIAL AND PROPRIETARY INFORMATION THIS DOCUMENT CONTAINS CONFIDENTIAL AND PROPRIETARY INFORMATION OF MTE CORPORATION AND MAY NOT BE USED, COPIED OR DISCLOSED TO OTHERS EXCEPT WITH THE AUTHORIZED WRITTEN PERMISSION OF MTE CORPORATION		
CONTAINS <0.1% OF ANY SVHC BY WEIGHT PER REACH REGULATION					DESCRIPTION		
UNLESS OTHERWISE SPECIFIED DIMENSIONS ARE IN INCHES [MM] TOLERANCES ARE:					SWG HF 5kHz 300Hz FILTER 130A 480V, OPEN PANEL		
ANGLES: ± 1 °			DRAWN MM		DATE 01/29/15		
1 PLACE .X: ± .1 [2.5]			CHECKED JM		DATE 11/09/16		
2 PLACE .XX: ± .03 [0.76]			APPROVED JM		DATE 11/09/16		
3 PLACE .XXX: ± .010 [0.254]					SIZE D CD SWGM0130D-HF05300		
					SCALE 1:2		
					REV 01		
					SHEET 1 OF 1		



N83 W13330 Leon Road  
Menomonee Falls, WI 53051 USA  
800.455-4683  
262.253-8200