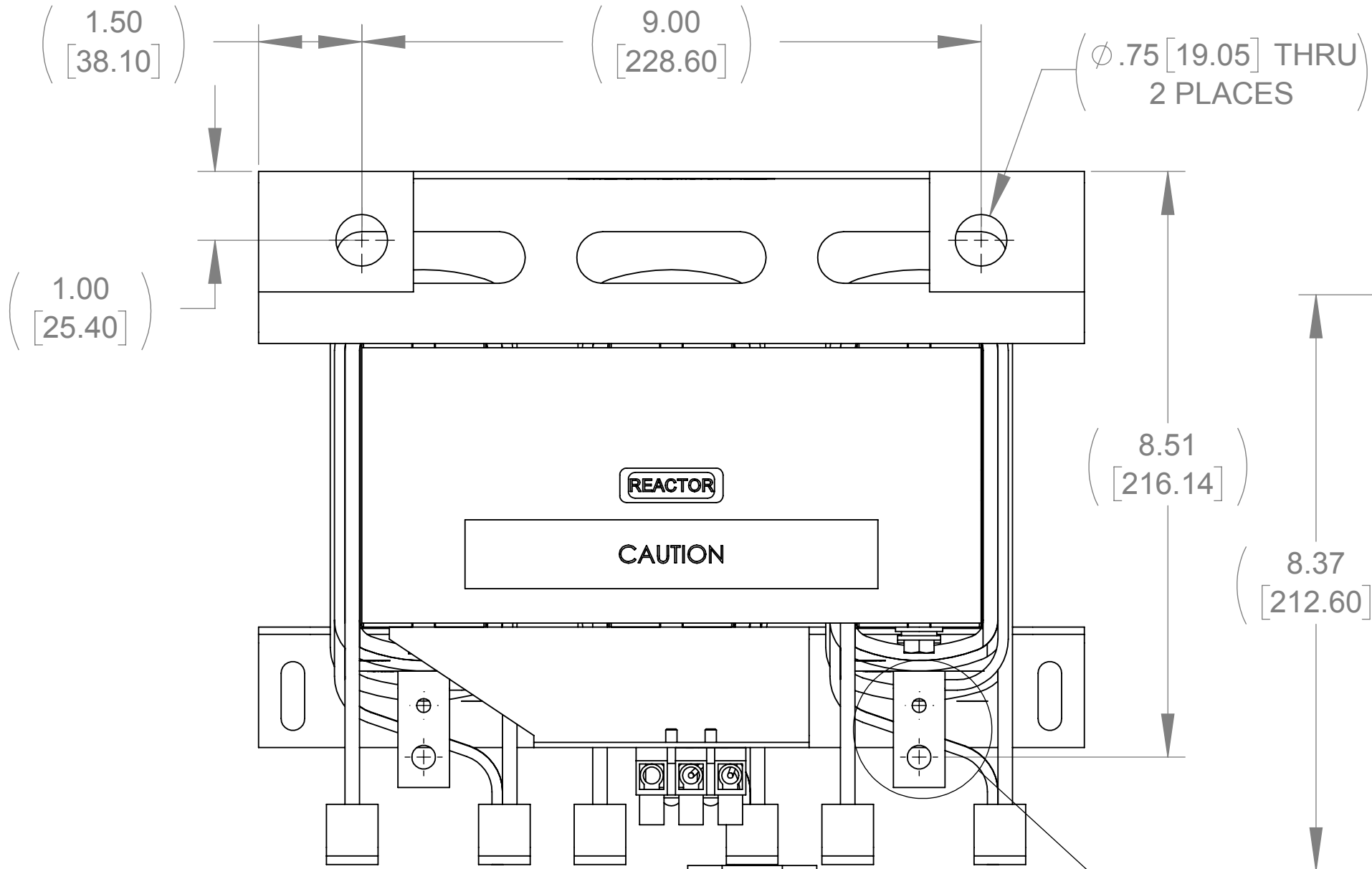
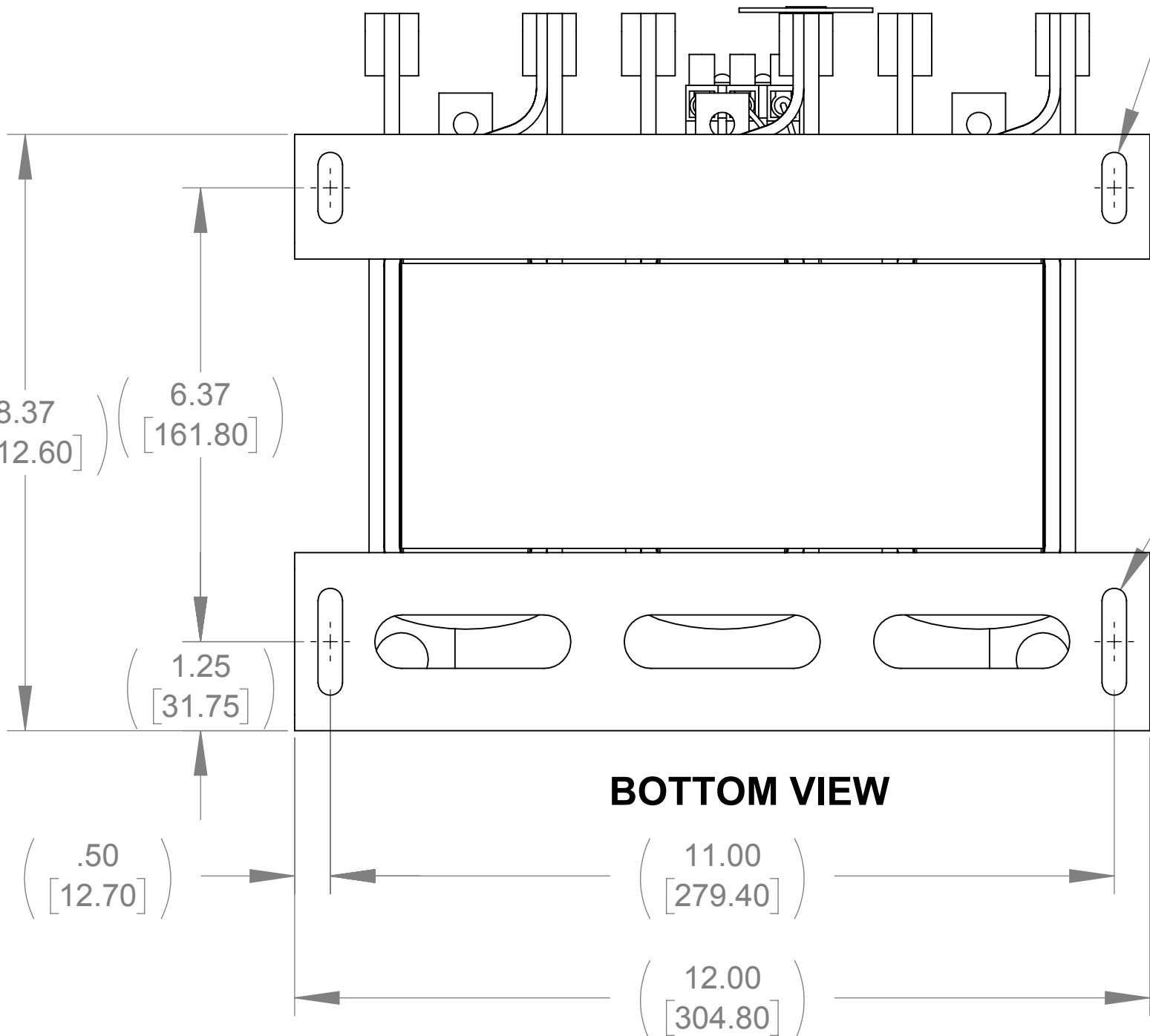


APPROX. WEIGHT
(LBS)
92

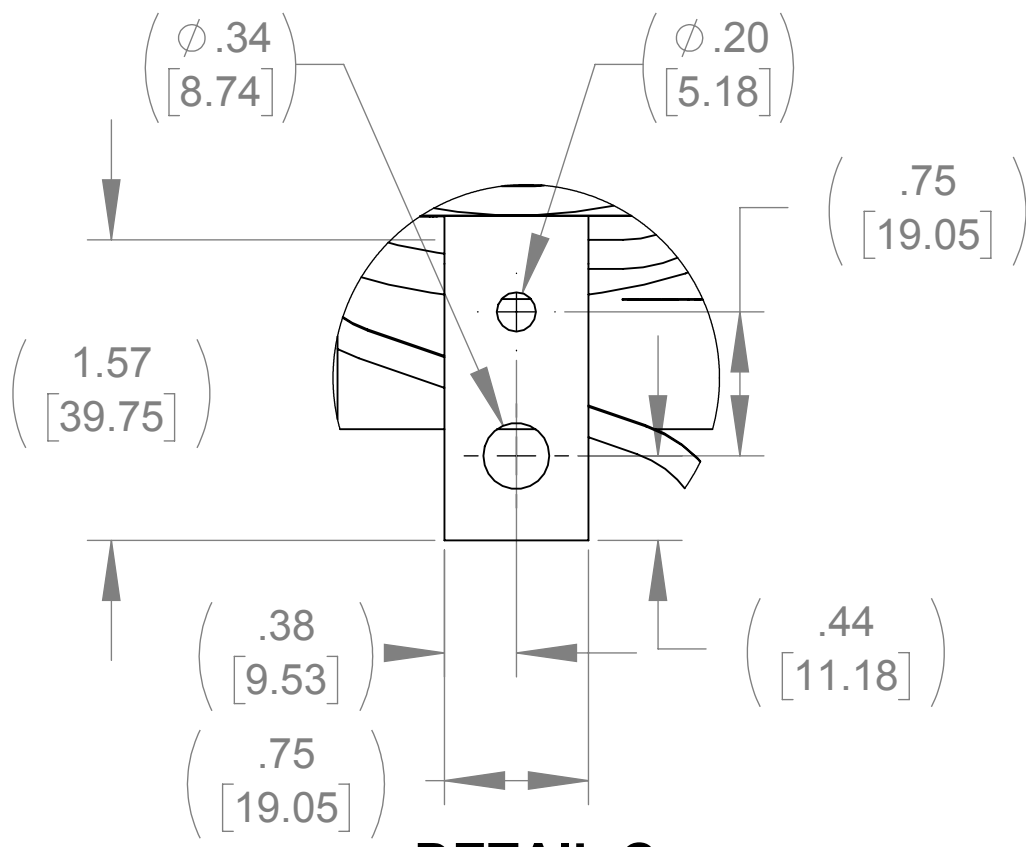
ECO No	DESCRIPTION	REV BY	DATE



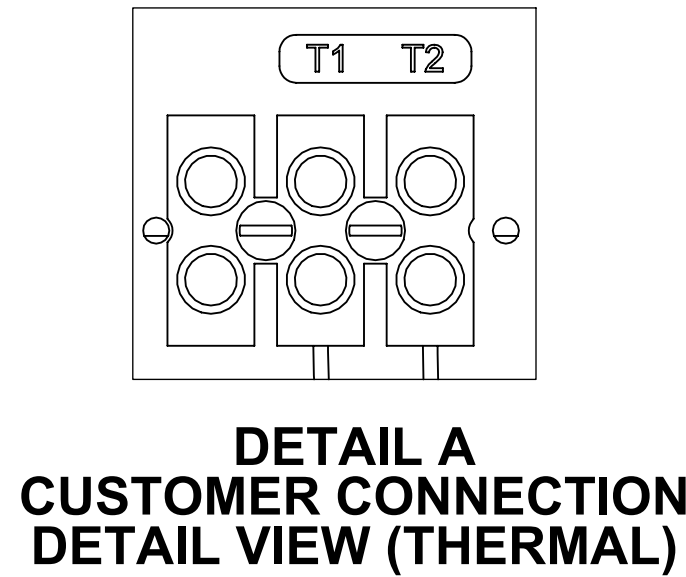
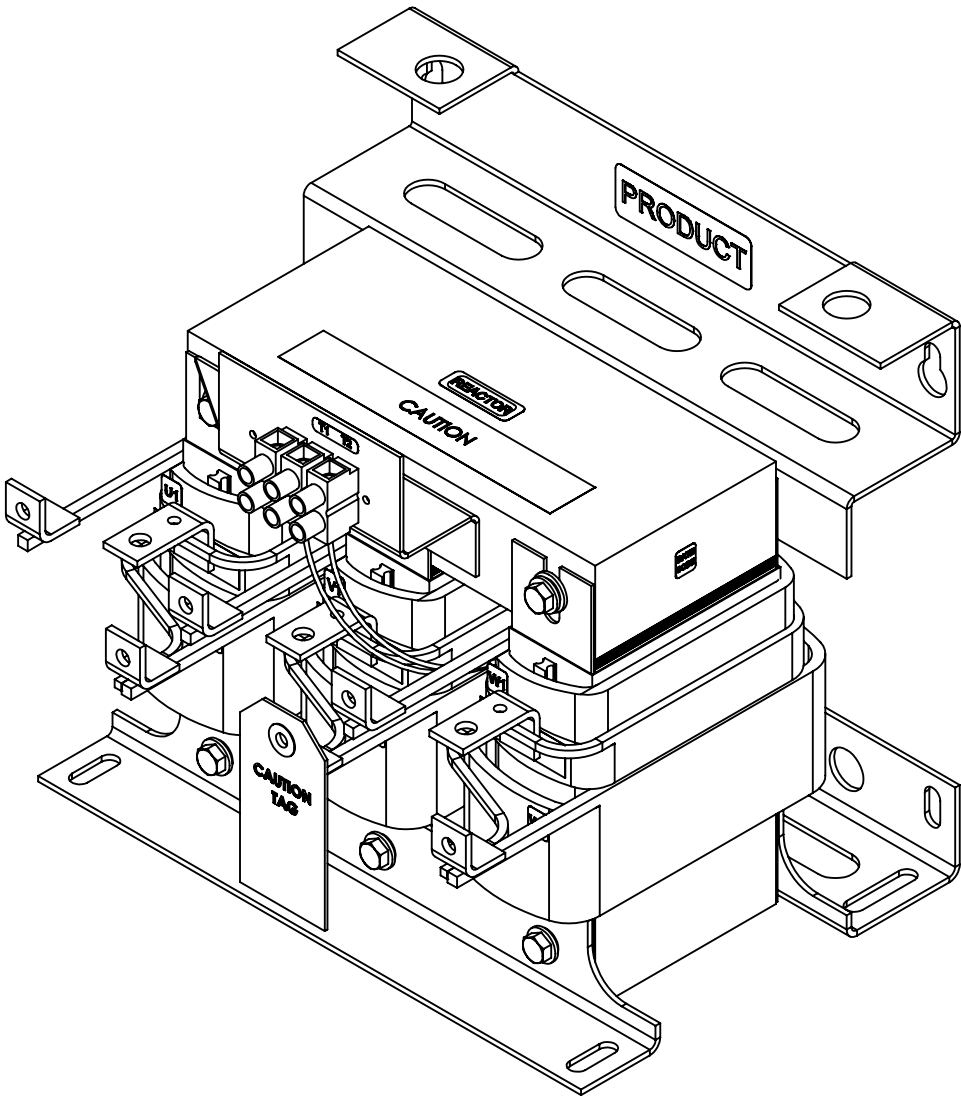
TOP VIEW



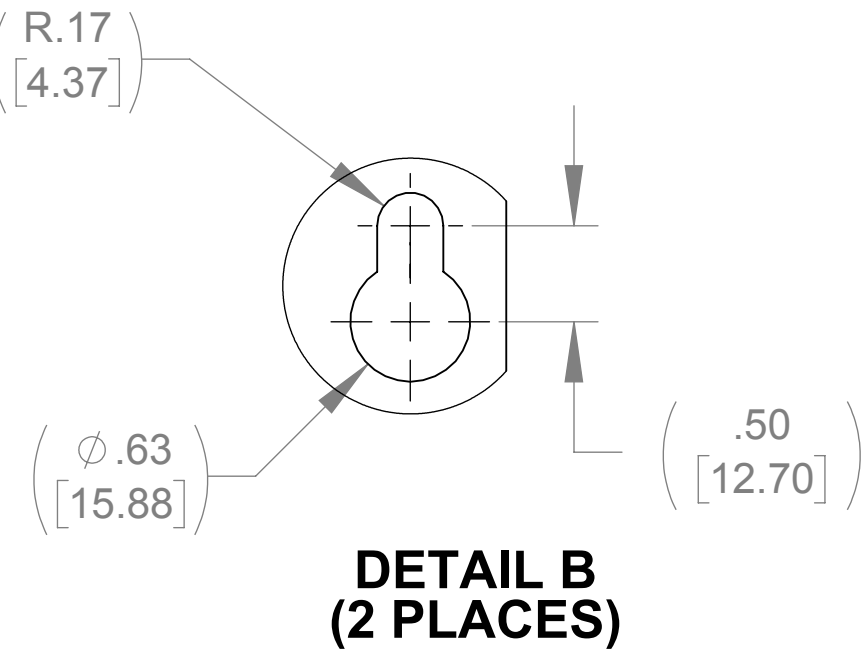
BOTTOM VIEW



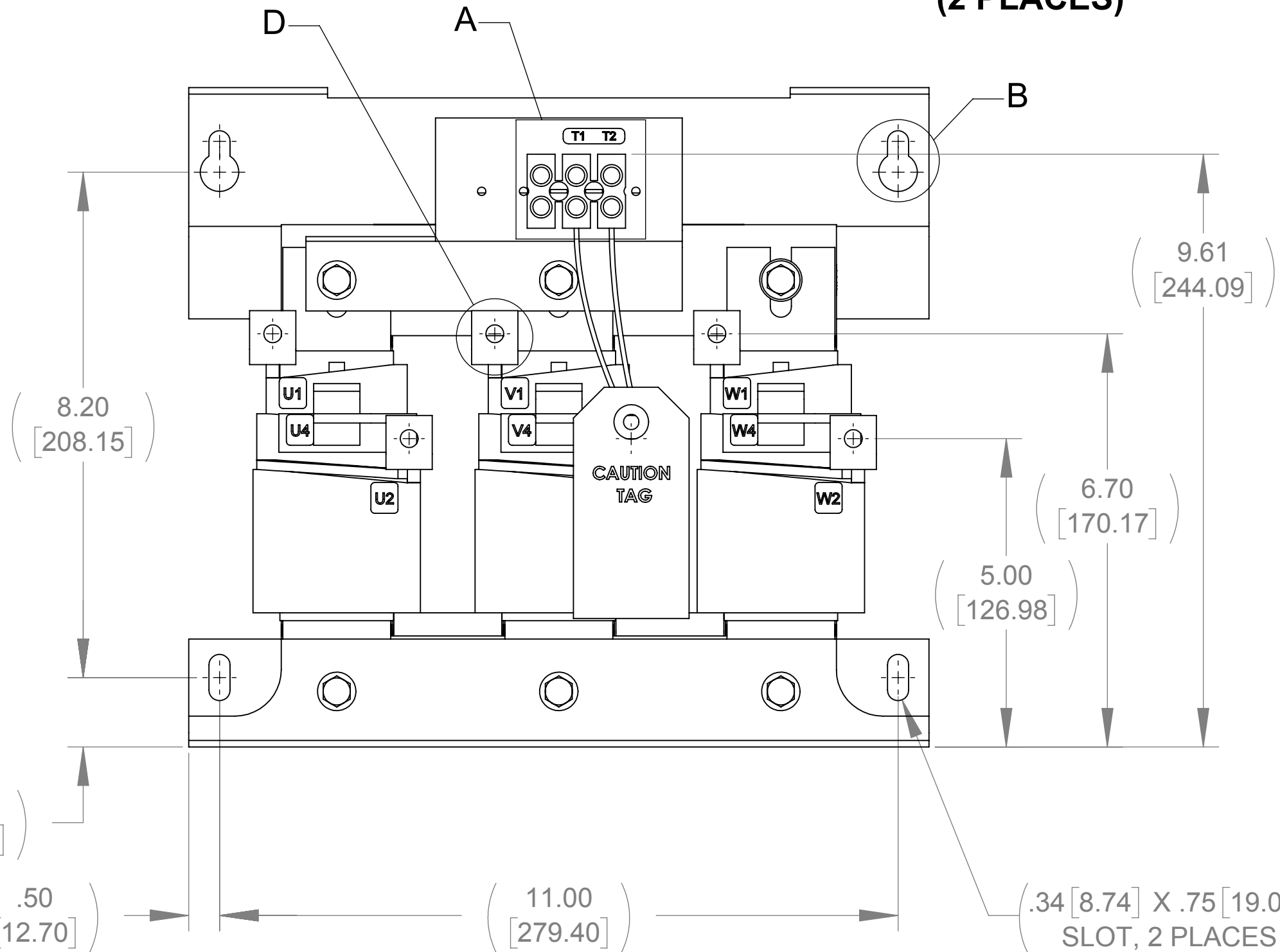
DETAIL C
(3 PLACES)



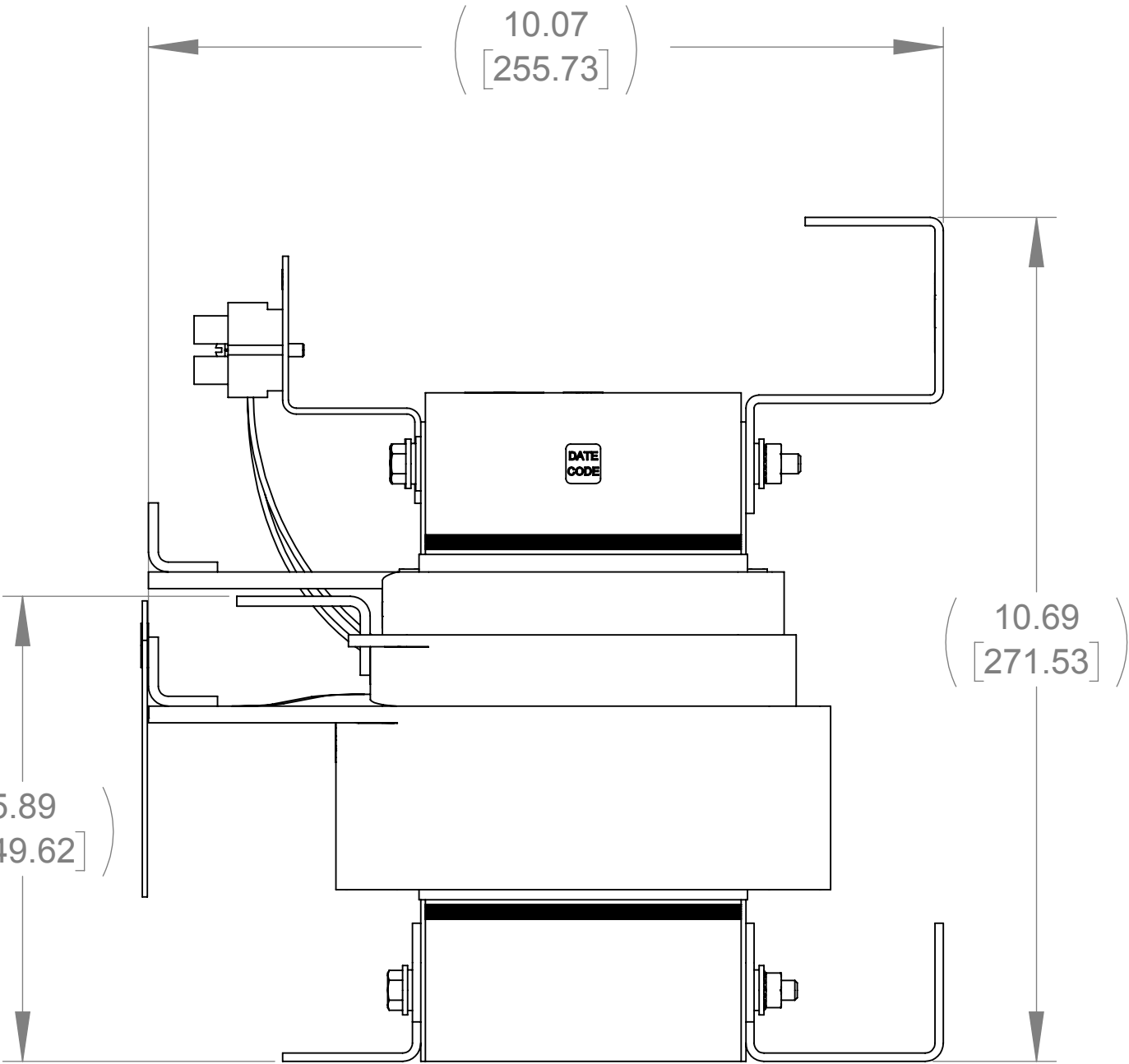
DETAIL A
CUSTOMER CONNECTION
DETAIL VIEW (THERMAL)



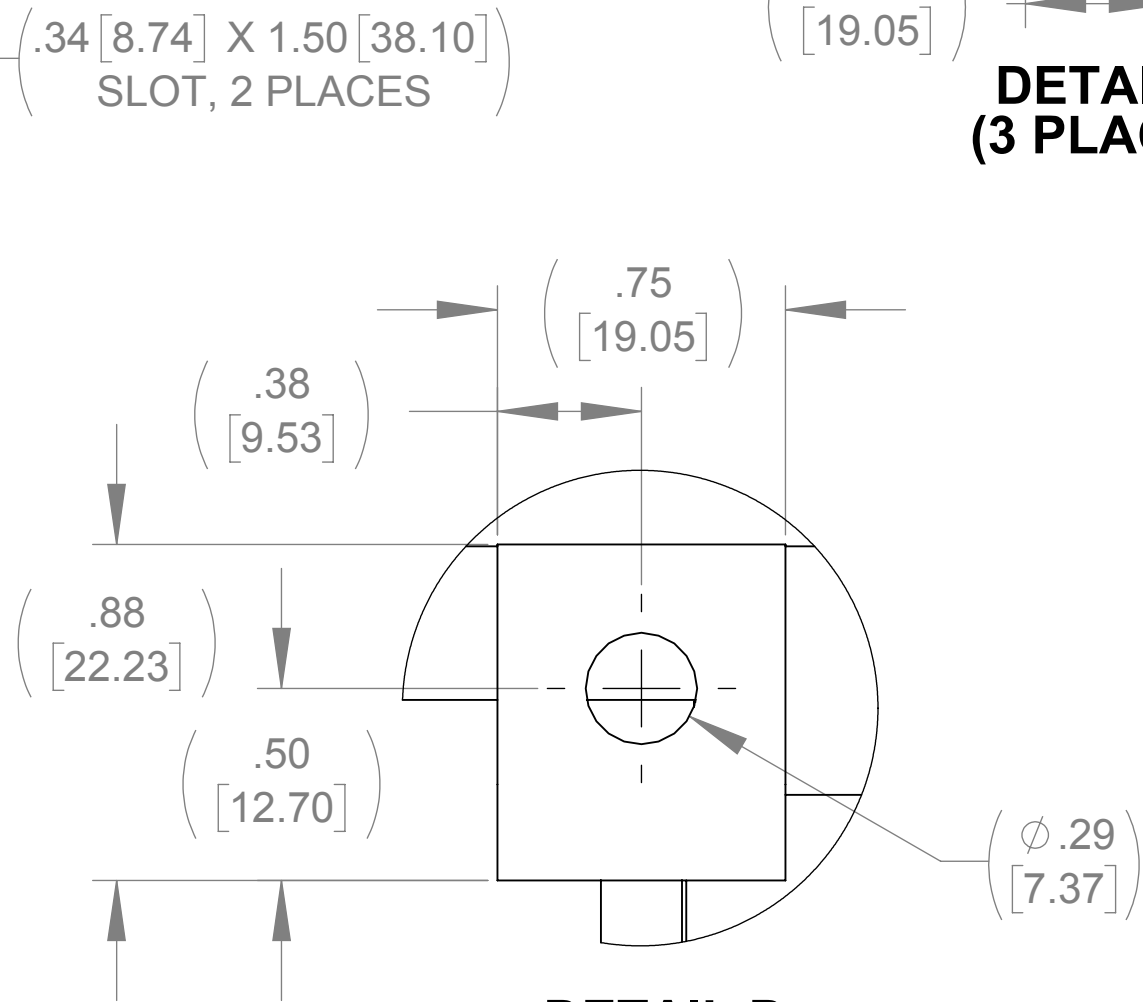
DETAIL B
(2 PLACES)



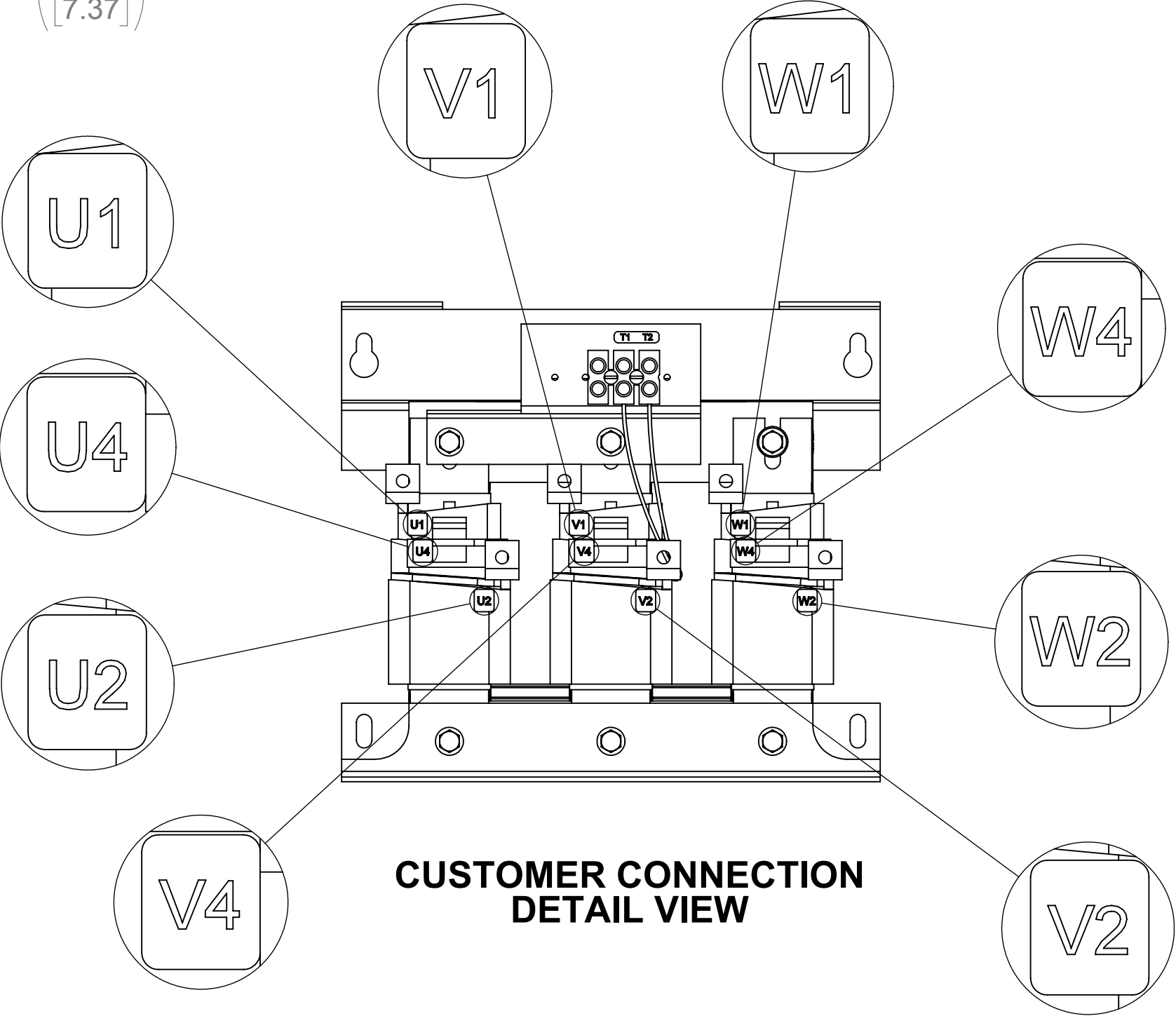
FRONT VIEW



RIGHT SIDE VIEW



DETAIL D
(6 PLACES)



CUSTOMER CONNECTION
DETAIL VIEW

NOTES:

1. TIGHTEN TERMINAL BLOCK SCREWS TO 16 IN/LBS. TORQUE.
2. TERMINAL WIRE SIZE: 4-14 AWG.
3. FILTER INCLUDES: CAP-530SW (QTY. 1).

THE COMPONENT, PART OR ASSEMBLY DESCRIBED IN THIS DOCUMENT MUST COMPLY WITH THE EU(EUROPEAN UNION) DIRECTIVE RoHS2		MATERIAL		CONFIDENTIAL AND PROPRIETARY INFORMATION THIS DOCUMENT CONTAINS CONFIDENTIAL AND PROPRIETARY INFORMATION OF MTE CORPORATION AND MAY NOT BE USED, COPIED OR DISCLOSED TO OTHERS EXCEPT WITH THE AUTHORIZED WRITTEN PERMISSION OF MTE CORPORATION		
CONTAINS <0.1% OF ANY SVHC BY WEIGHT PER REACH REGULATION				DESCRIPTION		
UNLESS OTHERWISE SPECIFIED DIMENSIONS ARE IN INCHES [MM] TOLERANCES ARE: ANGLES: ± 1 ° 1 PLACE .X: ± .1 [2.5] 2 PLACE .XX: ± .03 [0.76] 3 PLACE .XXX: ± .010 [0.254]		MTE POWER QUALITY. SOLVED. N83 W13330 Leon Road Menomonee Falls, WI 53051 USA 800.455-4683 262.253-8200		SWG 80A 600V 2-8kHz FILTER, OPEN PANEL		
		DRAWN MN 08/08/18		DATE 08/08/18		
		CHECKED MN 08/09/18		DATE 08/09/18		
		APPROVED TL 10/09/18		DATE 10/09/18		
		SIZE D		DWG No. CD SWGM0080E		REV 00
		SCALE 1:2		SHEET 1 OF 1		