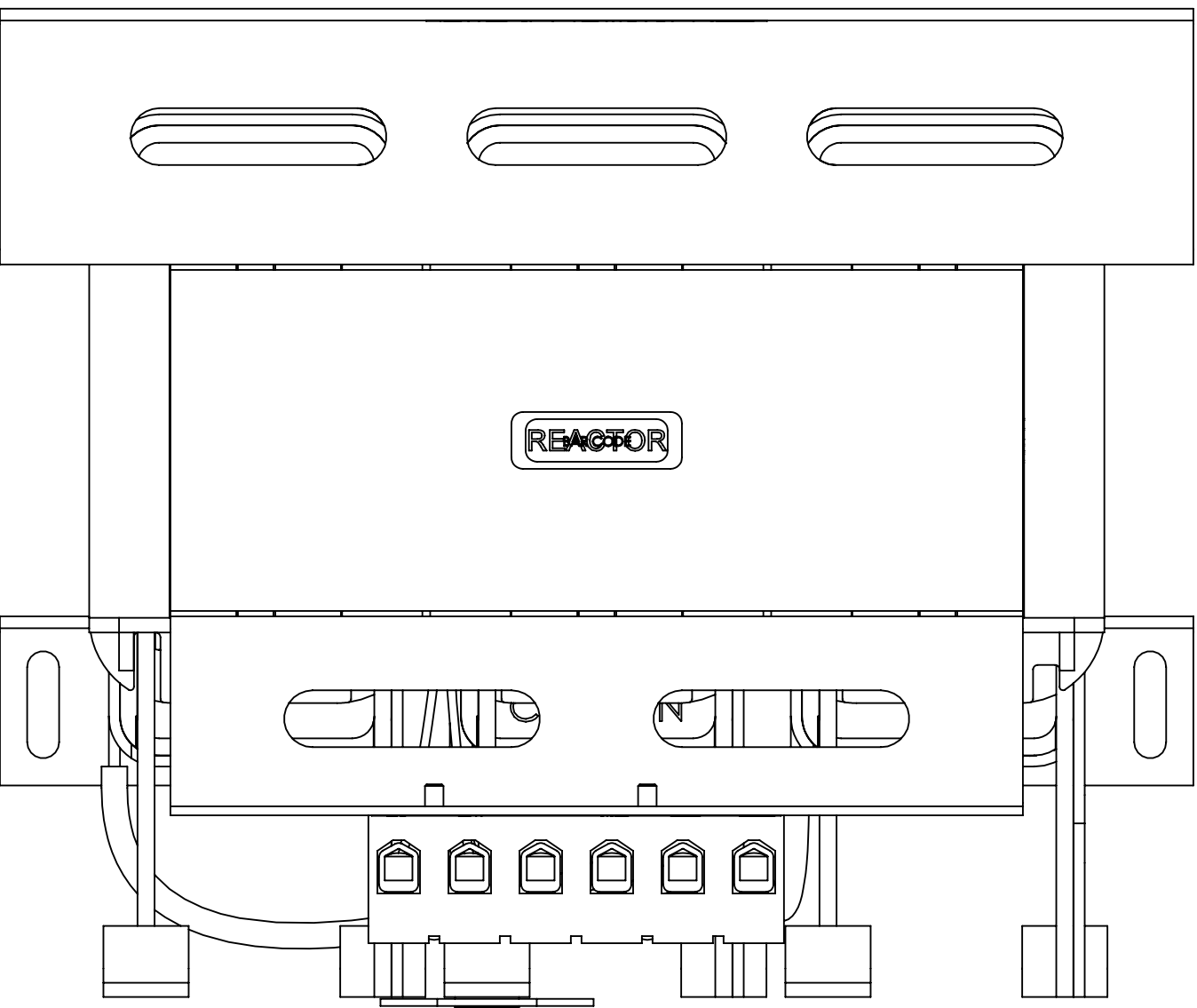
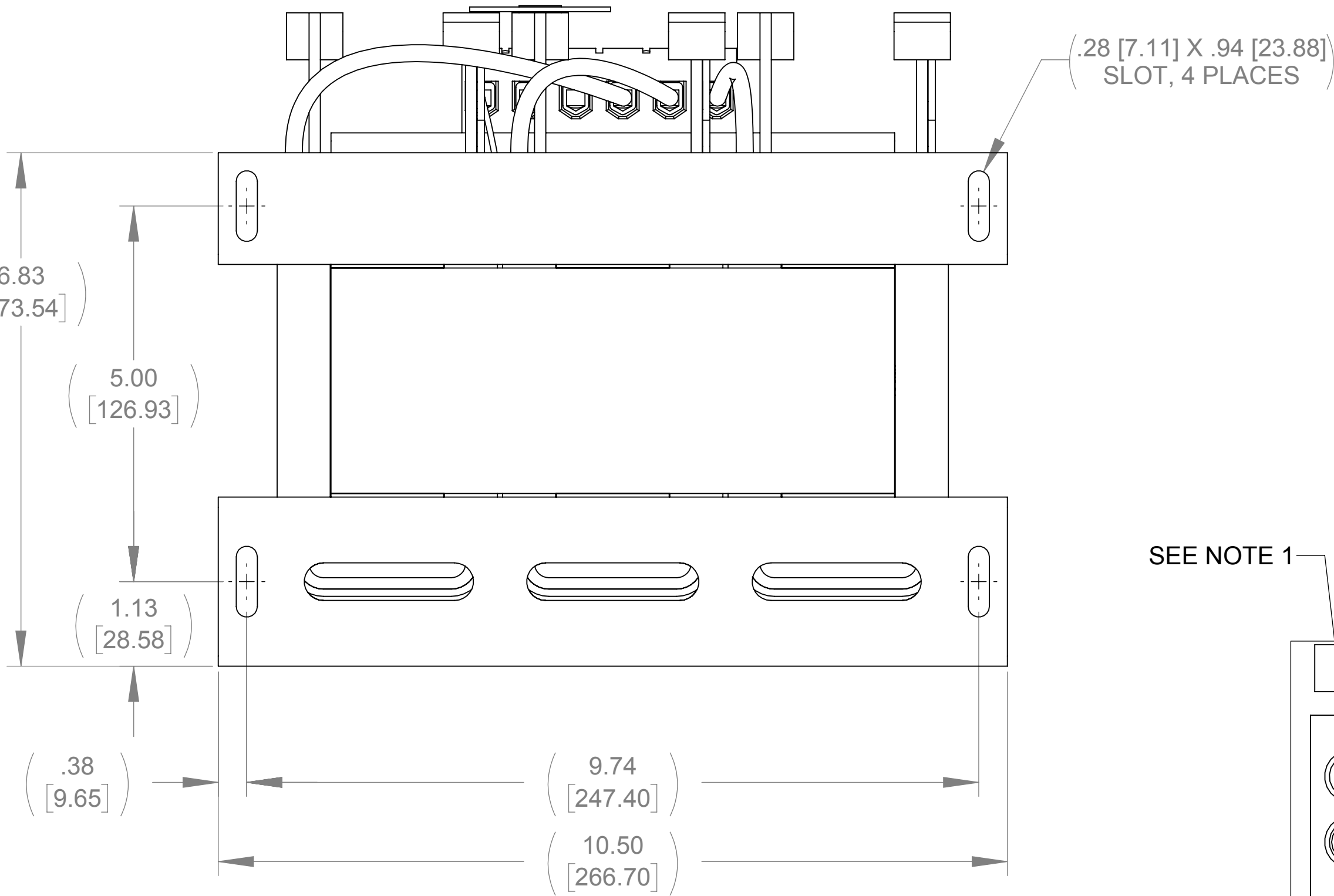


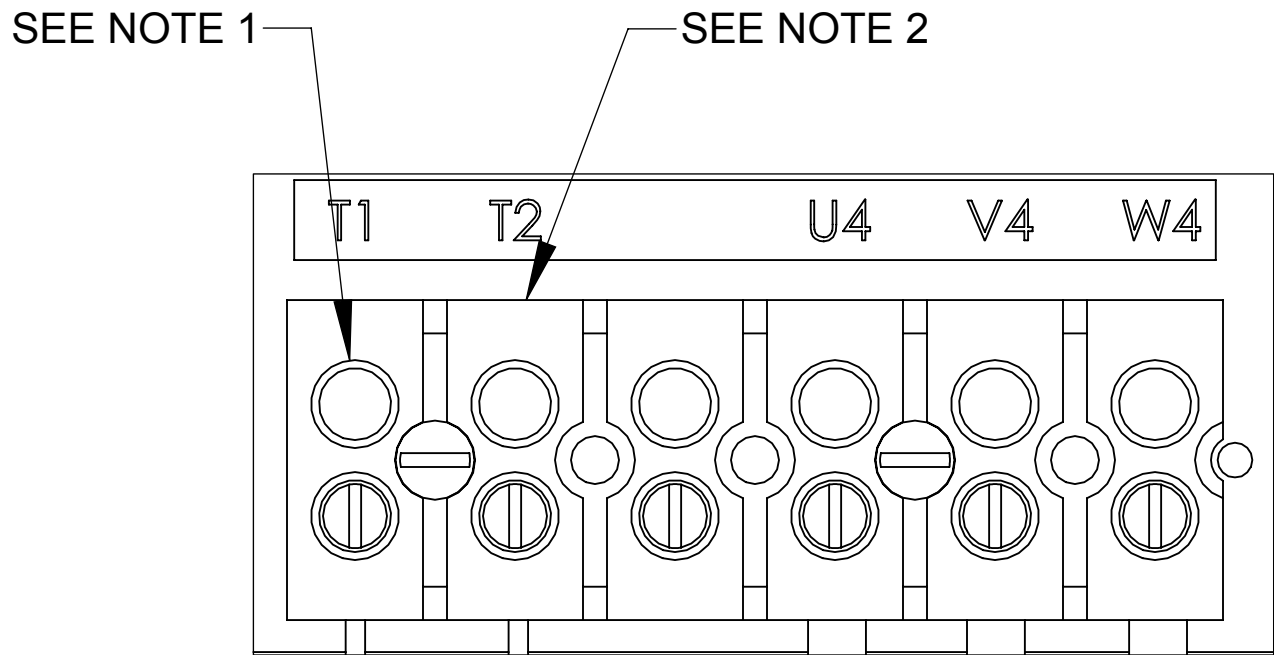
APPROX. WEIGHT  
(LBS)  
53



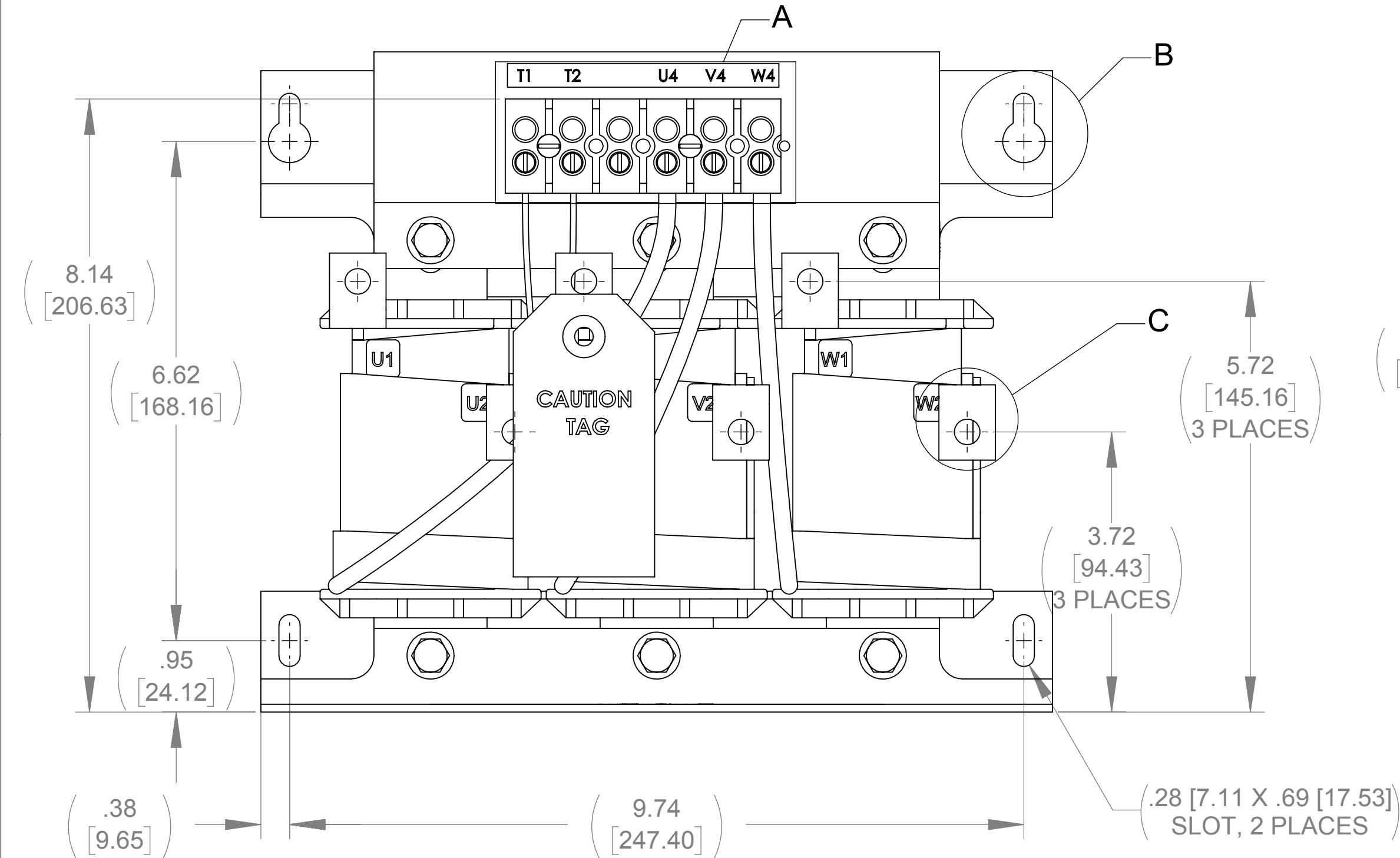
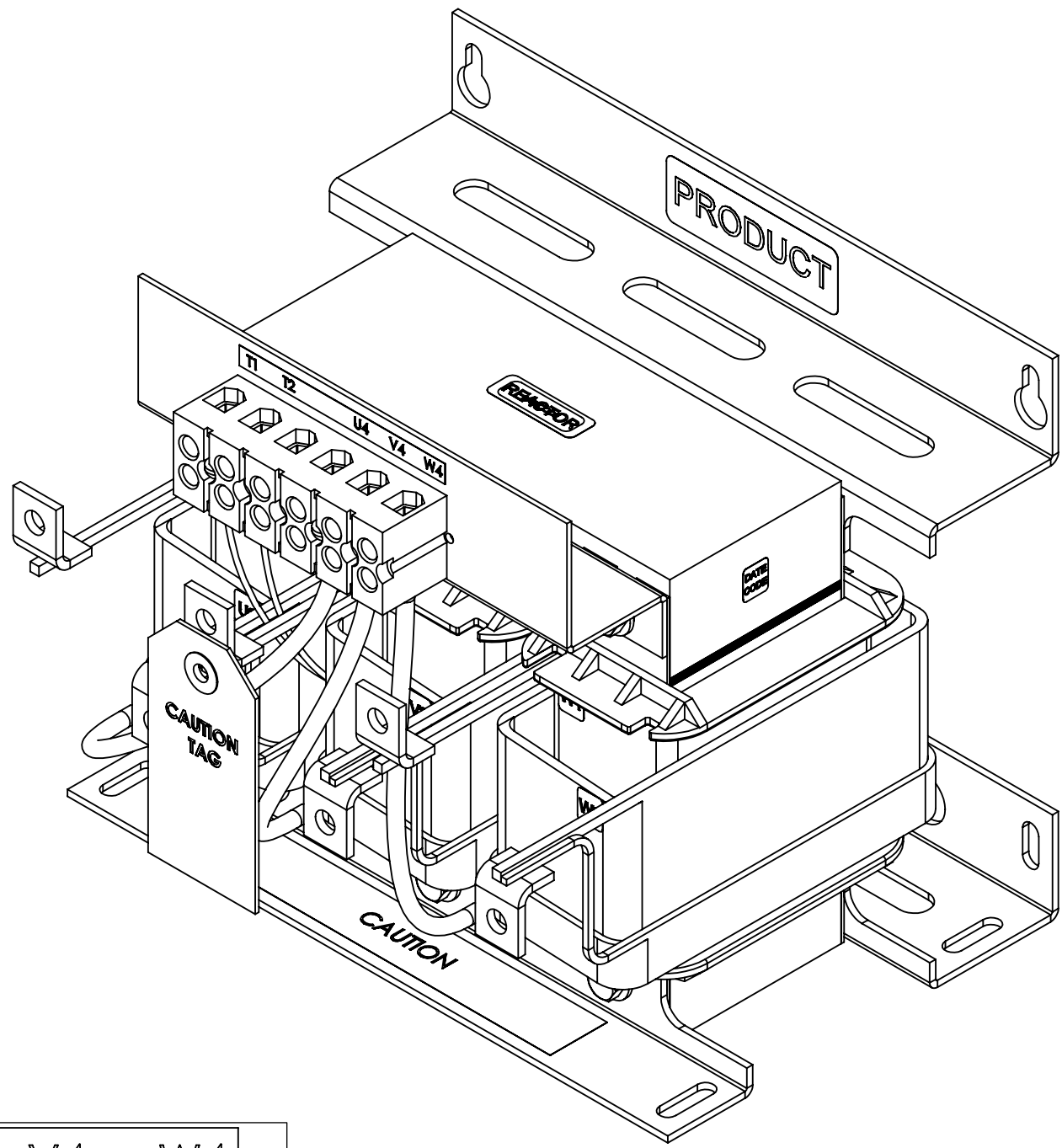
TOP VIEW



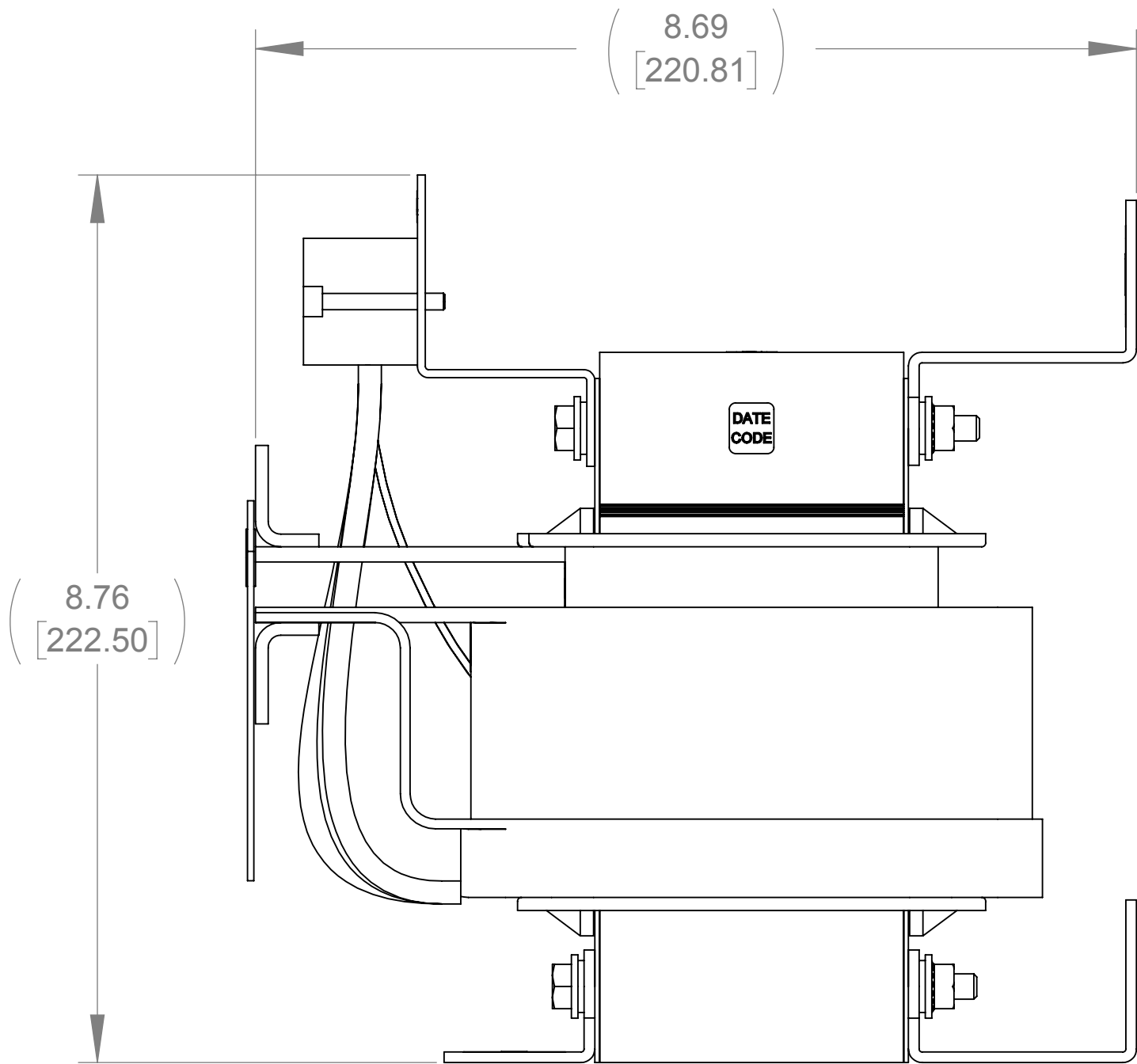
BOTTOM VIEW



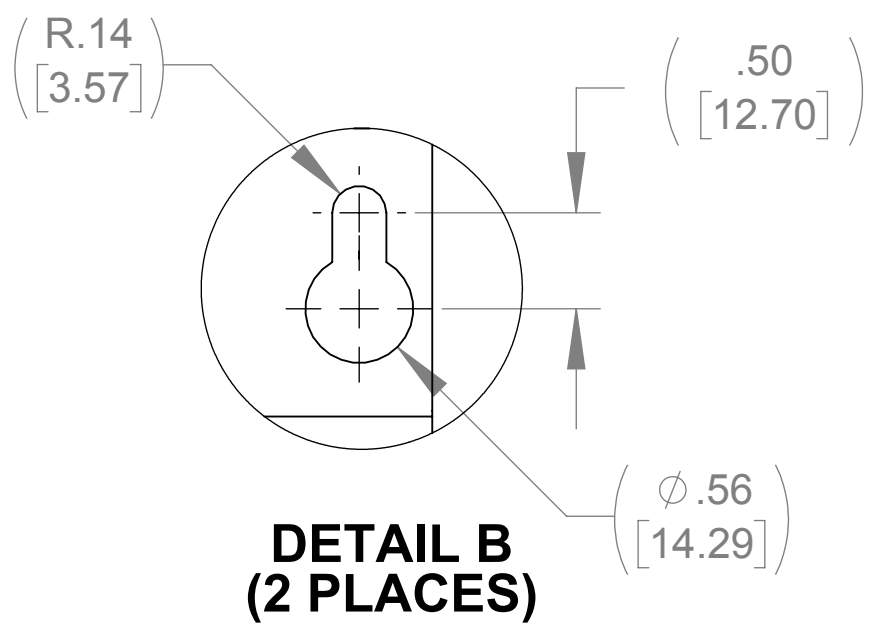
DETAIL A  
CUSTOMER CONNECTION  
DETAIL VIEW



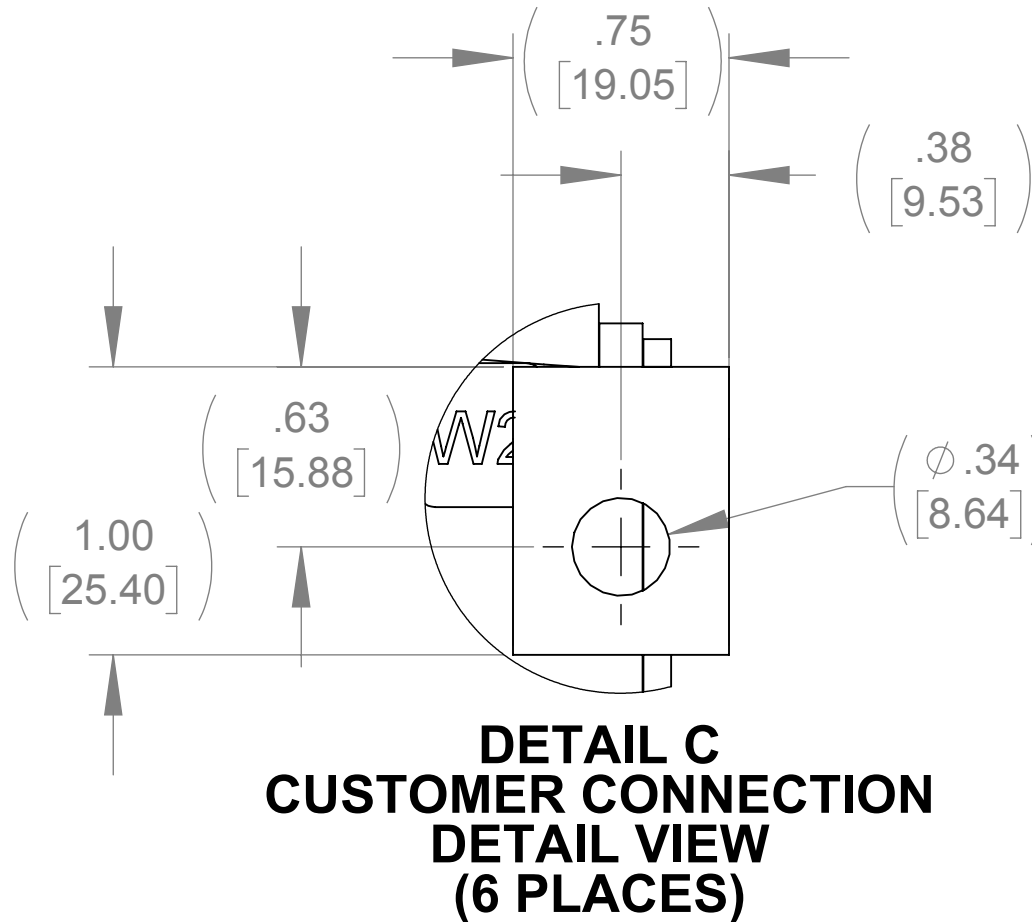
FRONT VIEW



SIDE VIEW



DETAIL B  
(2 PLACES)



DETAIL C  
CUSTOMER CONNECTION  
DETAIL VIEW  
(6 PLACES)

NOTES:

1. TIGHTEN TERMINAL BLOCK SCREWS TO 16 IN/LBS. TORQUE.
2. TERMINAL WIRE SIZE: 4-14 AWG.
3. FILTER INCLUDES: CAP-527SW (QTY. 1).

THE COMPONENT, PART OR ASSEMBLY DESCRIBED IN THIS DOCUMENT MUST COMPLY WITH THE EU(EUROPEAN UNION) DIRECTIVE RoHS2		MATERIAL		CONFIDENTIAL AND PROPRIETARY INFORMATION THIS DOCUMENT CONTAINS CONFIDENTIAL AND PROPRIETARY INFORMATION OF MTE CORPORATION AND MAY NOT BE USED, COPIED OR DISCLOSED TO OTHERS EXCEPT WITH THE AUTHORIZED WRITTEN PERMISSION OF MTE CORPORATION		
CONTAINS <0.1% OF ANY SVHC BY WEIGHT PER REACH REGULATION				DESCRIPTION		
UNLESS OTHERWISE SPECIFIED DIMENSIONS ARE IN INCHES [MM] TOLERANCES ARE:  ANGLES: ± 1 °  1 PLACE .X: ± .1 [2.5]  2 PLACE .XX: ± .03 [0.76]  3 PLACE .XXX: ± .010 [0.254]		<b>MTE</b> POWER QUALITY. SOLVED.  N83 W13330 Leon Road Menomonee Falls, WI 53051 USA 800.455-4683 262.253-8200		SWG 45A 600V 2-8kHz FILTER, OPEN PANEL		
DRAWN MN		DATE 08/07/18		SIZE D		
CHECKED MN		DATE 08/07/18		DWG No. CD SWGM0045E		
APPROVED TL		DATE 10/09/18		REV 00		
SCALE 2:3				SHEET 1 OF 1		