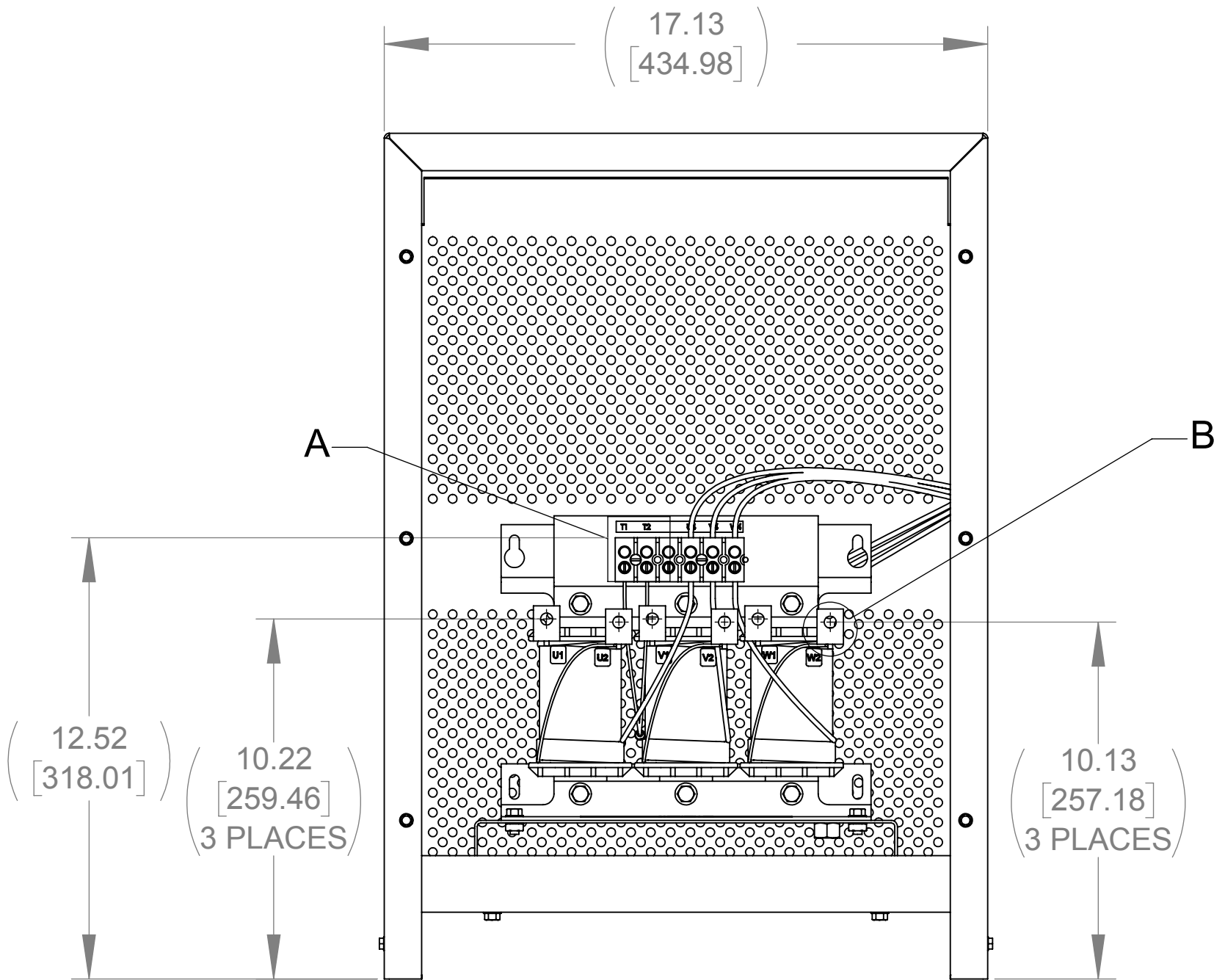
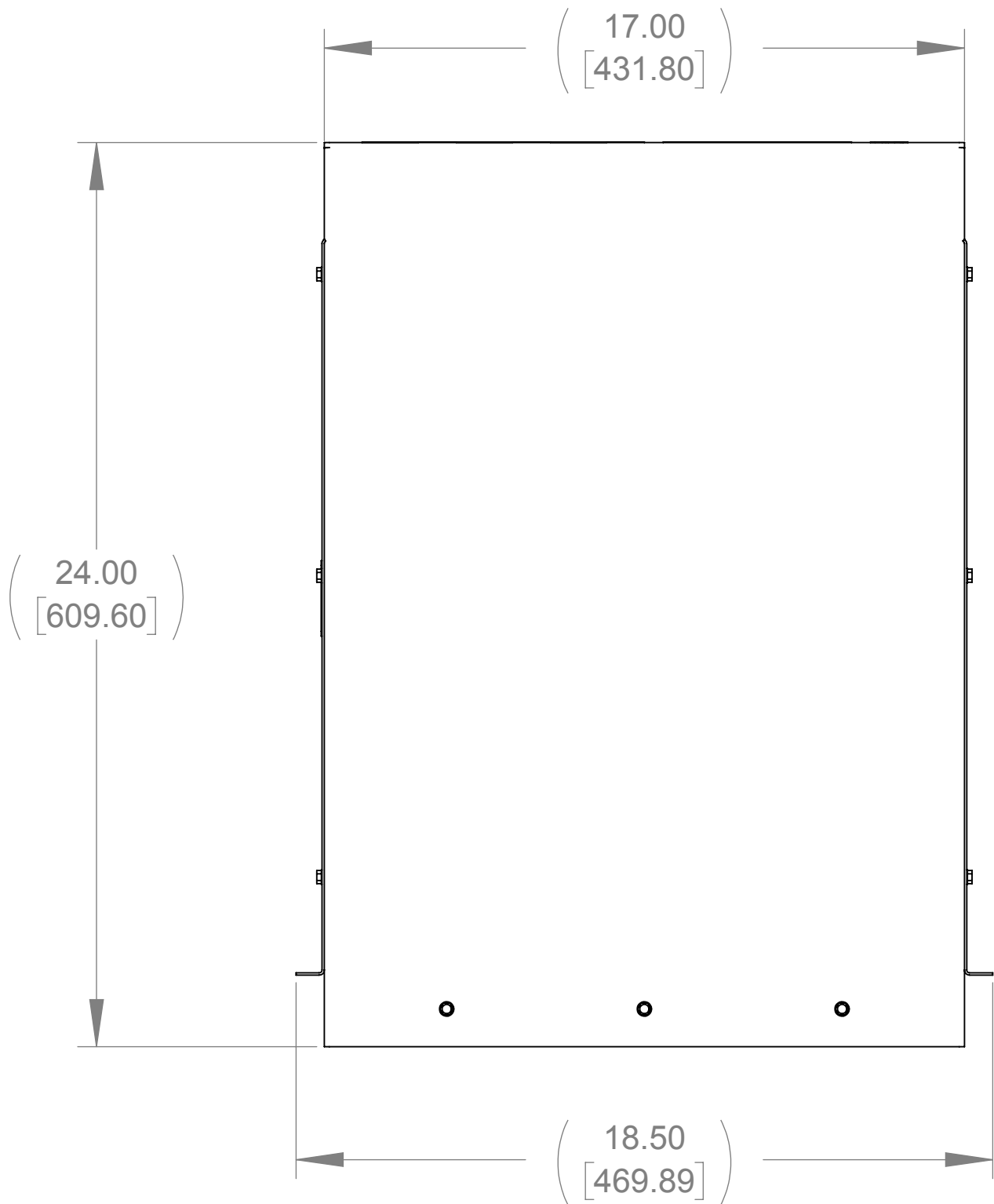


APPROX. WEIGHT
(LBS)
88

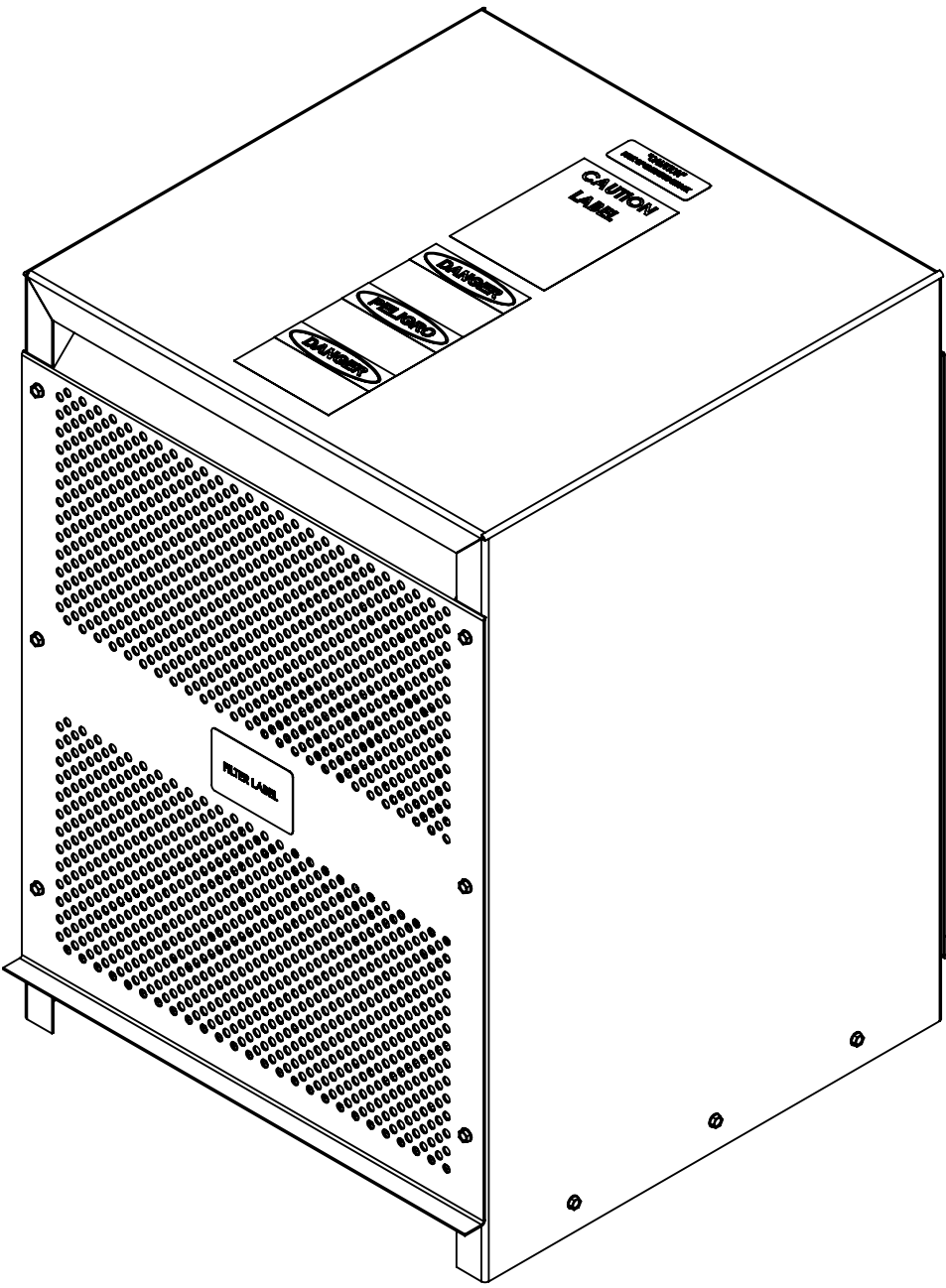
| ECO No | DESCRIPTION | REV BY | DATE |
|--------|-------------|--------|------|
| | | | |



FRONT VIEW
(PANELS REMOVED)

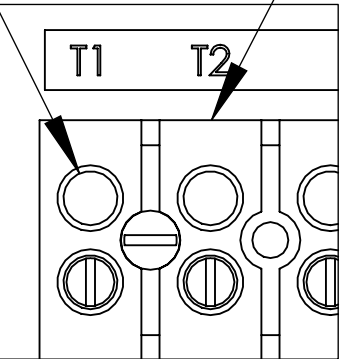


SIDE VIEW

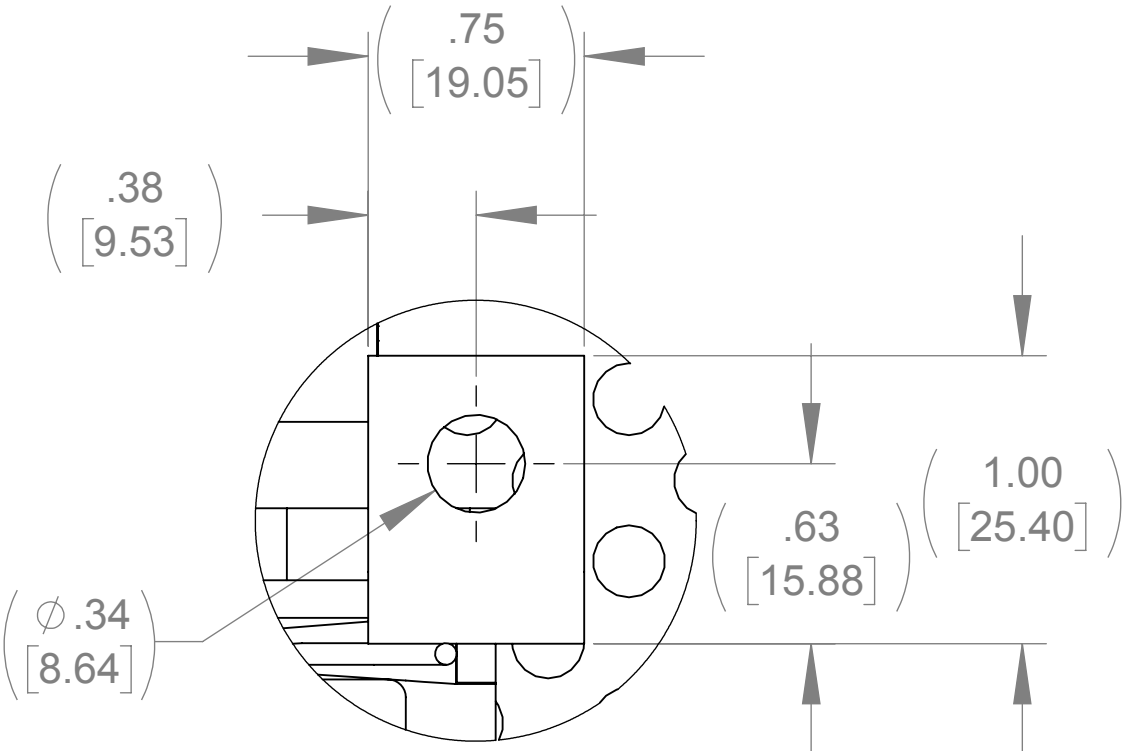


SEE NOTE 1

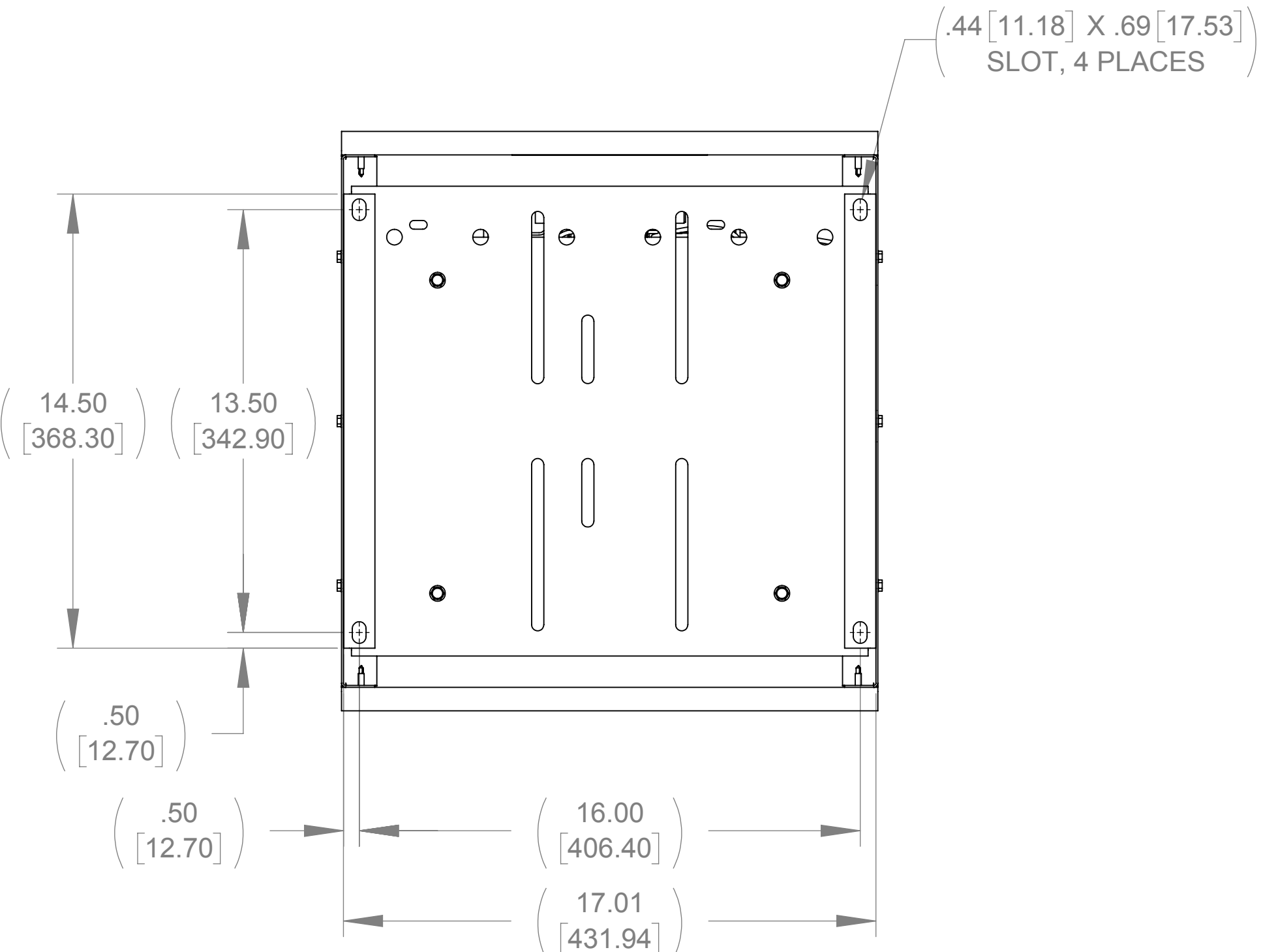
SEE NOTE 2



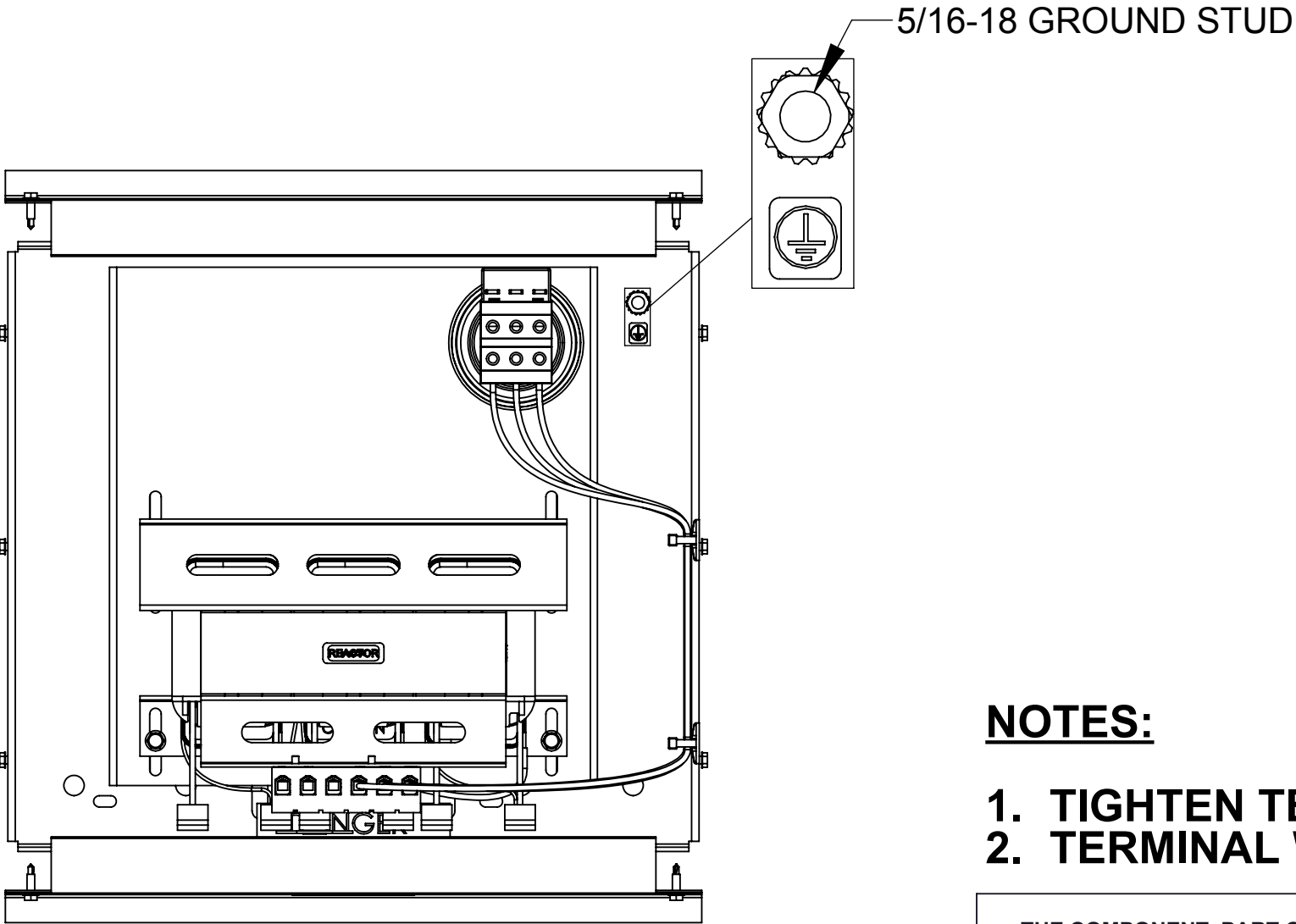
DETAIL A
CUSTOMER CONNECTION
DETAIL VIEW (THERMAL)



DETAIL B
CUSTOMER CONNECTION
DETAIL VIEW
(6 PLACES)




BOTTOM VIEW



TOP VIEW
(PANELS REMOVED)

NOTES:

1. TIGHTEN TERMINAL BLOCK SCREWS TO 16 IN/LBS. TORQUE.
2. TERMINAL WIRE SIZE: 4-14 AWG.

| | | | | | | |
|--|--|--|------------------|--|-------------------------|-----------|
| THE COMPONENT, PART OR ASSEMBLY DESCRIBED IN THIS DOCUMENT MUST COMPLY WITH THE EU(EUROPEAN UNION) DIRECTIVE RoHS2 | | MATERIAL | | CONFIDENTIAL AND PROPRIETARY INFORMATION THIS DOCUMENT CONTAINS CONFIDENTIAL AND PROPRIETARY INFORMATION OF MTE CORPORATION AND MAY NOT BE USED, COPIED OR DISCLOSED TO OTHERS EXCEPT WITH THE AUTHORIZED WRITTEN PERMISSION OF MTE CORPORATION | | |
| CONTAINS <0.1% OF ANY SVHC BY WEIGHT PER REACH REGULATION | | | | DESCRIPTION | | |
| UNLESS OTHERWISE SPECIFIED DIMENSIONS ARE IN INCHES [MM] TOLERANCES ARE: ANGLES: ± 1 ° 1 PLACE .X: ± .1 [2.5] 2 PLACE .XX: ± .03 [0.76] 3 PLACE .XXX: ± .010 [0.254] | |  N83 W13330 Leon Road Menomonee Falls, WI 53051 USA 800.455-4683 262.253.8200 | | SWG 27A 600V 2-8kHz FILTER, NEMA 1/2 ENCL. | | |
| | | DRAWN MN | DATE 07/26/18 | | | |
| | | CHECKED MN | DATE 07/26/18 | | | |
| | | APPROVED TL | DATE 10/09/18 | SIZE D | DWG No. CD SWGG0027E | REV 00 |
| | | | | SCALE 1:4 | SHEET 1 OF 1 | |