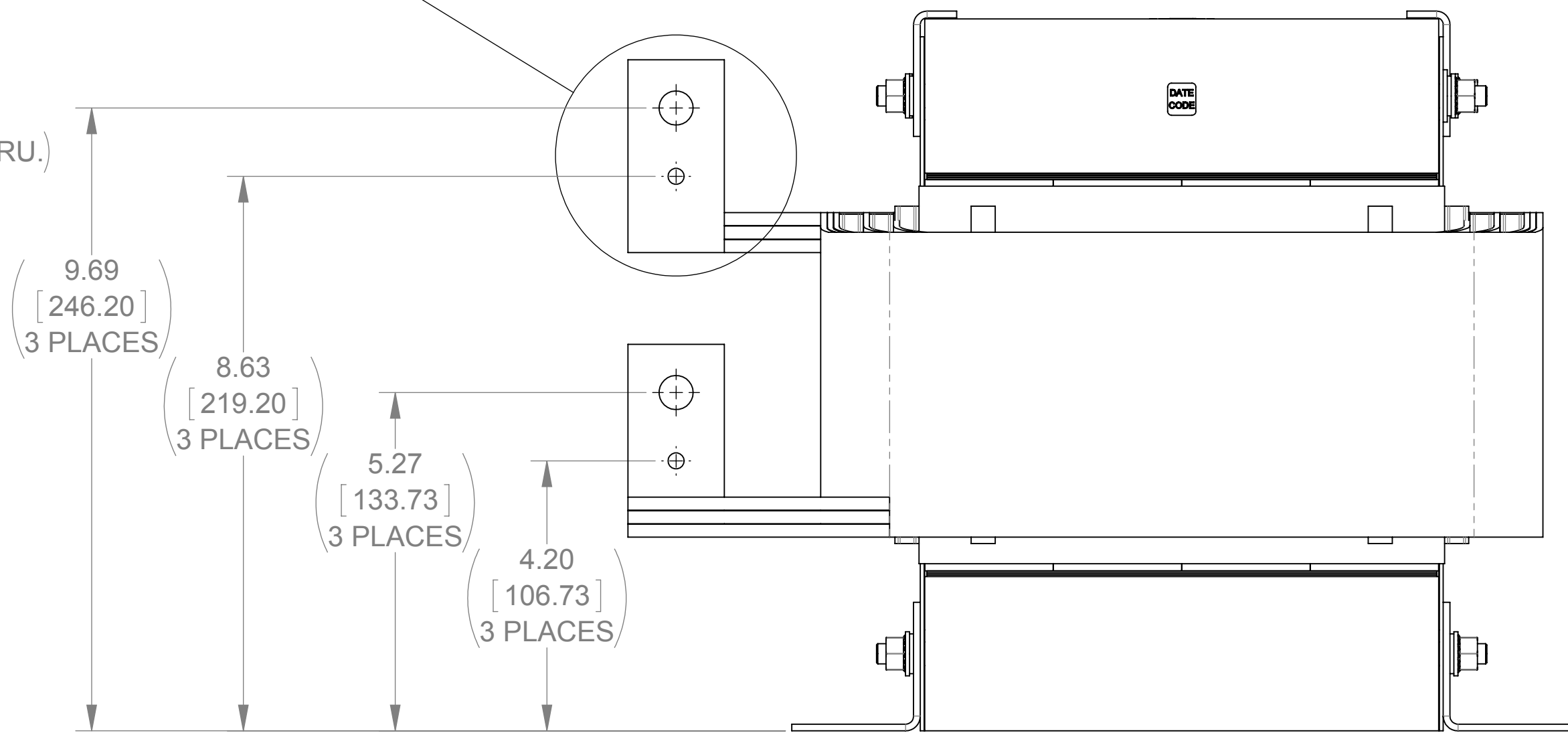
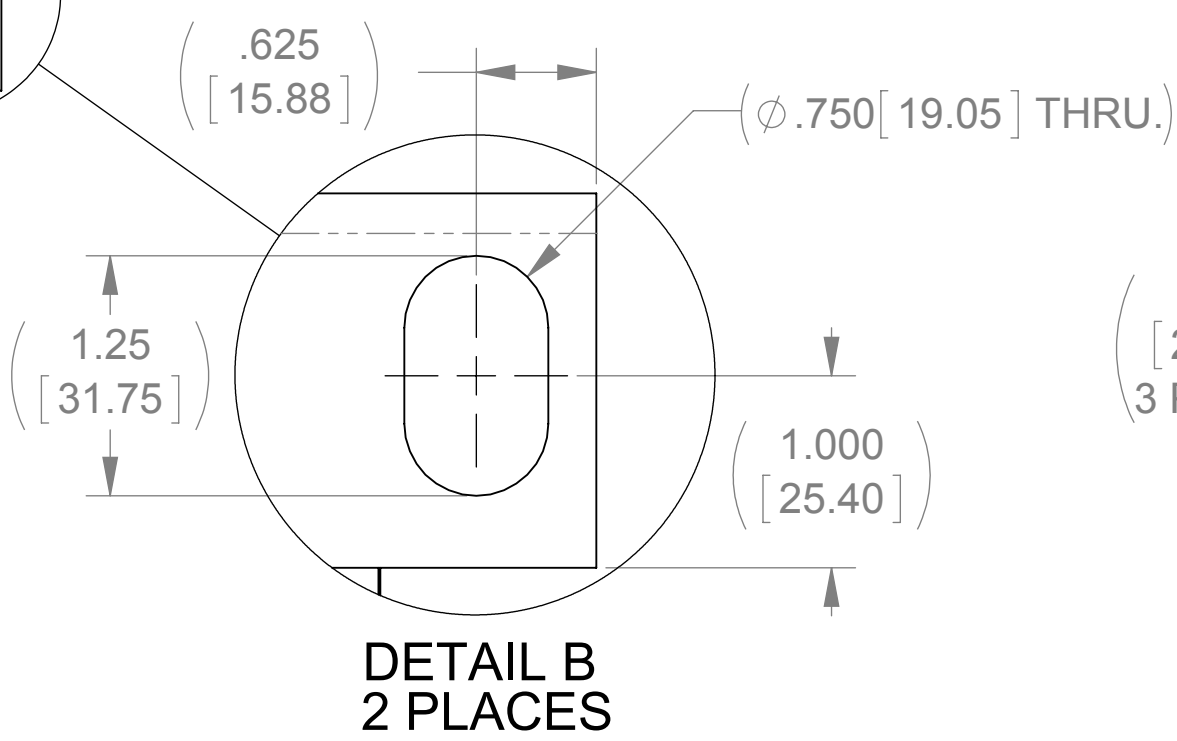
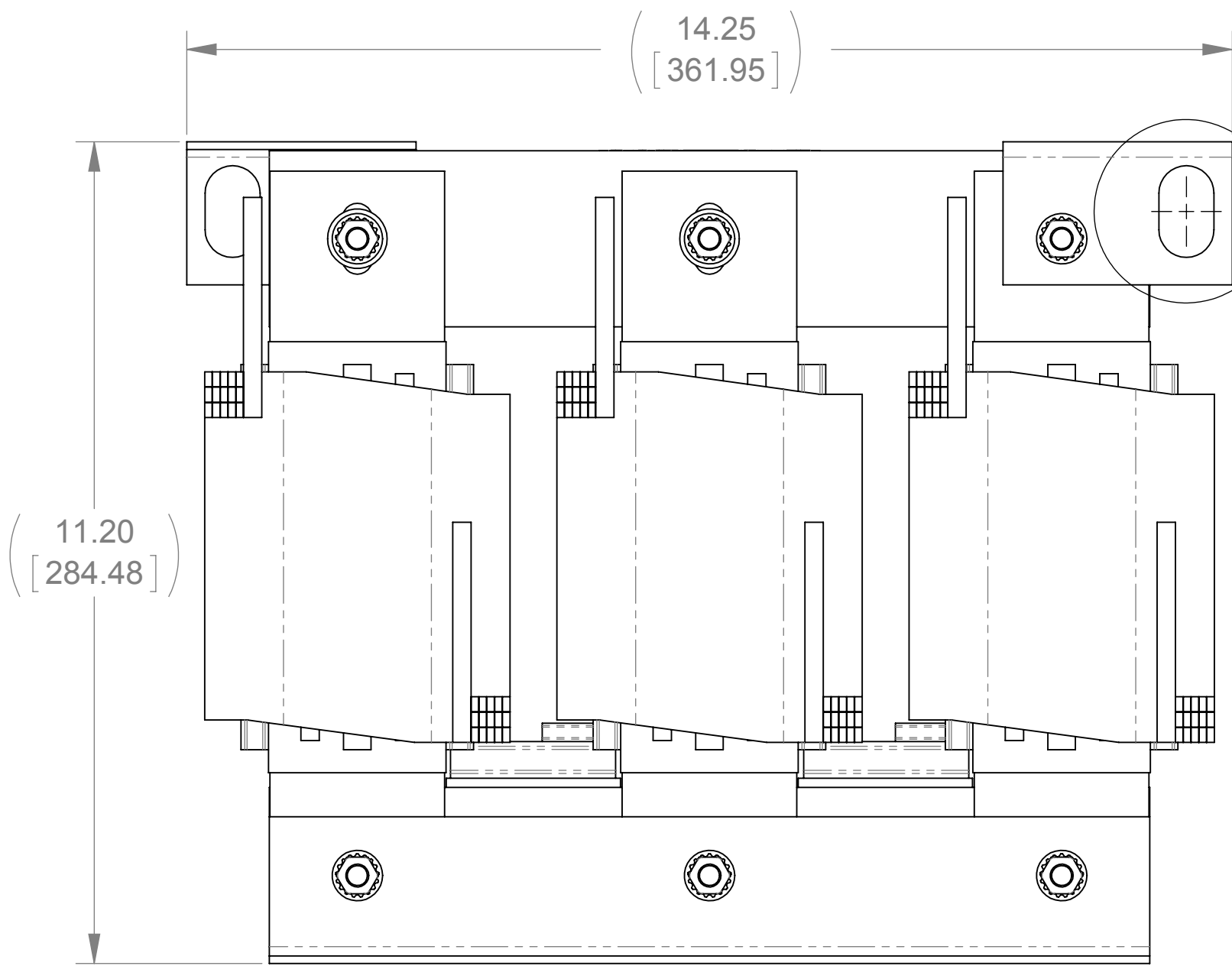
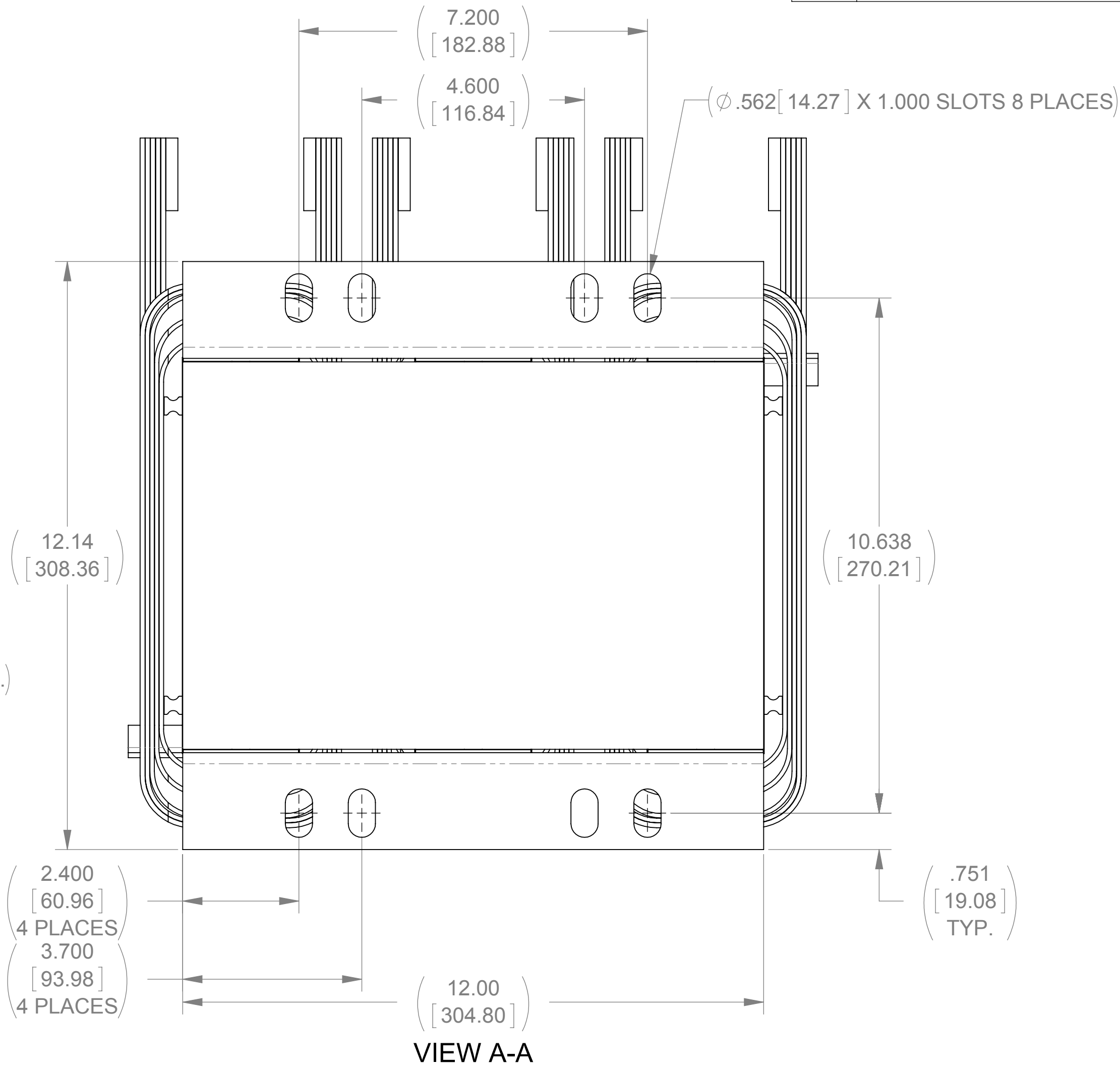
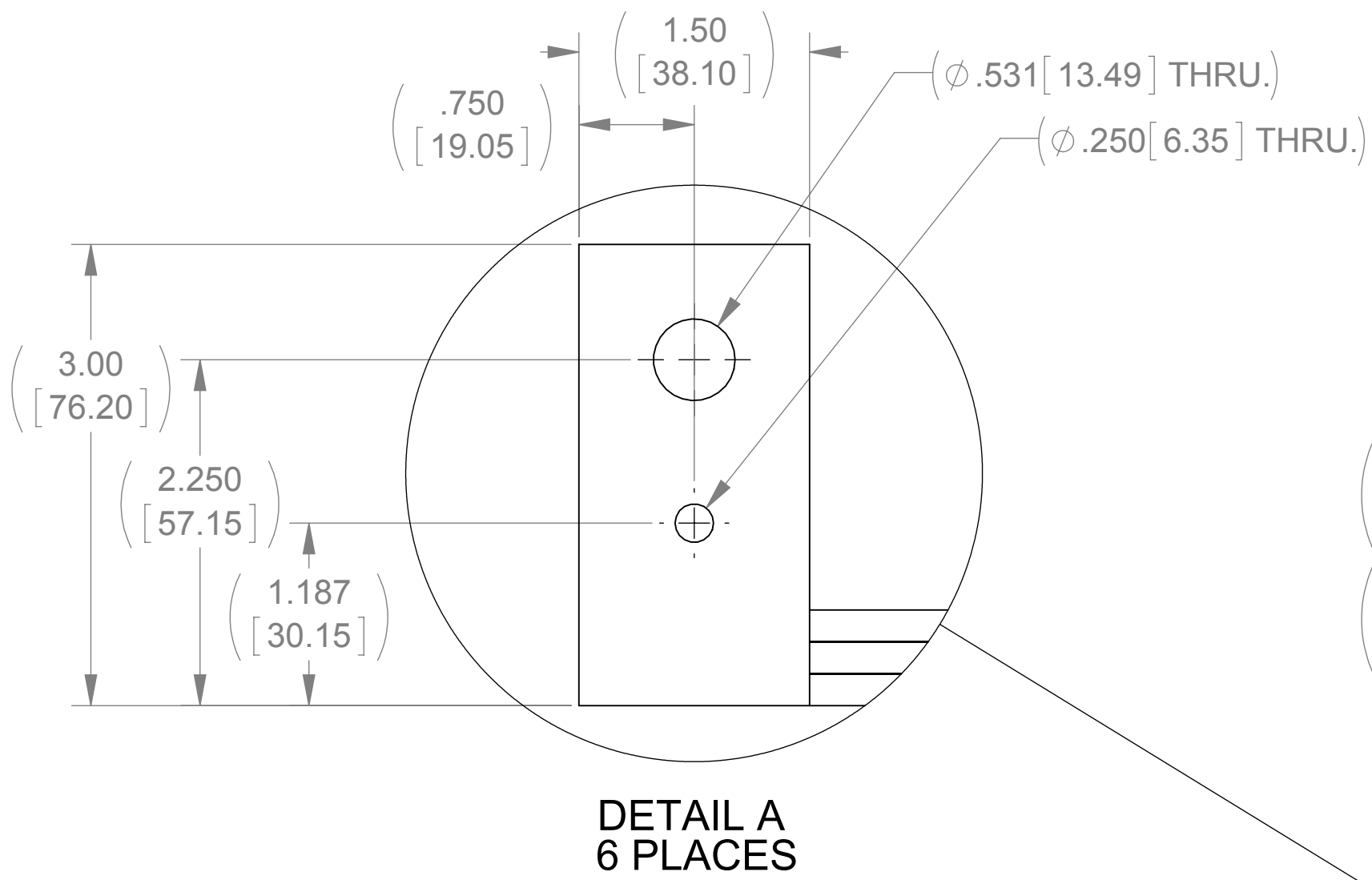
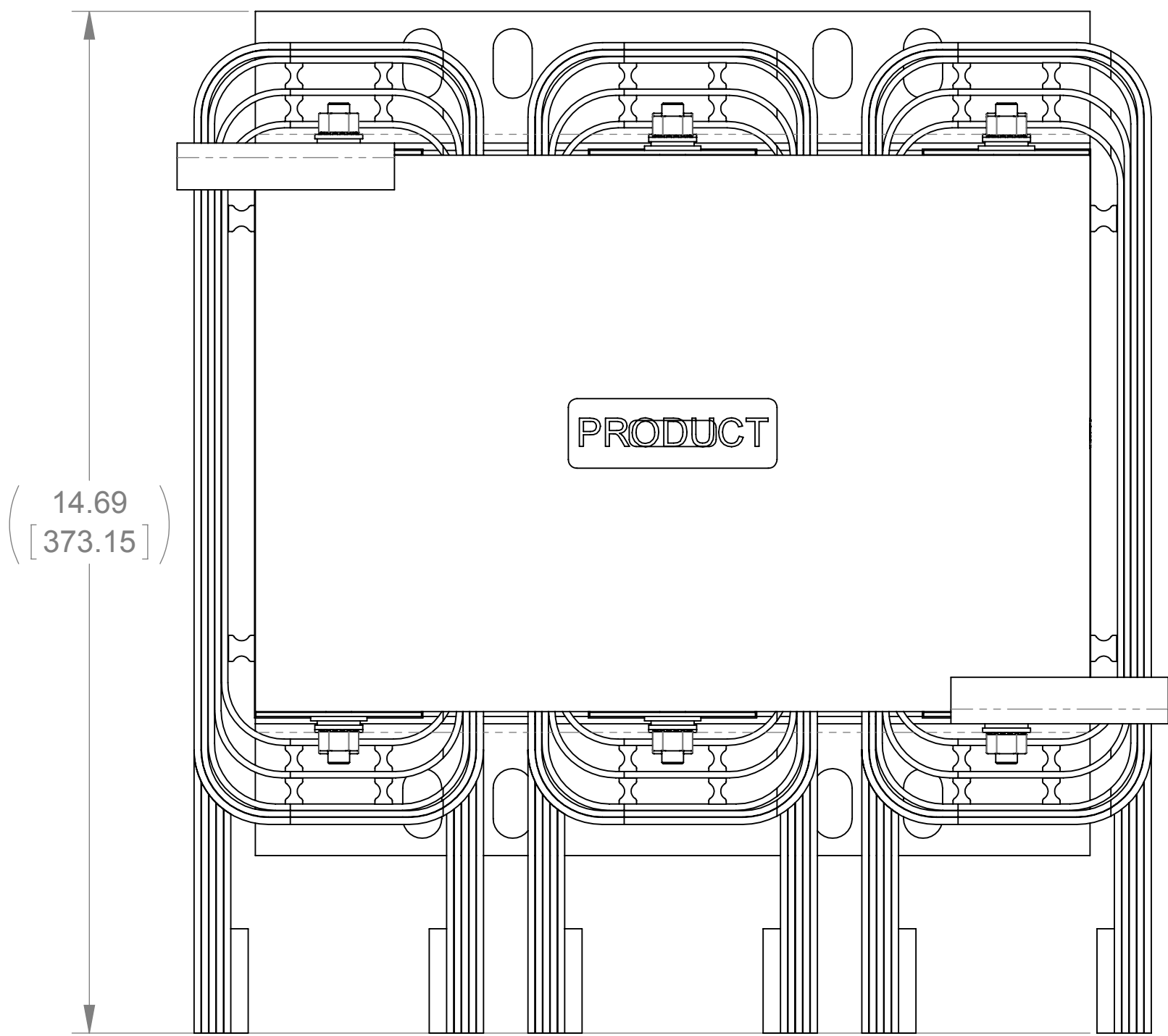



WEIGHT (LBS)	INDUCTANCE	LOSS (WATTS)
292	0.120mH	1190

ECO No	DESCRIPTION	REV BY	DATE
M8280	REDRAW IN SOLIDWORKS	JP	11/28/12



THE COMPONENT, PART OR ASSEMBLY DESCRIBED IN THIS DOCUMENT MUST COMPLY WITH THE EU(EUROPEAN UNION) DIRECTIVE RoHS		MATERIAL		CONFIDENTIAL AND PROPRIETARY INFORMATION THIS DOCUMENT CONTAINS CONFIDENTIAL AND PROPRIETARY INFORMATION OF MTE CORPORATION AND MAY NOT BE USED, COPIED OR DISCLOSED TO OTHERS EXCEPT WITH THE AUTHORIZED WRITTEN PERMISSION OF MTE CORPORATION			
CONTAINS <0.1% OF ANY SVHC BY WEIGHT PER REACH REGULATION				DESCRIPTION			
<div>UNLESS OTHERWISE SPECIFIED DIMENSIONS ARE IN INCHES [MM] TOLERANCES ARE: ANGLES: ± 1 ° 1 PLACE .X: ± .1 [2.5] 2 PLACE .XX: ± .03 [0.76] 3 PLACE .XXX: ± .010 [0.254]</div> <div><p>N83 W13330 Leon Road Menomonee Falls, WI 53051 USA 800.455.4683 262.253.8200</p></div>				3 PHASE REACTOR			
		DRAWN	DATE	SIZE D	DWG No CD RLW-060007	REV 01	
		GX	03/25/10				
		CHECKED	DATE				
		TM	12/05/12				
		APPROVED	DATE				
		TM	12/05/12	SCALE 1:2	SHEET 1 OF 1		