

D

C

B

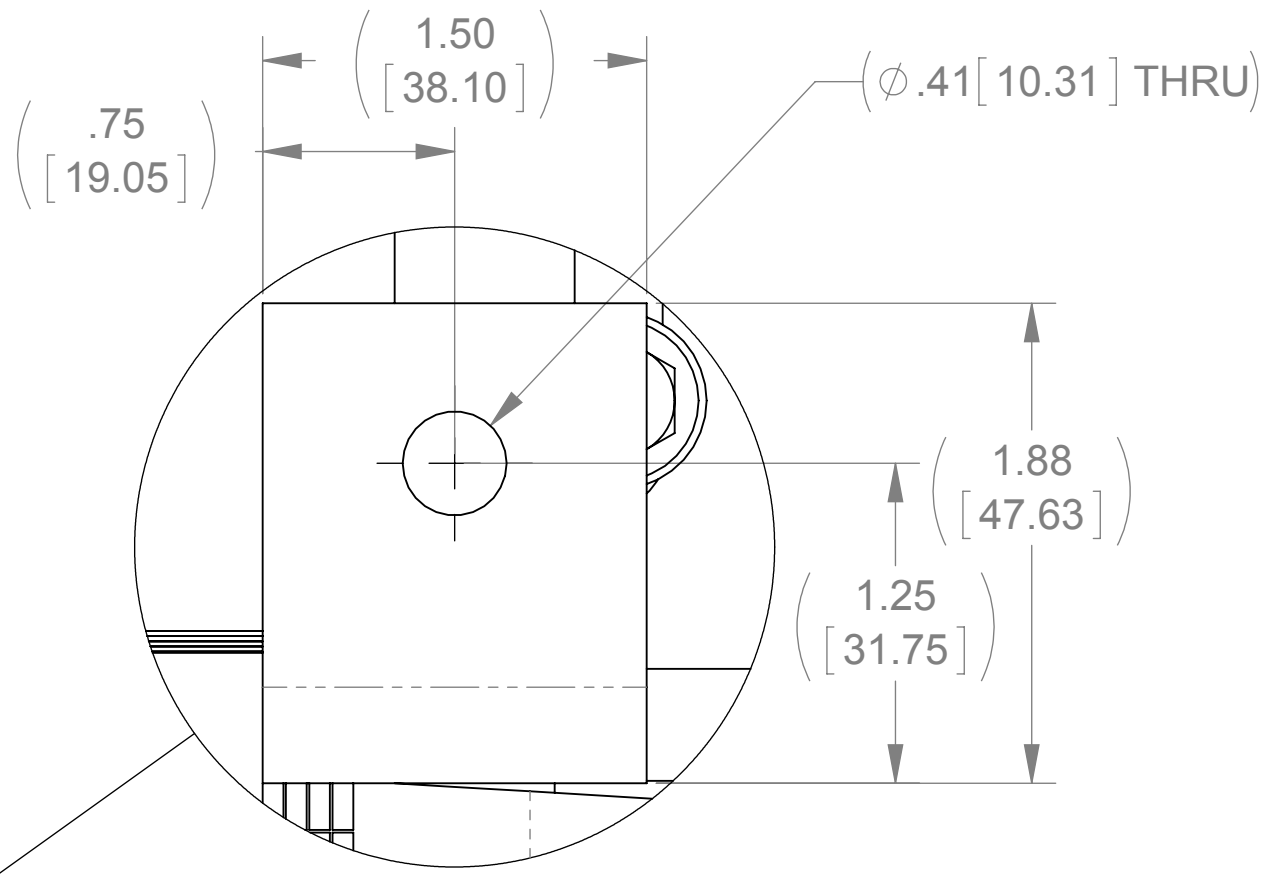
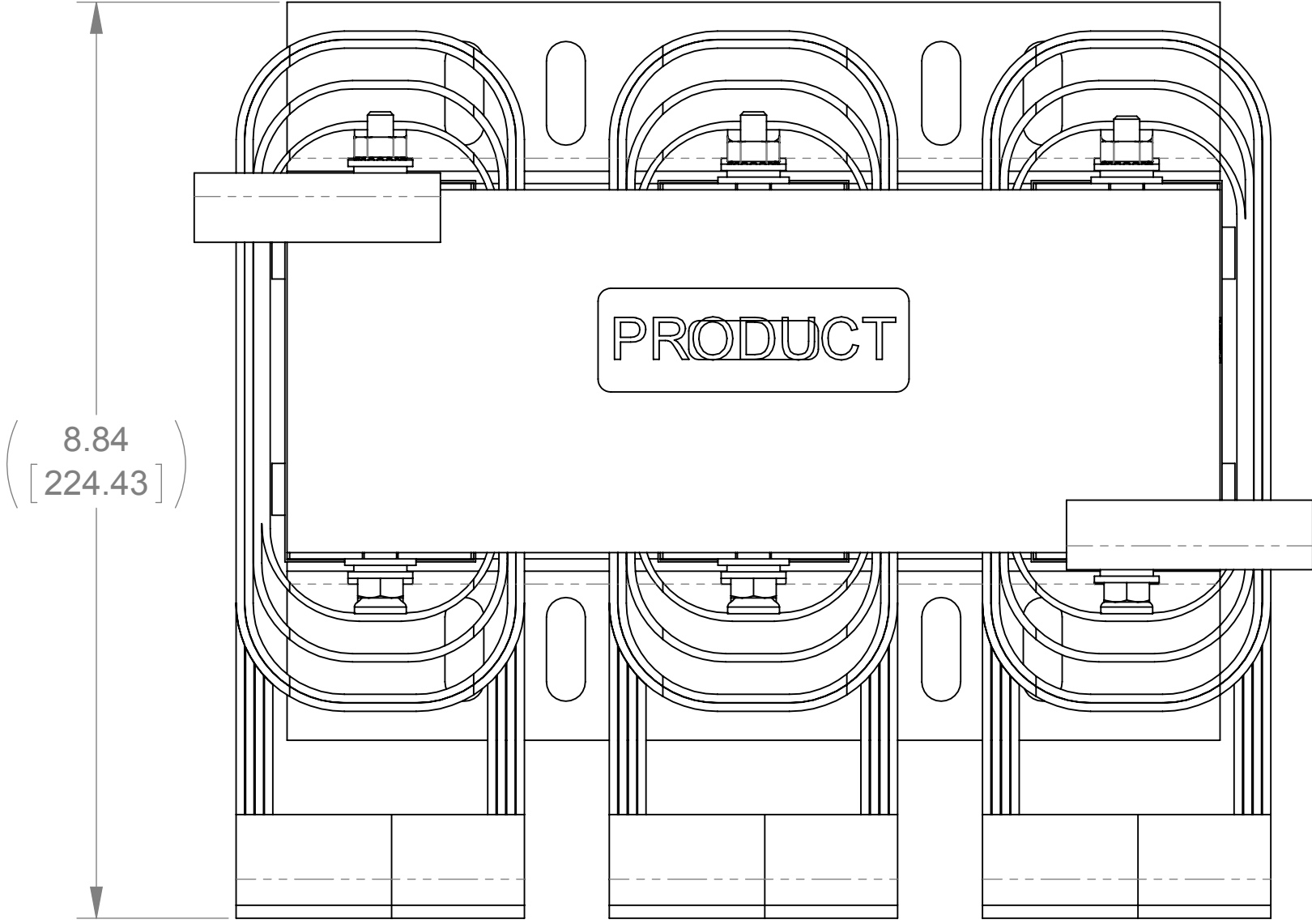
A

D

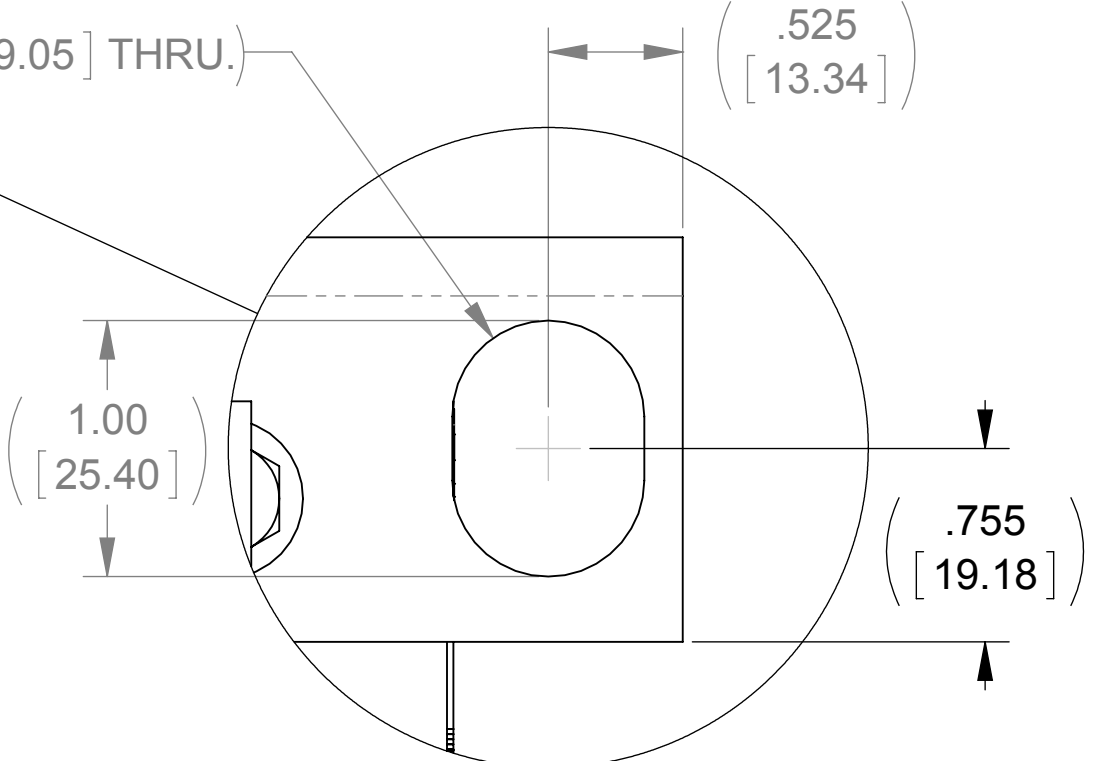
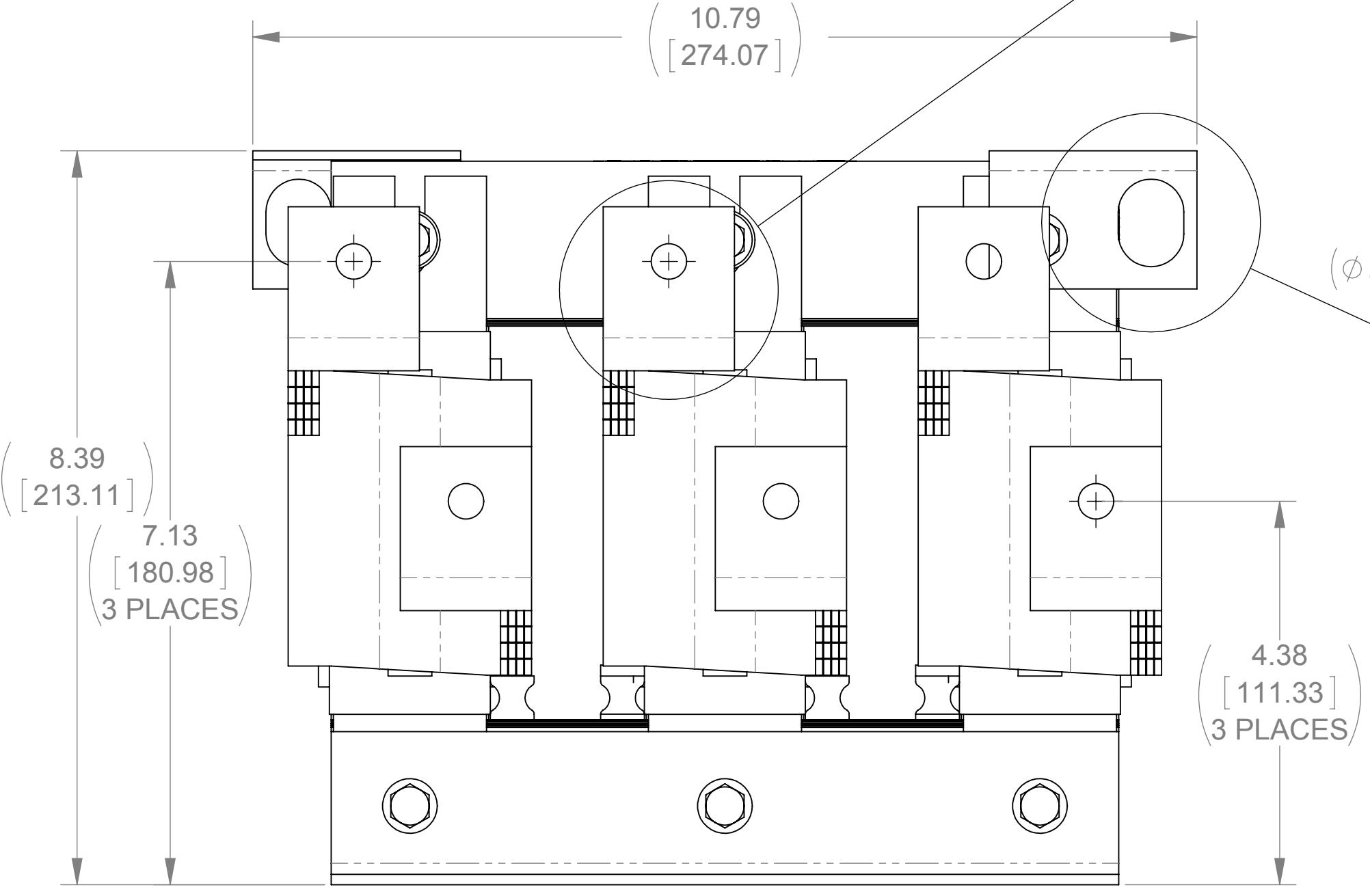
C

B

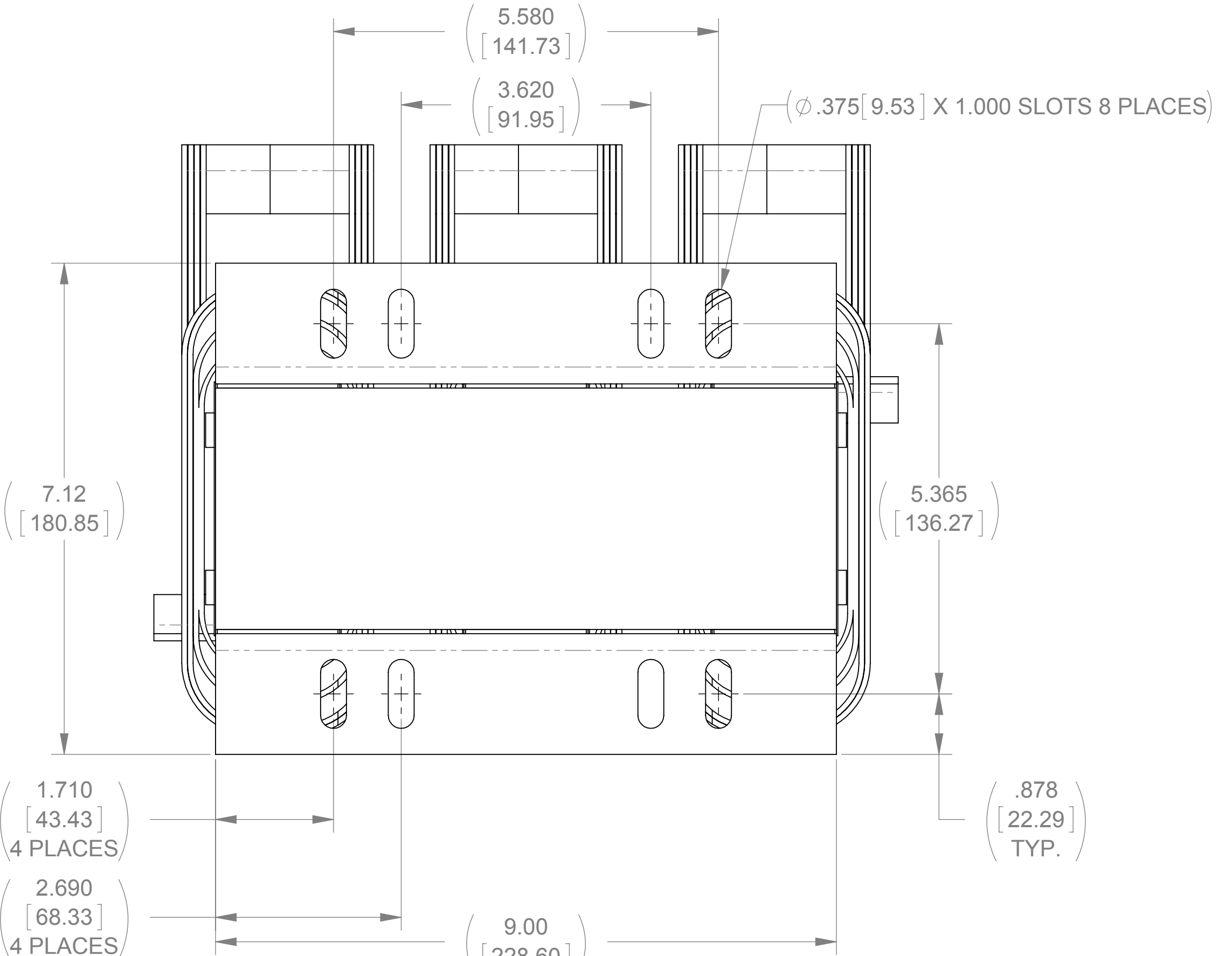
A



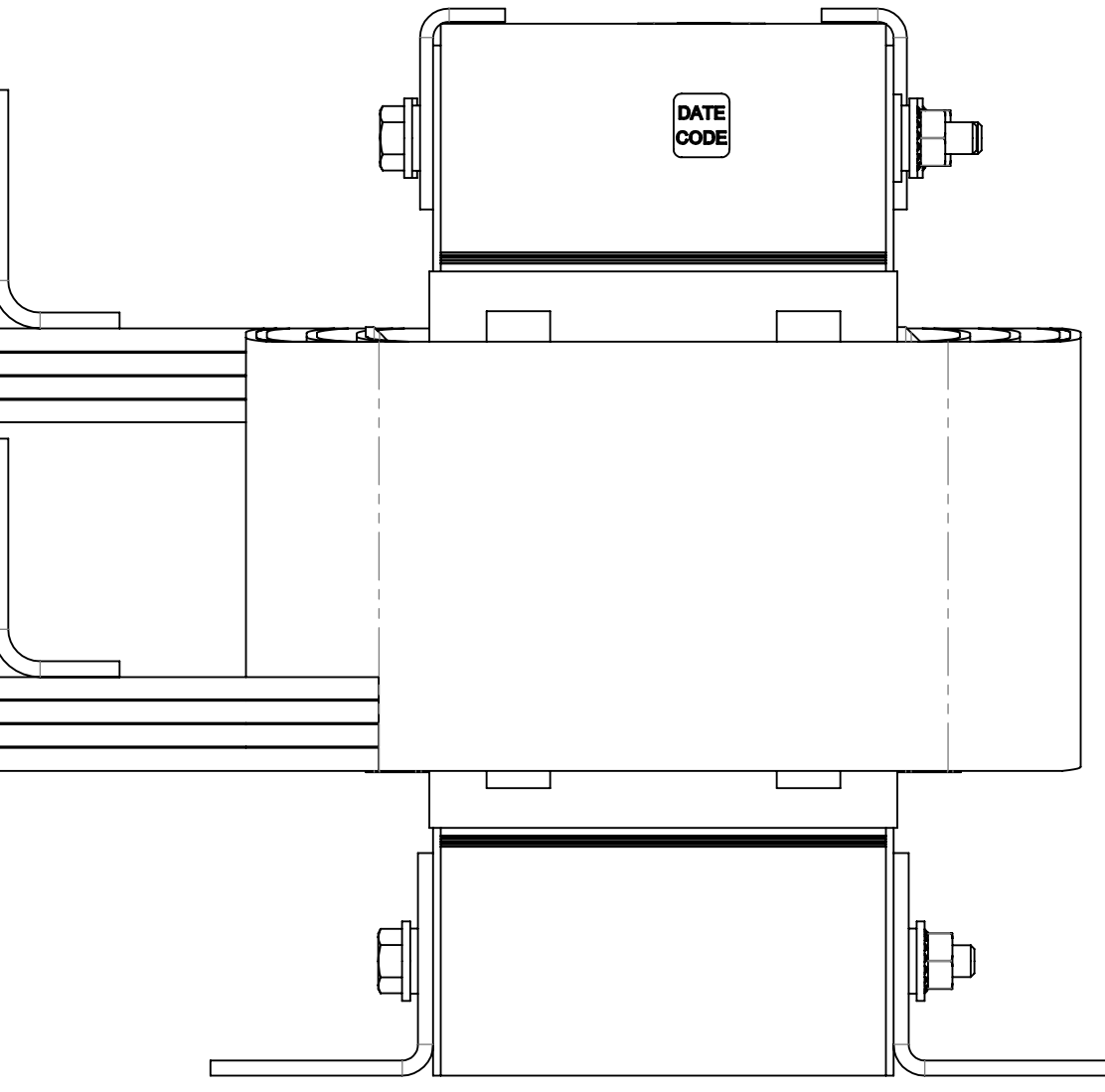
DETAIL A  
6 PLACES



DETAIL B  
2 PLACES



VIEW A-A



<b>THE COMPONENT, PART OR ASSEMBLY DESCRIBED IN THIS DOCUMENT MUST COMPLY WITH THE EU(EUROPEAN UNION) DIRECTIVE RoHS</b>		<b>MATERIAL</b>		<b>CONFIDENTIAL AND PROPRIETARY INFORMATION</b> THIS DOCUMENT CONTAINS CONFIDENTIAL AND PROPRIETARY INFORMATION OF MTE CORPORATION AND MAY NOT BE USED, COPIED OR DISCLOSED TO OTHERS EXCEPT WITH THE AUTHORIZED WRITTEN PERMISSION OF MTE CORPORATION													
CONTAINS <0.1% OF ANY SVHC BY WEIGHT PER REACH REGULATION				<b>DESCRIPTION</b>													
<b>UNLESS OTHERWISE SPECIFIED DIMENSIONS ARE IN INCHES [MM] TOLERANCES ARE:</b>  ANGLES: ± 1 °  1 PLACE .X: ± .1 [2.5]  2 PLACE .XX: ± .03 [0.76]  3 PLACE .XXX: ± .010 [0.254]		<b>MTE</b> <small>AN M/L POWER ELECTRONICS COMPANY</small>  N83 W13330 Leon Road Menomonee Falls, WI 53051 USA 800.455.4683 262.253.8200		3 PHASE REACTOR													
		<table><tr><td>DRAWN RKT</td><td>DATE 06/12/09</td></tr><tr><td>CHECKED TM</td><td>DATE 11/05/12</td></tr><tr><td>APPROVED TM</td><td>DATE 11/05/12</td></tr></table>		DRAWN RKT	DATE 06/12/09	CHECKED TM	DATE 11/05/12	APPROVED TM	DATE 11/05/12	<table><tr><td>SIZE D</td><td>DWG No CD RLW-051501</td><td>REV 03</td></tr><tr><td>SCALE 4:6</td><td colspan="2">SHEET 1 OF 1</td></tr></table>		SIZE D	DWG No CD RLW-051501	REV 03	SCALE 4:6	SHEET 1 OF 1	
DRAWN RKT	DATE 06/12/09																
CHECKED TM	DATE 11/05/12																
APPROVED TM	DATE 11/05/12																
SIZE D	DWG No CD RLW-051501	REV 03															
SCALE 4:6	SHEET 1 OF 1																