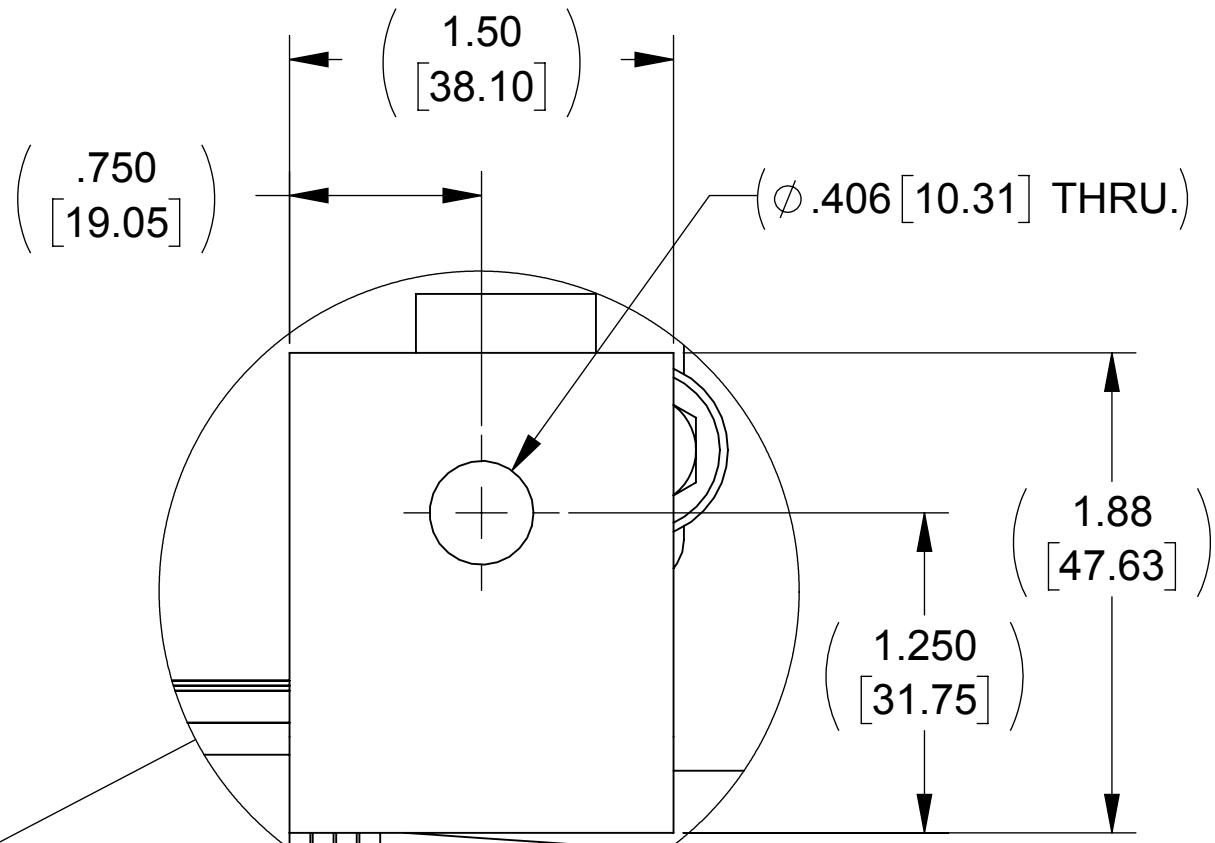
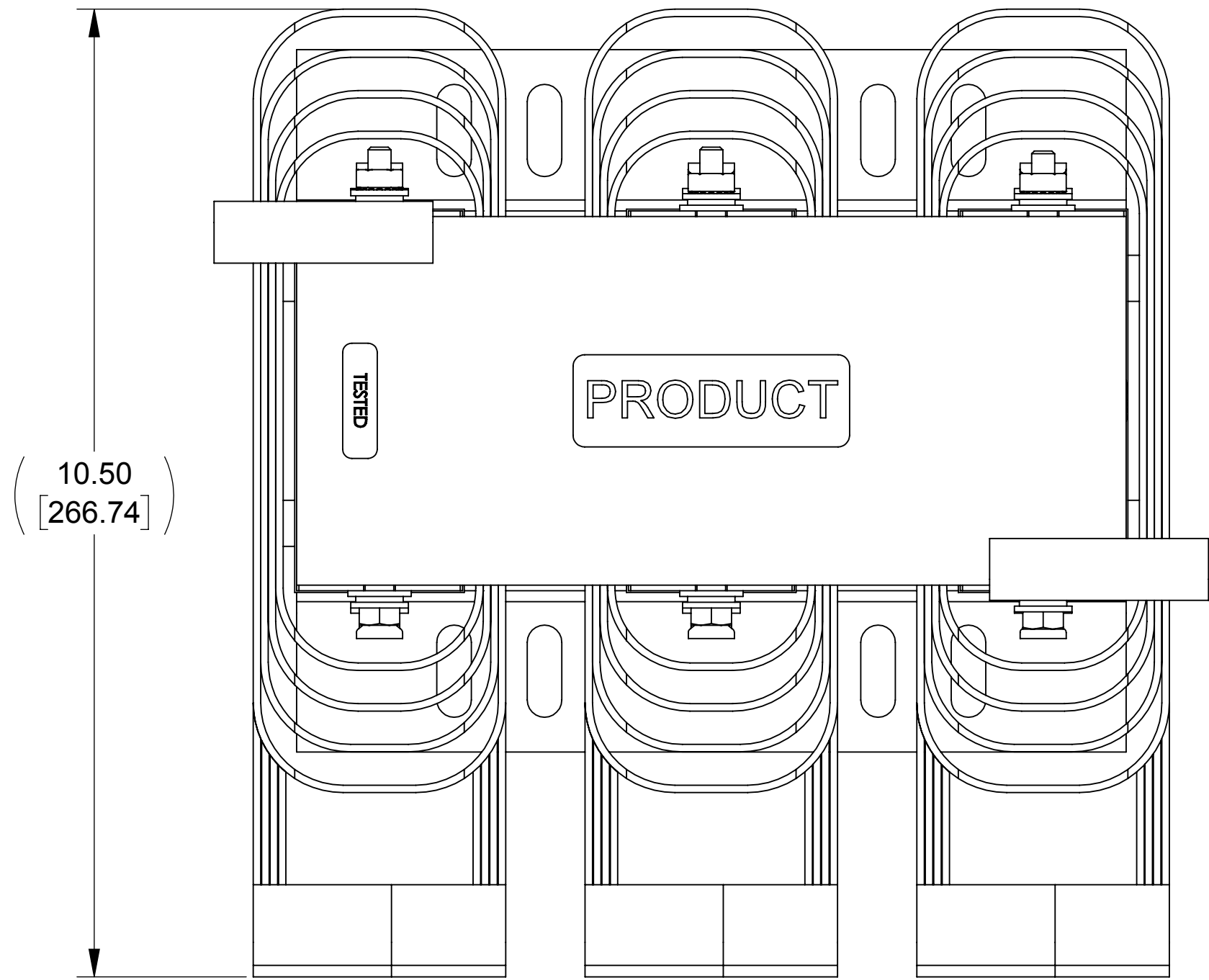
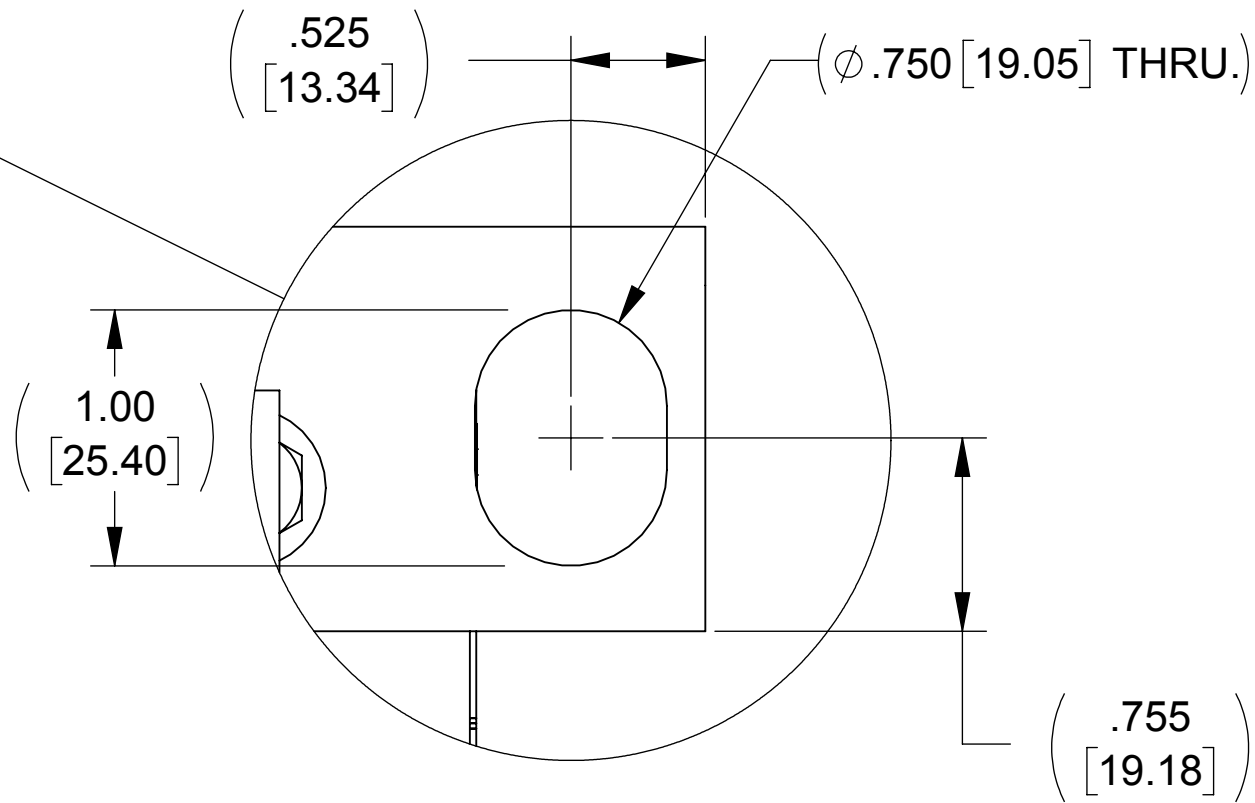
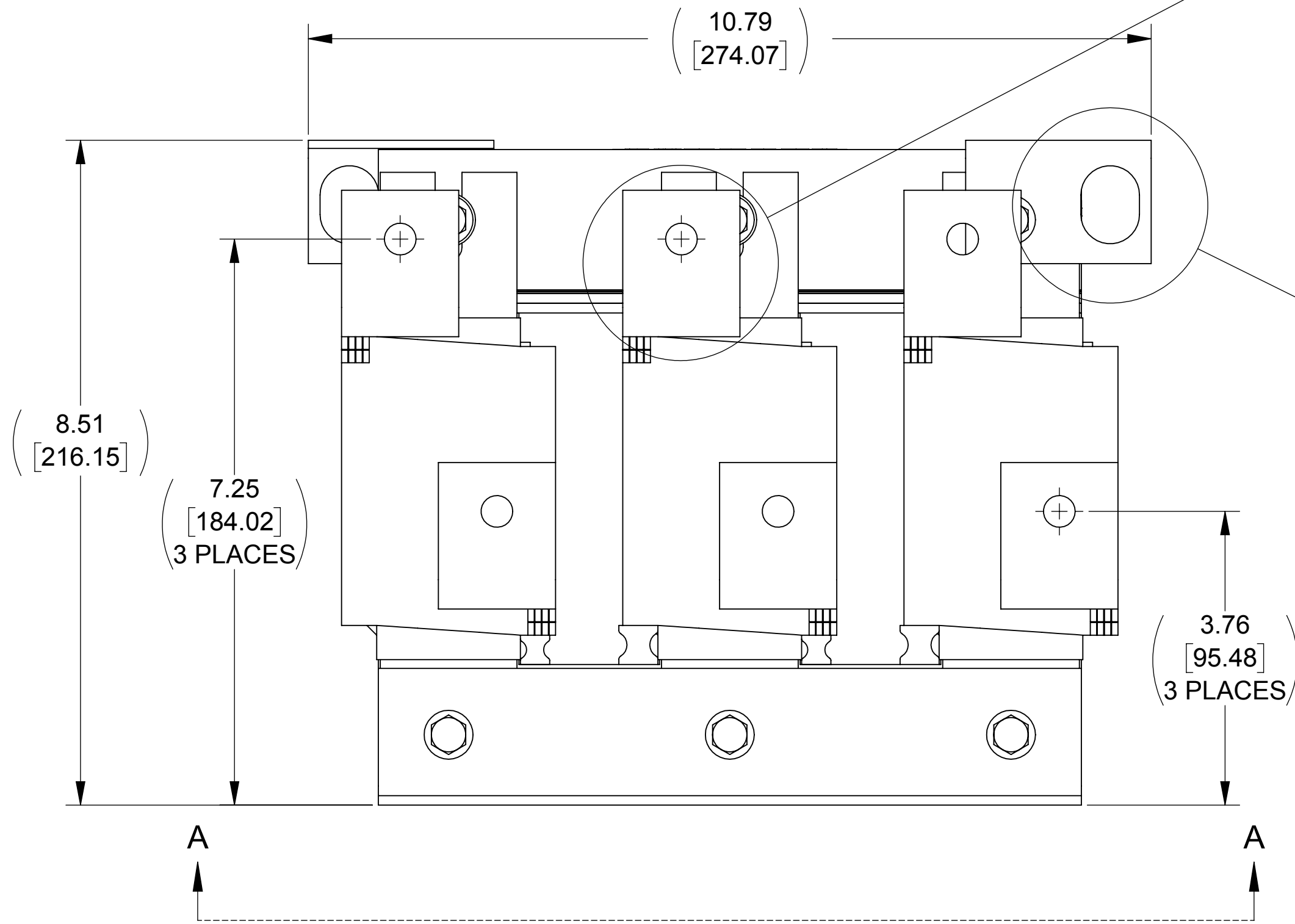


WEIGHT (LBS)	INDUCTANCE	LOSS (WATTS)
93	.160mH	402

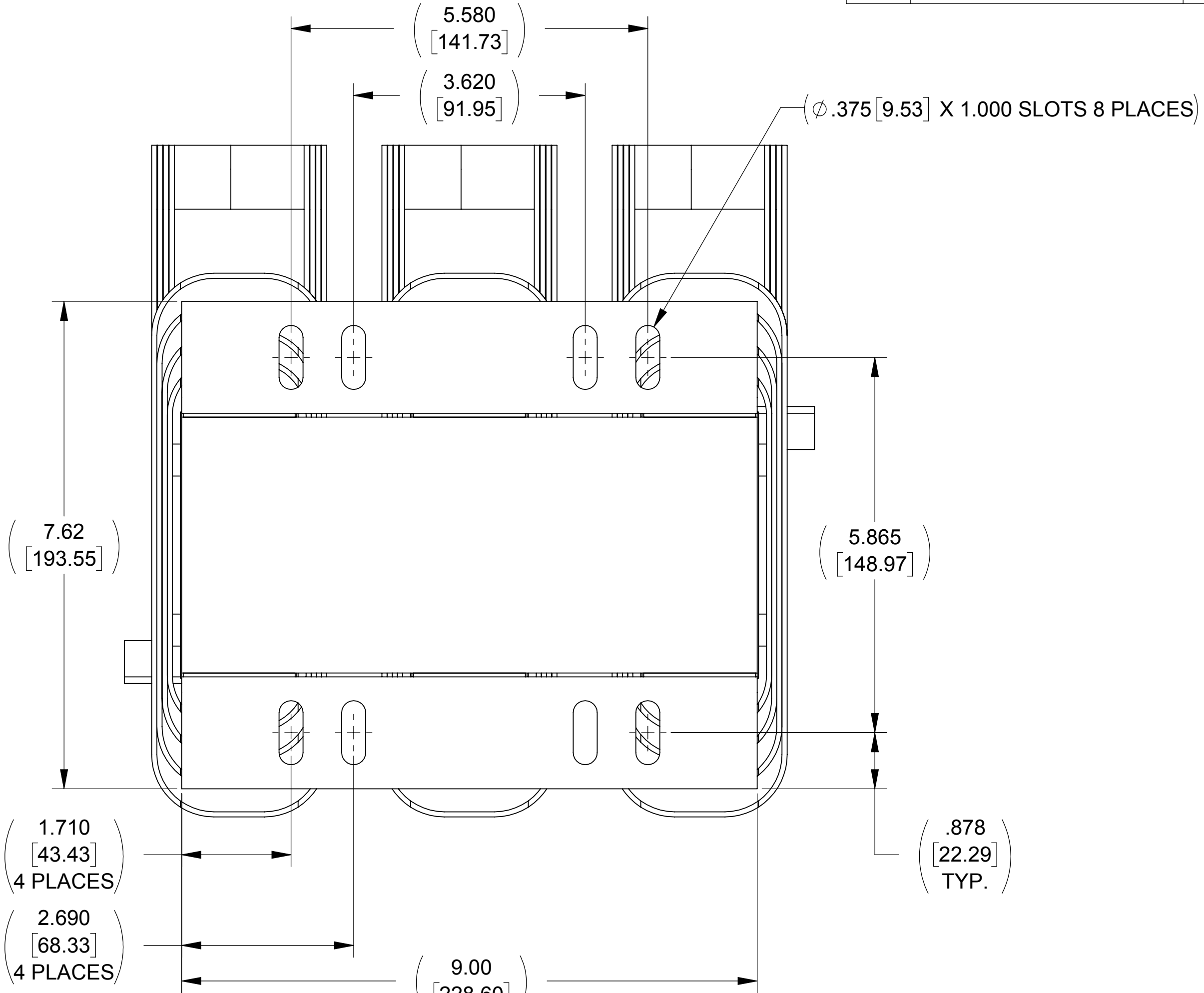
ECO No	DESCRIPTION	REV BY	DATE
M11833	ADDED TESTED LABEL	BD	06/11/19



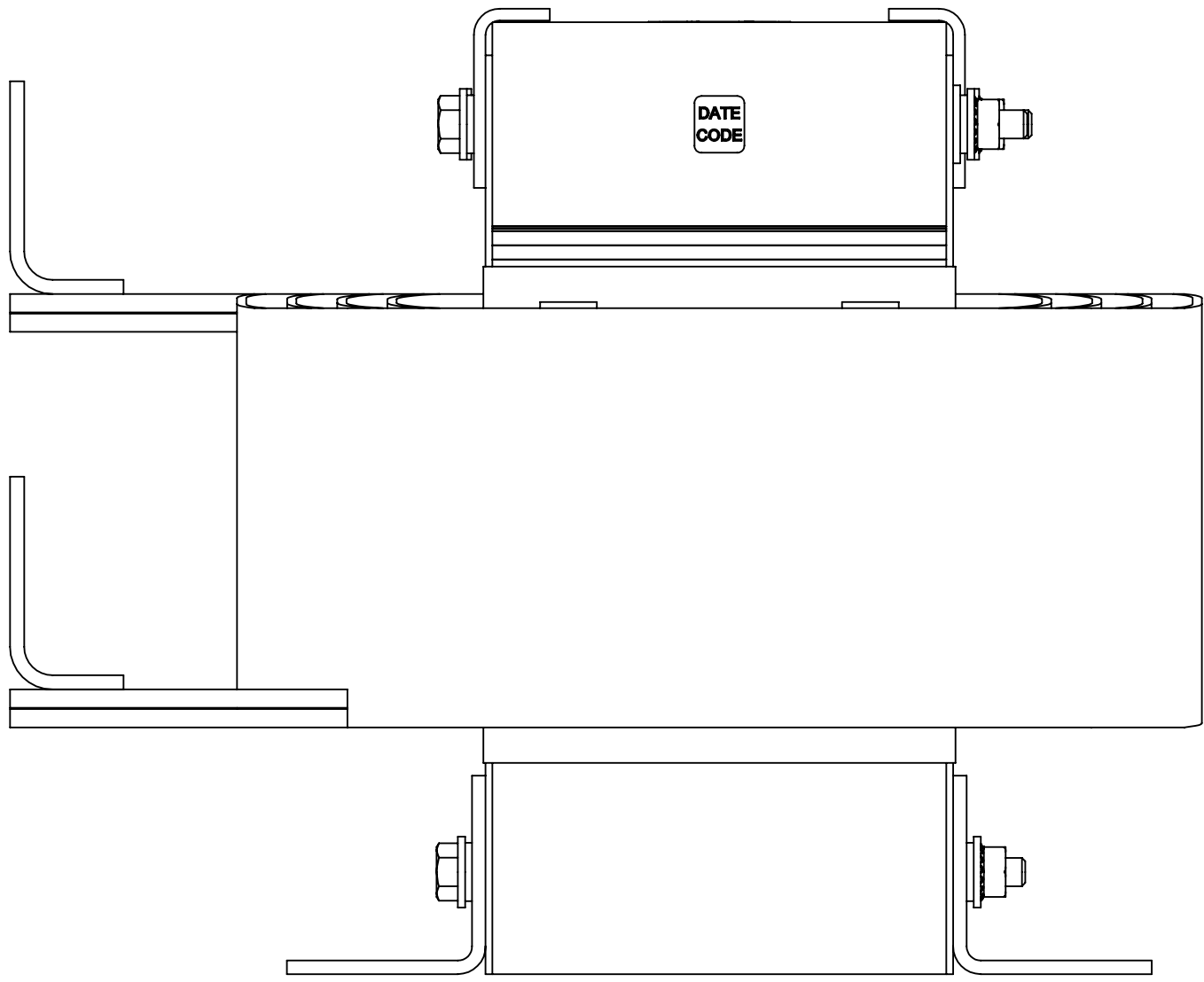
DETAIL A
6 PLACES




DETAIL B
2 PLACES



VIEW A-A



THE COMPONENT, PART OR ASSEMBLY DESCRIBED IN THIS DOCUMENT MUST COMPLY WITH THE EU(EUROPEAN UNION) DIRECTIVE RoHS		MATERIAL		CONFIDENTIAL AND PROPRIETARY INFORMATION THIS DOCUMENT CONTAINS CONFIDENTIAL AND PROPRIETARY INFORMATION OF MTE CORPORATION AND MAY NOT BE USED, COPIED OR DISCLOSED TO OTHERS EXCEPT WITH THE AUTHORIZED WRITTEN PERMISSION OF MTE CORPORATION			
CONTAINS <0.1% OF ANY SVHC BY WEIGHT PER REACH REGULATION				DESCRIPTION			
UNLESS OTHERWISE SPECIFIED DIMENSIONS ARE IN INCHES [MM] TOLERANCES ARE: ANGLES: ± 1 ° 1 PLACE .X: ± .1 [2.5] 2 PLACE .XX: ± .03 [0.76] 3 PLACE .XXX: ± .010 [0.254]		 N83 W13330 Leon Road Menomonee Falls, WI 53051 USA 800.455.4683 262.253.8200		DRAWN		DATE	
				RKT		04/29/09	
				CHECKED		DATE	
				BD		06/11/19	
				APPROVED		DATE	
				AK		06/14/19	
				SIZE		DWG No	
				D		CD RLW-025005	
				SCALE		REV	
				4:6		05	
						SHEET 1 OF 1	