

WEIGHT (LBS)	INDUCTANCE	LOSS (WATTS)
53	.260mH	309

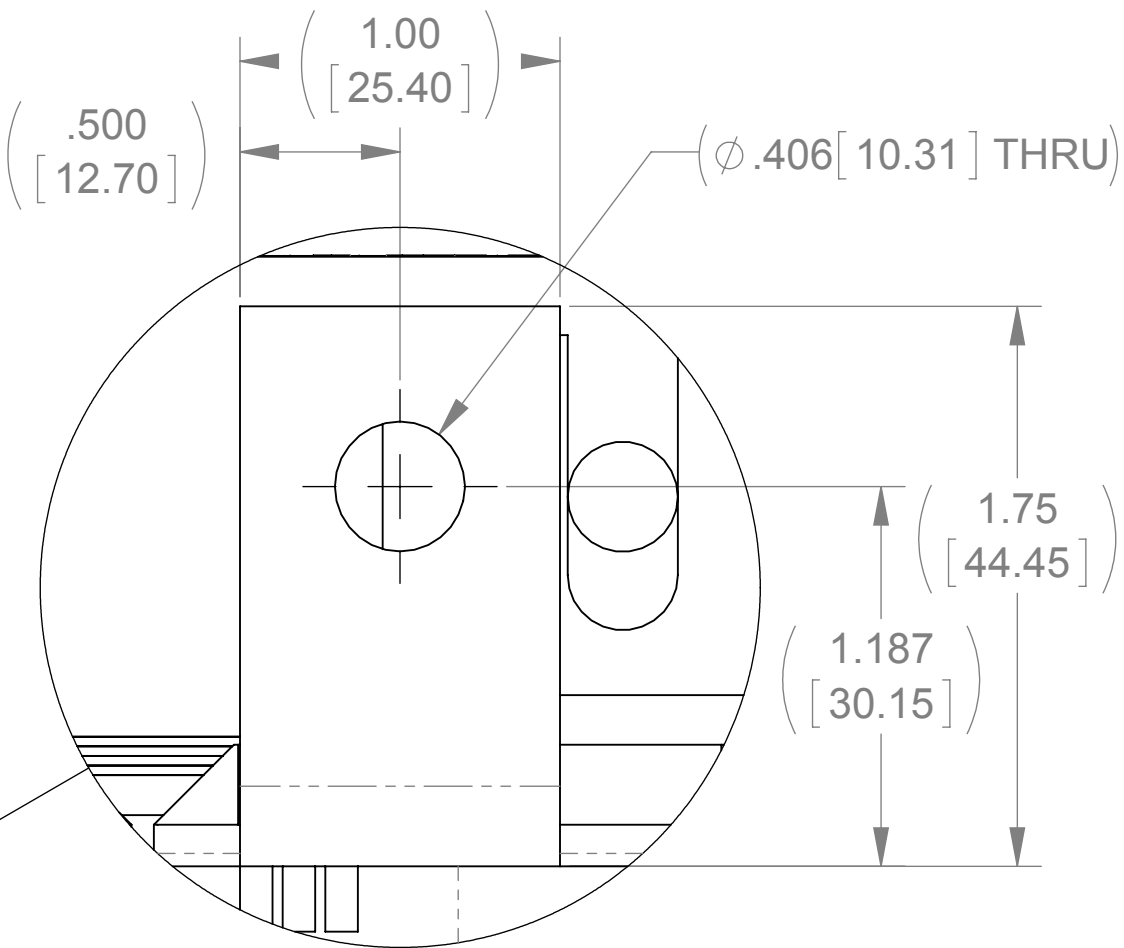
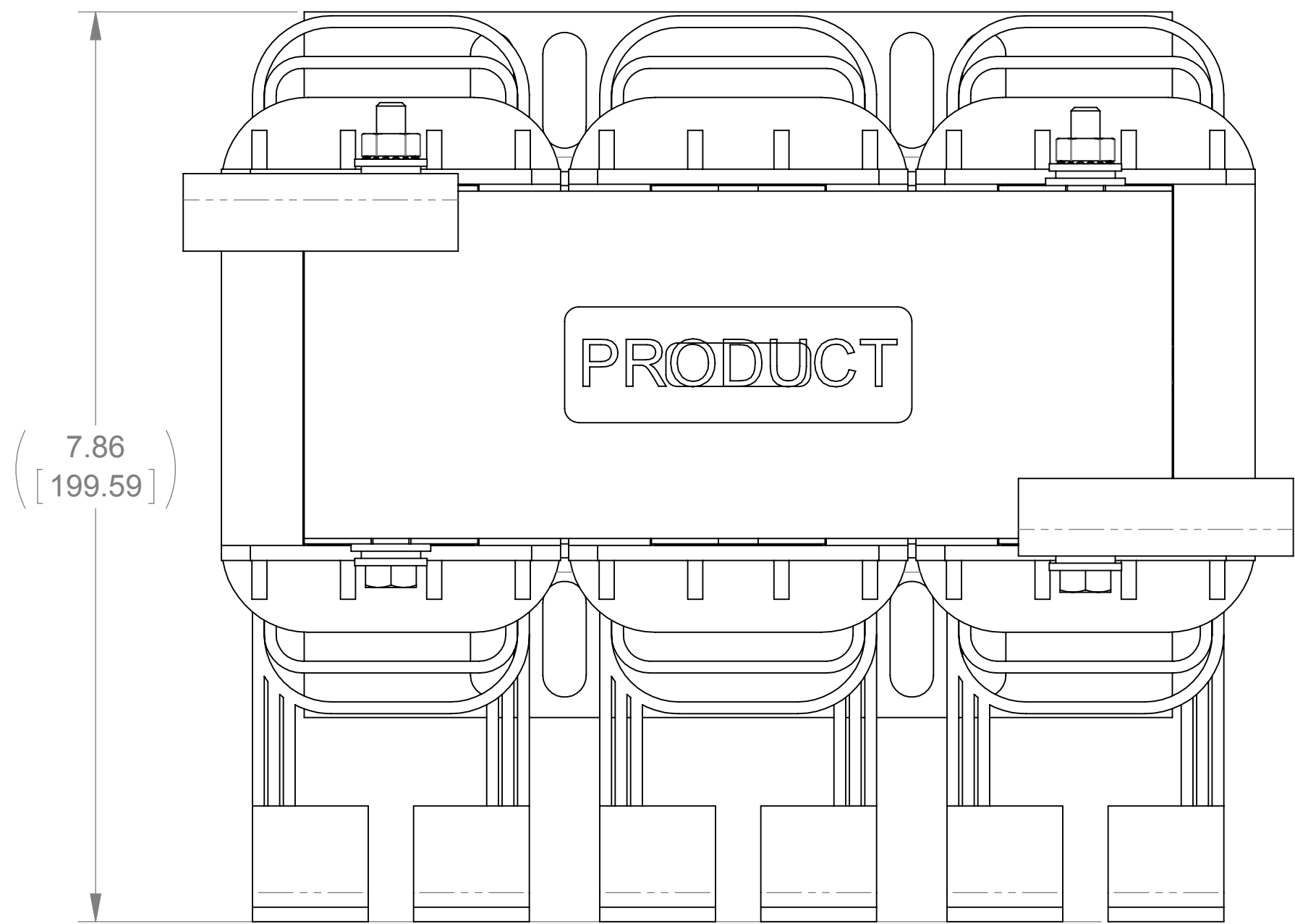
ECO No	DESCRIPTION	REV BY	DATE
M8240	REDRAW IN SOLIDWORKS	JP	10/12/12

D

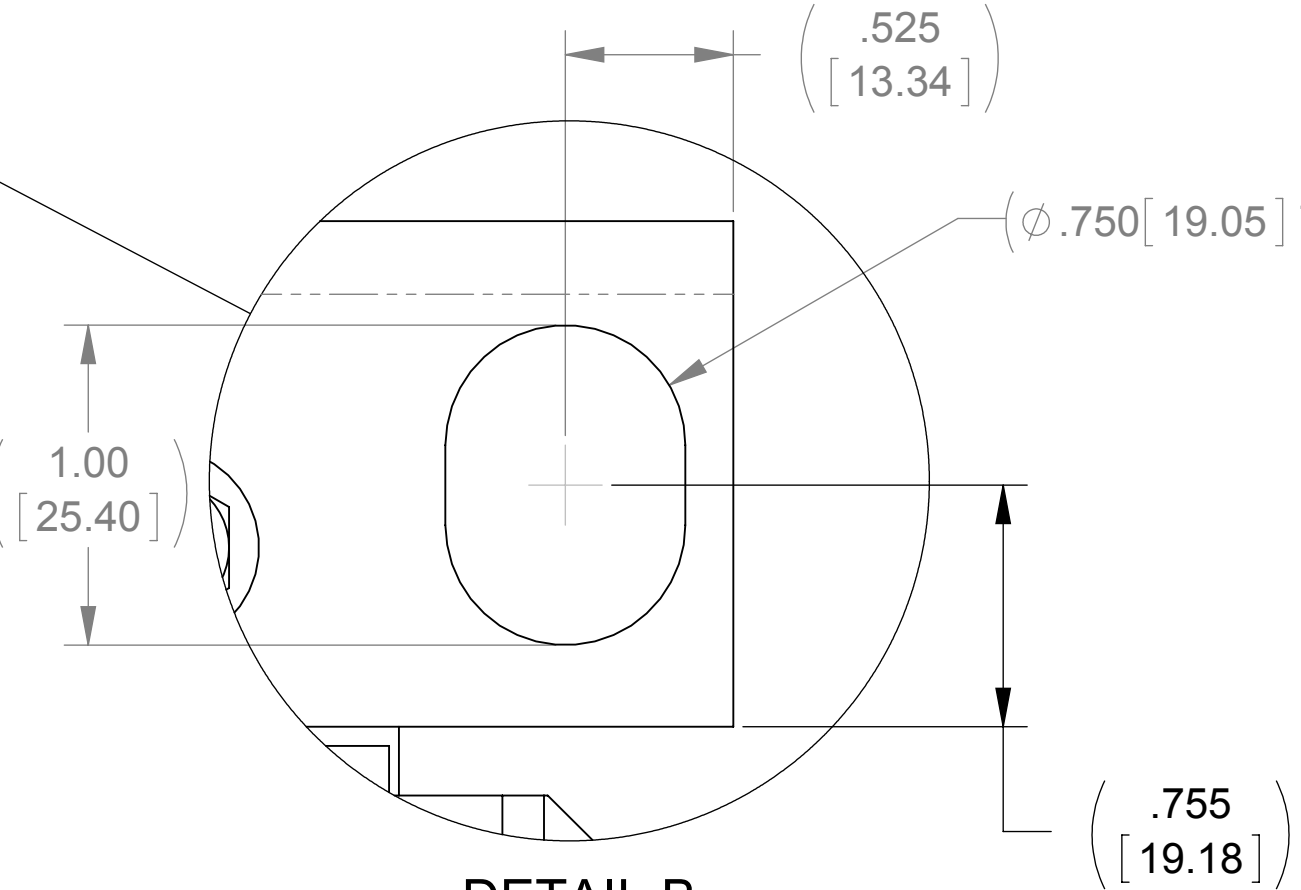
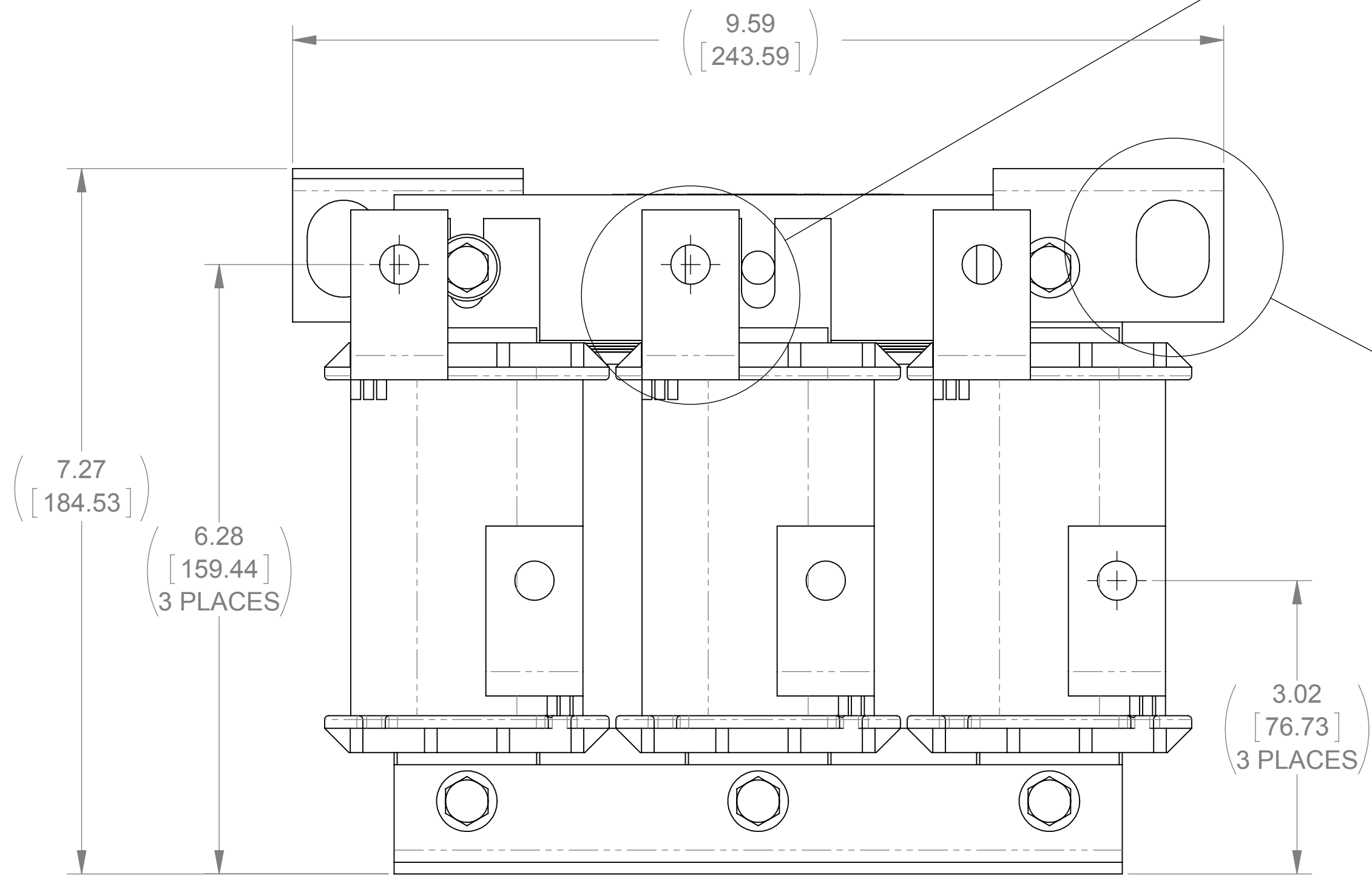
C

B

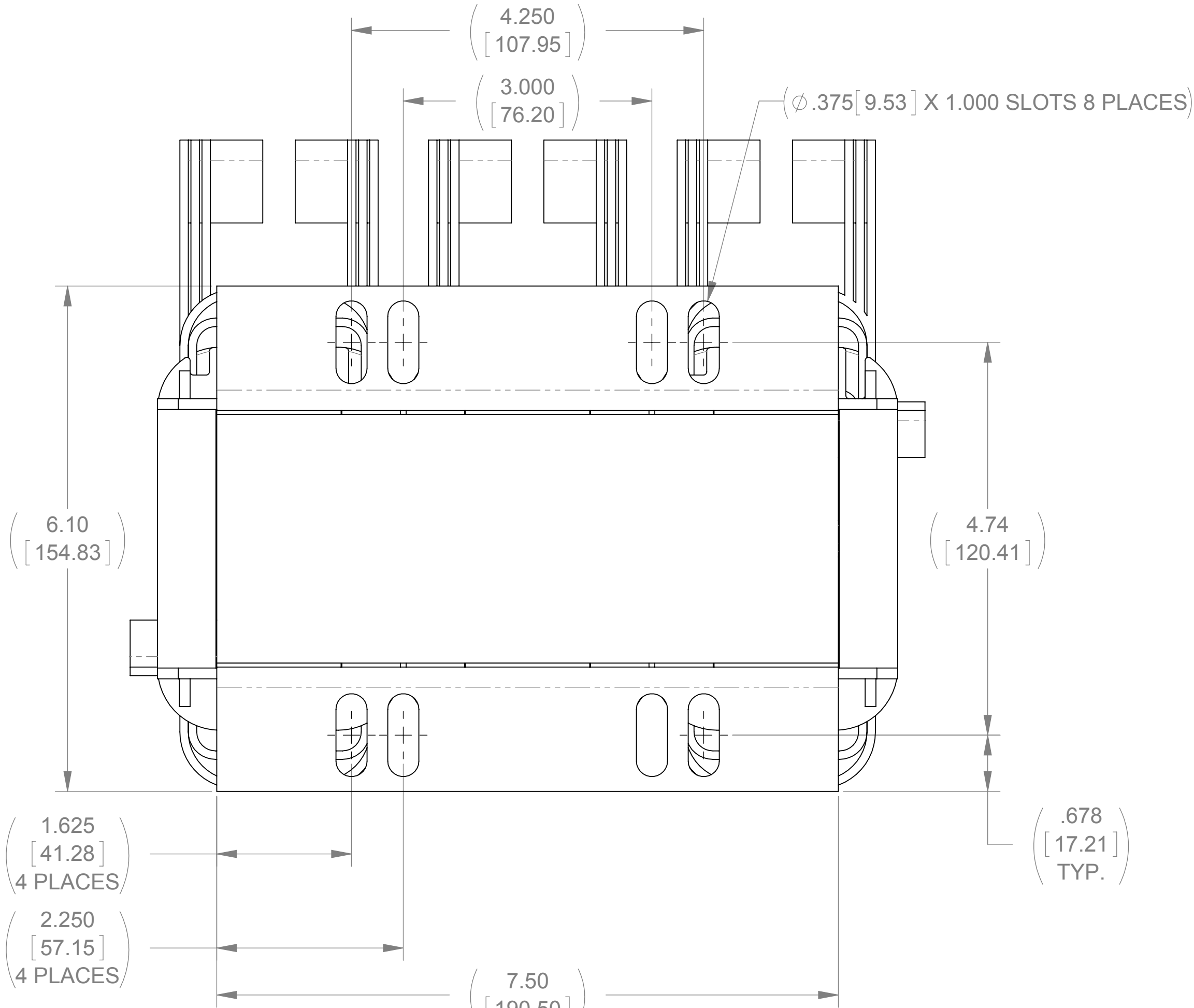
A



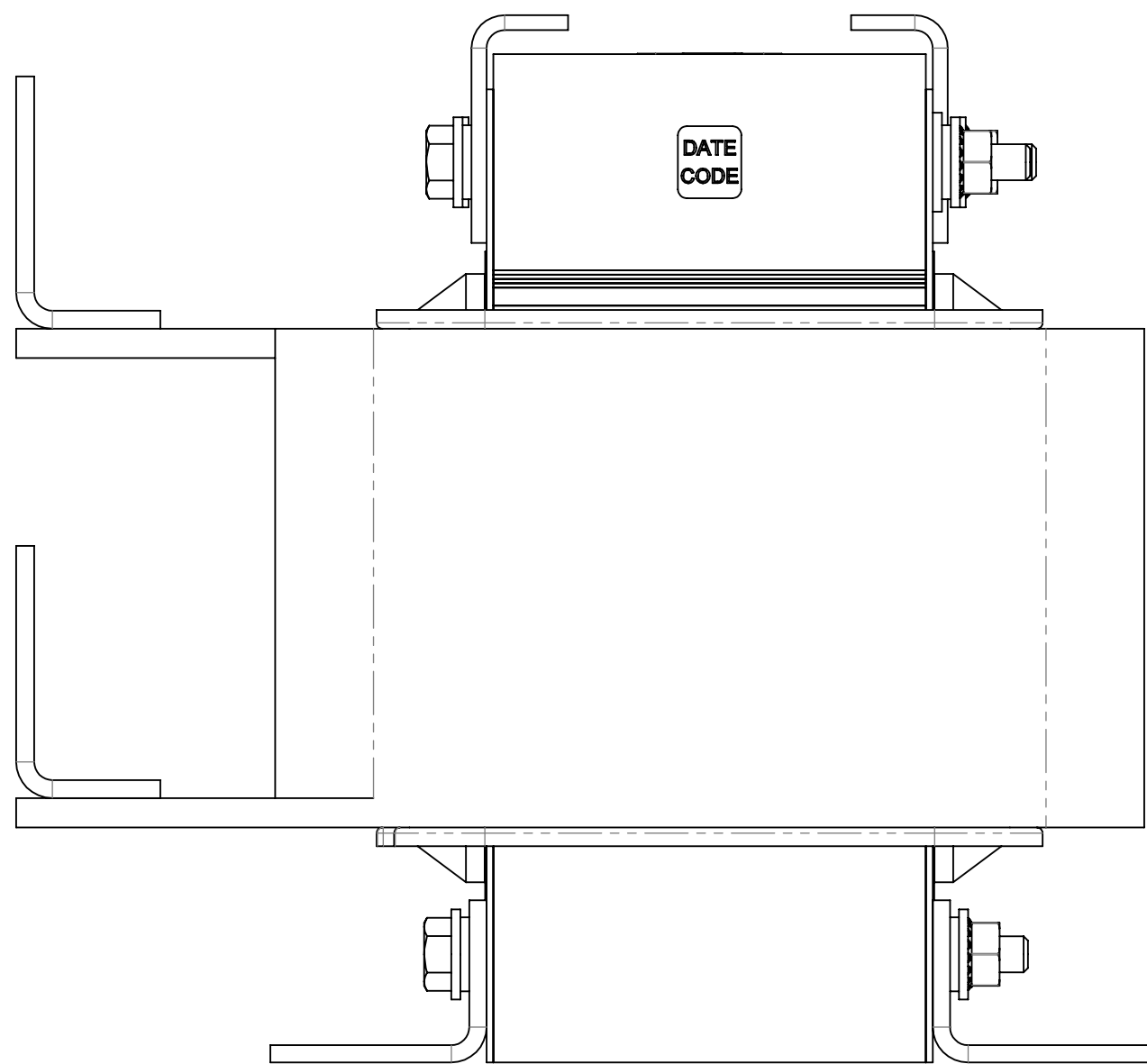
DETAIL A
6 PLACES



DETAIL B
2 PLACES



VIEW A-A



THE COMPONENT, PART OR ASSEMBLY DESCRIBED IN THIS DOCUMENT MUST COMPLY WITH THE EU (EUROPEAN UNION) DIRECTIVE RoHS		MATERIAL		CONFIDENTIAL AND PROPRIETARY INFORMATION THIS DOCUMENT CONTAINS CONFIDENTIAL AND PROPRIETARY INFORMATION OF MTE CORPORATION AND MAY NOT BE USED, COPIED OR DISCLOSED TO OTHERS EXCEPT WITH THE AUTHORIZED WRITTEN PERMISSION OF MTE CORPORATION		
CONTAINS <0.1% OF ANY SVHC BY WEIGHT PER REACH REGULATION				DESCRIPTION		
UNLESS OTHERWISE SPECIFIED DIMENSIONS ARE IN INCHES [MM] TOLERANCES ARE: ANGLES: ± 1 ° 1 PLACE .X: ± .1 [2.5] 2 PLACE .XX: ± .03 [0.76] 3 PLACE .XXX: ± .010 [0.254]		MTE AN BL POWER ELECTRONICS COMPANY N83 W13330 Leon Road Menomonee Falls, WI 53051 USA 800.455.4683 262.253.8200		3 PHASE REACTOR		
		DRAWN RKT	DATE 04/15/09			
		CHECKED TM	DATE 10/22/12			
		APPROVED TM	DATE 10/22/12	SIZE D	DWG No. CD RLW-016005	REV 03
		SCALE 5:6		SHEET 1 OF 1		