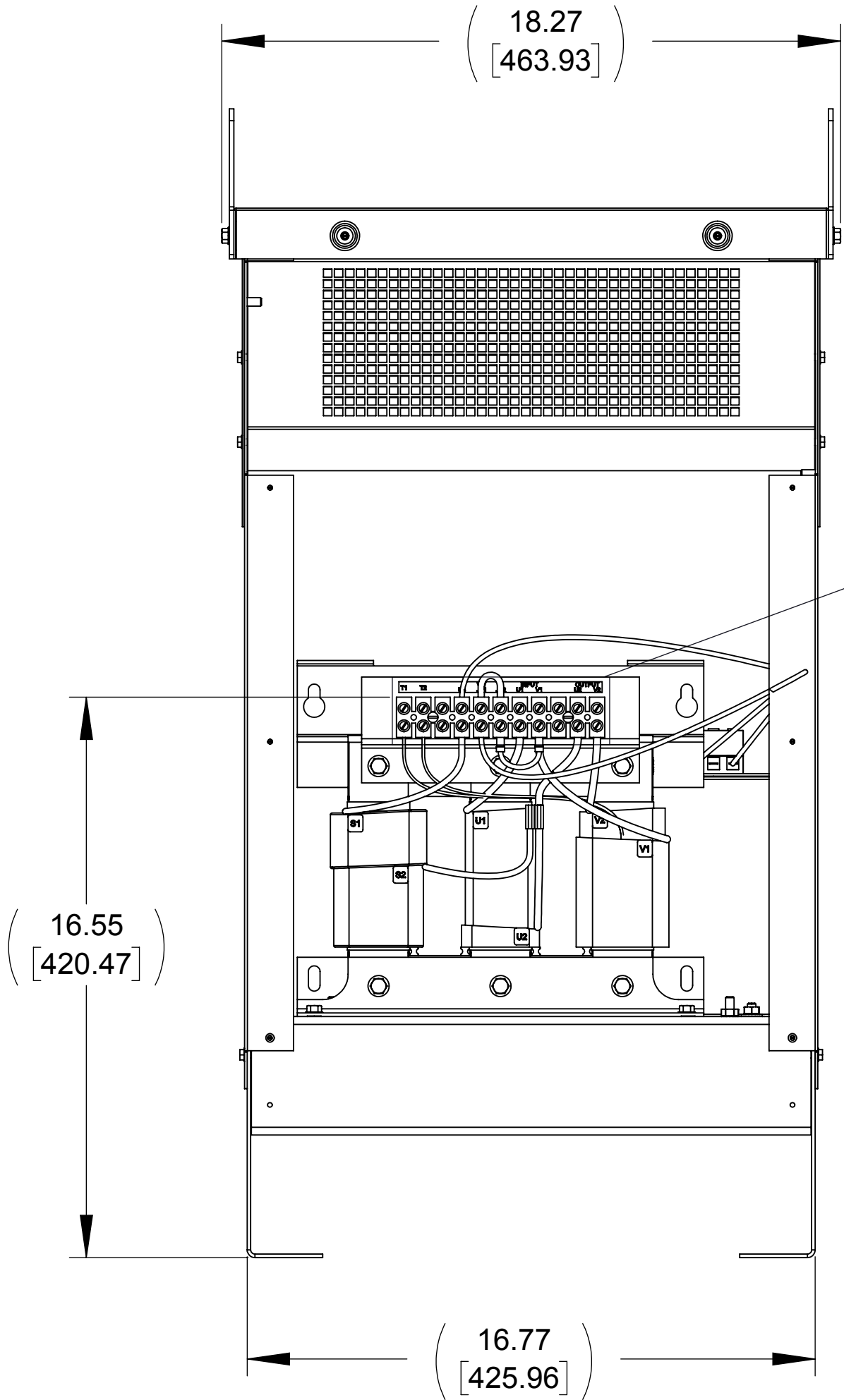
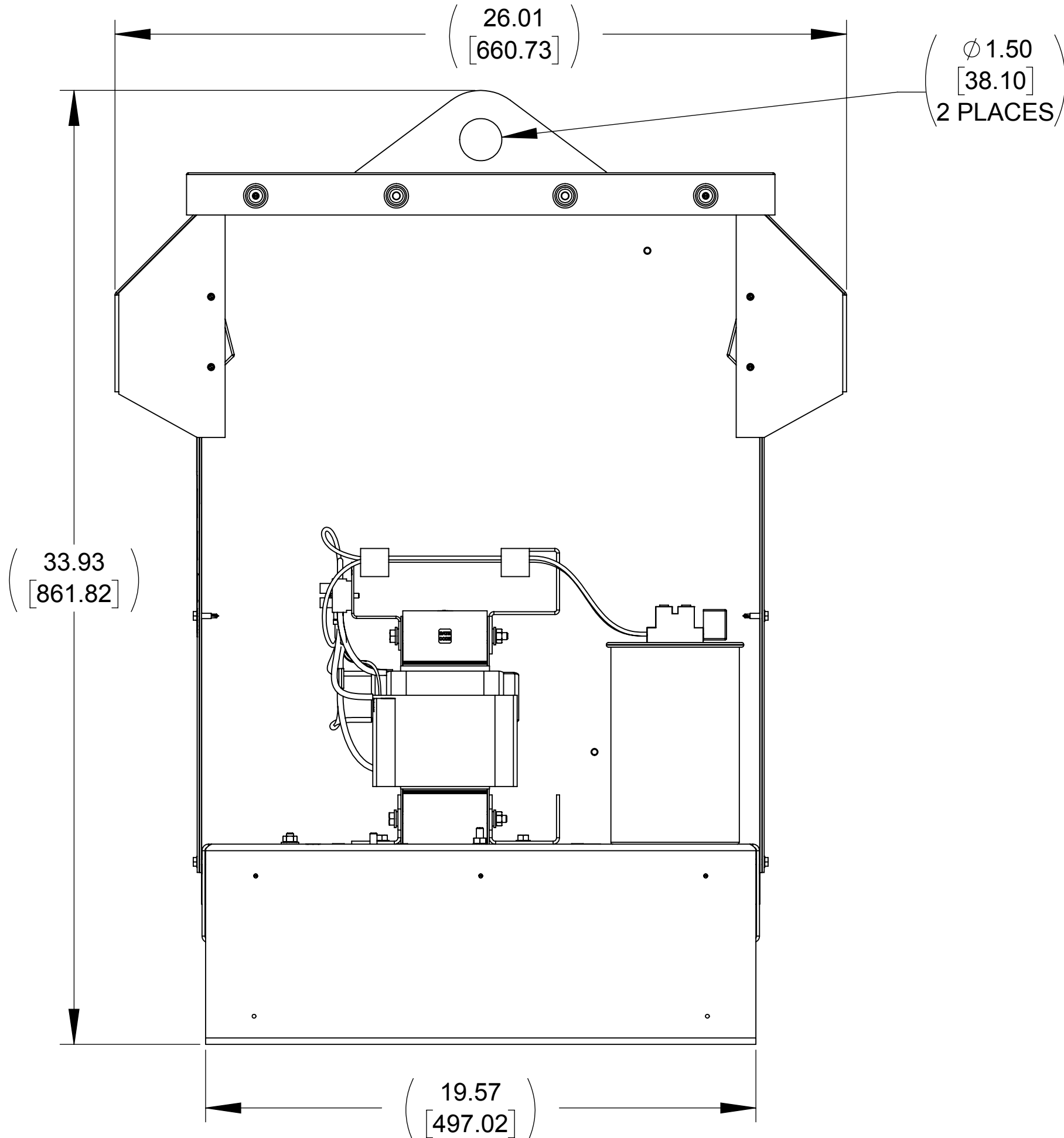


| APPROX. WEIGHT (LBS) |
|-------------------------|
| 160 |

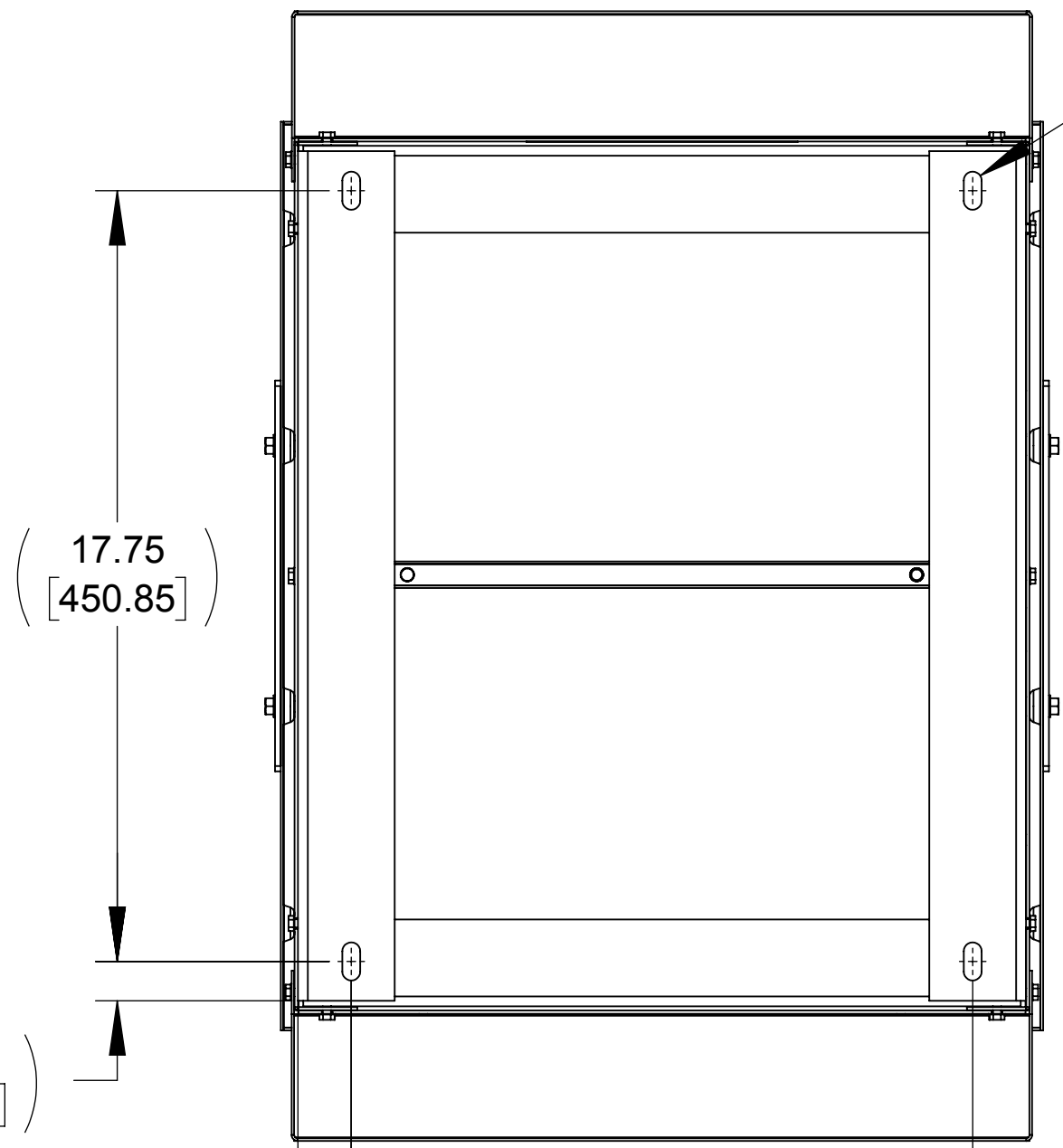
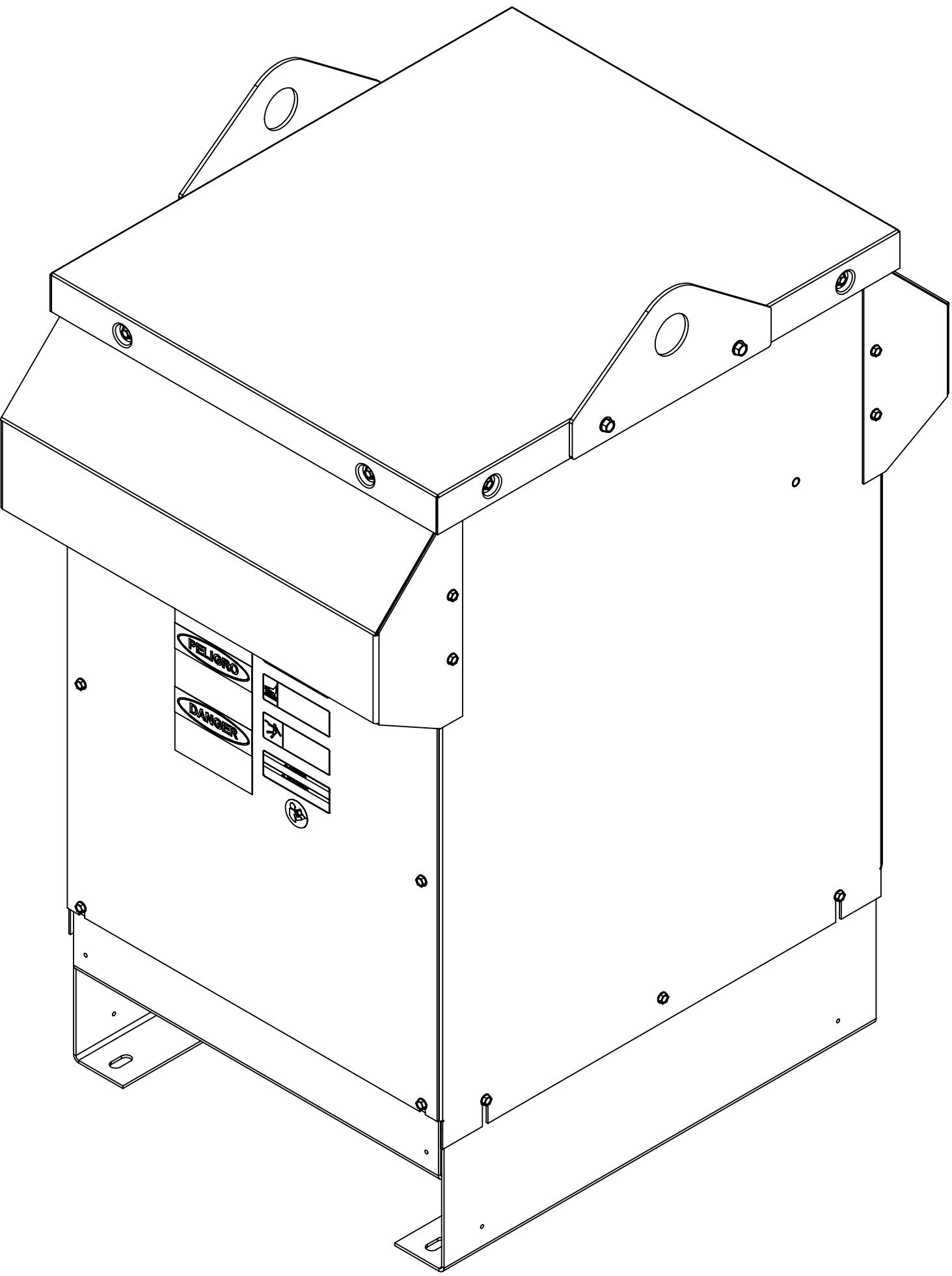
| ECO No | DESCRIPTION | REV BY | DATE |
|--------|--------------------------|--------|----------|
| M9700 | UPDATE TO SHOW NEW LEADS | MN | 10/14/15 |



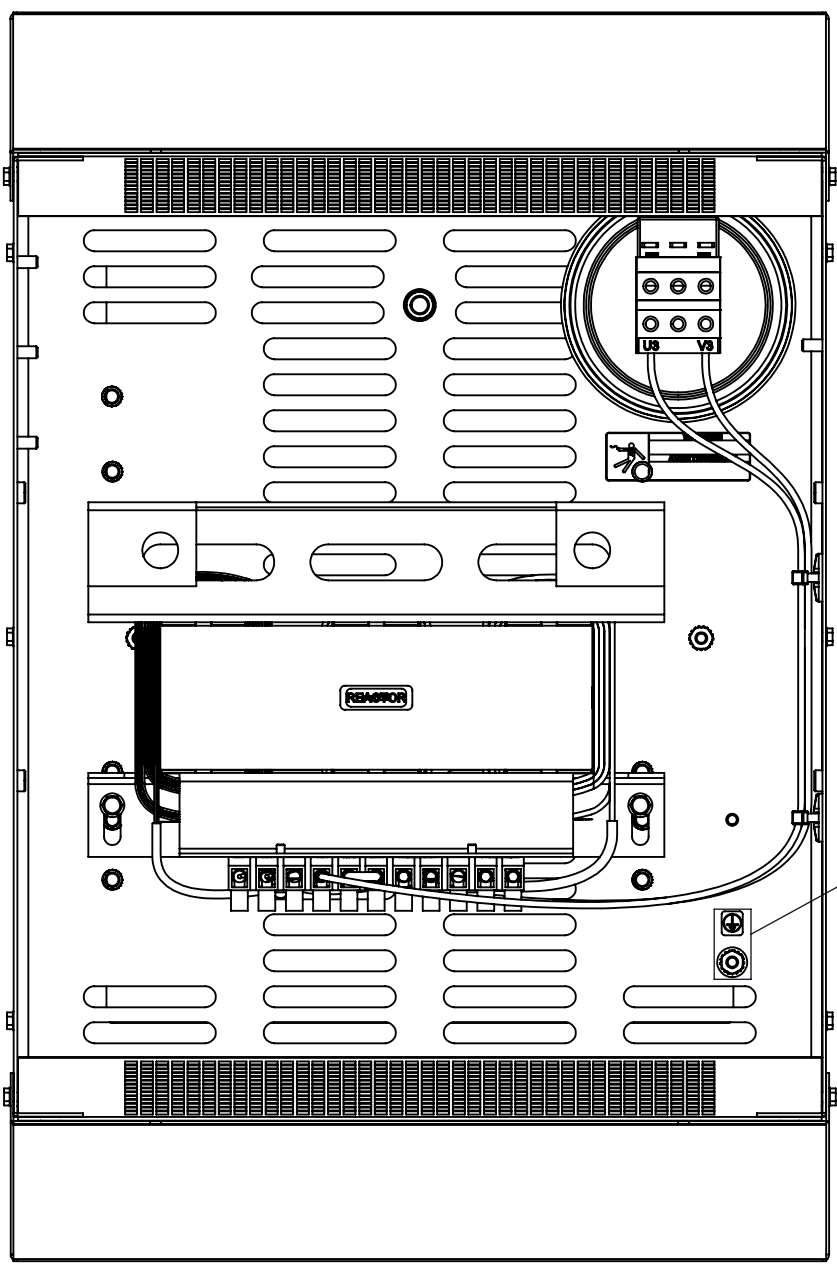
FRONT VIEW
(PANELS REMOVED)



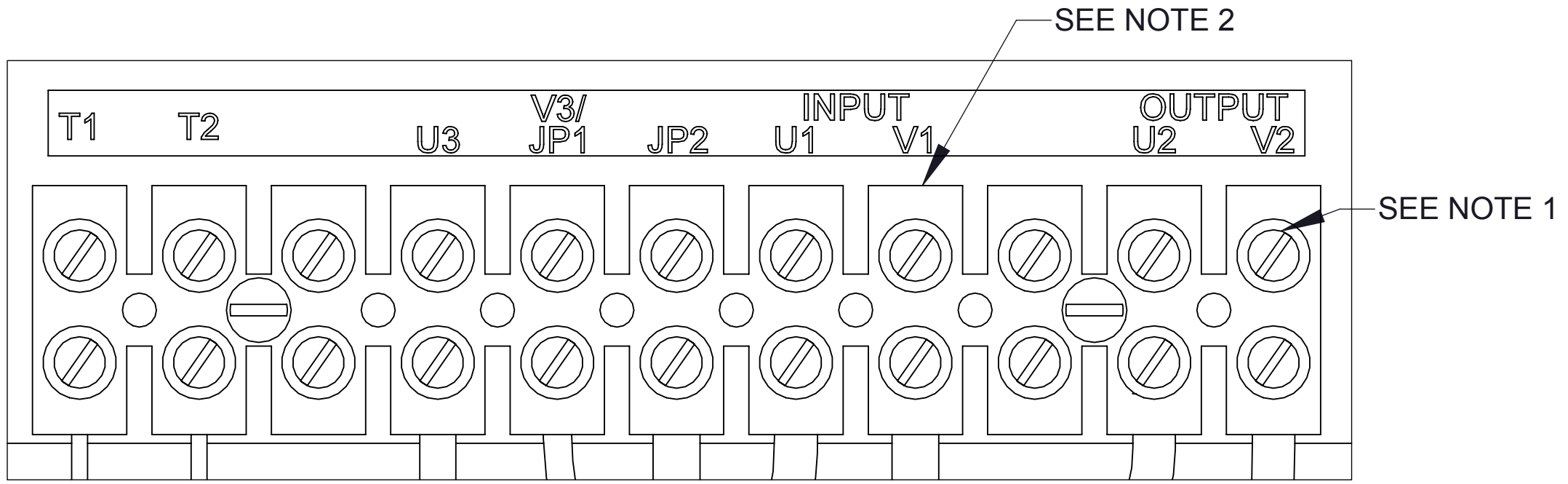
SIDE VIEW
(PANELS REMOVED)



BOTTOM VIEW



TOP VIEW
(PANELS REMOVED)



DETAIL A
CUSTOMER CONNECTION
DETAIL VIEW

- NOTES:**
1. TERMINAL SCREW TIGHTENING TORQUE: 16 IN/LBS.
2. WIRE RANGE: 4-14 AWG.
3. REFER TO USER MANUAL FOR COMPLETE INSTALLATION INSTRUCTIONS.

| | | | | | | | |
|--|--|--|----------------|------------------|--|------------------------|-----------|
| THE COMPONENT, PART OR ASSEMBLY DESCRIBED IN THIS DOCUMENT MUST COMPLY WITH THE EU(EUROPEAN UNION) DIRECTIVE RoHS2 | | | MATERIAL | | CONFIDENTIAL AND PROPRIETARY INFORMATION THIS DOCUMENT CONTAINS CONFIDENTIAL AND PROPRIETARY INFORMATION OF MTE CORPORATION AND MAY NOT BE USED, COPIED OR DISCLOSED TO OTHERS EXCEPT WITH THE AUTHORIZED WRITTEN PERMISSION OF MTE CORPORATION | | |
| CONTAINS <0.1% OF ANY SVHC BY WEIGHT PER REACH REGULATION | | | | | DESCRIPTION | | |
| UNLESS OTHERWISE SPECIFIED DIMENSIONS ARE IN INCHES [MM] TOLERANCES ARE: ANGLES: ± 1 ° 1 PLACE .X: ± .1 [2.5] 2 PLACE .XX: ± .03 [0.76] 3 PLACE .XXX: ± .010 [0.254] | | | DRAWN MN | DATE 01/02/15 | MATRIX SINGLE PH FILTER 24A, 480V, 60HZ NEMA 3R ENCL | | |
| | | | CHECKED TM | DATE 10/20/15 | | | |
| | | | APPROVED TM | DATE 10/20/15 | SIZE D | DWG No. CD MSW0024D | REV 01 |
| | | | SCALE 1:4 | | SHEET 1 OF 1 | | |



N83 W13330 Leon Road
Menomonee Falls, WI 53051 USA
800.455.4683
262.253.8200