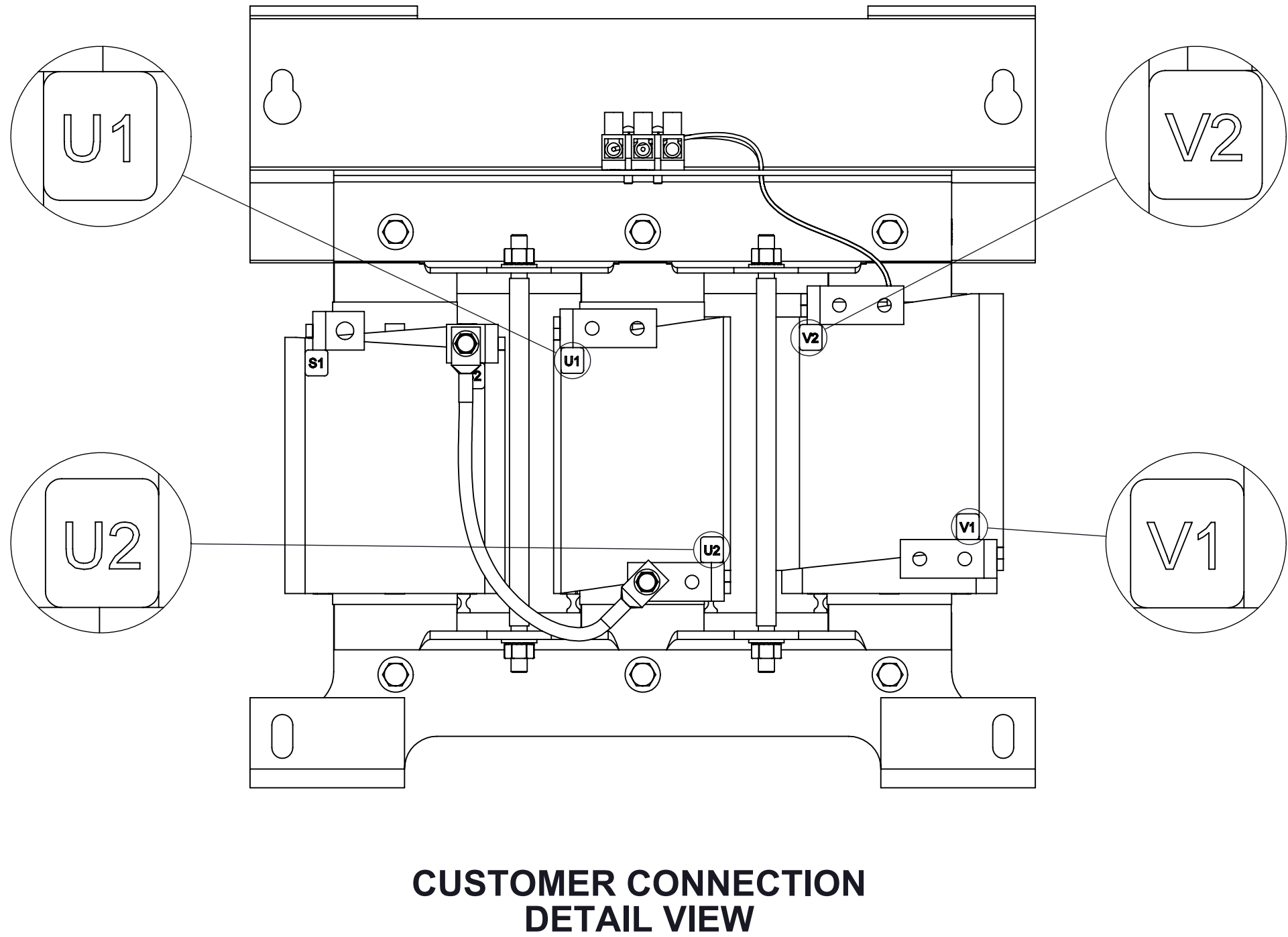
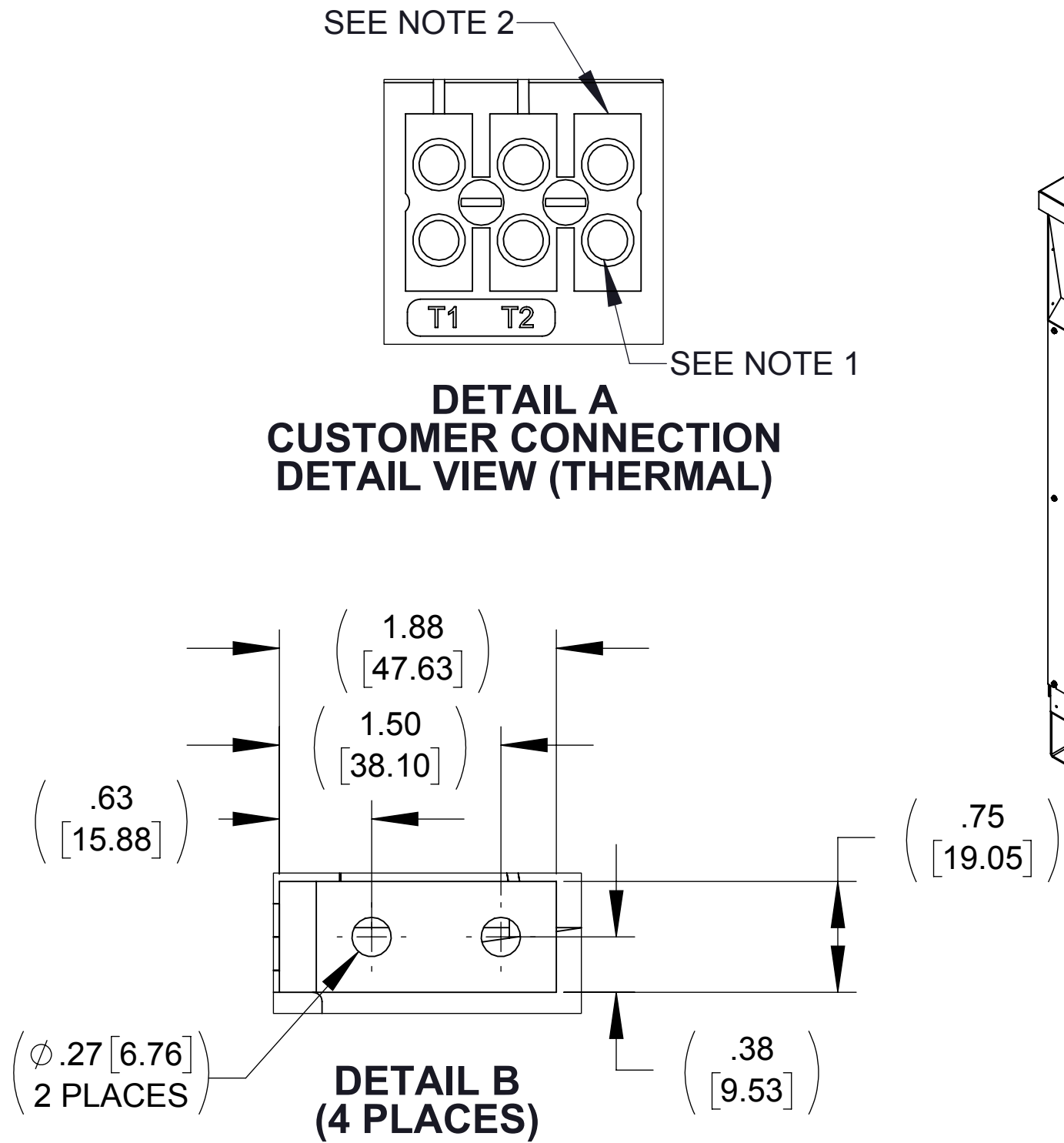
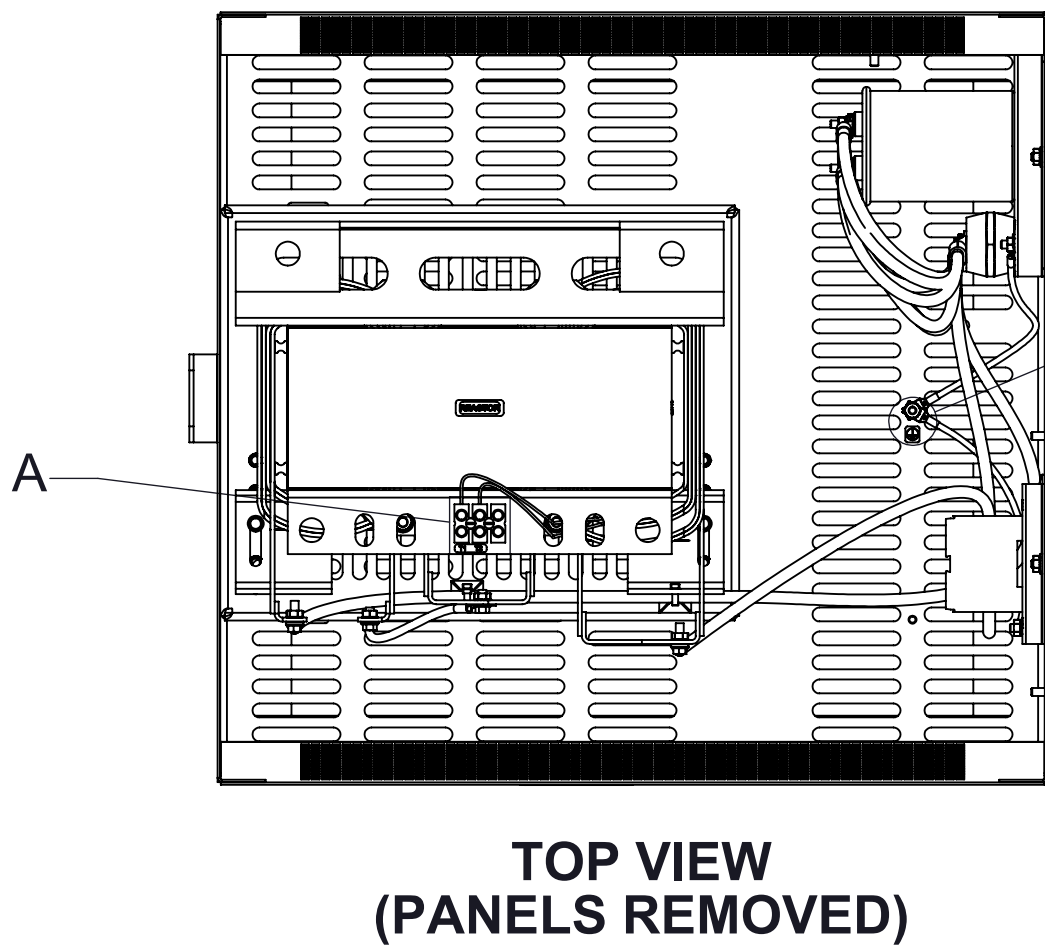
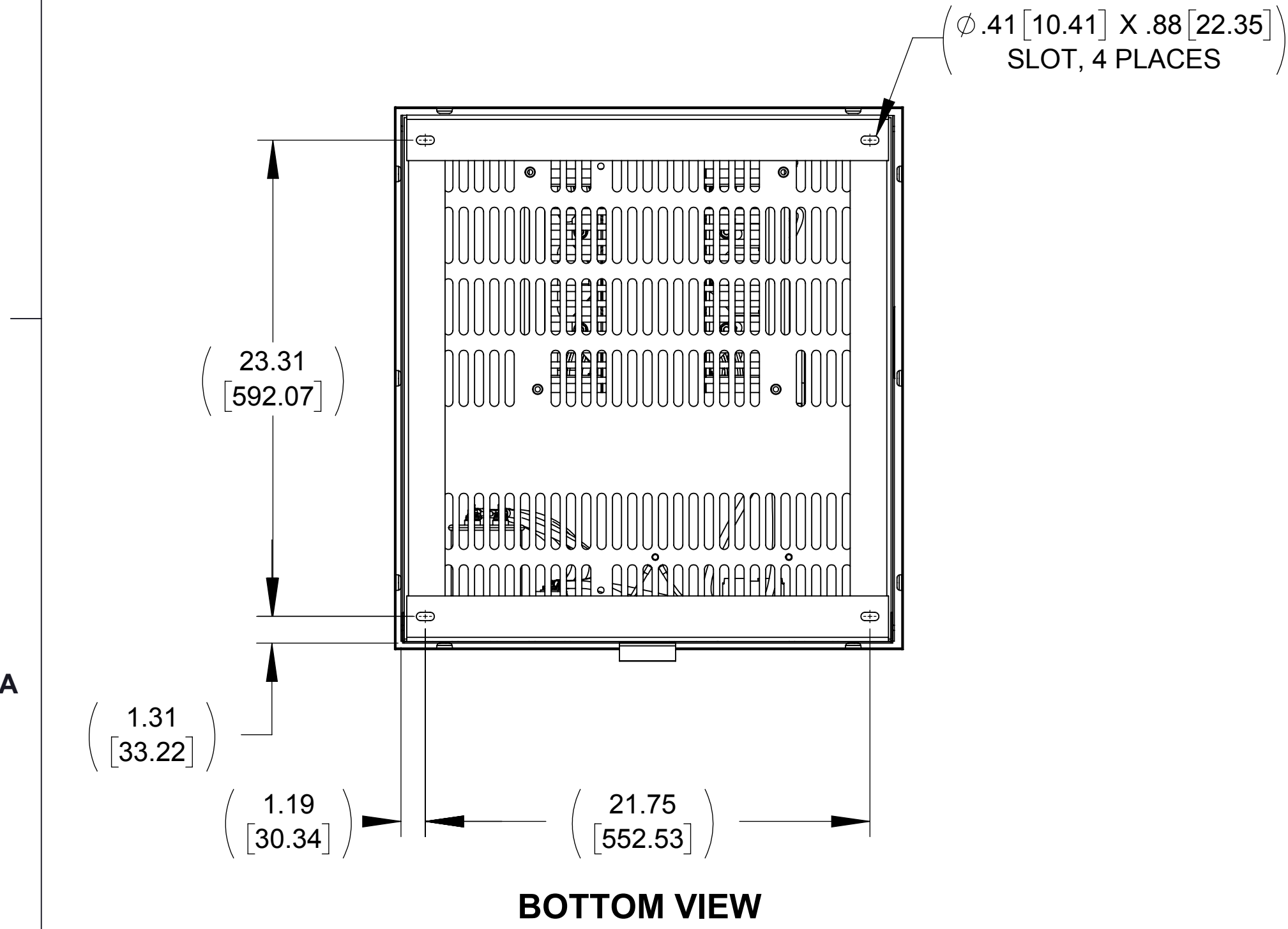
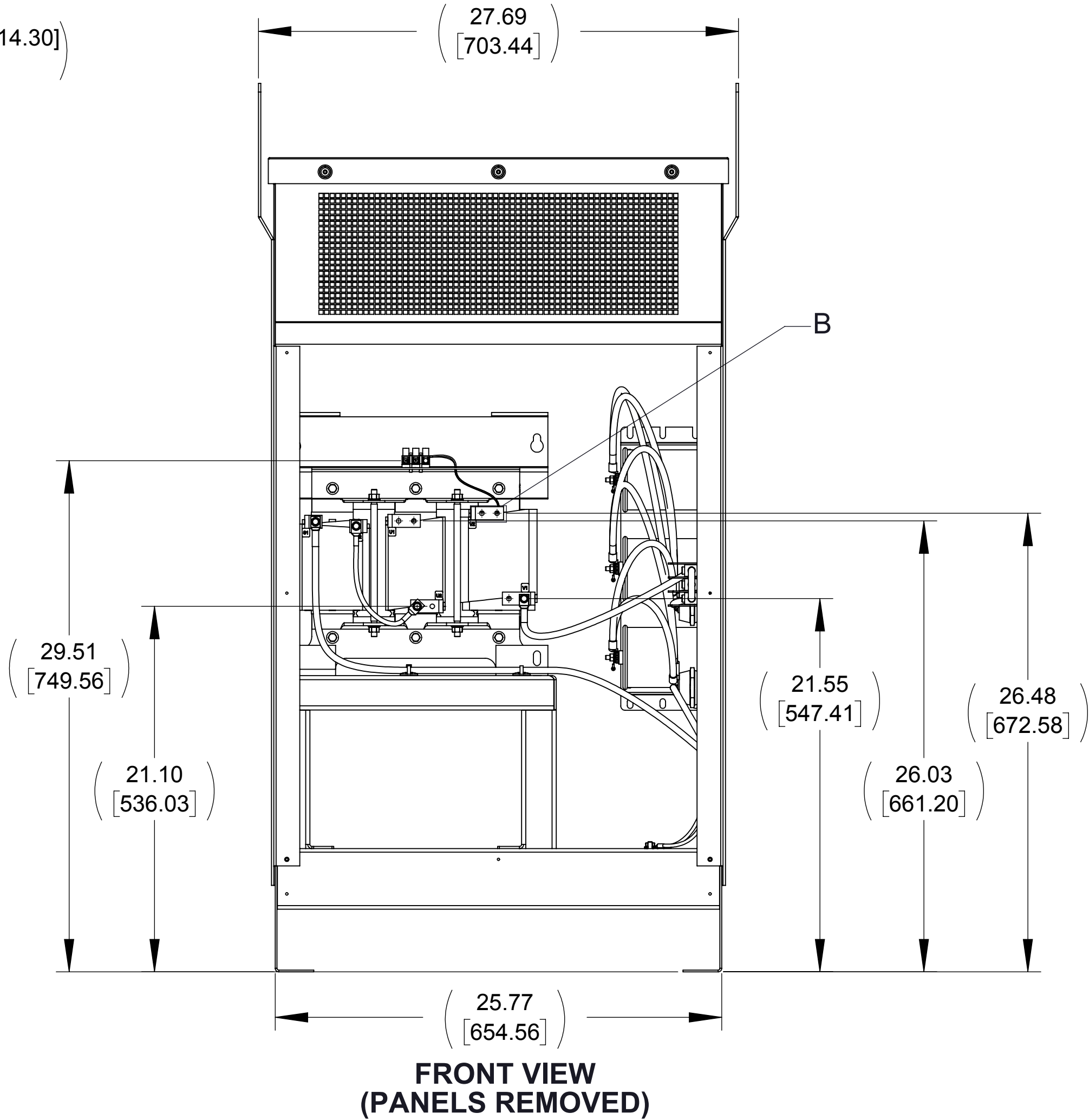
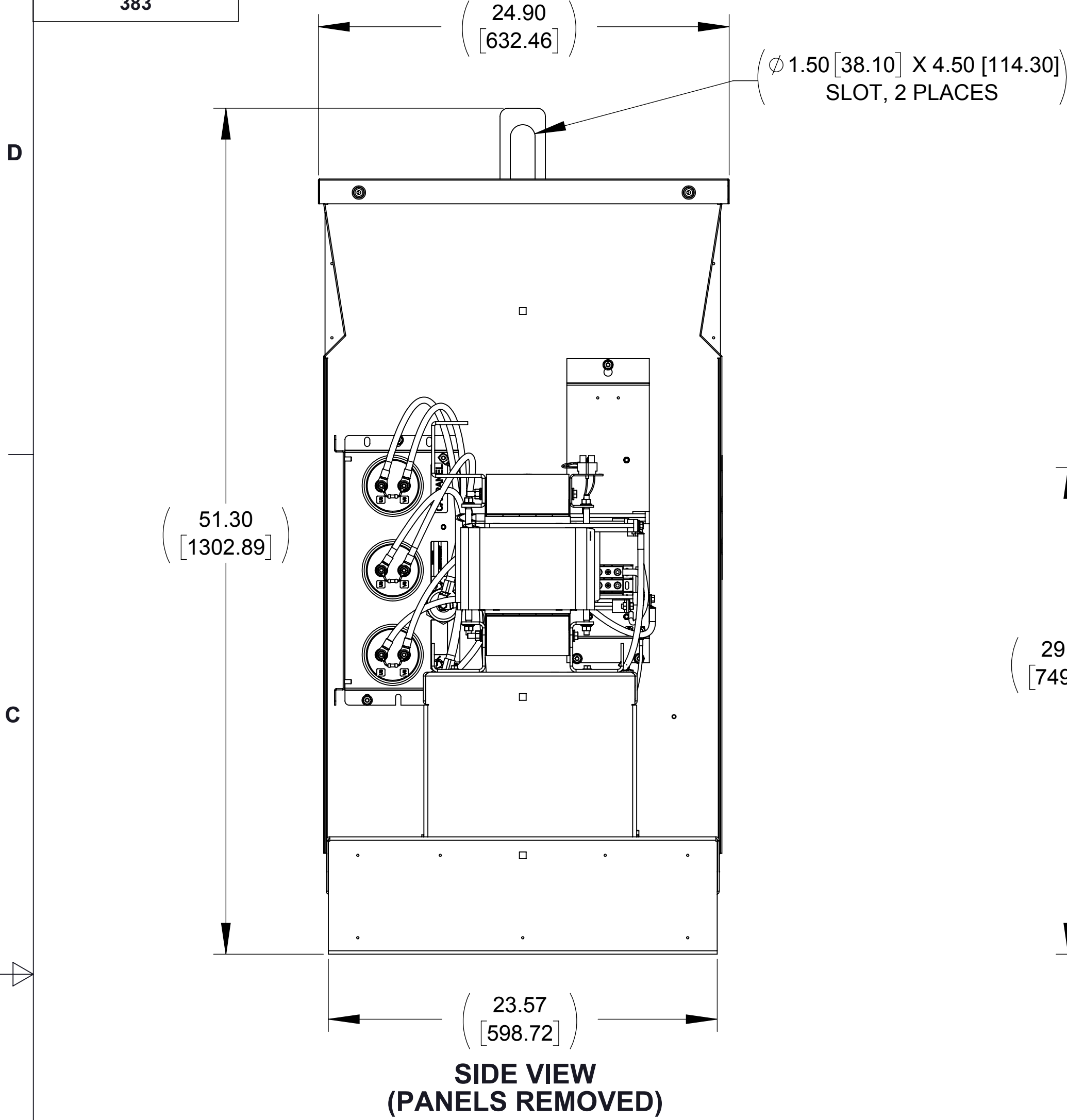


APPROX WEIGHT (LBS)
383

ECO No	DESCRIPTION	REV BY	DATE
M9952	REPLACED CAPPANEL-024 WITH CAPPANEL-024C	SL	01/31/17



- NOTES:**
1. TERMINAL SCREW TIGHTENING TORQUE: 16 IN/LBS, MAX.
 2. WIRE RANGE: 4 - 14 AWG.
 3. REFER TO USER MANUAL FOR COMPLETE INSTALLATION INSTRUCTIONS.

THE COMPONENT, PART OR ASSEMBLY DESCRIBED IN THIS DOCUMENT MUST COMPLY WITH THE EU(EUROPEAN UNION) DIRECTIVE RoHS2		MATERIAL		CONFIDENTIAL AND PROPRIETARY INFORMATION THIS DOCUMENT CONTAINS CONFIDENTIAL AND PROPRIETARY INFORMATION OF MTE CORPORATION AND MAY NOT BE USED, COPIED OR DISCLOSED TO OTHERS EXCEPT WITH THE AUTHORIZED WRITTEN PERMISSION OF MTE CORPORATION	
CONTAINS <0.1% OF ANY SVHC BY WEIGHT PER REACH REGULATION				DESCRIPTION	
UNLESS OTHERWISE SPECIFIED DIMENSIONS ARE IN INCHES [MM] TOLERANCES ARE: ANGLES: ± 1 ° 1 PLACE .X: ± .1 [2.5] 2 PLACE .XX: ± .03 [0.76] 3 PLACE .XXX: ± .010 [0.254]		MTE POWER QUALITY. SOLVED. N83 W13330 Leon Road Menomonee Falls, WI 53051 USA 800.455.4683 262.253.8200		MATRIX SINGLE PH FILTER 90A, 480V, 60HZ	
		DRAWN MN	DATE 03/26/15	SIZE D	DWG No. CD MSG0090D
		CHECKED JM	DATE 02/13/17	REV 02	
		APPROVED JM	DATE 02/13/17	SCALE 1:6	SHEET 1 OF 1