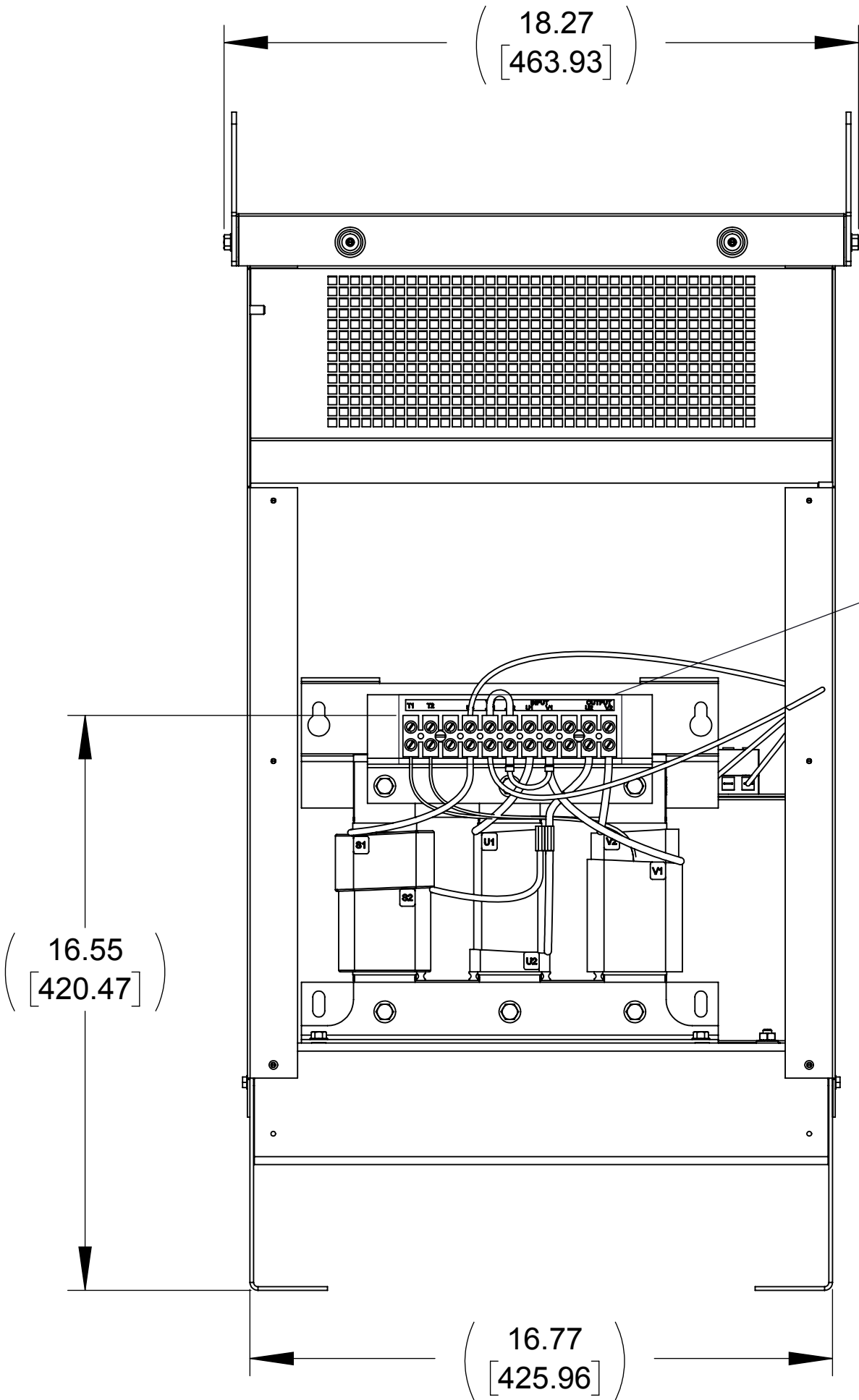
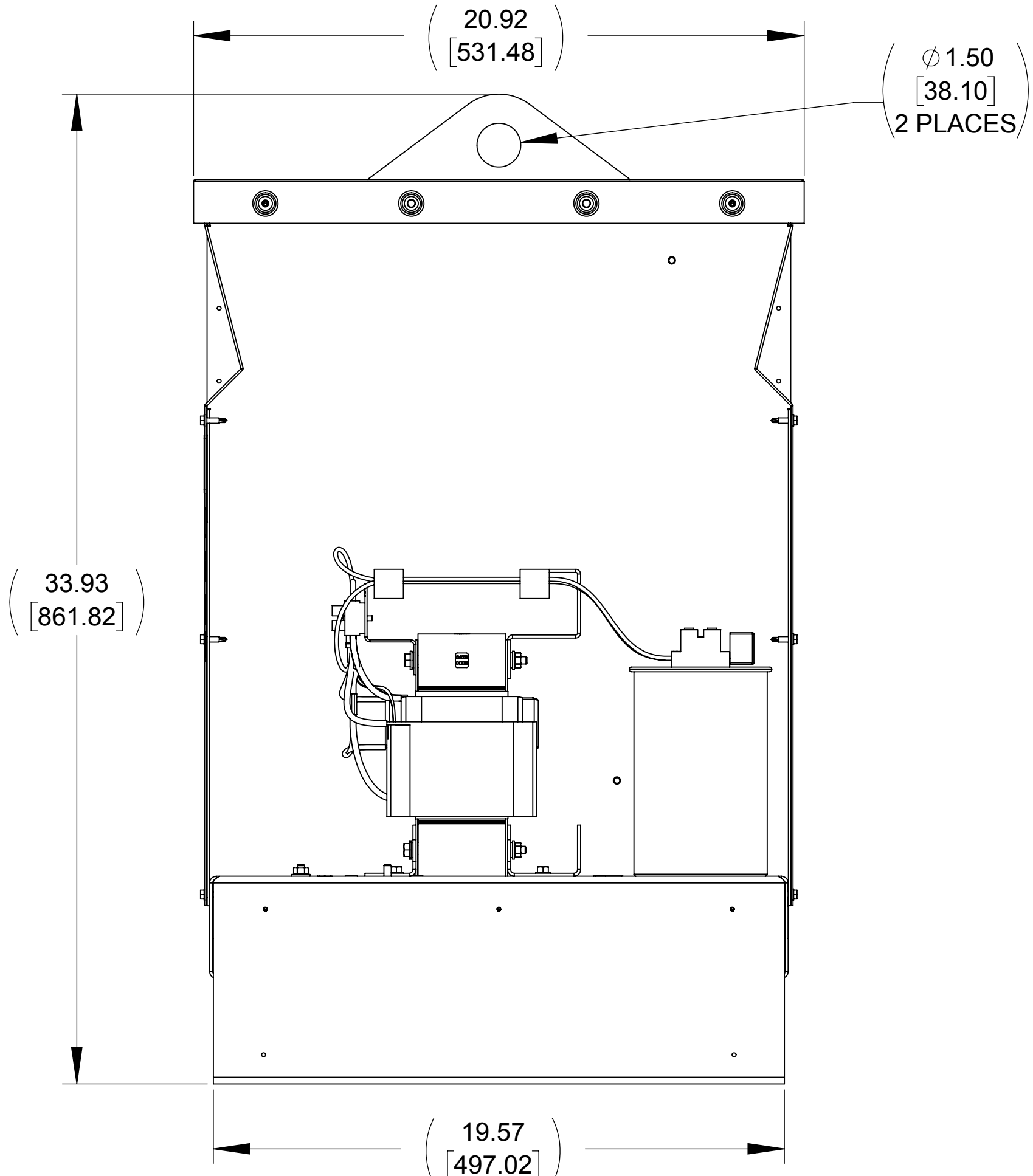


APPROX. WEIGHT (LBS)
149

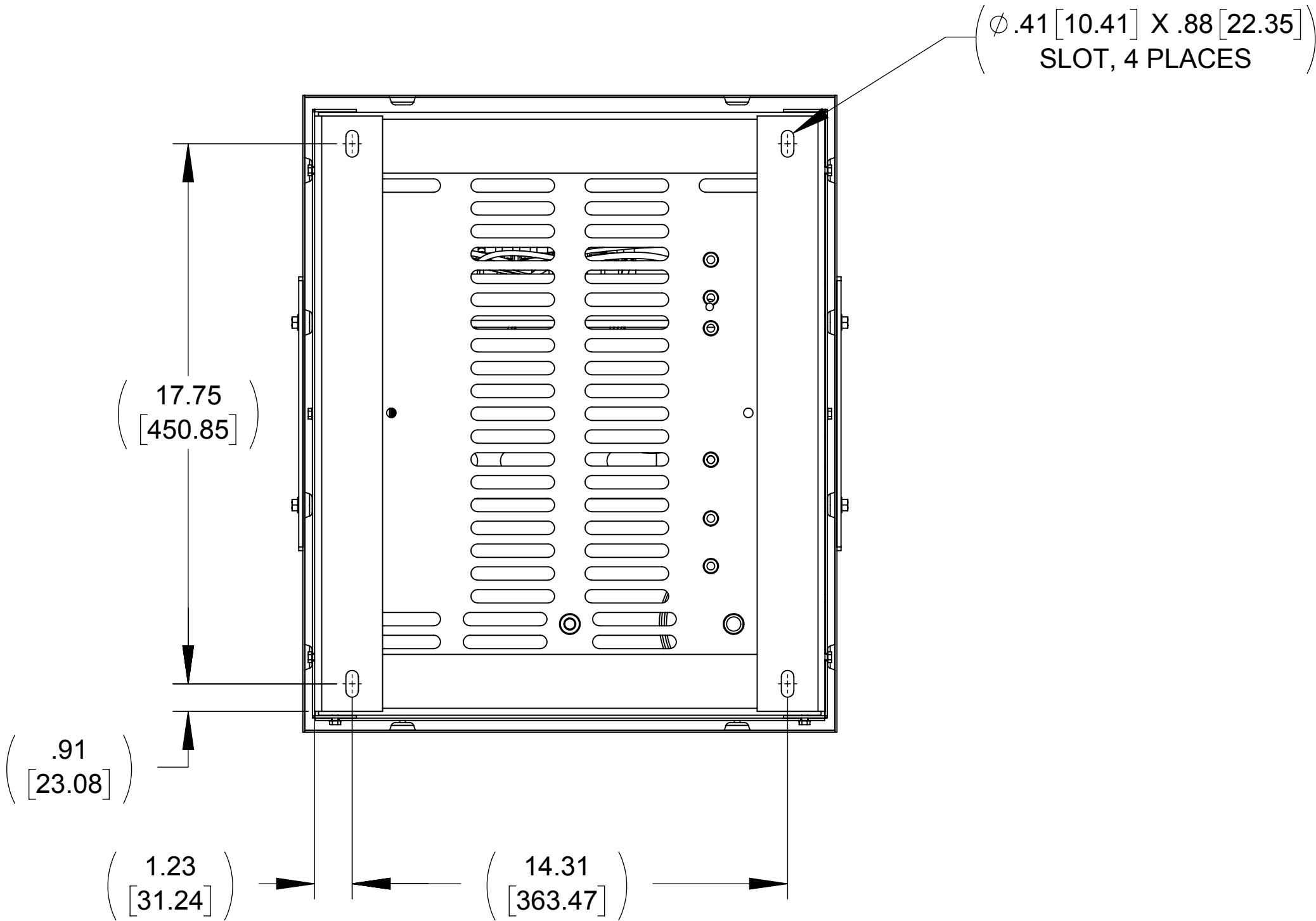
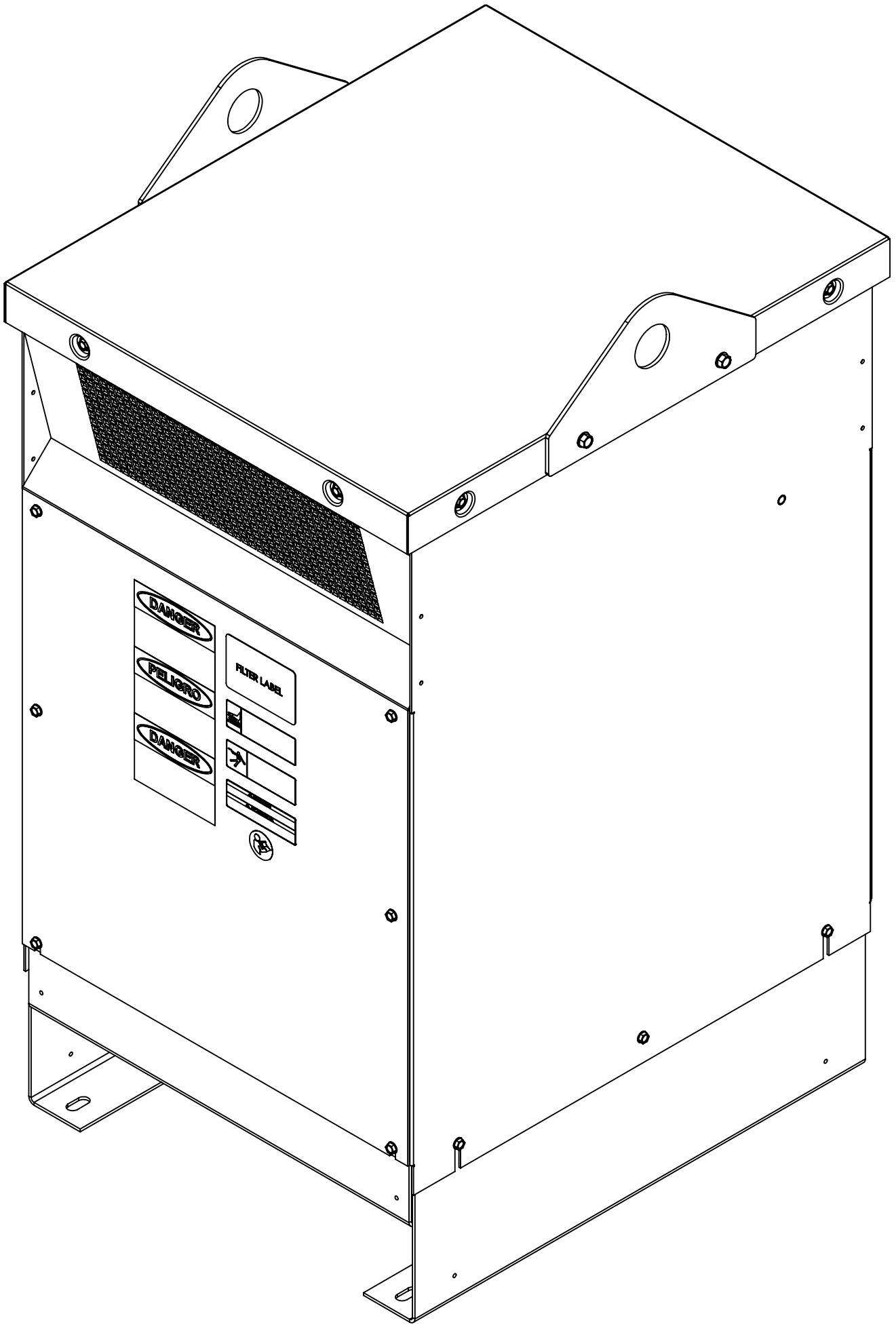
ECO No	DESCRIPTION	REV BY	DATE
M9700	UPDATE TO SHOW NEW LEADS	MN	10/14/15



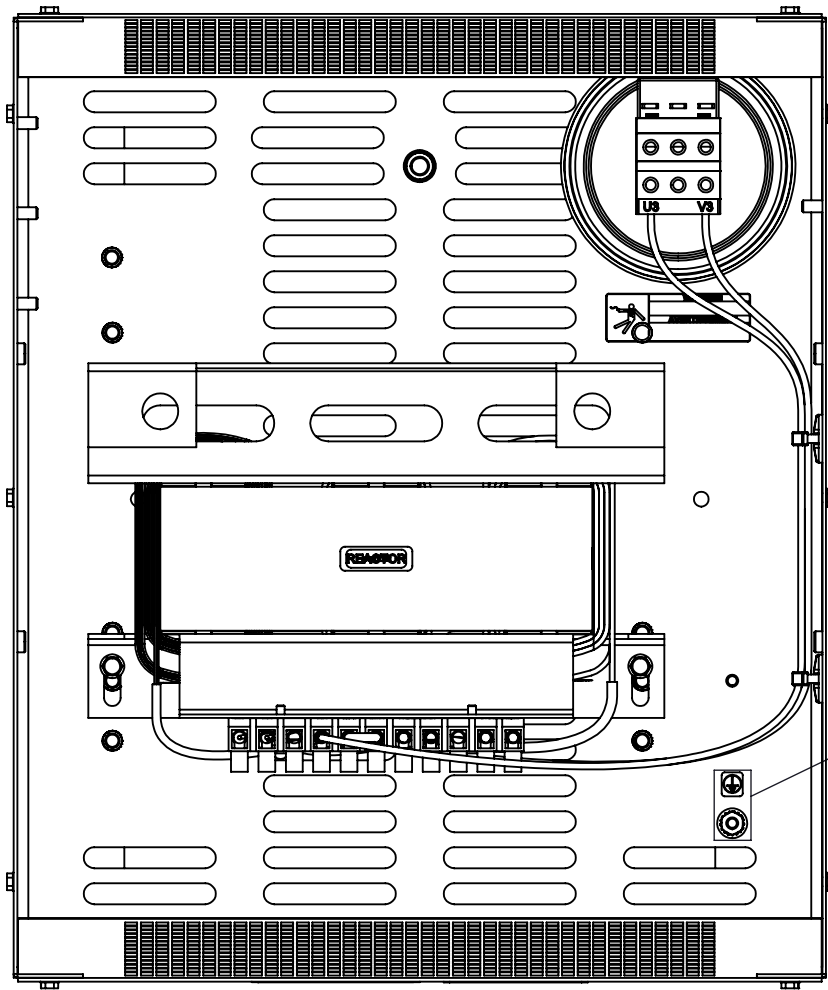
FRONT VIEW
(PANELS REMOVED)



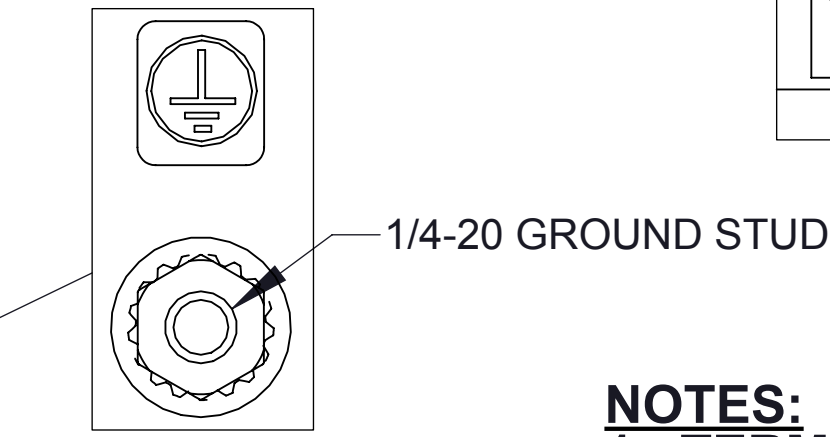
SIDE VIEW
(PANELS REMOVED)



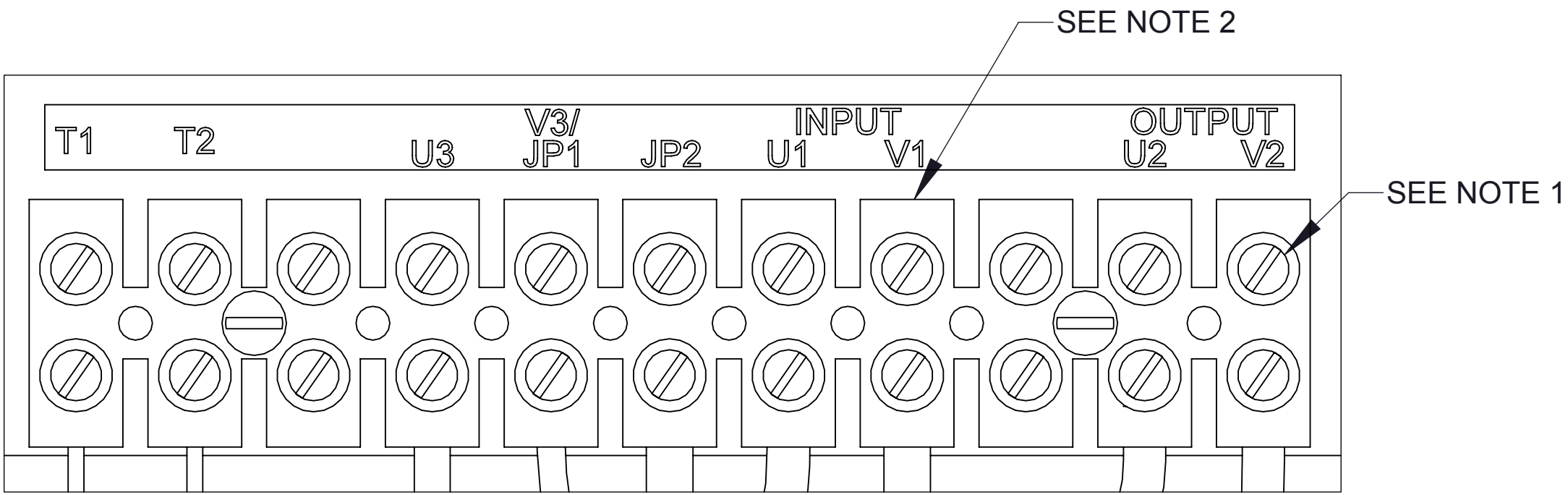
BOTTOM VIEW



TOP VIEW
(PANELS REMOVED)



GROUND STUD
DETAIL VIEW



DETAIL A
CUSTOMER CONNECTION
DETAIL VIEW

- NOTES:**
1. **TERMINAL SCREW TIGHTENING TORQUE: 16 IN/LBS.**
2. **WIRE RANGE: 4-14 AWG.**
3. **REFER TO USER MANUAL FOR COMPLETE INSTALLATION INSTRUCTIONS.**

THE COMPONENT, PART OR ASSEMBLY DESCRIBED IN THIS DOCUMENT MUST COMPLY WITH THE EU(EUROPEAN UNION) DIRECTIVE RoHS2		MATERIAL		CONFIDENTIAL AND PROPRIETARY INFORMATION THIS DOCUMENT CONTAINS CONFIDENTIAL AND PROPRIETARY INFORMATION OF MTE CORPORATION AND MAY NOT BE USED, COPIED OR DISCLOSED TO OTHERS EXCEPT WITH THE AUTHORIZED WRITTEN PERMISSION OF MTE CORPORATION	
CONTAINS <0.1% OF ANY SVHC BY WEIGHT PER REACH REGULATION				DESCRIPTION	
UNLESS OTHERWISE SPECIFIED DIMENSIONS ARE IN INCHES [MM] TOLERANCES ARE: ANGLES: ± 1 ° 1 PLACE .X: ± .1 [2.5] 2 PLACE .XX: ± .03 [0.76] 3 PLACE .XXX: ± .010 [0.254]		MTE AN SL INDUSTRIES COMPANY N83 W13330 Leon Road Menomonee Falls, WI 53051 USA 800.455.4683 262.253.8200		MATRIX SINGLE PH FILTER 24A, 480V, 60HZ NEMA 1/2 ENCL	
		DRAWN MN	DATE 01/02/15	SIZE D	DWG No. CD MSG0024D
		CHECKED TM	DATE 10/20/15	REV 01	
		APPROVED TM	DATE 10/20/15	SCALE 1:4	SHEET 1 OF 1