

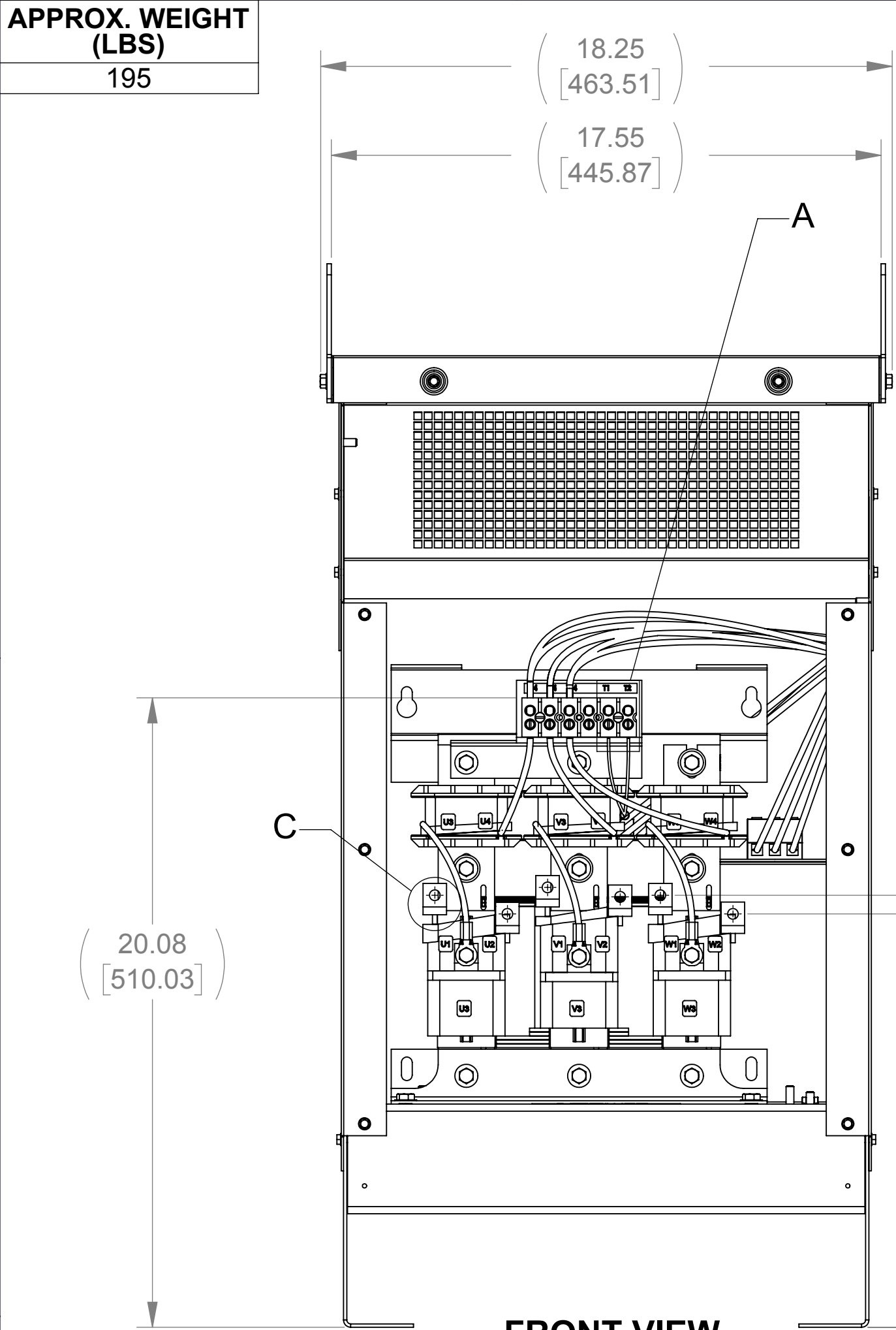
APPROX. WEIGHT
(LBS)
195

D

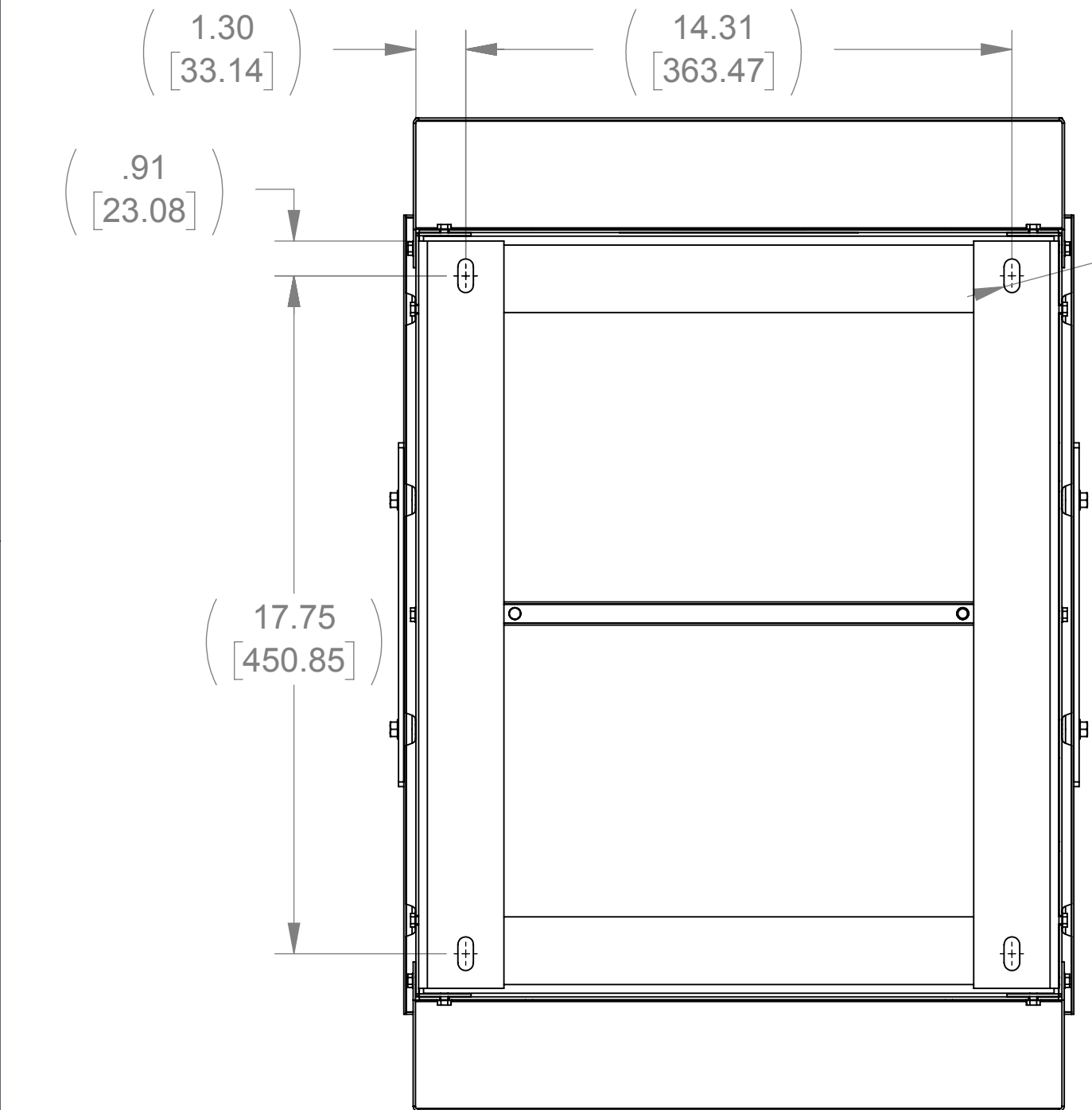
C

B

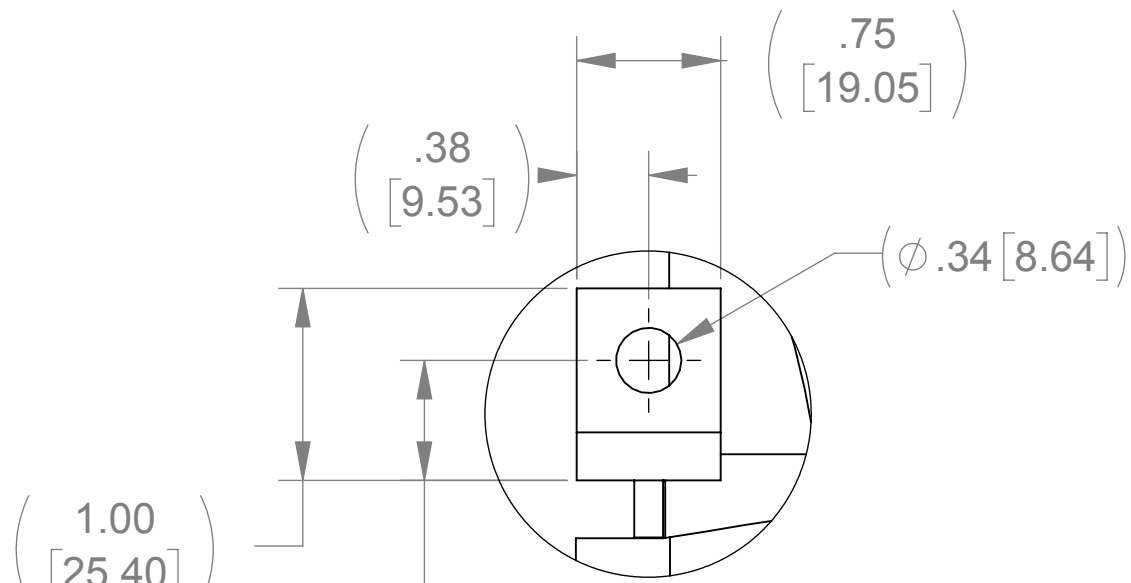
A



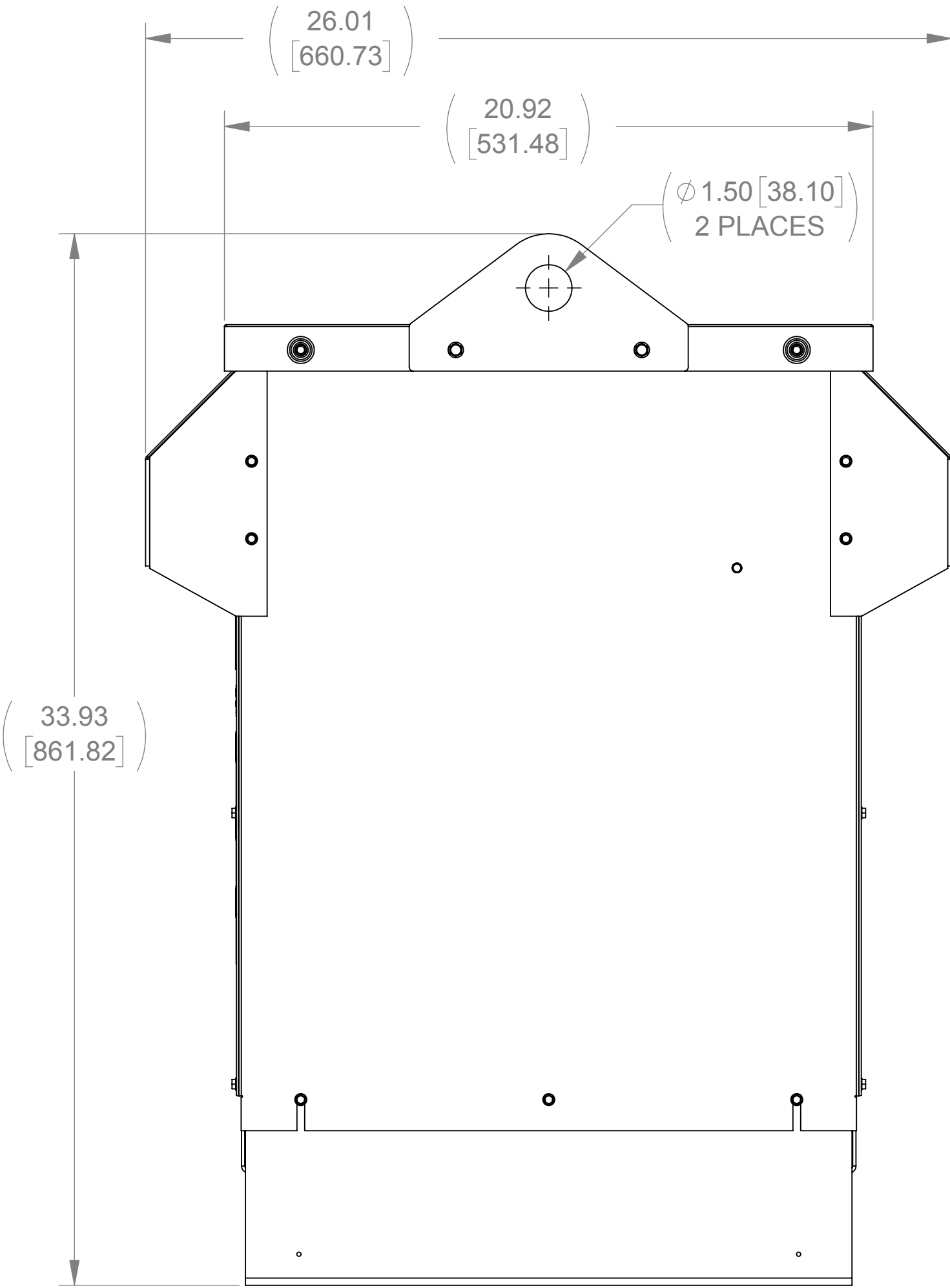
FRONT VIEW
(PANEL REMOVED)



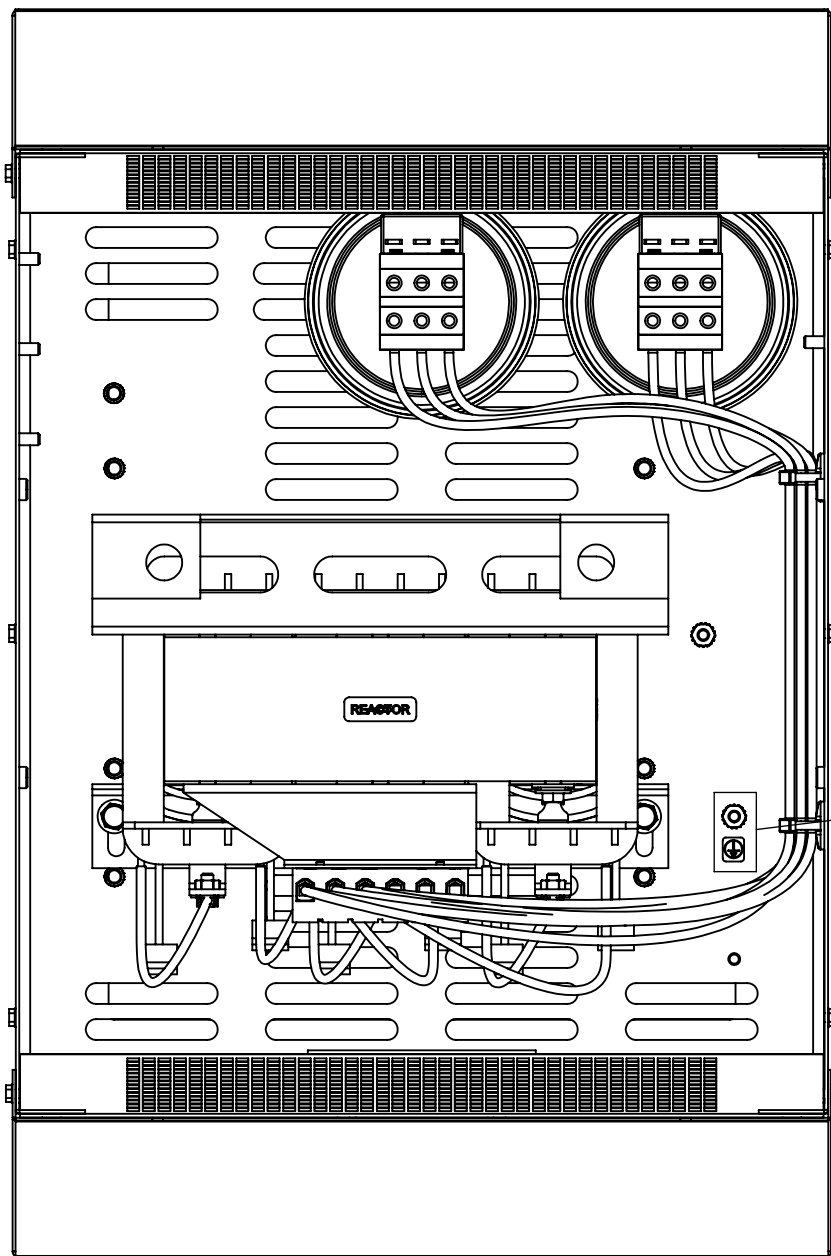
BOTTOM VIEW



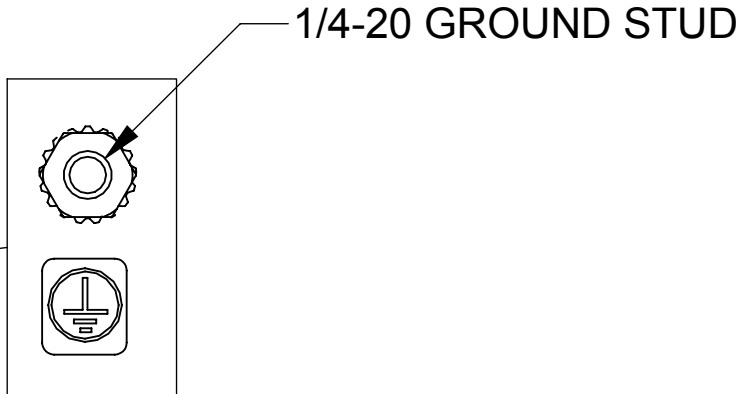
DETAIL C
(6 PLACES)



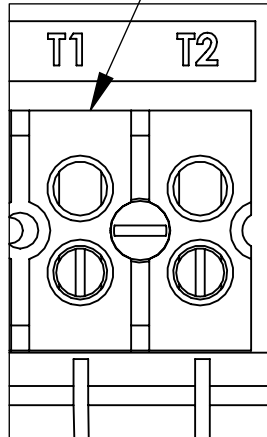
SIDE VIEW
(PANELS REMOVED)



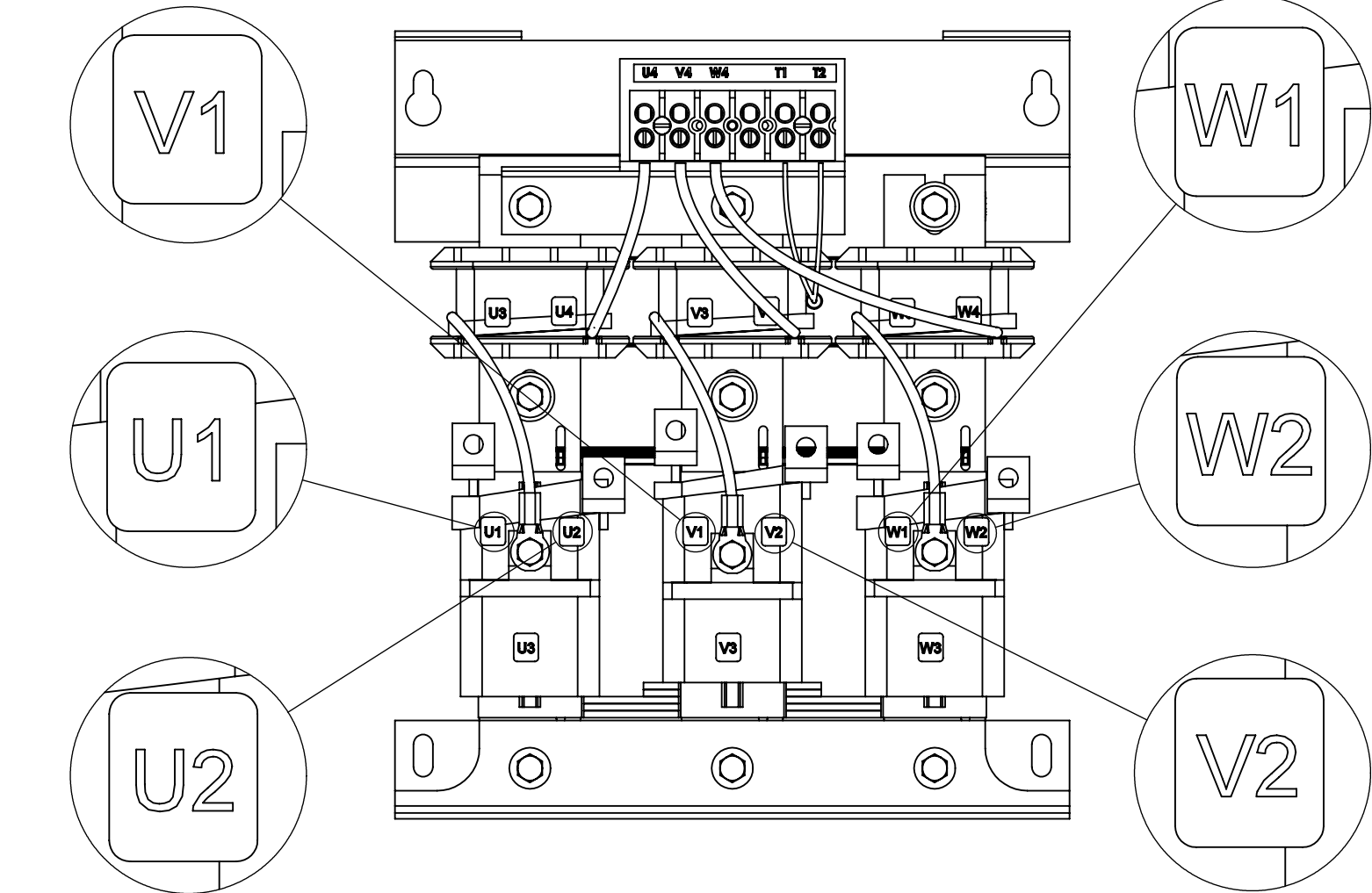
TOP VIEW
(PANELS REMOVED)



1/4-20 GROUND STUD

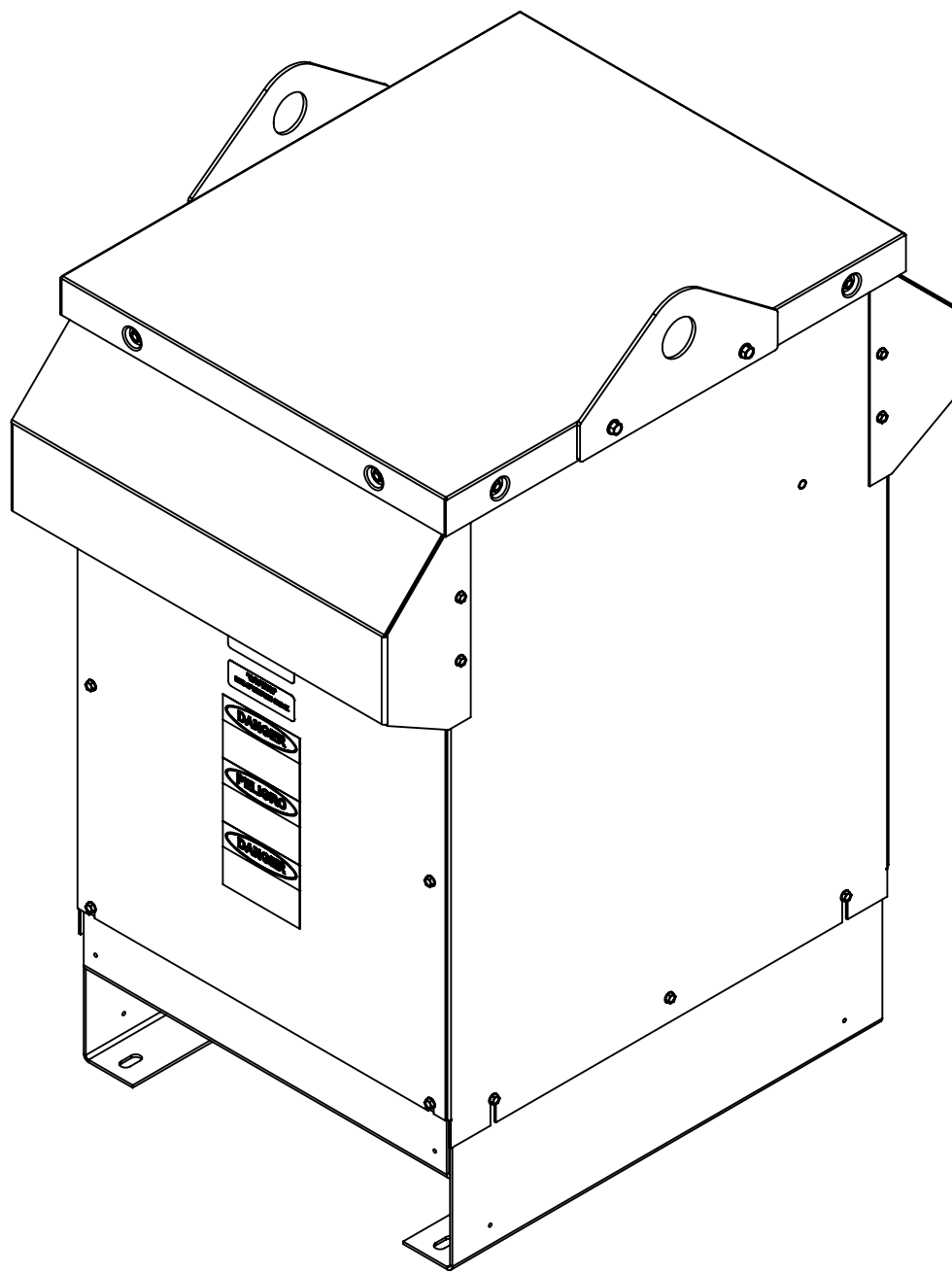


DETAIL A
CUSTOMER CONNECTION
(THERMAL)




CUSTOMER CONNECTION
DETAIL VIEW

ECO No	DESCRIPTION	REV BY	DATE



NOTES:

1. TERMINAL SCREW TIGHTENING TORQUE: 16 IN/LBS
2. WIRE RANGE: 4-14 AWG.

THE COMPONENT, PART OR ASSEMBLY DESCRIBED IN THIS DOCUMENT MUST COMPLY WITH THE EU(EUROPEAN UNION) DIRECTIVE RoHS2		MATERIAL		CONFIDENTIAL AND PROPRIETARY INFORMATION THIS DOCUMENT CONTAINS CONFIDENTIAL AND PROPRIETARY INFORMATION OF MTE CORPORATION AND MAY NOT BE USED, COPIED OR DISCLOSED TO OTHERS EXCEPT WITH THE AUTHORIZED WRITTEN PERMISSION OF MTE CORPORATION					
CONTAINS <0.1% OF ANY SVHC BY WEIGHT PER REACH REGULATION				DESCRIPTION					
<div>UNLESS OTHERWISE SPECIFIED DIMENSIONS ARE IN INCHES [MM] TOLERANCES ARE:</div> <div>ANGLES: ± 1 °</div> <div>1 PLACE .X: ± .1 [2.5]</div> <div>2 PLACE .XX: ± .03 [0.76]</div> <div>3 PLACE .XXX: ± .010 [0.254]</div>		<div></div> <div>N83 W13330 Leon Road Menomonee Falls, WI 53051 USA 800.455.4683 262.253.8200</div>		<div>DRAWN</div> <div>KV</div> <div>CHECKED</div> <div>KV</div> <div>APPROVED</div> <div>JG</div>		<div>DATE</div> <div>08/21/18</div> <div>DATE</div> <div>10/09/18</div> <div>DATE</div> <div>10/10/18</div>		MATRIX AP 103A 240V 60Hz FILTER, NEMA 3R ENCL	
				SIZE	DWG No.	REV			
				D	CD MAPW0103A	00			
				SCALE	1:4	SHEET 1 OF 1			