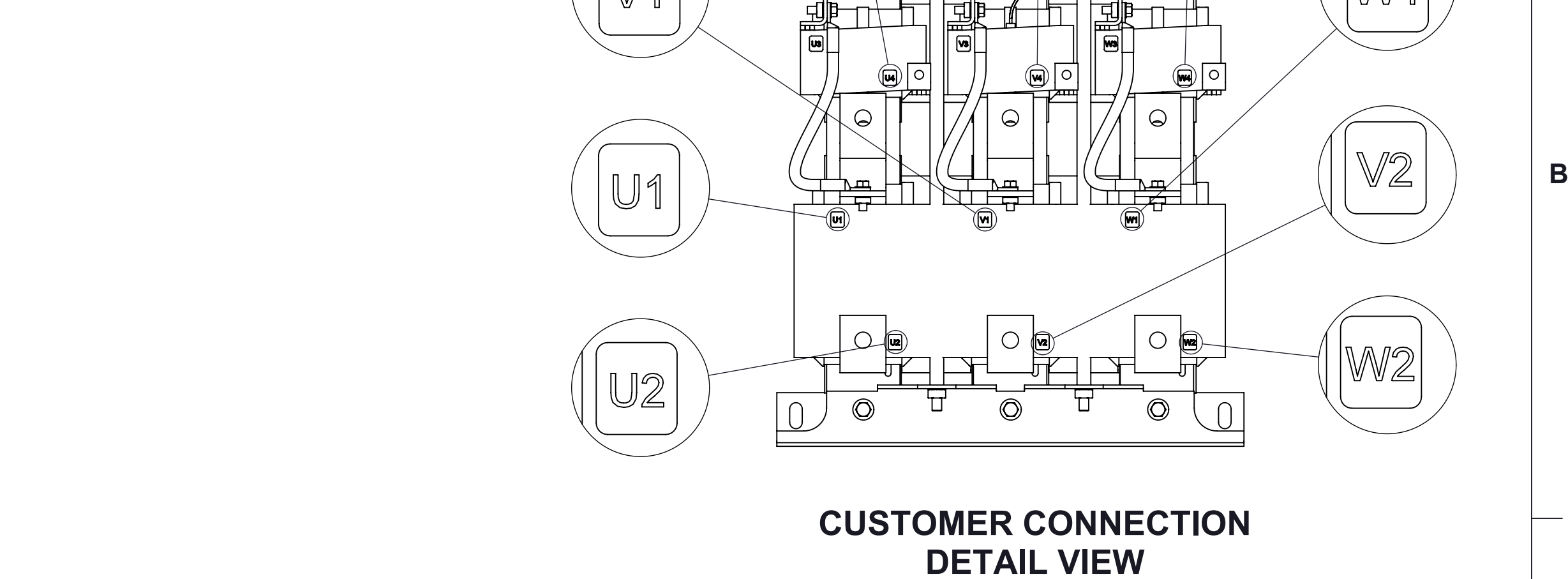
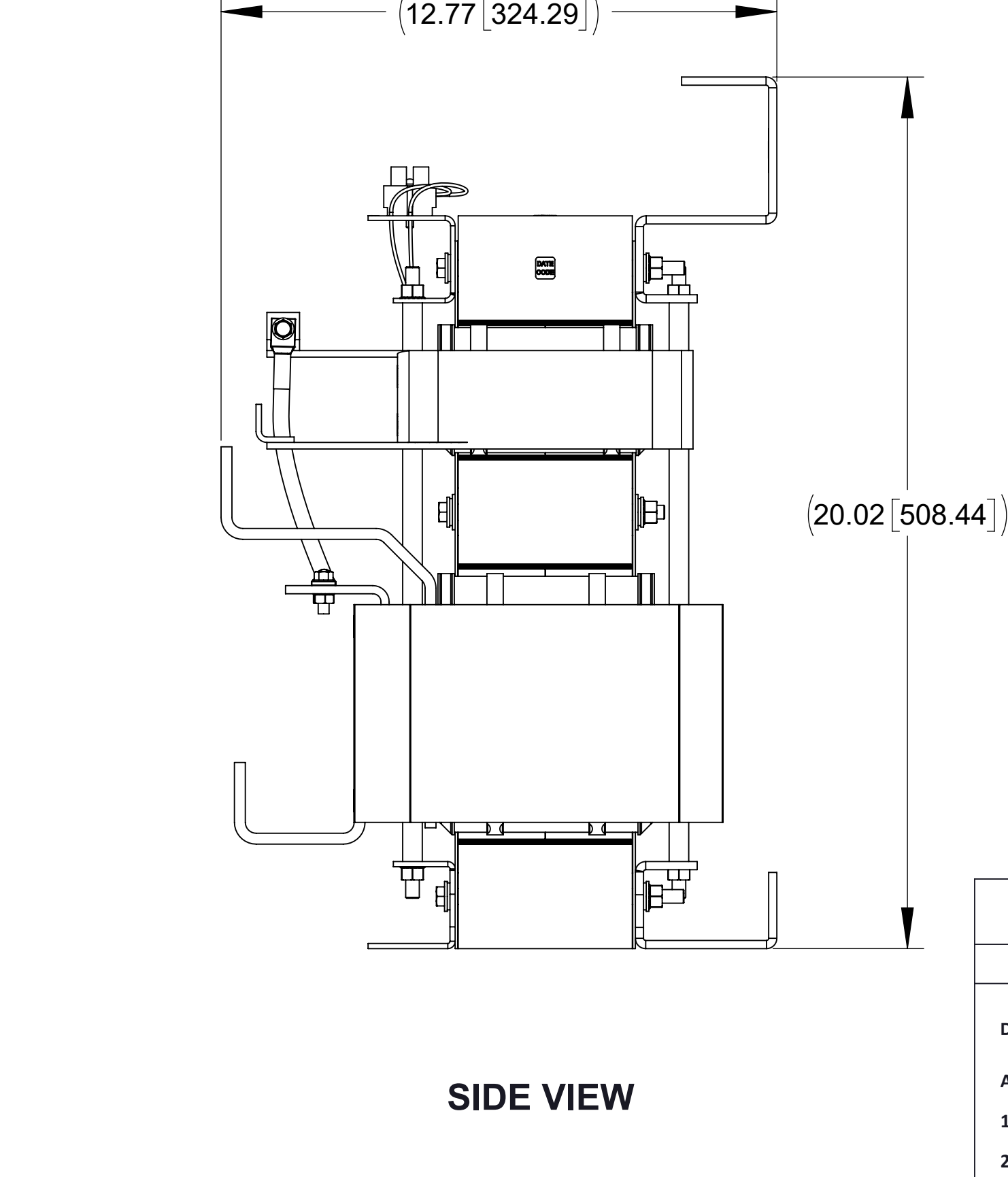
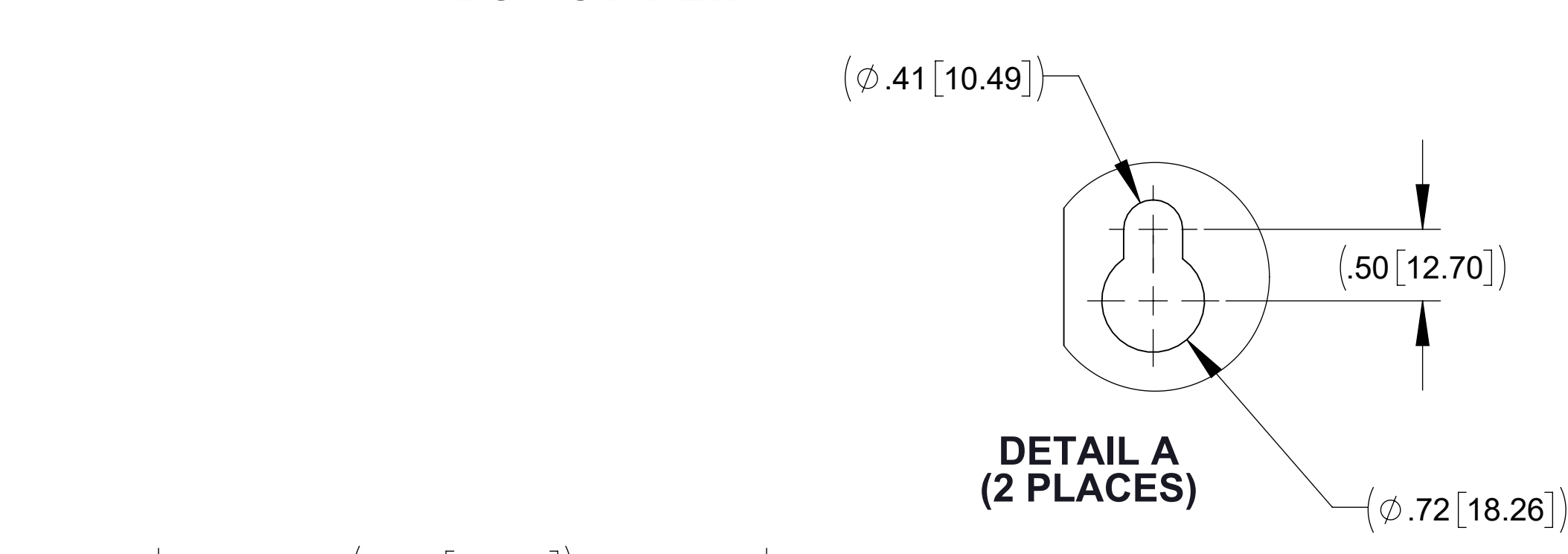
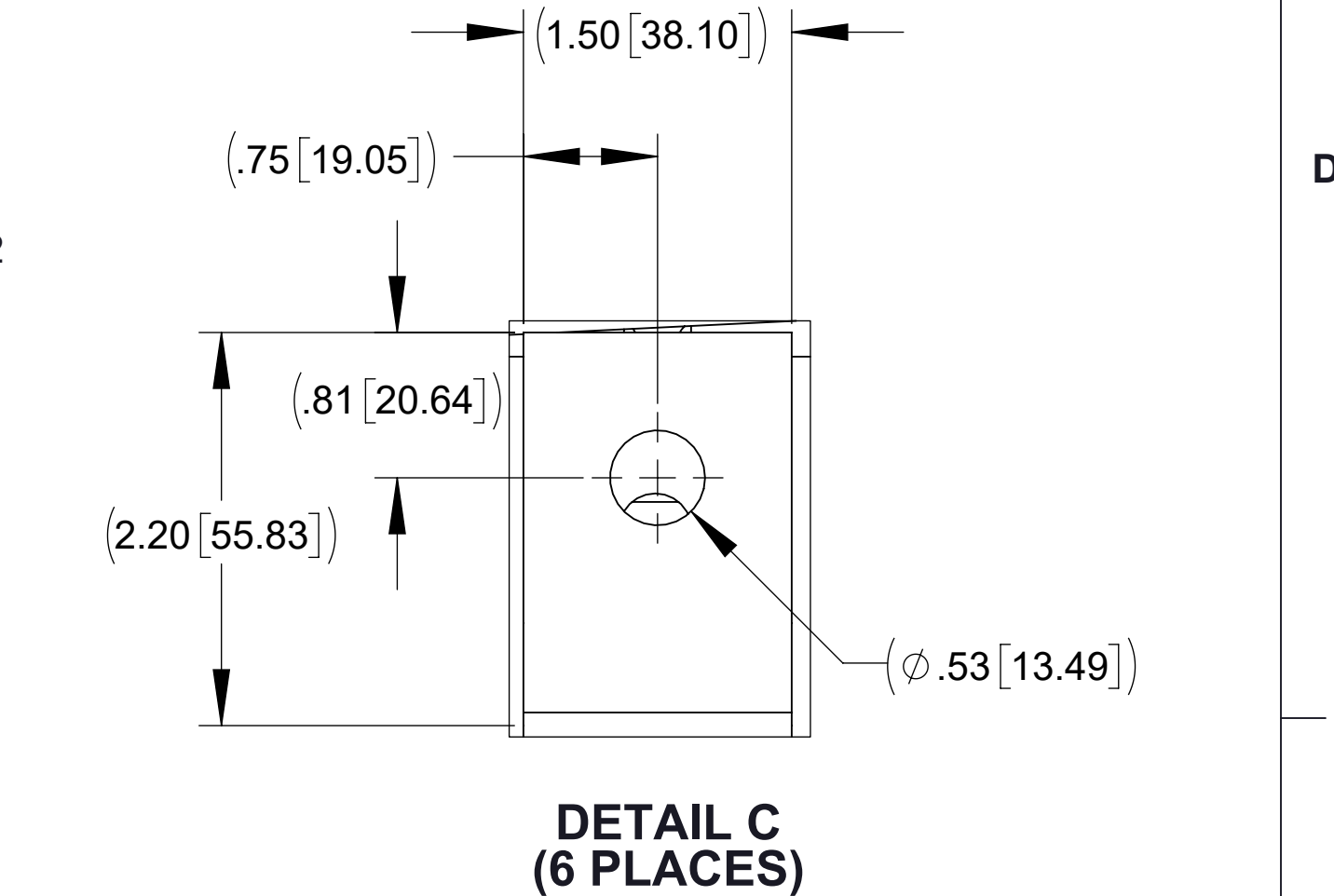



ECO No	DESCRIPTION	REV BY	DATE



- NOTES:**
- 1. FILTER INCLUDES CAPPANEL-155 (QTY. 1).**
 - 2. TERMINAL SCREW TIGHTENING TORQUE: 16 IN/LBS**
 - 3. WIRE RANGE: 4-14 AWG.**

THE COMPONENT, PART OR ASSEMBLY DESCRIBED IN THIS DOCUMENT MUST COMPLY WITH THE EU(EUROPEAN UNION) DIRECTIVE RoHS2		MATERIAL		CONFIDENTIAL AND PROPRIETARY INFORMATION THIS DOCUMENT CONTAINS CONFIDENTIAL AND PROPRIETARY INFORMATION OF MTE CORPORATION AND MAY NOT BE USED, COPIED OR DISCLOSED TO OTHERS EXCEPT WITH THE AUTHORIZED WRITTEN PERMISSION OF MTE CORPORATION			
CONTAINS <0.1% OF ANY SVHC BY WEIGHT PER REACH REGULATION				DESCRIPTION			
UNLESS OTHERWISE SPECIFIED DIMENSIONS ARE IN INCHES [MM] TOLERANCES ARE: ANGLES: $\pm 1^\circ$ 1 PLACE .X: $\pm .1$ [2.5] 2 PLACE .XX: $\pm .03$ [0.76] 3 PLACE .XXX: $\pm .010$ [0.254]				MATRIX AP 403A 240V 60Hz OPEN PANEL			
N83 W13330 Leon Road Menomonee Falls, WI 53051 USA 800.455-4683 262.253.8200		DRAWN KV	DATE 04/20/18	SIZE D		DWG No. CD MAPP0403A	REV 00
		CHECKED KV	DATE 04/20/18	SCALE 1:3		SHEET 1 OF 1	
		APPROVED JG	DATE 10/11/18				