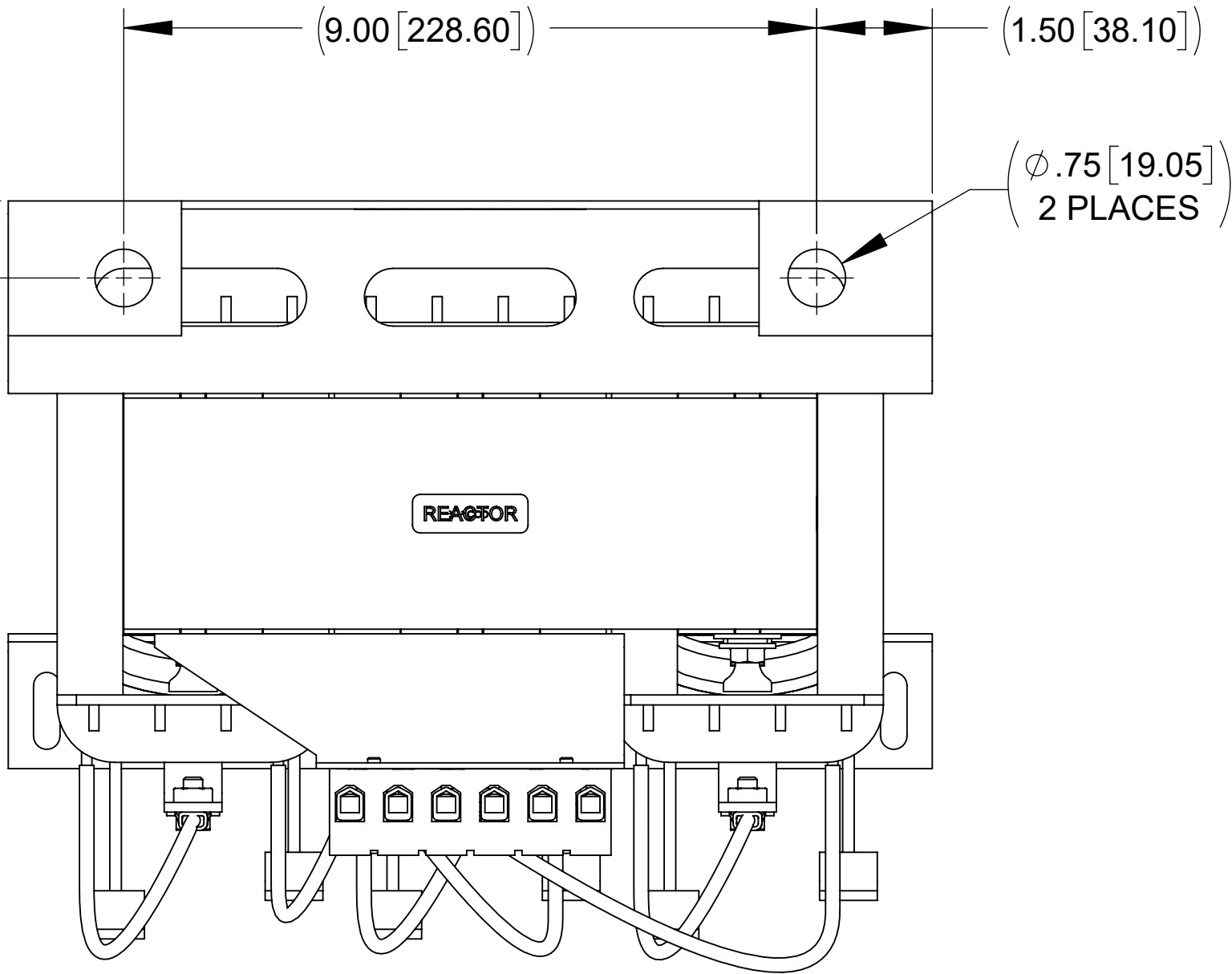


APPROX. WEIGHT
(LBS)
111

ECO No	DESCRIPTION	REV BY	DATE

D

(1.00 [25.40])

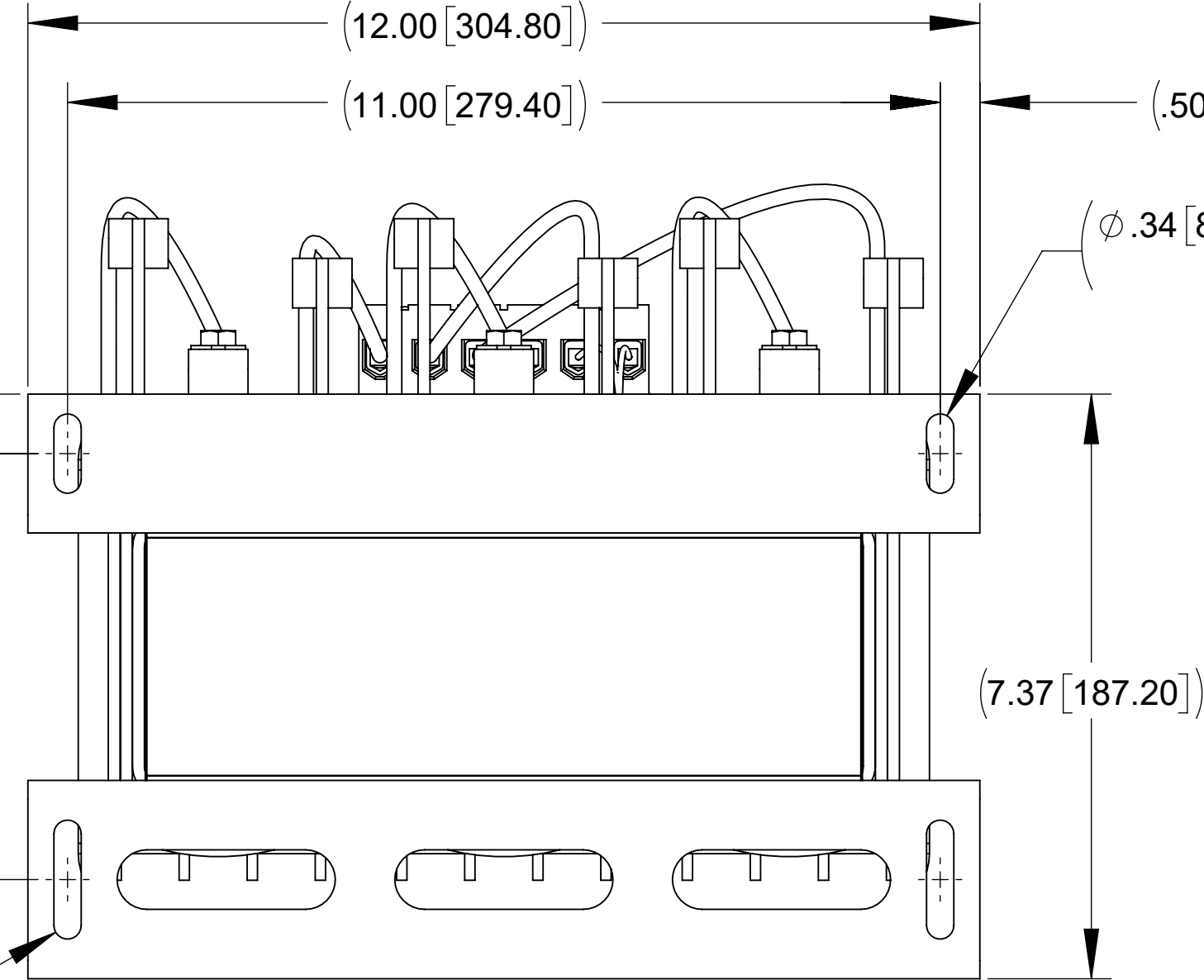


TOP VIEW

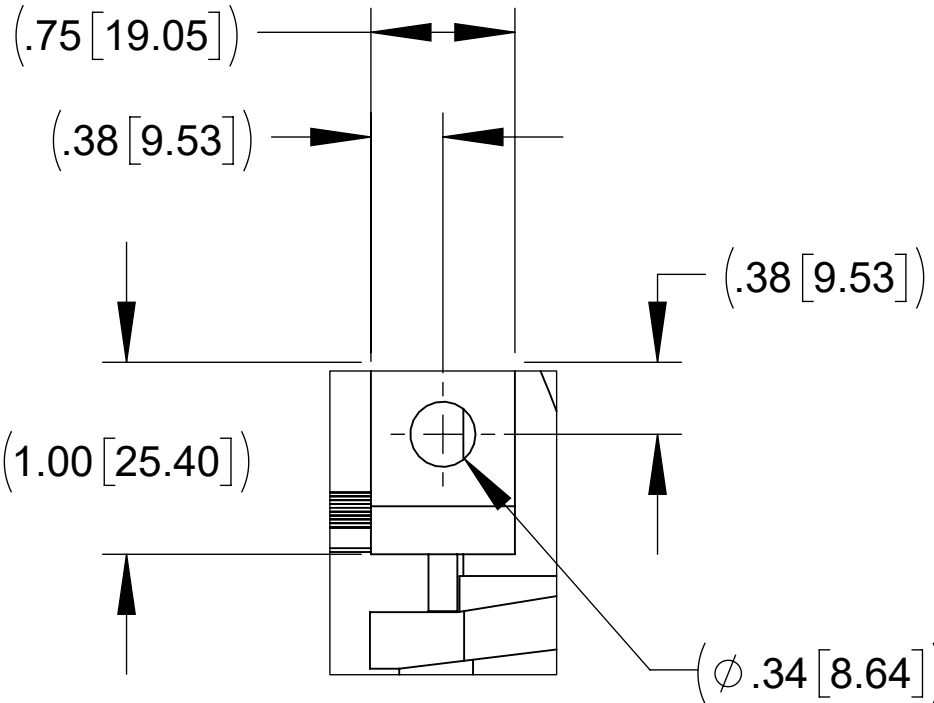
(.75 [19.05])

(5.37 [136.40])

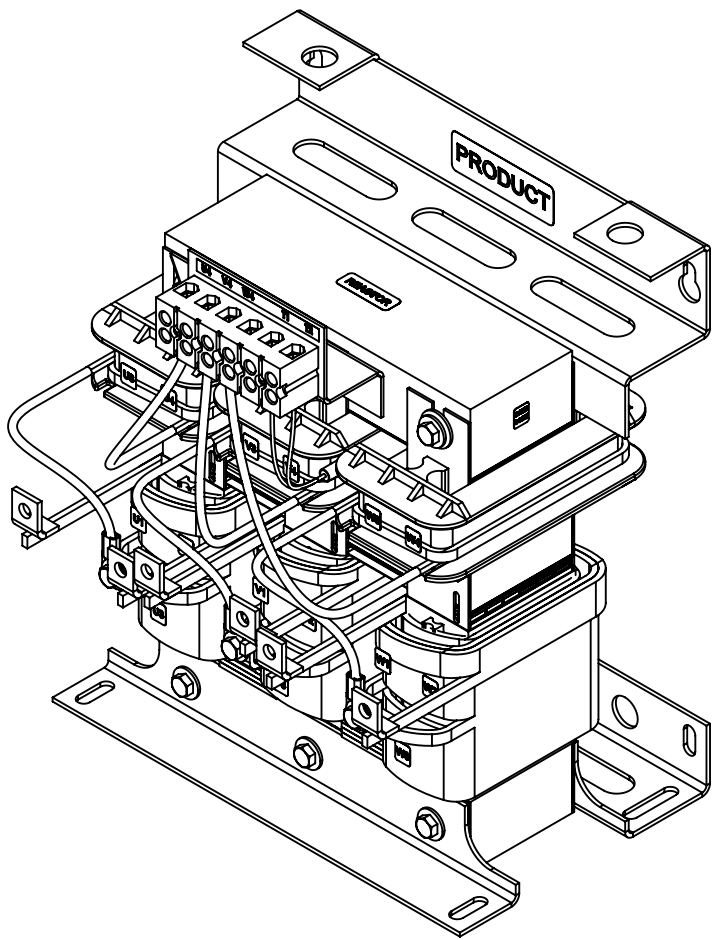
($\phi .34 [8.74]$ X 1.50 [38.10])
2 PLACES



BOTTOM VIEW

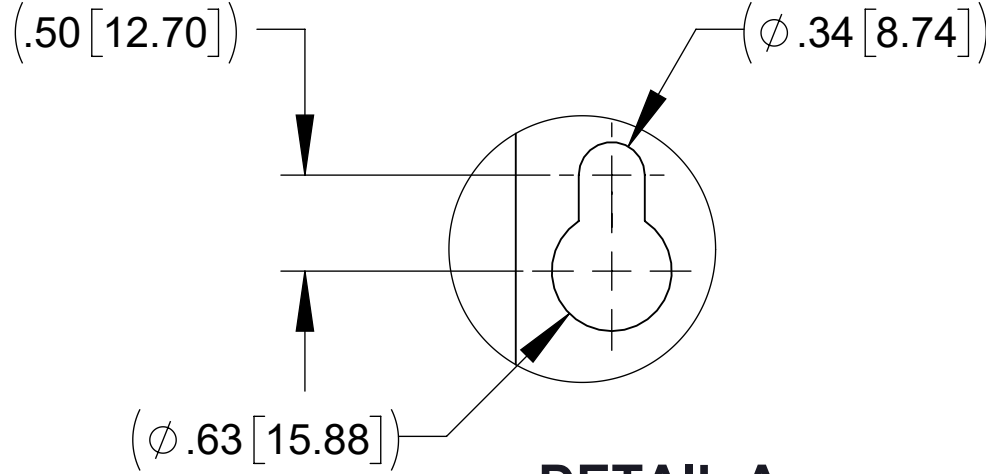


DETAIL B
(6 PLACES)

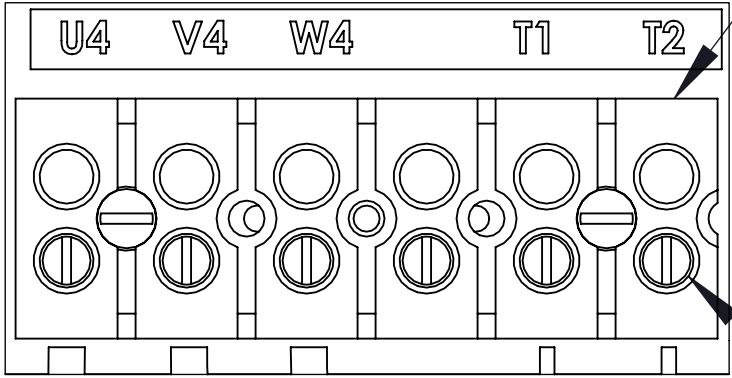


D

C



DETAIL A
(2 PLACES)

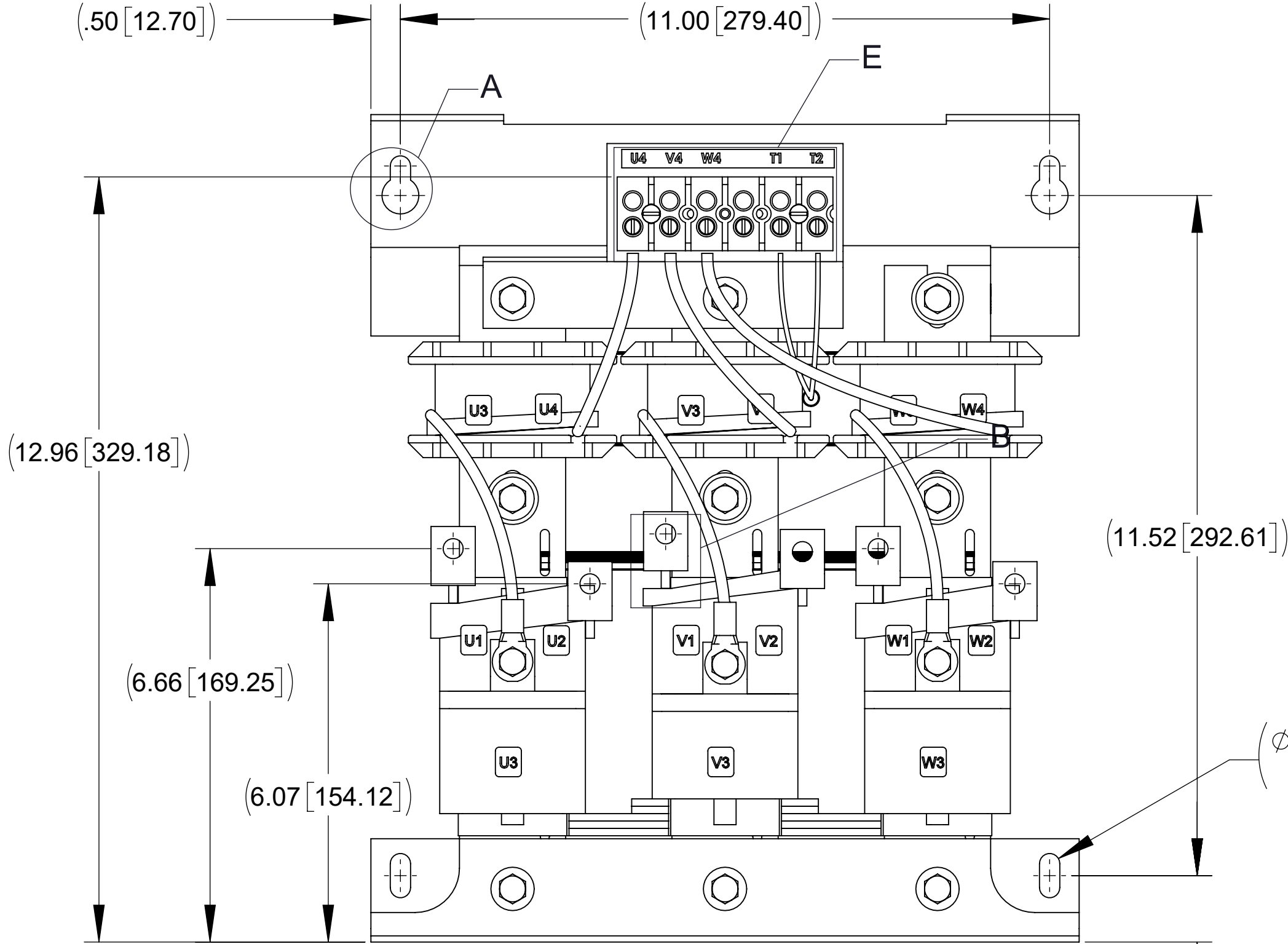


DETAIL E
CUSTOMER CONNECTION
(THERMAL)

SEE NOTE 3

SEE NOTE 2

B

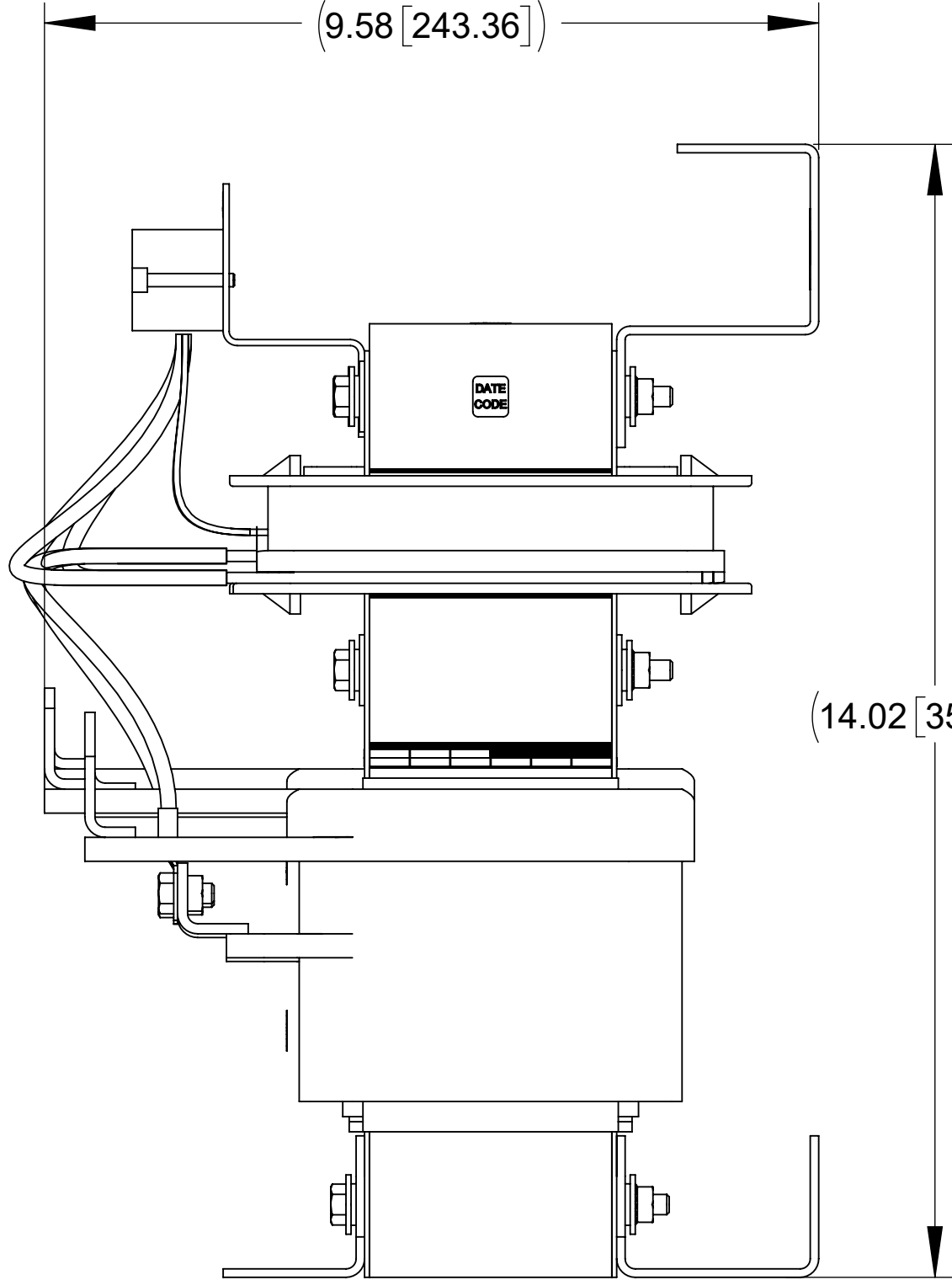


FRONT VIEW

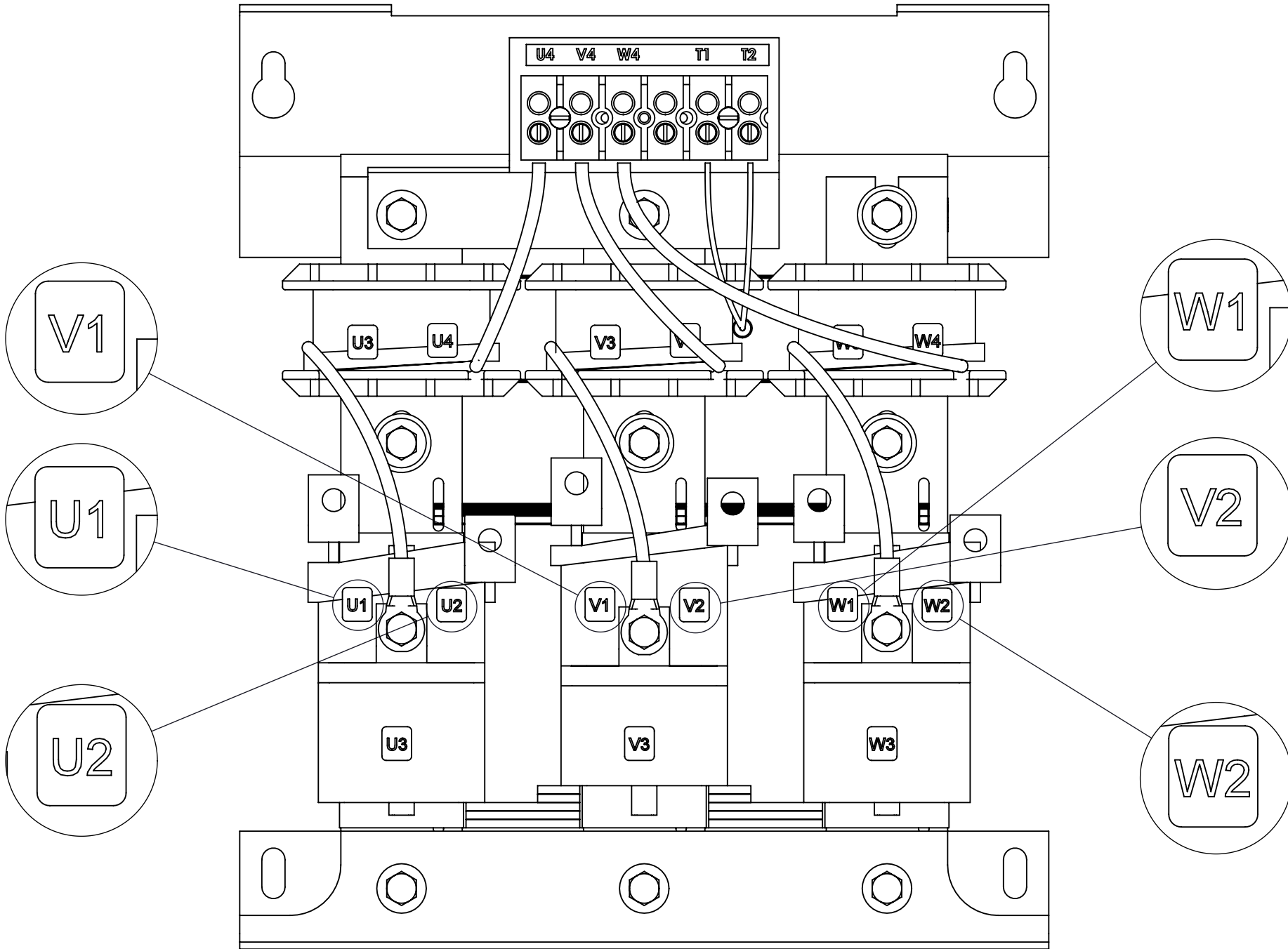
(11.52 [292.61])

($\phi .34 [8.74]$ X .65 [21.59])
2 PLACES

(1.13 [28.58])



SIDE VIEW



CUSTOMER CONNECTION
DETAIL VIEW

NOTES:

1. FILTER REQUIRES: CAP-358TP (QTY. 1), CAP-359TP (QTY. 1)
2. TERMINAL SCREW TIGHTENING TORQUE: 16 IN/LBS
3. WIRE RANGE: 4-14 AWG.

THE COMPONENT, PART OR ASSEMBLY DESCRIBED IN THIS DOCUMENT MUST COMPLY WITH THE EU(EUROPEAN UNION) DIRECTIVE RoHS2		MATERIAL		CONFIDENTIAL AND PROPRIETARY INFORMATION THIS DOCUMENT CONTAINS CONFIDENTIAL AND PROPRIETARY INFORMATION OF MTE CORPORATION AND MAY NOT BE USED, COPIED OR DISCLOSED TO OTHERS EXCEPT WITH THE AUTHORIZED WRITTEN PERMISSION OF MTE CORPORATION	
CONTAINS <0.1% OF ANY SVHC BY WEIGHT PER REACH REGULATION				DESCRIPTION	
UNLESS OTHERWISE SPECIFIED DIMENSIONS ARE IN INCHES [MM] TOLERANCES ARE: ANGLES: $\pm 1^\circ$ 1 PLACE .X: $\pm .1 [2.5]$ 2 PLACE .XX: $\pm .03 [0.76]$ 3 PLACE .XXX: $\pm .010 [0.254]$		DRAWN KV CHECKED MK APPROVED JG		DATE 08/21/18 DATE 10/09/18 DATE 10/10/18	
		N83 W13330 Leon Road Menomonee Falls, WI 53051 USA 800.455-4683 262.253.8200		SIZE D DWG No. CD MAPP0103A REV 00	
		SCALE 1:2		SHEET 1 OF 1	

A

A