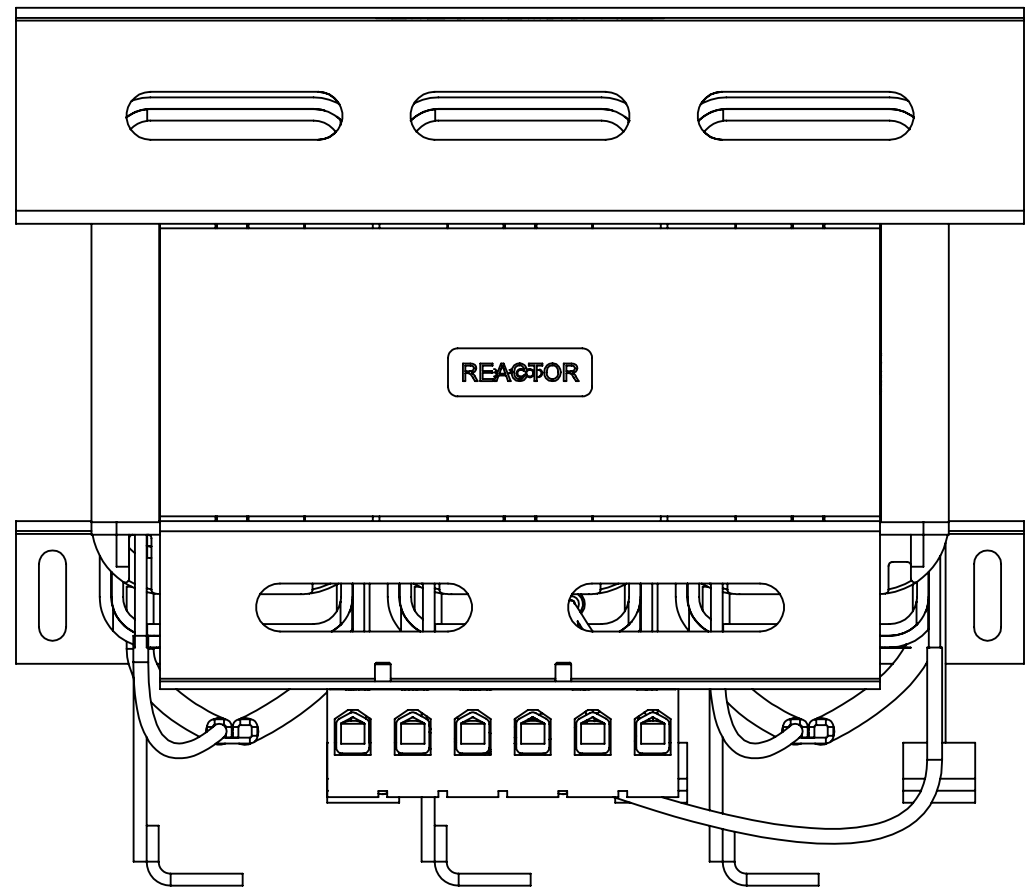
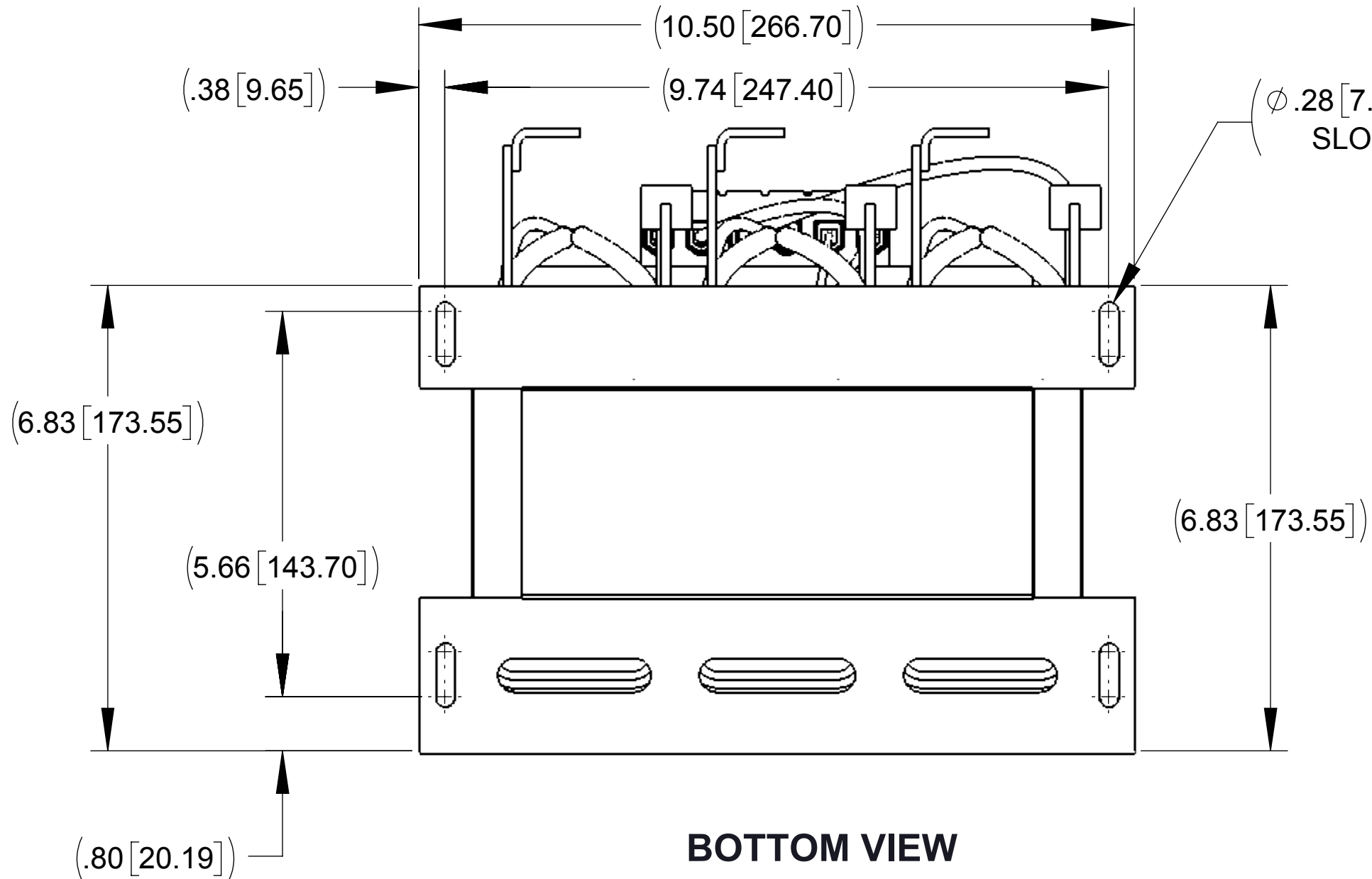


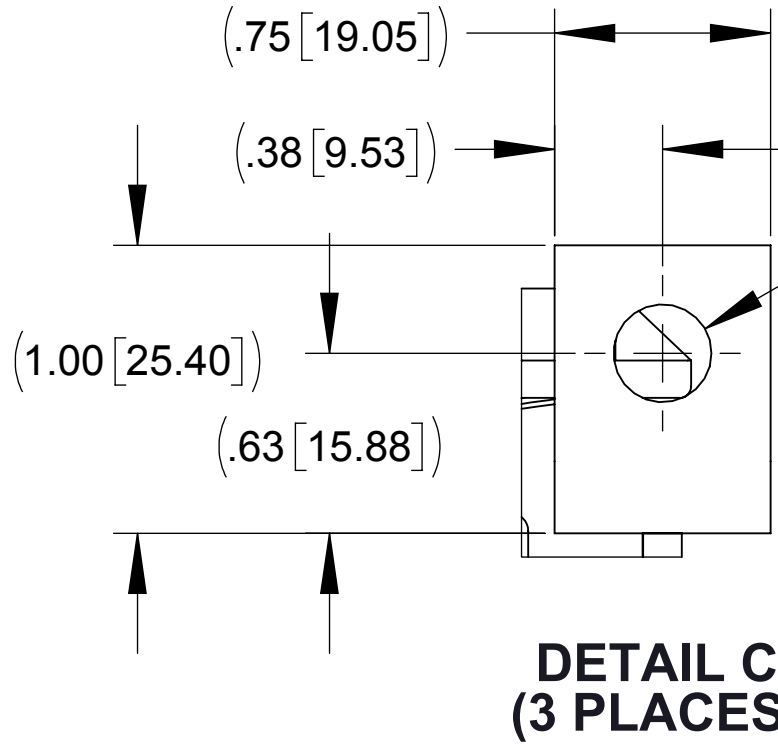
APPROX. WEIGHT
(LBS)
77



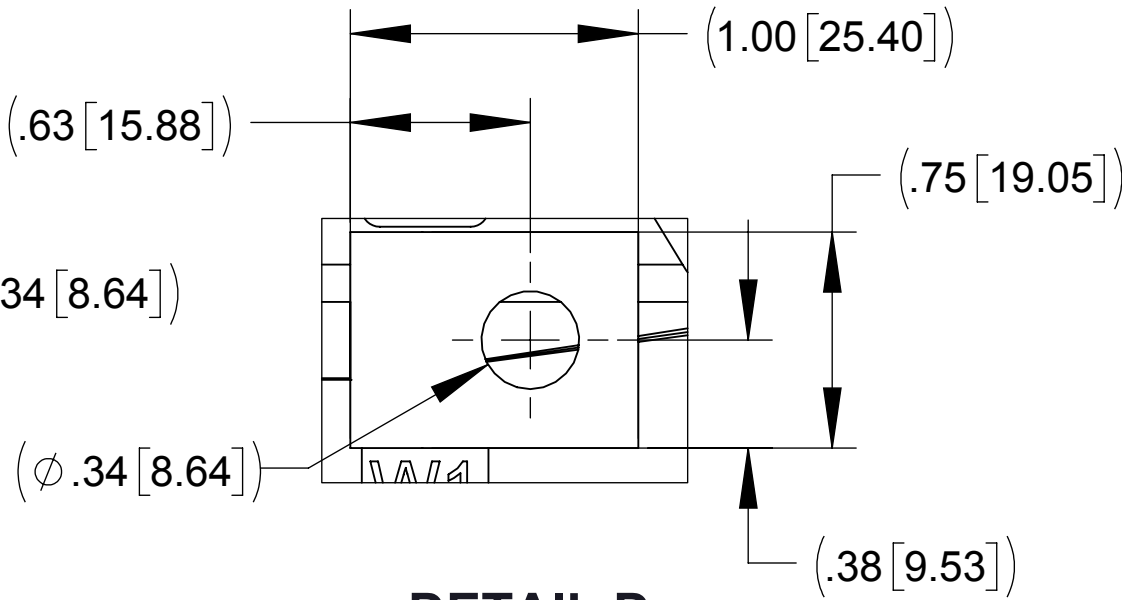
TOP VIEW



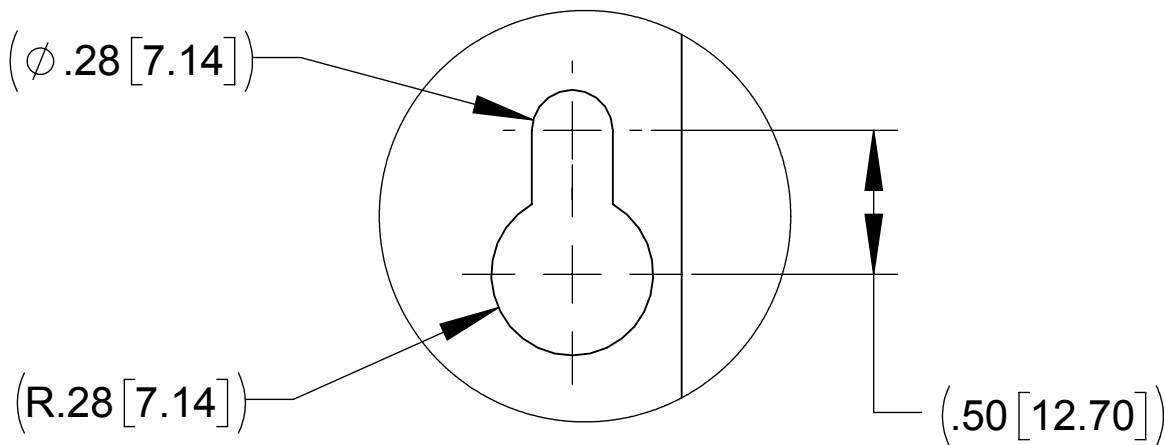
BOTTOM VIEW



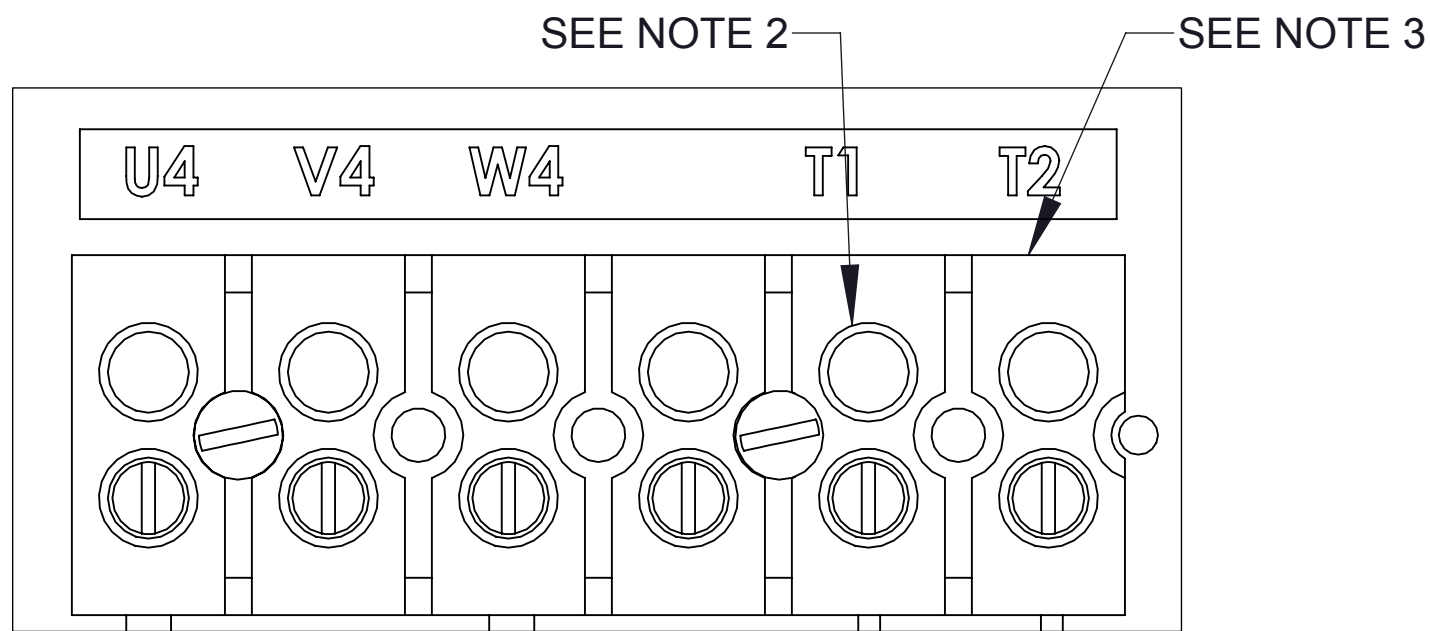
DETAIL C
(3 PLACES)



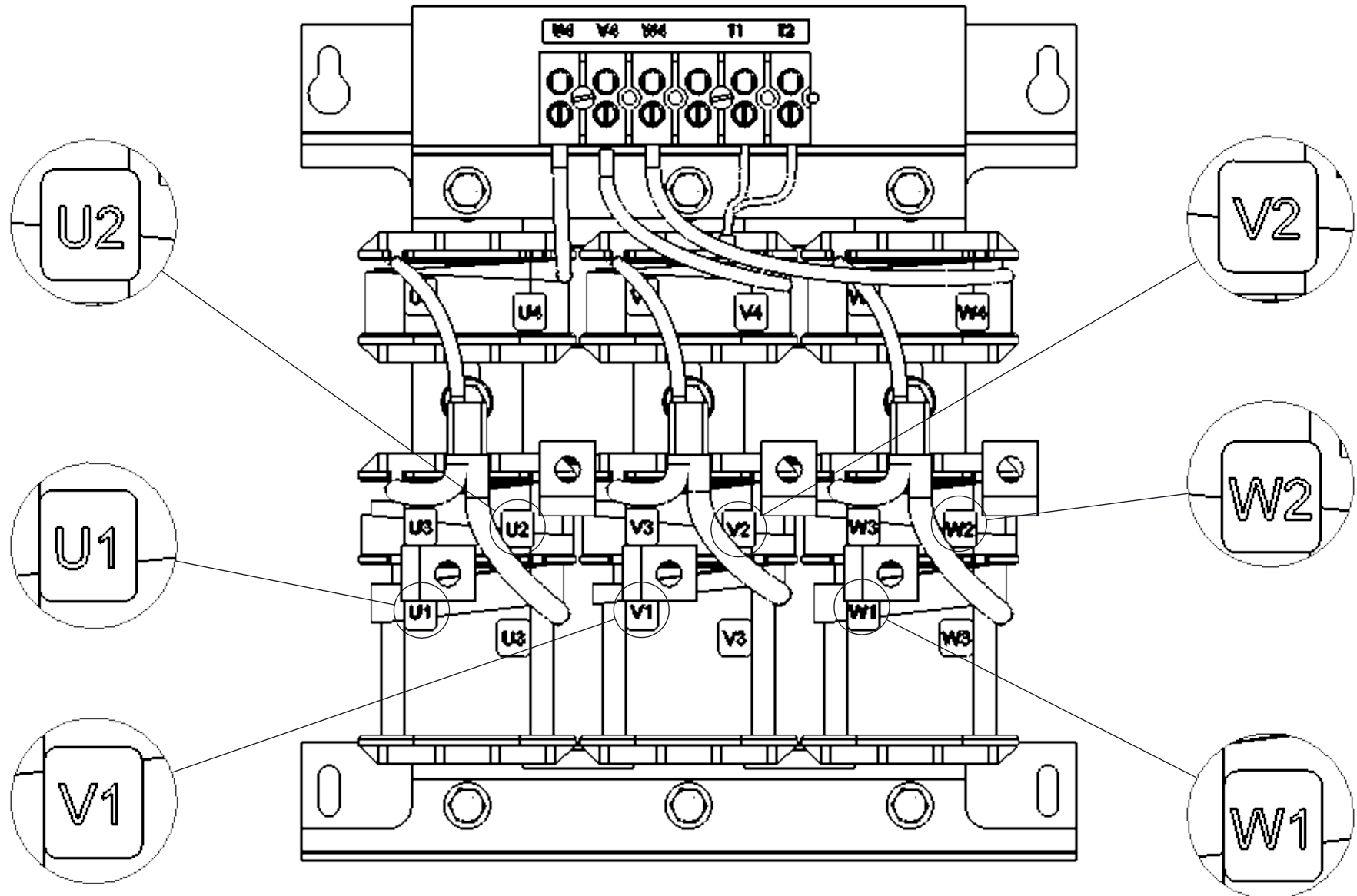
DETAIL D
(3 PLACES)



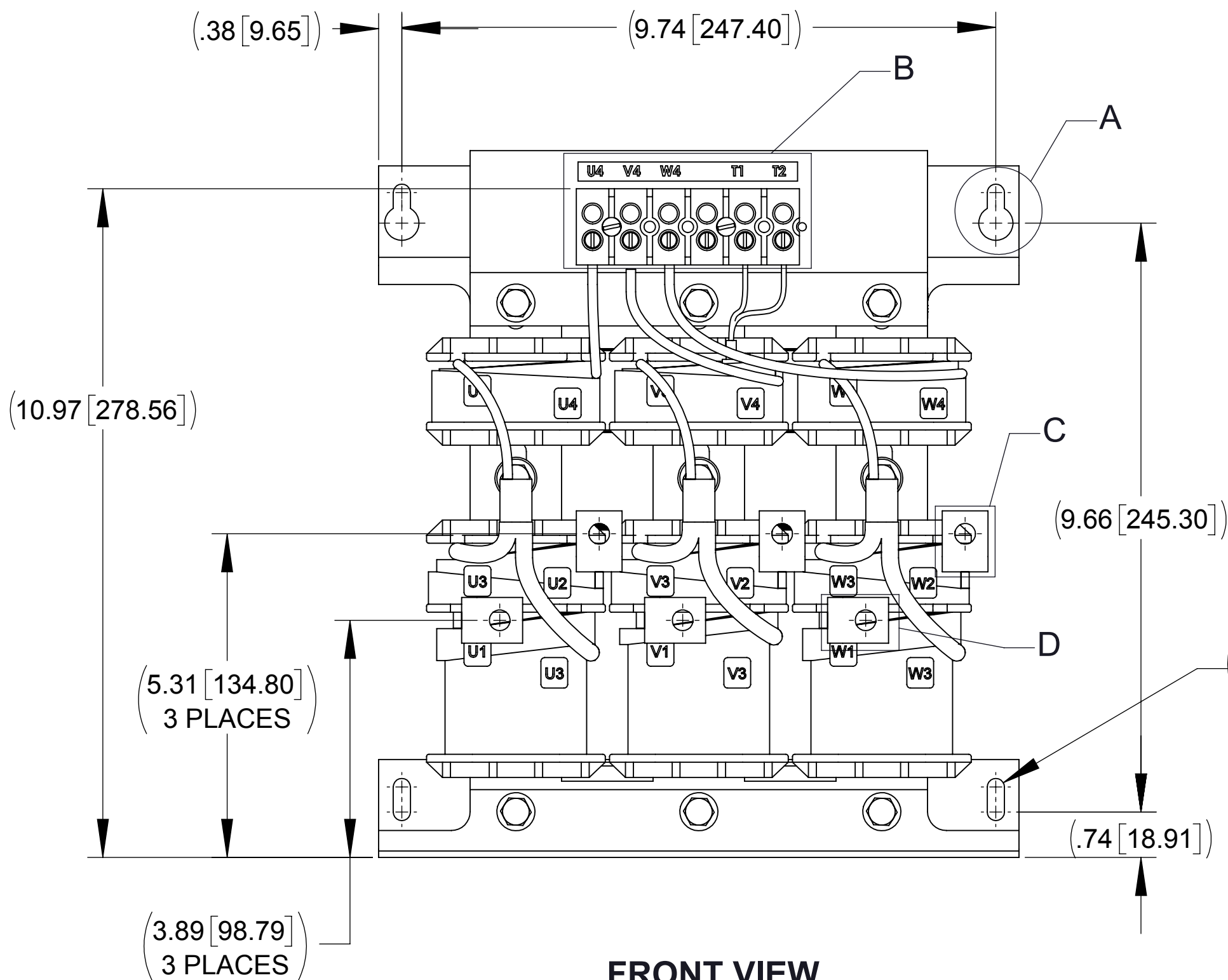
DETAIL A
(2 PLACES)



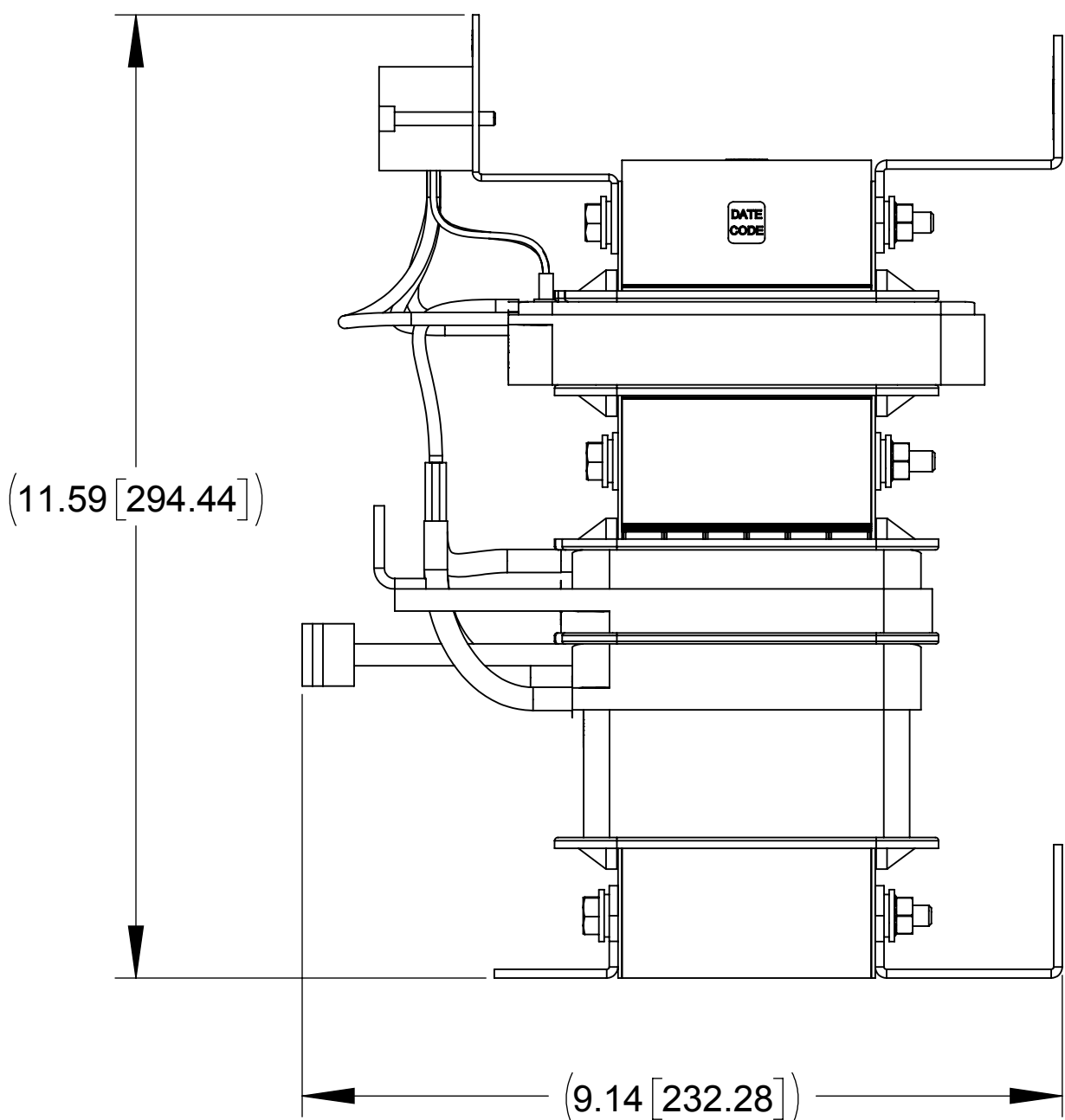
DETAIL B
CUSTOMER CONNECTION
DETAIL VIEW



CUSTOMER CONNECTION
DETAIL VIEW



FRONT VIEW



SIDE VIEW

NOTES:

1. FILTER REQUIRES CAP-377TP (QTY. 1).
2. TERMINAL SCREW TIGHTENING TORQUE: 16 IN/LBS
3. WIRE RANGE: 4-14 AWG.

THE COMPONENT, PART OR ASSEMBLY DESCRIBED IN THIS DOCUMENT MUST COMPLY WITH THE EU (EUROPEAN UNION) DIRECTIVE RoHS2		MATERIAL		CONFIDENTIAL AND PROPRIETARY INFORMATION THIS DOCUMENT CONTAINS CONFIDENTIAL AND PROPRIETARY INFORMATION OF MTE CORPORATION AND MAY NOT BE USED, COPIED OR DISCLOSED TO OTHERS EXCEPT WITH THE AUTHORIZED WRITTEN PERMISSION OF MTE CORPORATION	
CONTAINS <0.1% OF ANY SVHC BY WEIGHT PER REACH REGULATION				DESCRIPTION	
UNLESS OTHERWISE SPECIFIED DIMENSIONS ARE IN INCHES [MM] TOLERANCES ARE: ANGLES: ± 1 ° 1 PLACE .X: ± .1 [2.5] 2 PLACE .XX: ± .03 [0.76] 3 PLACE .XXX: ± .010 [0.254]		MTE POWER QUALITY. SOLVED. N83 W13330 Leon Road Menomonee Falls, WI 53051 USA 800.455-4683 262.253-8200		MATRIX AP 83A 240V 60Hz OPEN PANEL	
		DRAWN KV	DATE 04/20/18	SIZE D	DWG No. CD MAPP0083A
		CHECKED KV	DATE 07/30/18	REV 00	
		APPROVED AK	DATE 10/08/18	SCALE 1:2	SHEET 1 OF 1