

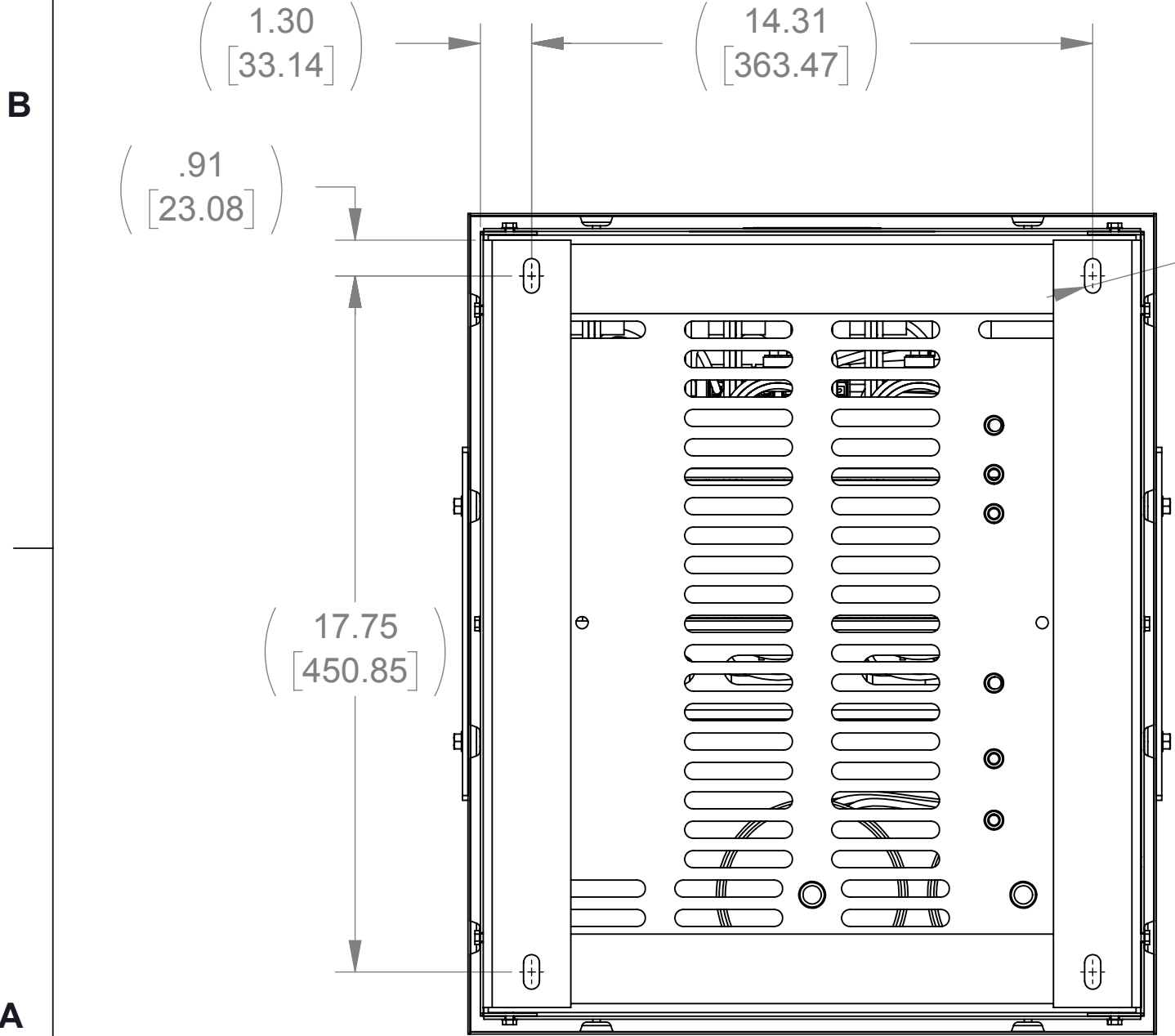
APPROX. WEIGHT
(LBS)
207

D

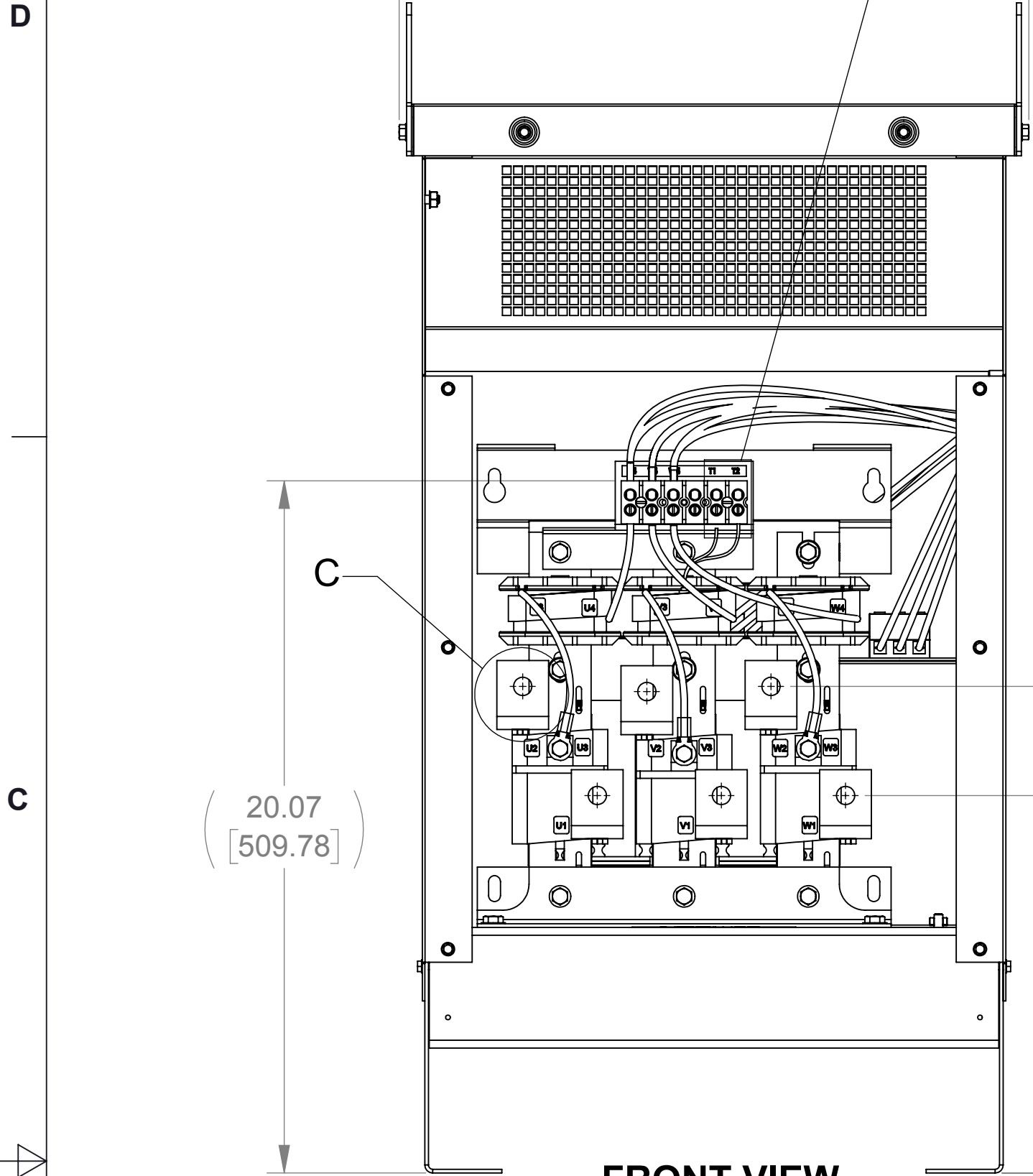
C

B

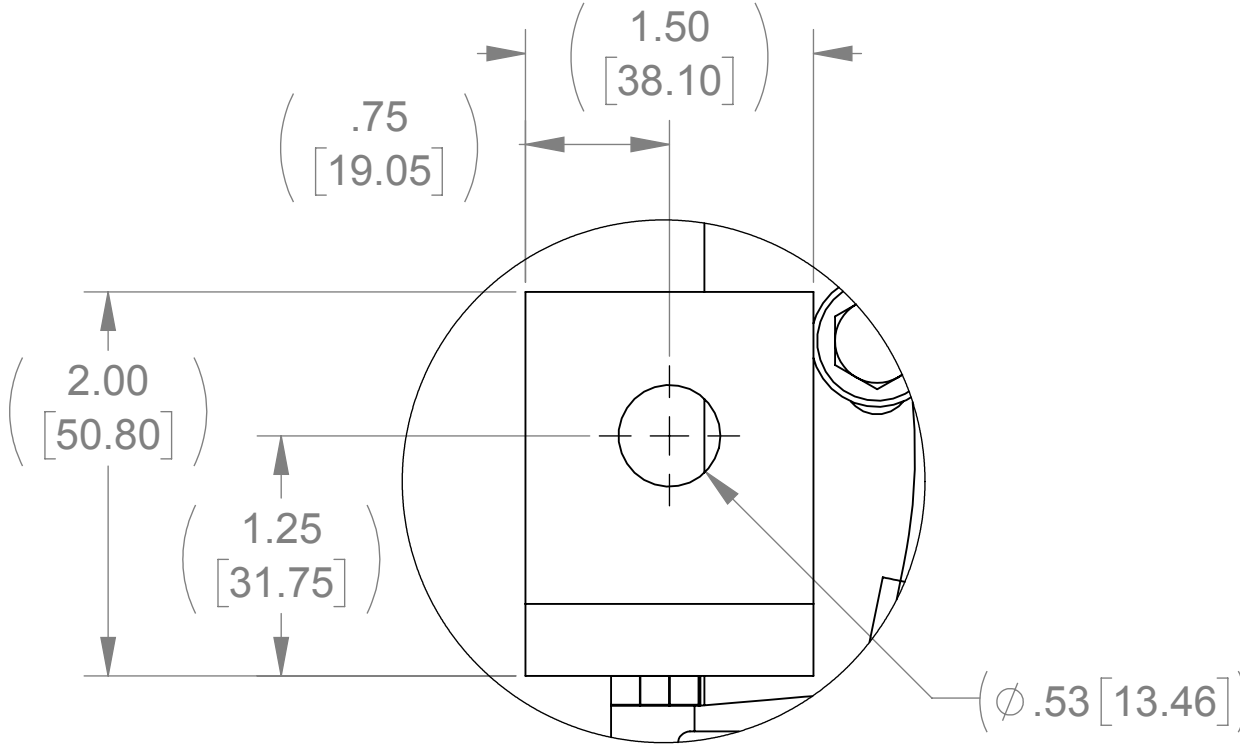
A



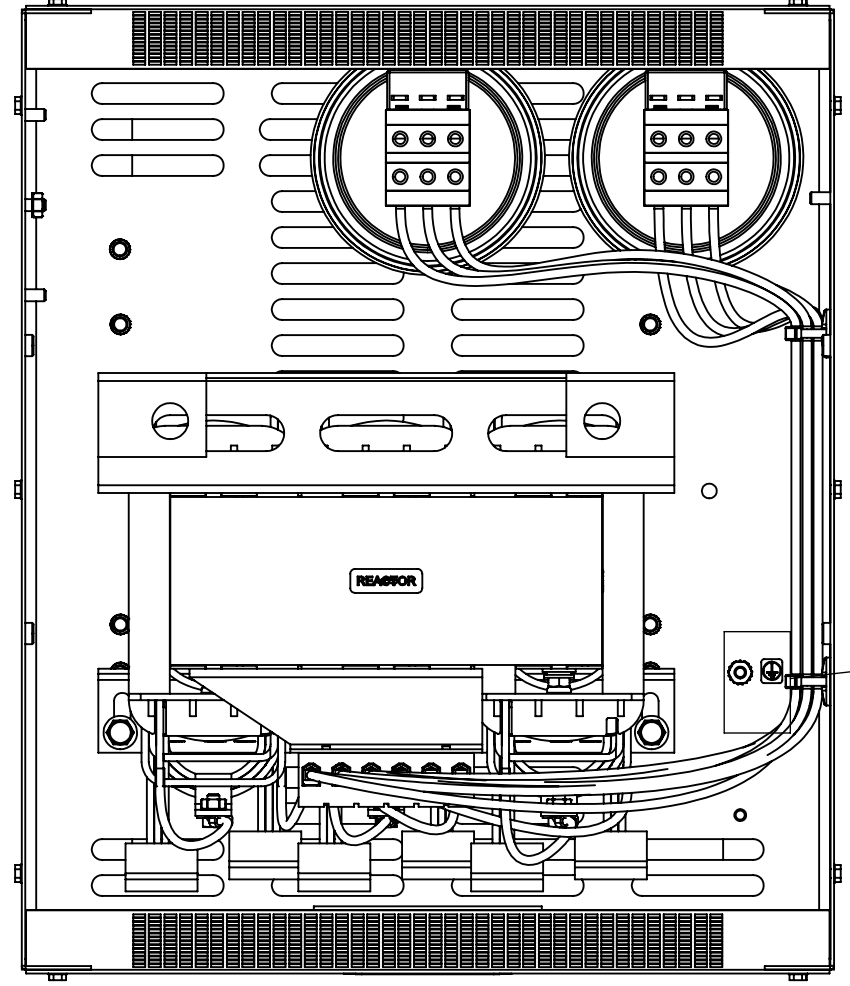
BOTTOM VIEW



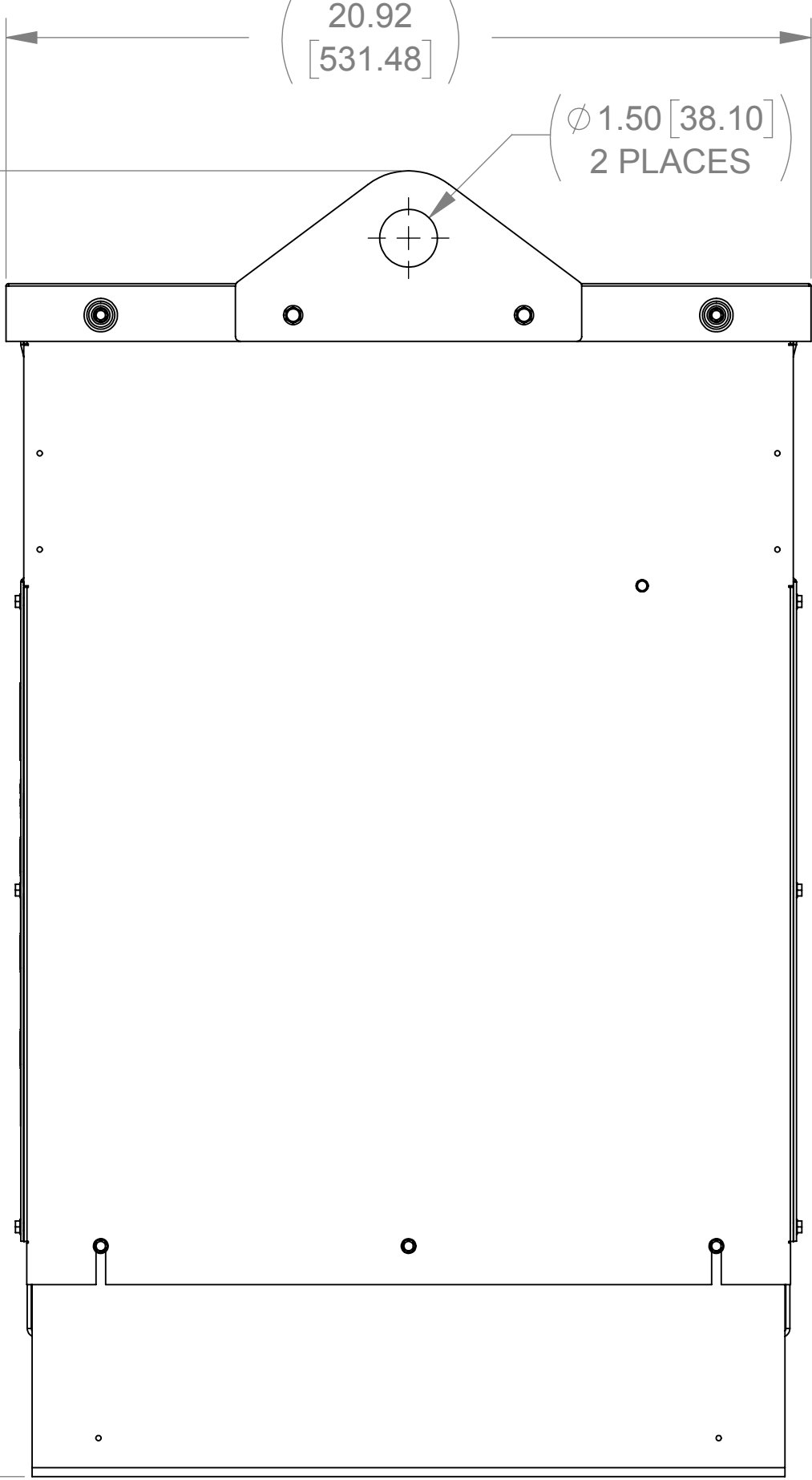
FRONT VIEW
(PANEL REMOVED)



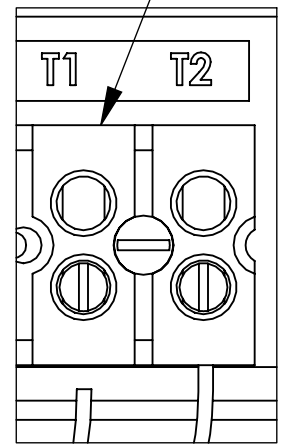
DETAIL C
(6 PLACES)



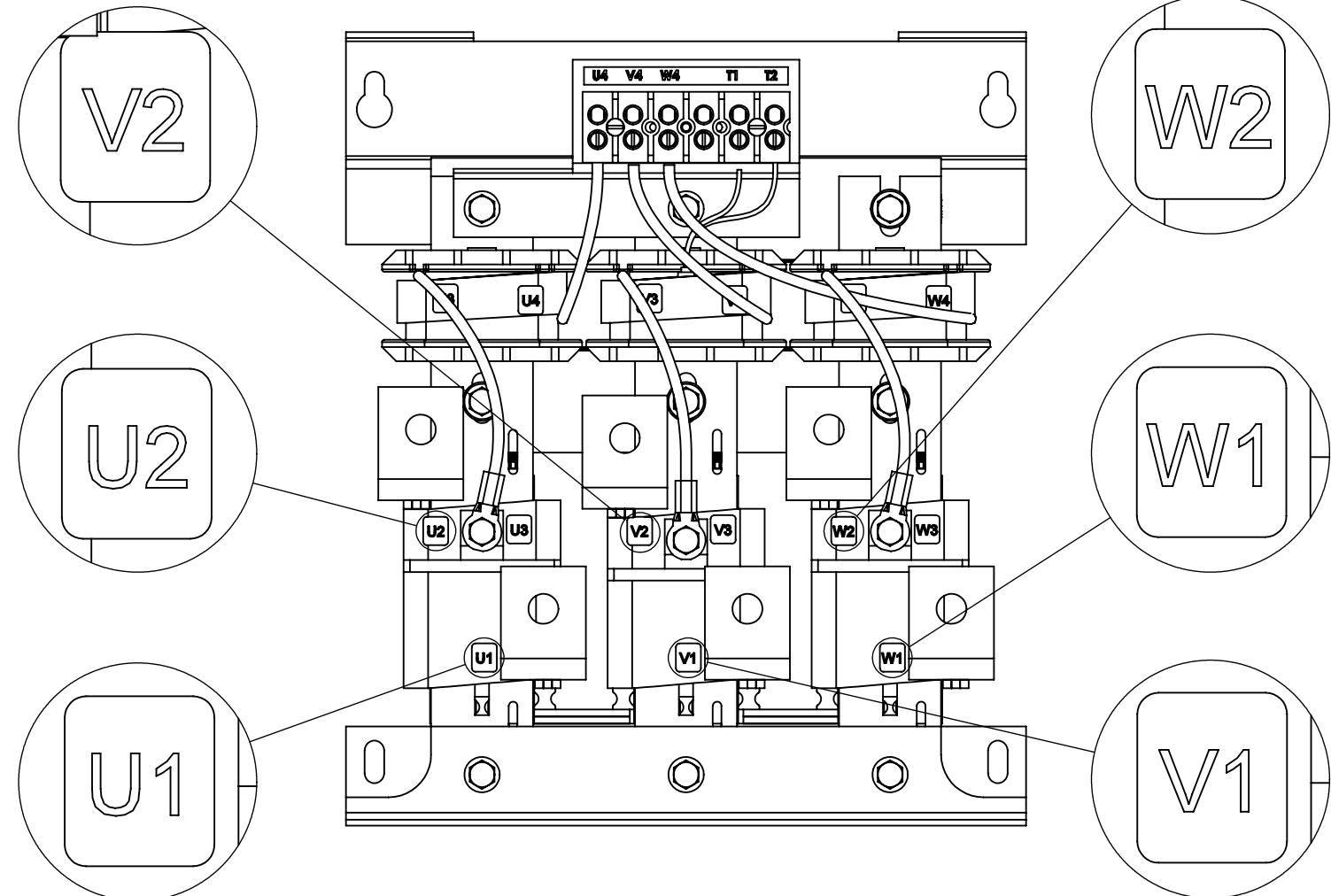
TOP VIEW
(PANELS REMOVED)



SIDE VIEW
(PANELS REMOVED)

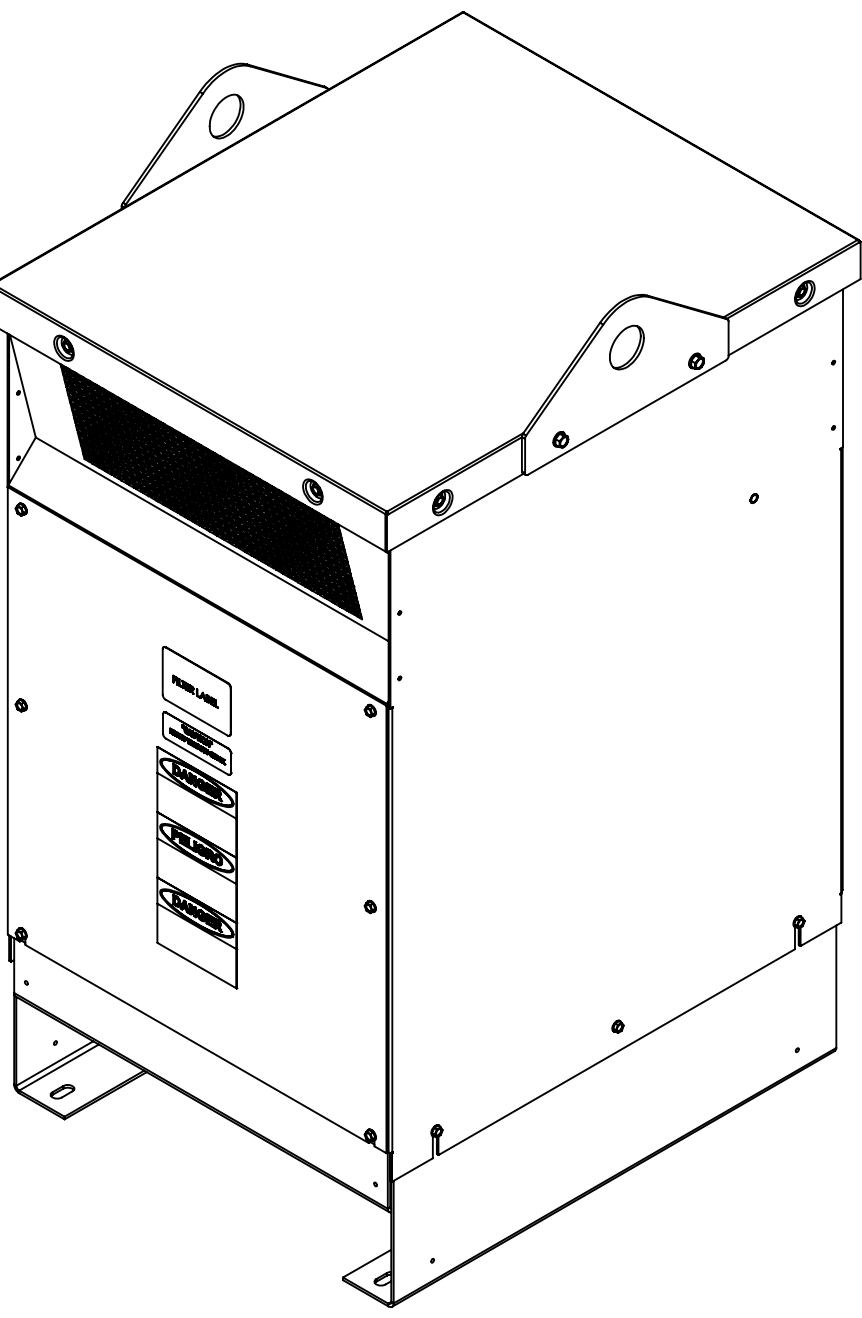


DETAIL A
CUSTOMER CONNECTION
(THERMAL)



CUSTOMER CONNECTION
DETAIL VIEW

| ECO No | DESCRIPTION | REV BY | DATE |
|--------|-------------|--------|------|
| | | | |



NOTES:

1. TERMINAL SCREW TIGHTENING TORQUE: 16 IN/LBS, MAX.
2. WIRE RANGE: 4-14 AWG.

| THE COMPONENT, PART OR ASSEMBLY DESCRIBED IN THIS DOCUMENT MUST COMPLY WITH THE EU(EUROPEAN UNION) DIRECTIVE RoHS2 | | MATERIAL | | CONFIDENTIAL AND PROPRIETARY INFORMATION THIS DOCUMENT CONTAINS CONFIDENTIAL AND PROPRIETARY INFORMATION OF MTE CORPORATION AND MAY NOT BE USED, COPIED OR DISCLOSED TO OTHERS EXCEPT WITH THE AUTHORIZED WRITTEN PERMISSION OF MTE CORPORATION | |
|--|--|---|------------------|--|-------------------------|
| CONTAINS <0.1% OF ANY SVHC BY WEIGHT PER REACH REGULATION | | | | DESCRIPTION | |
| UNLESS OTHERWISE SPECIFIED DIMENSIONS ARE IN INCHES [MM] TOLERANCES ARE: ANGLES: ± 1 ° 1 PLACE .X: ± .1 [2.5] 2 PLACE .XX: ± .03 [0.76] 3 PLACE .XXX: ± .010 [0.254] | | MTE POWER QUALITY. SOLVED. N83 W13330 Leon Road Menomonee Falls, WI 53051 USA 800.455-4683 262.253-8200 | | MATRIX AP 128A 240V 60Hz FILTER, NEMA 1/2 ENCL | |
| | | DRAWN KV | DATE 08/16/18 | SIZE D | DWG No. CD MAPG0128A |
| | | CHECKED KV | DATE 10/09/18 | SCALE 1:4 | REV 00 |
| | | APPROVED JG | DATE 10/10/18 | SHEET 1 OF 1 | |