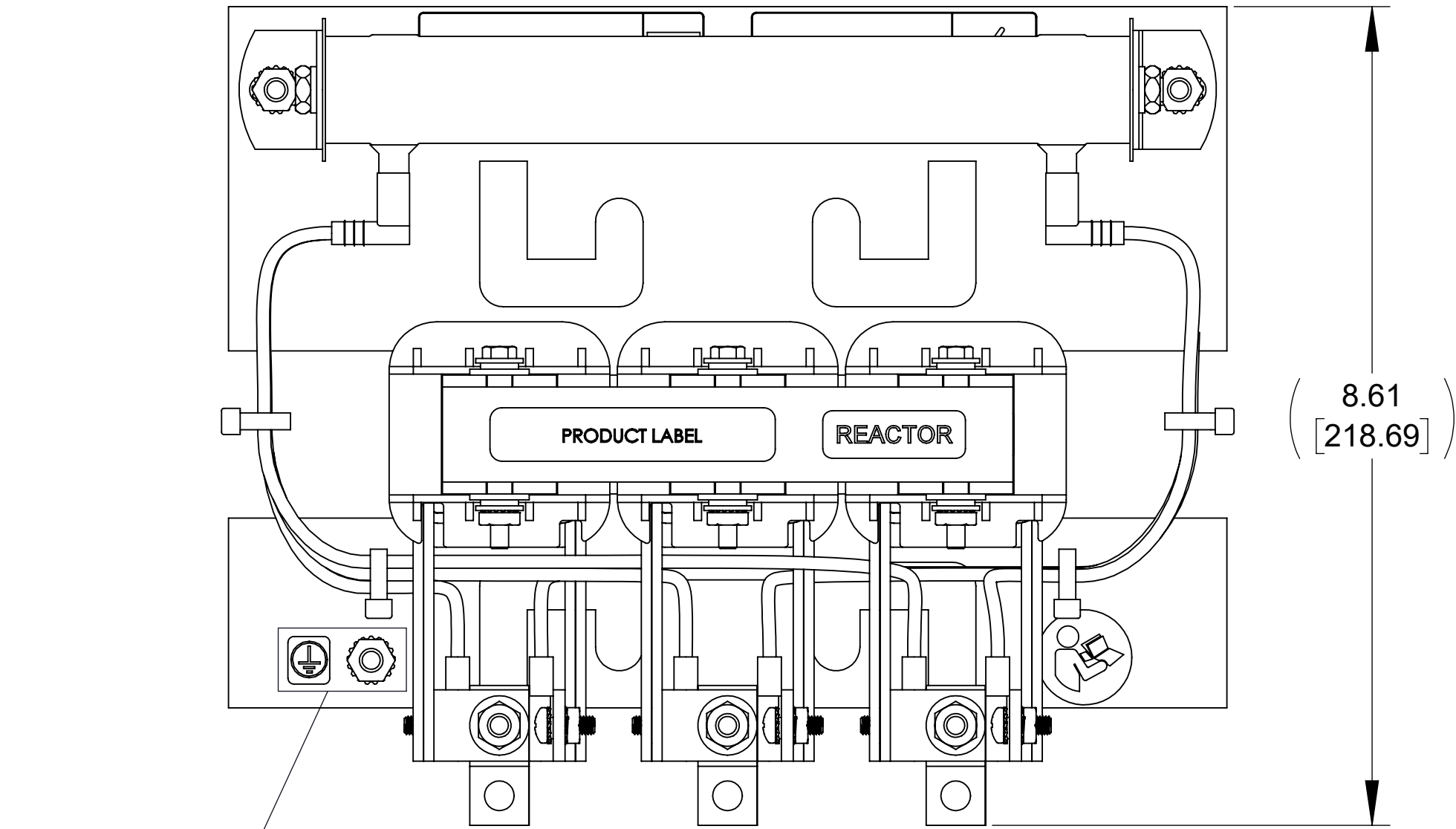
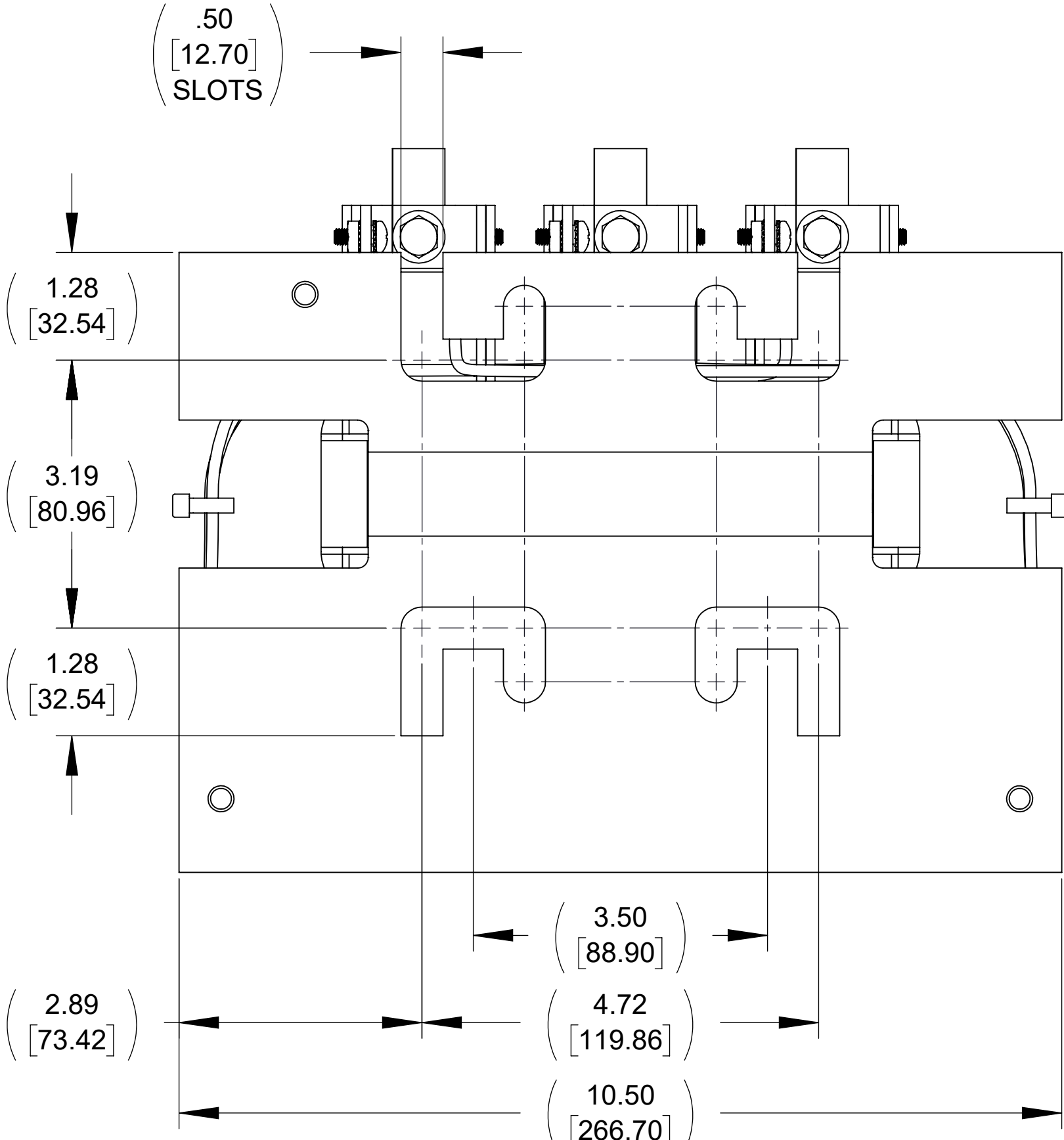


APPROX. WEIGHT
(LBS)
15

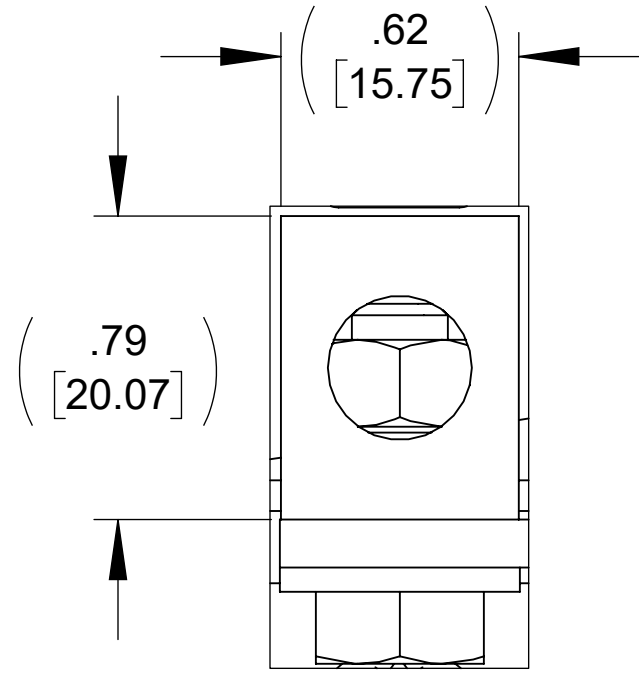
ECO No	DESCRIPTION	REV BY	DATE
M14098	ALL LEADS CHANGED TO BLACK	JD	11/15/21



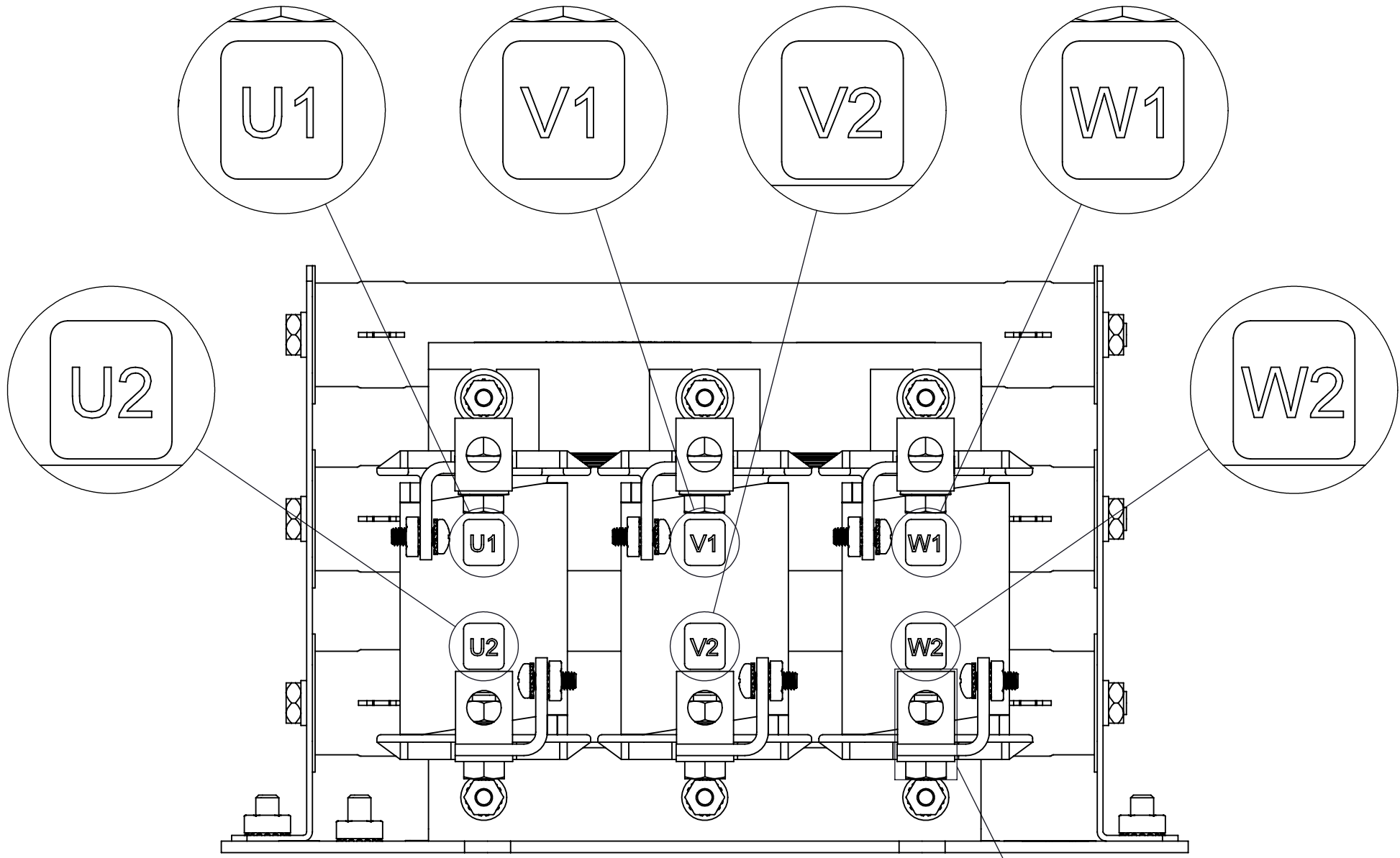
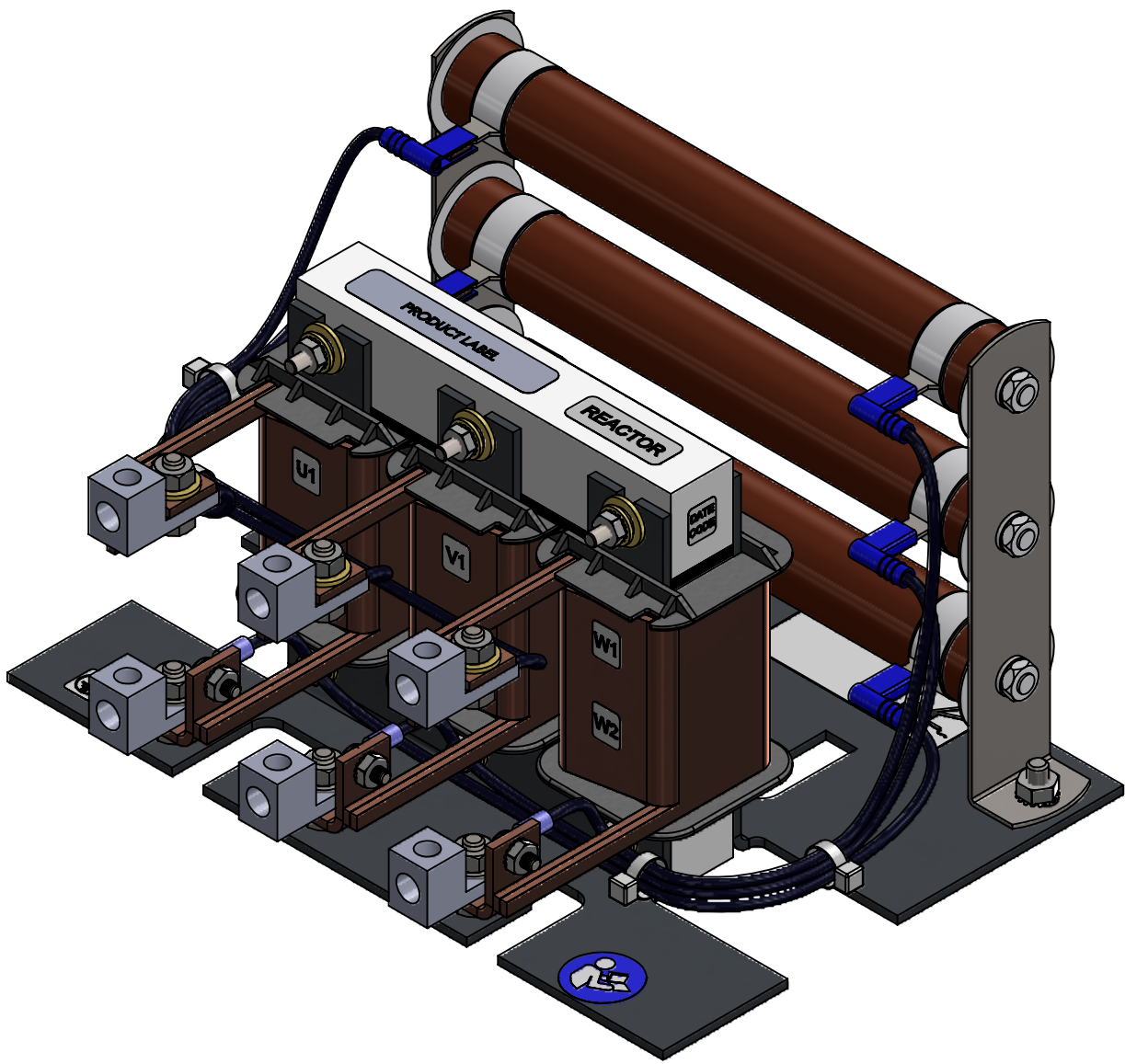
TOP VIEW



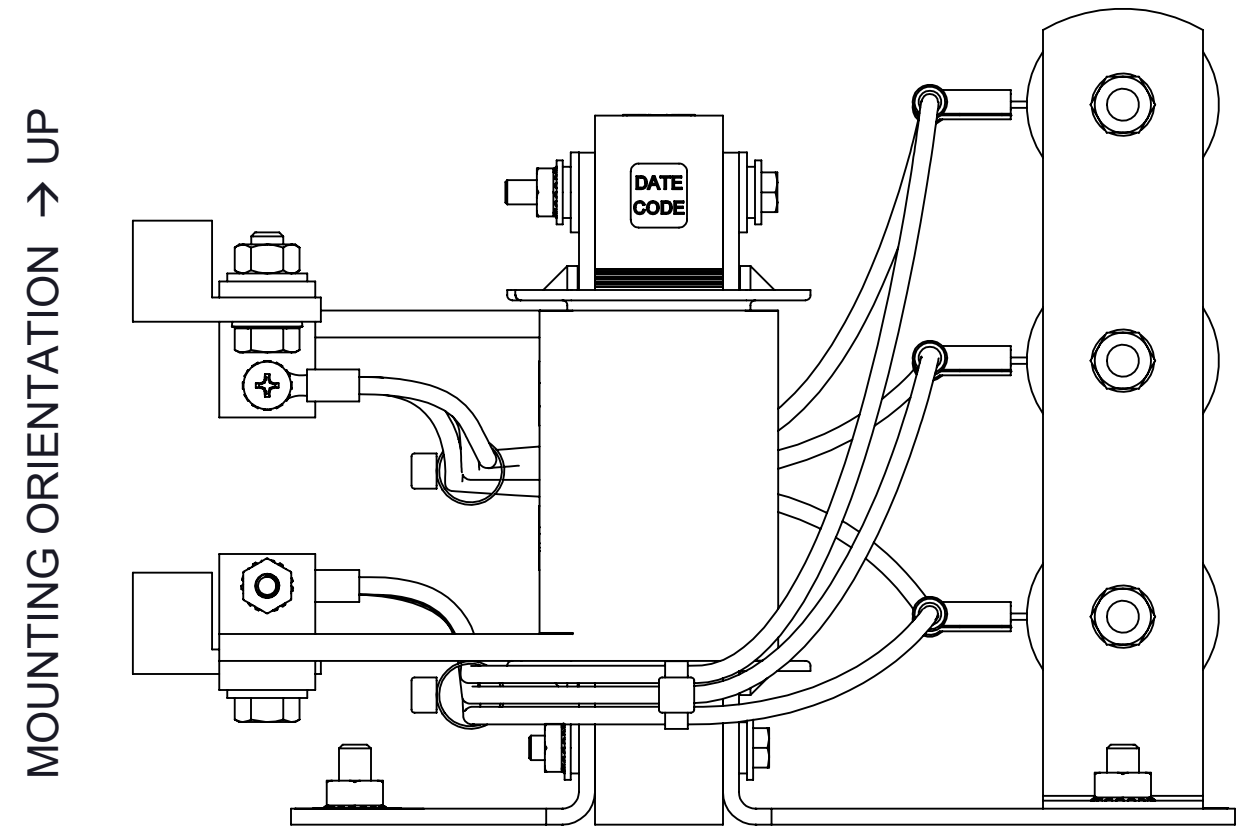
BOTTOM VIEW



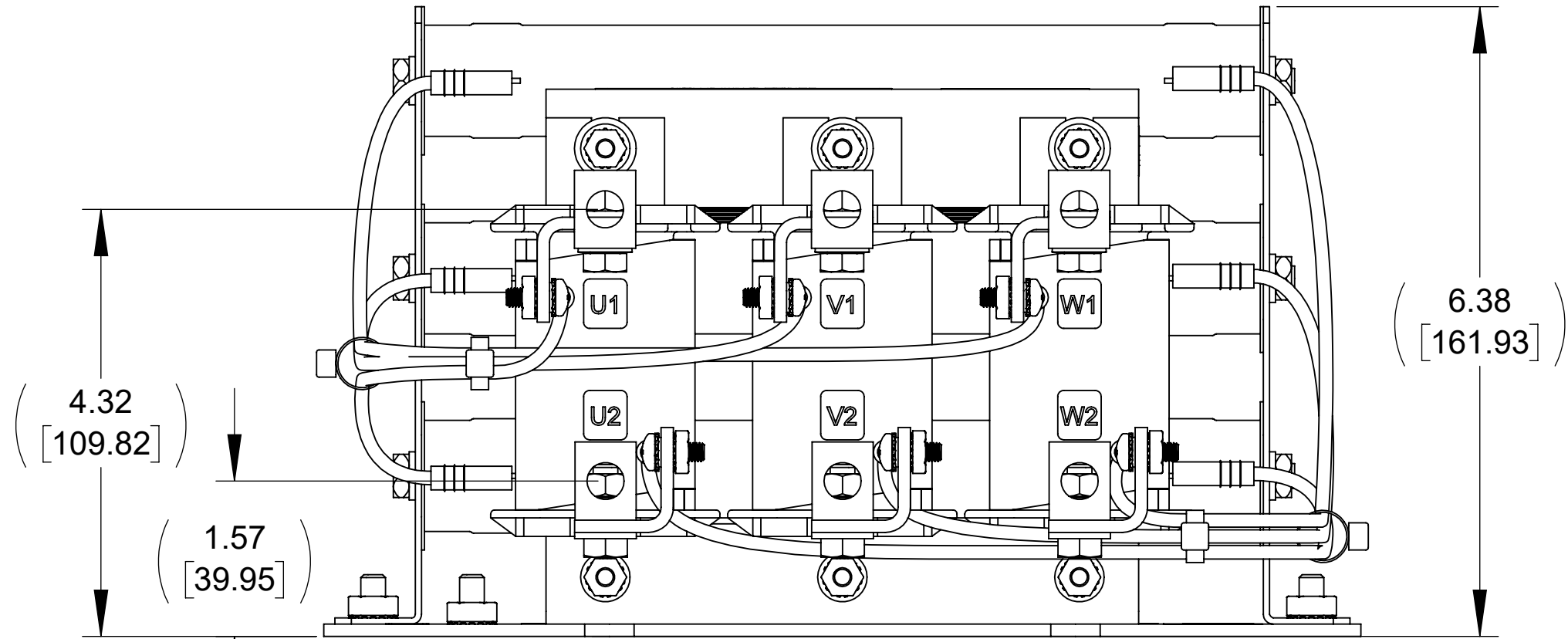
DETAIL A
CUSTOMER CONNECTION
LUG DETAIL
SEE NOTES 1&2
(6 PLACES)



CUSTOMER CONNECTION
DETAIL VIEW
(LEADWIRES REMOVED)



SIDE VIEW



FRONT VIEW

NOTES:

1. TERMINAL WIRE RANGE: 14-1/0 AWG.
2. TERMINAL SCREW TIGHTENING TORQUE: 45 IN/LBS.
3. REFER TO USER MANUAL FOR COMPLETE INSTALLATION INSTRUCTIONS.

THE COMPONENT, PART OR ASSEMBLY DESCRIBED IN THIS DOCUMENT MUST COMPLY WITH THE EU(EUROPEAN UNION) DIRECTIVE RoHS2		DRAWN BY: JD	DATE 07/08/21	CONFIDENTIAL AND PROPRIETARY INFORMATION THIS DOCUMENT CONTAINS CONFIDENTIAL AND PROPRIETARY INFORMATION OF MTE CORPORATION AND MAY NOT BE USED, COPIED OR DISCLOSED TO OTHERS EXCEPT WITH THE AUTHORIZED WRITTEN PERMISSION OF MTE CORPORATION	
CONTAINS <0.1% OF ANY SVHC BY WEIGHT PER REACH REGULATION		CHECKED BY: JD	DATE 11/15/21		
UNLESS OTHERWISE SPECIFIED DIMENSIONS ARE IN INCHES [MM] TOLERANCES ARE: ANGLES: ± 1 ° 1 PLACE .X: ± .1 [2.5] 2 PLACE .XX: ± .03 [0.76] 3 PLACE .XXX: ± .010 [0.254]		ME APPROVED BY: DP	DATE 11/15/21	DESCRIPTION DVDT E SERIES 130A 208-600V 2-4kHz FILTER, OPEN PANEL	
		RE APPROVED BY: PY	DATE 11/16/21		
				SIZE D	DWG No. CD DVTP0130E
				SCALE 2:3	REV 01
				Sheet1	
				SHEET 1 OF 1	



N83 W13330 Leon Road
Menomonie Falls, WI 53051 USA
800.455.4683
262.253.8200