

FILE: J:\CUSTDWG\DC\CA015002

INDUCTANCE

0.22 mH

LOSSES

36 Watts

WEIGHT

23 Lbs

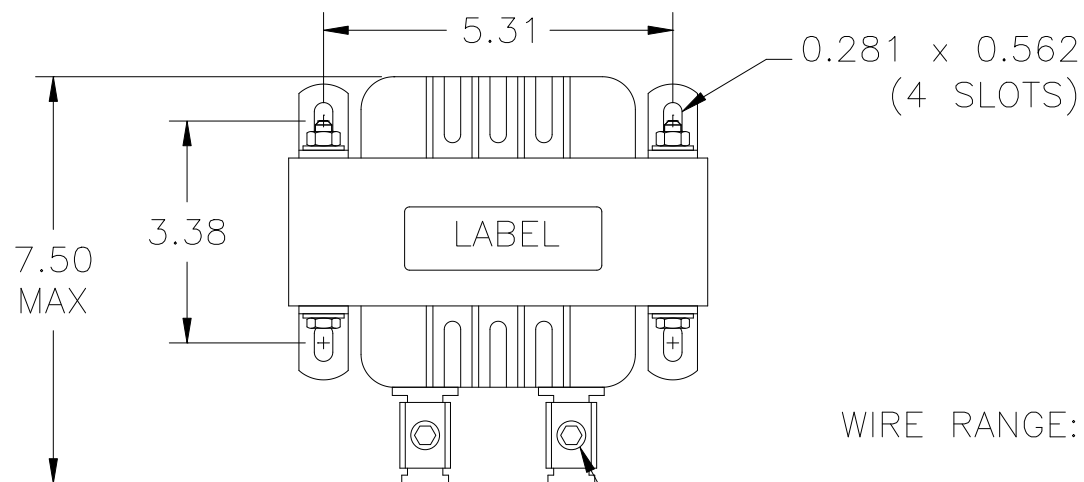
NO.

CHANGE DESCRIPTION

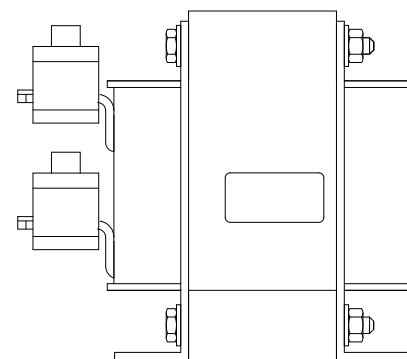
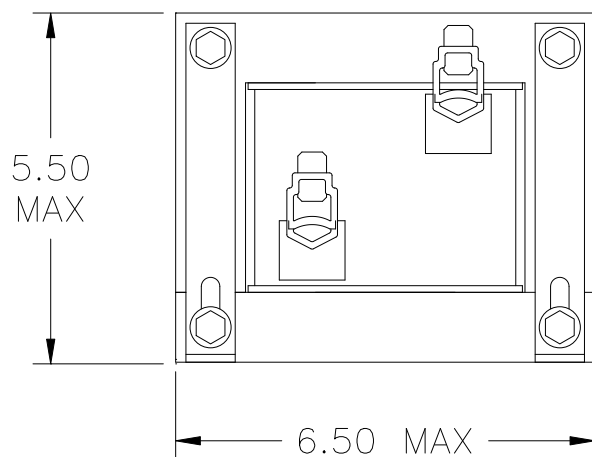
BY

DATE

C'K'D



CAUTION—TERMINAL SCREW TIGHTENING
TORQUE: 150 in-lb MAX.



UNLESS OTHERWISE SPECIFIED, DIMENSIONS ARE IN INCHES [mm]
AND TOLERANCES ARE:

DECI.

FRAC.

ANGLES

DRILLED HOLES

PART NAME:

DC CHOKE

DESCRIPTION:

OUTLINE DIMENSION

FINISH:

MTE CORPORATION
MENOMONEE FALLS, WISCONSIN

DCA015002

REV.
00

SCALE NTS

DATE 06/28/05

C'K'D

REF.

DR. BY AGK

APP'D